

MONTHLY STAKEHOLDER COMMUNICATION

January 2024

Wollondilly Performing Arts Centre
Wollondilly Shire Council



Belmadar



Upcoming Works

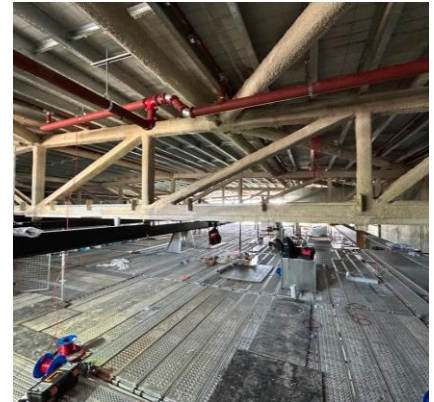
- **Excavation Works** – Continue Excavation of Site Refuse Area
- **Concrete:**
 - Form, Reinforce and Pour Site Refuse Slab
- **Masonry**
 - Commence Blockwork on top of concrete upstand wall
 - Commence Masonry to Fire Booster
- **Structural Steel:**
 - Complete Foyer Structural Steel Install
 - Complete Acoustic Sliding Door Steel Install
- **Fire Spray** – Complete Fire Spray to remaining Structural Steel
- **Mechanical Services:**
 - Complete Level 1 – Refrigerant/Plumbing, Duct Install and Electrical Cabling.
 - Level 2 – Continue Duct Install
 - Theatre Space – Continue Duct Install
- **Electrical Services:**
 - Commence external in-grounds work
 - Continue Electrical, Security, AV and Comms Rough-In
 - Commence Theatre Rough-in
 - Commence Level 1 Electrical Work
- **Hydraulic Works:**
 - Continue Hydraulic Rough-in
 - Continue Syfon Drainage Install
 - Continue Bubbler Pit / Civil Pit Works to Northern Elevation
 - Commence Service Extension in Carpark
- **Fire Services**
 - Continue Dry Fire Services to Level 1 and Level 2
 - Commence Wet Fire to Level 2
 - Continue Theatre Space Sprinkler & Dry Fire Works
- **Kitchen**
 - Install Exhaust Hood
 - Install Cool Room Panels
- **Roofing** – Complete High and Low-level Roof Works
- **Gyprock**
 - Continue Sheeting and Framing Walls and Ceilings
 - Continue External Cladding

Completed Works

- **Excavation Works** – Site Refuse Retaining Wall
- **Concrete:**
 - Pour Level 2 Foyer
 - Reinforce and Pour Site Refuse Retaining Wall Footing
 - Form, Reinforce and Pour Fire Booster Slab on Ground
- **Masonry** – Commence Driveway/Site Refuse Block Retaining Wall
- **Render** – Base Coat to Driveway concrete upstand wall
- **Waterproofing** to Northern Upstand Wall
- **Structural Steel:**
 - Foyer Structural Steel Install
- **Fire Spray** - Theatre Trusses and Beams
- **Pre-cast Panels** – Continue Caulking Joints and Welding Plates in Stair #2.
- **Mechanical Services:**
 - Commence Level 1 – Refrigerant/Plumbing, Complete Duct Install and Commence Electrical Cabling.
 - Leve 2 – Continue Duct Install
 - Theatre Space – Commence Duct Install
- **Electrical Services:**
 - Continue High level Electrical
 - Commence Security, AV and Comms Rough-In
- **Hydraulic Works:**
 - Continue Hydraulic and Syfonic Drainage Rough in
 - Commence Civil Pit Works to Northern Elevation
- **Fire Services**
 - Continue Dry Fire Services
 - Continue Level 1 Install
 - Commence Theatre Space Sprinkler Works
- **Roofing** – Continue High and Low-level Roof Works
- **Gyprock**
 - Continue Sheeting and Framing, commence ceiling framing
 - Continue External Cladding Install

Progress Photos

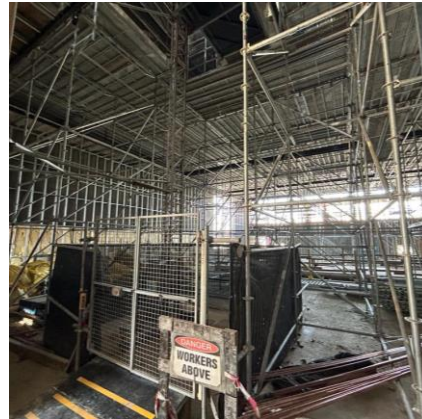
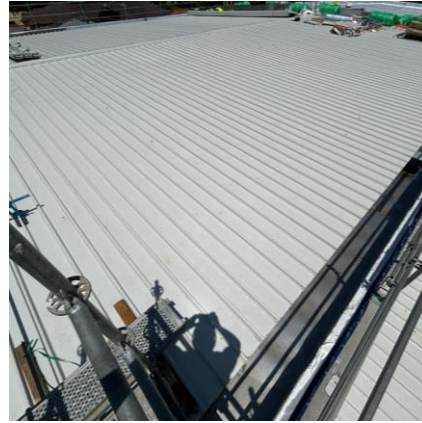
Wollondilly Performing Arts Centre
Wollondilly Shire Council



Commence Blockwork and Façade Cladding, Level 2 Foyer Slab, Foyer Structural Steel and Theatre Steel Fire Spray and Services Rough-in

Progress Photos

Wollondilly Performing Arts Centre
Wollondilly Shire Council



Roof Install, Auditorium Scaffold and Wall Framing, High Level Services
Rough In and Wall Sheeting

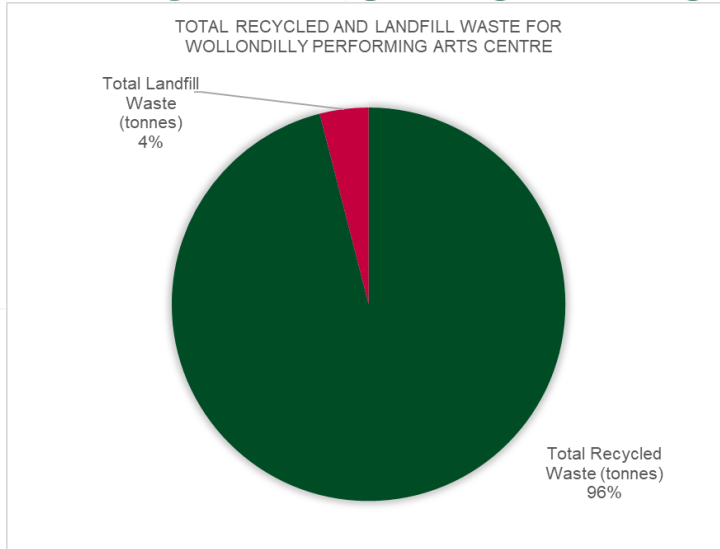
Progress Photos

Wollondilly Performing Arts Centre
Wollondilly Shire Council

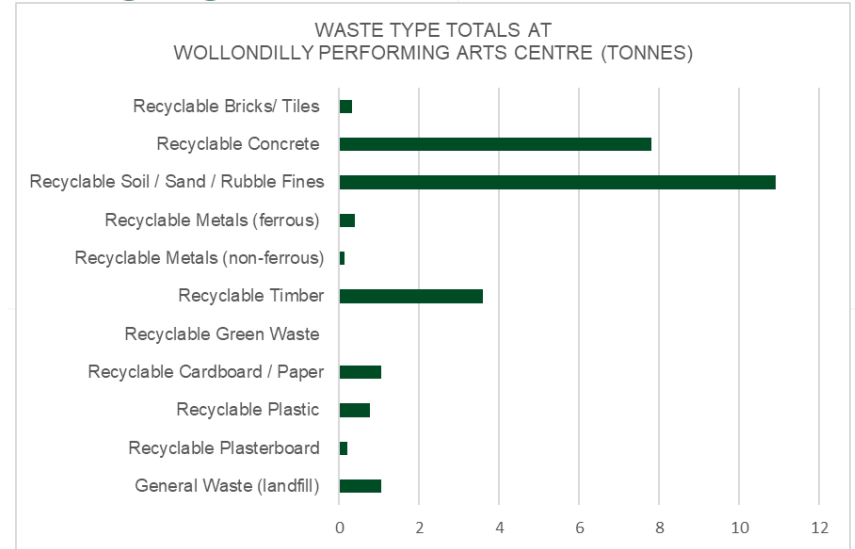


Menangle Street Elevation at Conclusion of January 2024.

Environmental Waste Data



Total recycled (96%) and Landfill Waste (4%), in tonnes, for the month of January 2024 at Wollondilly Performing Arts Centre



Breakdown of the waste type totals (tonnes) for the month of January 2024 at Wollondilly Performing Arts Centre