

MONTHLY STAKEHOLDER COMMUNICATION

March 2024

Wollondilly Performing Arts Centre
Wollondilly Shire Council



Belmadar



MONTHLY STAKEHOLDER COMMUNICATION

Upcoming Works

Wollondilly Performing Arts Centre
Wollondilly Shire Council



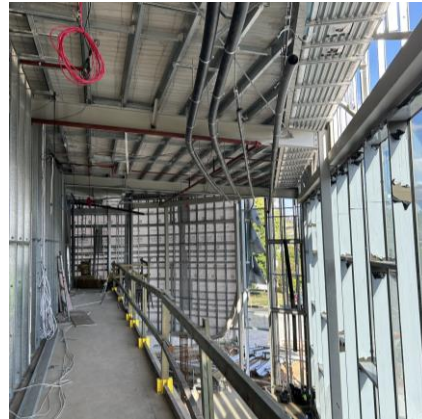
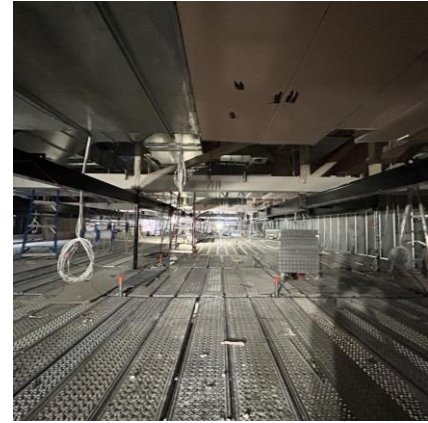
- **Concrete Works** - Bar Plinth and Bar Seat
- **Façade Works** - Continue Raico Window Install, Continue Shingle Cladding Install and Continue with External CFC Sheeting Works.
- **Mechanical Services**
 - Level 1 – Install Grill Boxes to Plasterboard Ceilings.
 - Level 2 – Continue Mechanical Rough-in.
 - Level 3 (Theatre) – Measure / Install droppers to Theatre.
 - Plant Deck – Continue with Copper Pipework.
 - Install Mech Board.
- **Electrical Services**
 - Continue Security Cabling.
 - Continue with Submains.
 - Continue with AV and Comm's Cabling.
 - Complete Majority of High Level Rough-in.
 - Complete Northern In-Ground Works
 - Install Main Board.
- **Level 1 Electrical** - Rough-in Cabling Works ready for Shut-down.
- **Solar** - Install Solar Panel Cabling.
- **Hydraulic Services**
 - Complete Syfon Install to the Foyer (and project).
 - Complete Northern External Civil Works.
 - Fit-Off Bathrooms.
- **Fire Services** - Level 1 – Fit-off sprinklers, Level 2 – Finalise rough-in, Level 3 – Fit-off sprinklers.
- **Roofing** - Complete Roof Capping's, Complete Skylight Install.
- **Gyprock Works**
 - Level 1:Foyer Wall / Ceiling Framing and Sheet BOH Ceilings and Corridor.
 - Level 2:Continue wall sheeting and ceiling sheeting.
 - Level 3: Complete Acoustic Cladding Works to Mech Units, Supply / Install Durra-Panel Ceiling.
- **Acoustic Doors / Louvres.**
 - Supply / Installation Ofinac Door, Supply / Installation Acoustic Louvres.
- **Masonry** - Bin Store Complete Blockwall
- **Render** - Bin Store – Blockwall Render, Fire Booster – Blockwall Render.
- **Waterproofing / Mortar Beds** - Kitchen – Mortar Beds.
- **Vinyl Works** - Floor and Wall Vinyl to the Kitchen, Floor Vinyl to BOH Bathrooms.
- **Tiling** - BOH Accessible Bathroom – Complete Floor / Wall Tiling.
- **TWAS** - TWAS Installation.
- **Joinery** - Install Joinery to Bathrooms.
- **Kitchen** - Expect Kitchen Fit-out to commence back-end of April.
- **Painting** - Commence undercoat works, Painting of CFC Sheets, Painting of TWAS Members.

Completed Works

- **Shed Relocations Works** - Sheds relocated on 9th March to council carpark.
- **Excavation Works to Bin Store Area**
- **Concrete Works**
 - Bin Store Slab on Ground.
 - Foyer Upstand Wall
 - Booster Lid and Planter Footing.
- **Façade Works**
 - Commenced Raico Window Install
 - Commenced Shingle Cladding Install to Colden Street.
 - CFC Sheeting - Continue with CFC Sheeting Works.
- **Mechanical Services**
 - Level 1 – Continue Flexi Diffusers BOH Area.
 - Level 2 – Continue with Refrigerant Works.
 - Level 2 – Foyer – Rough-in high level works.
 - Level 3 (Theatre) – Complete Hard-Ducting (excl. droppers).
 - Plant Deck – Continue with Pipework and Ducting.
- **Lift** - Delivery of Lift and 80% of lift installed.
- **Electrical Services** - Continue Security Cabling, Submains, AV and Comm's Cabling, Complete Majority of High Level Rough-in and Commence In-Ground Works – Northern Section of the Site.
- **Level 1 Electrical** - Complete In-ground Conduit Works & Supply / Install Sub's
- **Solar** - Install Solar Panels and Tilt Frames
- **Hydraulic Services**
 - Continue with Syfon Works to the Foyer, Complete Services Extension Works, Commence External Civil Works and Fit-off Sensor Taps to Male / Female Bathroom.
- **Fire Services** - Continue with Dry Fire and Wet Fire Rough-in.
- **Roofing** - Complete Foyer Roof / Gutters (excl. capping's) and Commence Install Skylights
- **Gyprock Works**
 - Level 1:-
 - Complete all BOH Wall and Ceiling Linings and Commence Foyer Framing.
 - Commence corridor ceiling framing.
 - Level 2
 - Continue with Wall Framing and sheeting.
 - Build rehearsal room bulk-head.
 - Level 3
 - Acoustic Cladding Works to Mech Units and Syfon pipework.
- **Acoustic Doors** - Supply / Installation Ofinac Door Tracks, Ofinac Door – On-site
- **Masonry** - Fire Booster – Planter Wall & Bin Store Blockwall
- **Tiling** - Wet Area Amenities FOH and BOH – Complete Waterproofing, Mortar Beds, Floor/Wall Tiling

Progress Photos

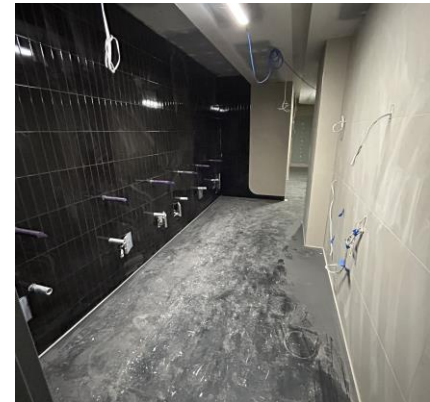
Wollondilly Performing Arts Centre
Wollondilly Shire Council



Solar Panels, Theatre Space, Level 2 and Level 2 Foyer Space

Progress Photos

Wollondilly Performing Arts Centre
Wollondilly Shire Council



Lift install, Commercial Kitchen, CFC Cladding Facade and Tiling
Bathrooms

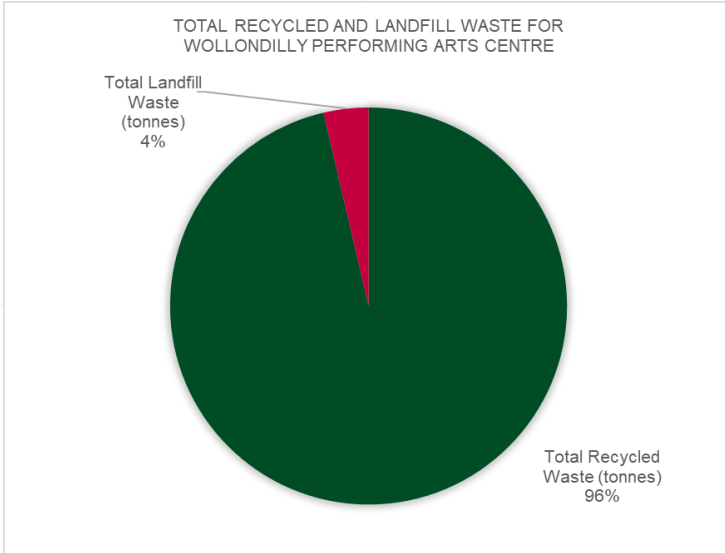
Progress Photos

Wollondilly Performing Arts Centre
Wollondilly Shire Council

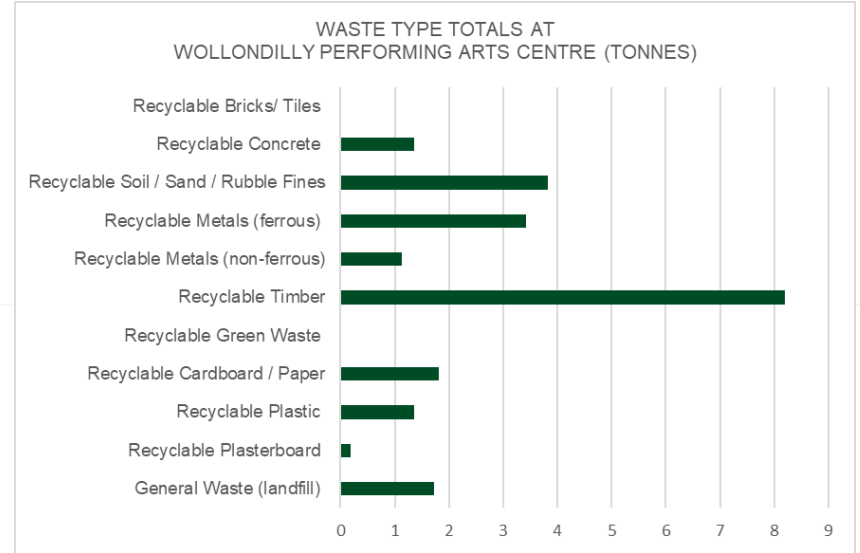


Menangle Street Elevation at Conclusion of March 2024.

Environmental Waste Data



Total recycled (96%) and Landfill Waste (4%), in tonnes, for the month of February 2024 at Wollondilly Performing Arts Centre



Breakdown of the waste type totals (tonnes) for the month of February 2024 at Wollondilly Performing Arts Centre