



Wollondilly  
Shire Council

# ASSET MAPPING & COMMUNITY PROFILES PROJECT

APPIN | CATARACT | DARKES FOREST

2023

---



# Acknowledgement<sup>\*</sup>

Wollondilly Shire Council acknowledges the traditional custodians of the land in Wollondilly, the Dharawal and Gundungurra peoples.

We acknowledge the living culture and spiritual connections to the land for the Dharawal and Gundungurra people and all Aboriginal Nation Groups that may have connections to the area; and that Wollondilly is remarkably placed as the intersection of many tribal lands.

We recognise the traditional Custodians who have occupied and cared for this Country over countless generations and celebrate their continuing contributions to the Shire.

We also acknowledge and remember the Dharawal and Gundungurra peoples who were killed in the Appin Massacre on 17 April 1816.

*\*We acknowledge our continuing collaboration with the Tharawal Local Aboriginal Land Council*

# CONTENTS

# ENTS

<b>Acknowledgement of Country</b>	<b>3</b>
<b>About Wollondilly Shire</b>	<b>7</b>
<b>Population Data</b>	<b>9</b>
<b>Wollondilly Shire Map</b>	<b>10</b>
<b>Emergency Services</b>	<b>13</b>
<b>Council Assets</b>	<b>13</b>
<b>Public Transport</b>	<b>14</b>
<b>Medical Facilities &amp; Pharmacies</b>	<b>14</b>
<b>Neighbourhood Safer Spaces</b>	<b>15</b>
<b>About Appin, Cataract &amp; Darkes Forest</b>	<b>16</b>
<b>Population Data</b>	<b>19</b>
<b>Area Map</b>	<b>21</b>
<b>Areas &amp; Information</b>	<b>22</b>
<b>Disaster Services</b>	<b>24</b>
<b>Schools</b>	<b>24</b>
<b>Childcare Services &amp; Preschools</b>	<b>25</b>
<b>Sports Associations</b>	<b>26</b>
<b>Community Associations</b>	<b>27</b>
<b>Prominent Businesses</b>	<b>28</b>
<b>Private Animal Boarding Facilities</b>	<b>29</b>
<b>Online Facebook Community Forums &amp; Pages</b>	<b>30</b>
<b>Council Assets</b>	<b>31</b>
<b>Neighbourhood Safer Spaces</b>	<b>31</b>

A map of Wollondilly Shire, Australia, showing various towns and villages. The map is overlaid with a green-to-teal gradient. The towns labeled include Wallactia, Warragamba, Silverdale, Werombi, Theresa Park, Orangeville, Brownlow Hill, Glenmore, The Oaks, Mount Hunter, Cawdor, Camden Park, Mowbray Park, Razorback, Menangle, Picton, Douglas Park, Appin, Lakesland, Thirlmere, Maldon, Couridjah, Tahmoor, Buxton, Pheasants Nest, Wilton, Bargo, and Yanderra. The title 'WOLLONDILLY SHIRE' is written in large white letters across the top of the map.

# WOLLONDILLY SHIRE

## WOLLONDILLY

The Wollondilly Shire Local Government Area (LGA) has many unique towns and villages, ranging from Warragamba in the north to Yanderra in the south. The Shire is a large rural area that offers beautiful landscapes and has a strong sense of community spirit.

In 2019/20, the community of Wollondilly was significantly impacted by the Green Wattle Creek bushfire, resulting in the loss of private homes, wildlife, facilities, and hectares of National Park bushland. Following this tragic event, the community faced additional challenges with storm events and flood damage, exacerbating the strain on the community.

In consultation with residents, response agencies, and key stakeholders, Wollondilly Shire Council developed the Activate Wollondilly 2021: Long-Term Recovery and Resilience Plan. This plan aims to assist the community through recovery and resilience building, and it identifies key strategies to support and guide the recovery process.

Asset Mapping was identified as a key strategy to support the implementation of the plan. This document is designed to highlight and inform the community about the facilities and groups available in their local area that can provide help in times of need.

**Please Note:**

- It is the responsibility of the RFS to identify and communicate evacuation points accordingly during an emergency. These points are often Community Assets and Council will work with the RFS to support accurate communication to the community.
- Evacuation Routes can change during an emergency. It is important to seek current RFS information before taking action.

# Population Data

## WOLLONDILLY



A population of  
**54,176** people  
in total

**27,032**  
Male (50.1%)



**26,931**  
Female (49.9%)



**2,364**  
Indigenous (4.4%)



**5,552**  
Seniors (70+ Years)  
(10.3%)



**3,165**  
Employed  
(97.6%)

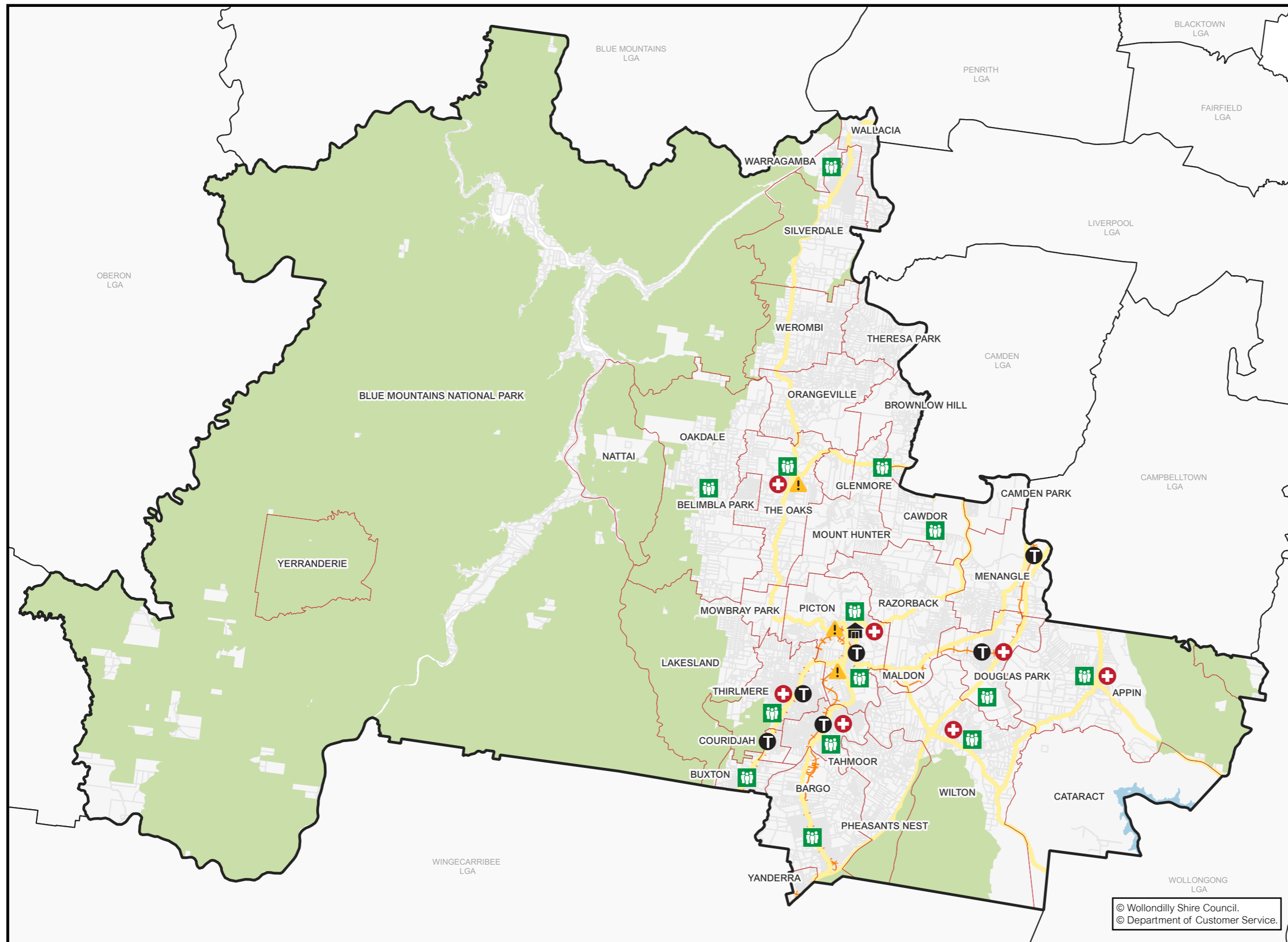


**5,992**  
Born Overseas  
(11.1%)








**322**  
Non-English  
Speaking (0.6%)

# WOLLONDILLY SHIRE MAP



**Legend**

-  Disaster/Emergency Services
-  Council Assets
-  Public Transport
-  Medical Facilities & Pharmacies
-  Neighbourhood Safer Spaces

© Wollondilly Shire Council.  
© Department of Customer Service.



EMERGENCY SERVICES	
Area	Information
Wollondilly	<p><b>Rural Fire Service - Bushfire Information Line</b> - Ph: 1800 679 737</p> <p><b>Rural Fire Service Wollondilly District Office</b> - Ph: (02) 4677 7000</p>
	<p><b>Wollondilly State Emergency Service (SES)</b>            65 Bridge Street, Picton, 2571            Ph: 132 500            Fb: <a href="https://www.facebook.com/NSWSESWDY">https://www.facebook.com/NSWSESWDY</a></p>
	<p><b>Picton Police Station</b>            86 Argyle St, Picton NSW 2571            Ph: (02) 4677 8999</p>
	<p><b>The Oaks Police Station</b>            57 Merlin St, The Oaks NSW 2570            Ph: (02) 4657 1142</p>
	<p><b>Picton Ambulance Station</b>            79/81 Old Hume Hwy, Picton NSW 2571</p>
	<p><b>Camden PAC Office</b>            278 Camden Valley Way            NARELLAN 2567            Ph: (02) 4632 4499</p>
	<p><b>Warragamba Police Station</b>            4 Third St, Warragamba NSW 2752            Ph: (02) 4774 1105</p>

COUNCIL ASSETS	
Area	Information
Wollondilly	<p><b>The Wollondilly Shire Hall</b>            44-60 Menangle Street, Picton NSW 2571            Ph: (02) 4677 1100            E: <a href="mailto:council@wollondilly.nsw.gov.au">council@wollondilly.nsw.gov.au</a></p>
	<p><b>Wollondilly Library</b>            42 Menangle Street, Picton NSW 2571            Ph: (02) 4677 8300            E: <a href="mailto:library@wollondilly.nsw.gov.au">library@wollondilly.nsw.gov.au</a>            Fb: <a href="https://www.facebook.com/WollondillyLibrary">https://www.facebook.com/WollondillyLibrary</a>            W: <a href="http://www.library.wollondilly.nsw.gov.au/home">http://www.library.wollondilly.nsw.gov.au/home</a></p>
	<p><b>Wollondilly Shire Council</b>            Frank McKay Building, 62-64 Menangle Street, Picton NSW 2571            Ph: (02) 4677 1100            E: <a href="mailto:council@wollondilly.nsw.gov.au">council@wollondilly.nsw.gov.au</a>            Fb: <a href="https://www.facebook.com/wollondilly">https://www.facebook.com/wollondilly</a>            W: <a href="https://www.wollondilly.nsw.gov.au">https://www.wollondilly.nsw.gov.au</a></p>

PUBLIC TRANSPORT	
Area	Information
Wollondilly	<b>Train Stations:</b> Menangle Park Douglas Park Picton Thirlmere Tahmoor Bargo Yerrinbool

MEDICAL FACILITIES & PHARMACIES	
Area	Information
Wollondilly	<b>Wollondilly Medical Centre</b> Centre, Shop 16/117 Remembrance Driveway, Tahmoor NSW 2573 Ph: (02) 4607 2905 W: hotdoc.com.au  <b>Wollondilly Specialist Medical Centre</b> Shop 15, Tahmoor Shopping Village (next to Foodworks), Cnr Remembrance Dr & Bronzewing St, Tahmoor NSW 2573 Ph: (02) 4683 0070  <b>Thirlmere Pharmacy</b> 29 Oak St, Thirlmere Ph: 4683 2866  <b>Wilton Pharmacy</b> 1 Greenbridge Drive, Wilton Ph: (02) 4630 9333  <b>Priceline Pharmacy Tahmoor</b> Shop 12 Tahmoor Town Centre, 117 Remembrance Driveway, Tahmoor NSW 2573 Ph: (02) 4681 8713  <b>Picton Discount Drug Store</b> Shop T25-T27/9 Margaret St, Picton NSW 2571 Ph: (02) 4677 1294  <b>Pharmacy 4 Less Tahmoor</b> Tahmoor Shopping Village 5&6, 161-173 Remembrance Driveway, Tahmoor NSW 2573 Ph: (02) 4681 0224  <b>The Oaks Village Pharmacy</b> 67 John St, The Oaks NSW 2570 Ph: (02) 4657 1387  <b>Appin Compounding Pharmacy</b> Shop 2/75 Appin Rd, Appin NSW 2560 Ph: (02) 4631 1488  <b>Douglas Park Pharmacy</b> Shop 2A/147 Camden Rd, Douglas Park NSW 2569 Ph: (02) 4632 8554

NEIGHBOURHOOD SAFER SPACES	
Area	Information
Wollondilly	<b>St Mary's Towers</b> 415 Douglas Park Drive, Douglas Park  <b>Wilton Community Centre</b> Broughton Street, Wilton  <b>Main Street Appin</b> Appin Road, Appin  <b>Land adjacent to Bargo Hotel</b> 225-227 Great Southern Road, Bargo  <b>Bargo Shops</b> Remembrance Drive, Bargo  <b>Hall within Bargo Showground</b> Radnor Road, Bargo  <b>Buxton Fire Shed</b> West Parade, Buxton  <b>The Oaks Public School</b> John Street, The Oaks  <b>The Oaks Hall</b> Russell Street, The Oaks  <b>Warragamba Public School Hall</b> Weir Road, Warragamba  <b>Oakdale Shops</b> Burratorang Road, Oakdale  <b>Oakdale Community Hall</b> Cnr Egans Road and Burratorang Road, Oakdale  <b>Mt Hunter Community Hall</b> Corner of Burratorang Rd and Clyde Place, Mt Hunter  <b>Cawdor Public School</b> 685 Cawdor Road, Cawdor  <b>Picton High School</b> 480 Argyle Street, Picton  <b>Picton Bowling Club</b> 55-56 Argyle Street, Picton  <b>Carpark between Coles &amp; Council Admin Building</b> Margaret Street, Picton  <b>Tahmoor Town Centre Carpark</b> Cnr of Thirlmere Way and Remembrance Drive, Tahmoor  <b>Wollondilly Youth Hub/ Community Centre</b> Harper Close, Tahmoor  <b>Thirlmere Public School</b> Oaks Street, Thirlmere  <b>Thirlmere Memorial Park</b> Oaks Street, Thirlmere





# APPIN CATARACT DARKES FOREST

Appin, a relaxed and friendly community on the eastern edge of Wollondilly, values its connection to sporting and volunteer associations surrounded by vast open space. Home to a protected koala population, the area prioritises the koala's safety during natural disasters and development. Appin and its neighbouring areas provide a rich source of history, nature, and a warm sense of community.

*Information contained in this document is derived from Wollondilly Shire Council's Community Strengths and Resources Questionnaire 2023 and is a documentation of community thoughts and opinions. Statistical data is sourced from id.community and is supported by ABS Census data 2021. <https://profile.id.com.au/wollondilly/about?WebID=220>*

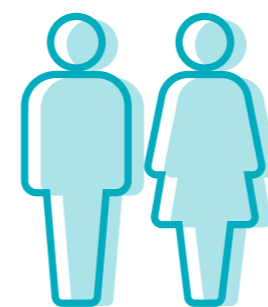


# Population Data

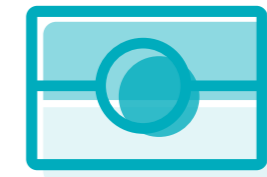
APPIN | CATARACT | DARKES FOREST



A population of **3,230** people in total



**1,649**  
Male (51.1%)  
**1,581**  
Female (48.9%)



**173**  
Indigenous  
(5.4%)



**207**  
Seniors  
(>70 Years)  
(6.4%)



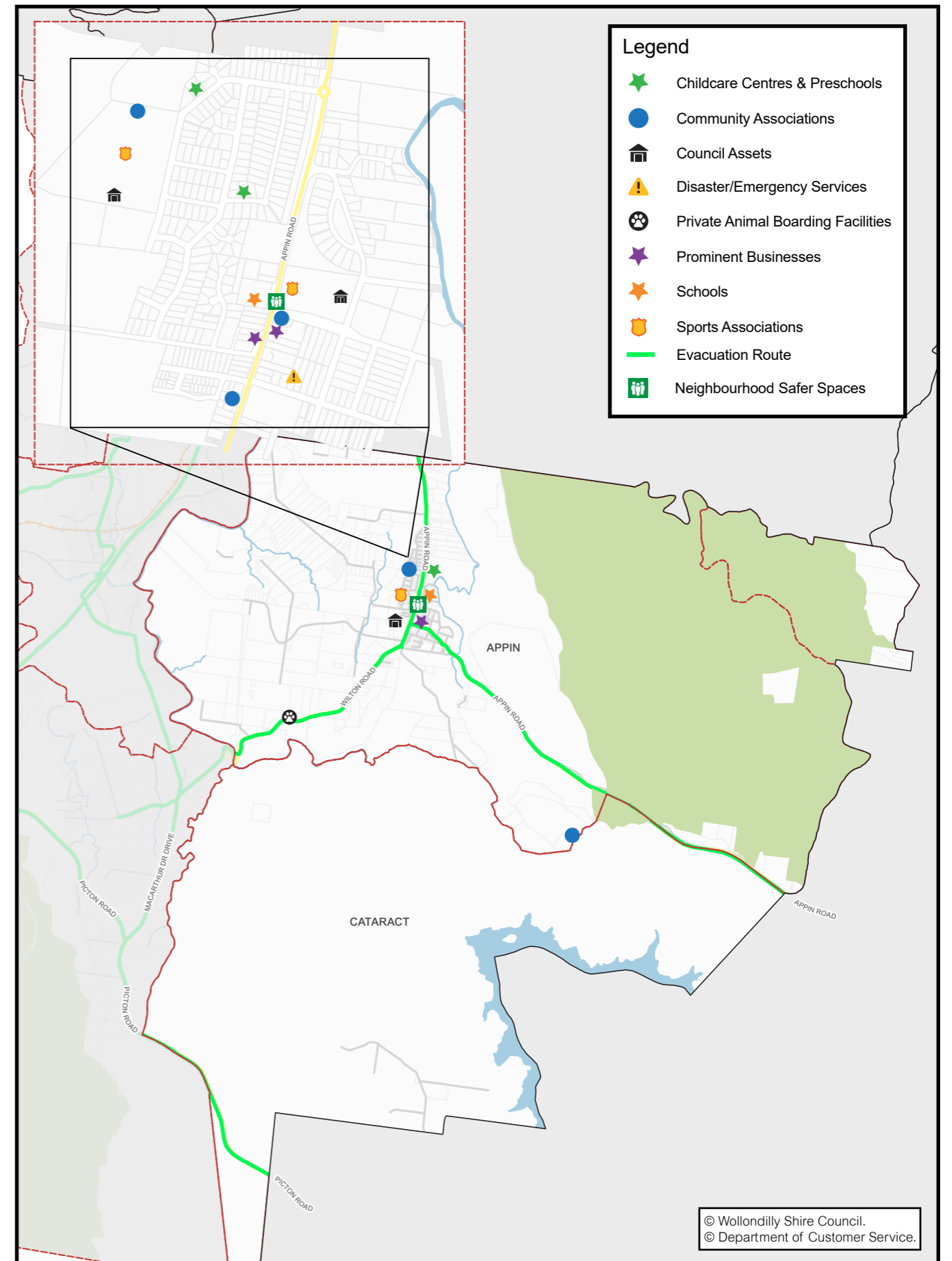
**384**  
Born Overseas (10.8%)



**24**  
Non-English  
Speaking  
(0.7%)



Appin Skate Park



A child wearing a helmet and riding a bicycle on a concrete ramp at a skate park. The image is overlaid with a green tint. Large, white, outlined text is superimposed over the scene, reading "AREAS & INFORMATION".

# AREAS & INFORMATION

DISASTER SERVICES	
Area	Information
All Areas	<p><b>Rural Fire Service - Bushfire Information Line</b> - Ph: 1800 679 737</p> <p><b>Rural Fire Service Wollondilly District Office</b> - Ph: 4677 7000</p> <p><b>Wollondilly State Emergency Service (SES)</b>            65 Bridge Street, Picton, 2571            Ph: 132 500            Fb: <a href="https://www.facebook.com/NSWSESWDY">https://www.facebook.com/NSWSESWDY</a></p>
Appin	<p><b>Appin Rural Fire Brigade</b>            King Street, Appin NSW 2560            Contact Name: Captain Darren Rolfe            Ph: (02) 4631 1111 / 0427983111            E: <a href="mailto:appinrfs.secretary@gmail.com">appinrfs.secretary@gmail.com</a>            Fb: <a href="https://facebook.com/appinRuralFireBrigade">https://facebook.com/appinRuralFireBrigade</a></p>
Cataract	NIL
Darkes Forest	<p><b>Darkes Forest Rural Fire Brigade</b>            302 Darkes Forest Road, Darkes Forest NSW 2508            E: <a href="mailto:darkesforestrfb@gmail.com">darkesforestrfb@gmail.com</a>            FB: <a href="https://www.facebook.com/darkesforestrfs">https://www.facebook.com/darkesforestrfs</a></p>

SCHOOLS	
Area	Information
Appin	<p><b>Appin Public School</b>            97 Appin Road, Appin NSW 2560            Ph: (02) 4631 1220            E: <a href="mailto:appin-p.school@det.nsw.edu.au">appin-p.school@det.nsw.edu.au</a>            Fb: <a href="https://www.facebook.com/AppinPublicSchool">https://www.facebook.com/AppinPublicSchool</a></p>
Cataract	NIL
Darkes Forest	NIL

CHILDCARE SERVICES & PRESCHOOLS	
Area	Information
Appin	<p><b>Bright Sparkes Early Learning Centre (1)</b>            30 Rixon Road, Appin NSW 2560            Ph: (02) 4631 1661            E: <a href="mailto:Rixon@brightsparkskids.com.au">Rixon@brightsparkskids.com.au</a>            Fb: <a href="https://www.facebook.com/BSparksAppin">https://www.facebook.com/BSparksAppin</a></p> <p><b>Bright Sparkes Early Learning Centre (2)</b>            33 Winton St, Appin NSW 2560            Ph: (02) 4631 1591            E: <a href="mailto:Winton@brightsparkskids.com.au">Winton@brightsparkskids.com.au</a>            Fb: <a href="https://www.facebook.com/BSparksAppin">https://www.facebook.com/BSparksAppin</a></p> <p><b>Bright Sparkes Early Learning Centre - OOSH</b>            Appin Public School, 97 Appin Rd, Appin NSW 2560            Ph: (02) 4631 1661 / 0437 422 745            E: <a href="mailto:OSHC@brightsparkskids.com.au">OSHC@brightsparkskids.com.au</a>            Fb: <a href="https://www.facebook.com/BSparksAppin">https://www.facebook.com/BSparksAppin</a></p>
Cataract	NIL
Darkes Forest	NIL

SPORTS ASSOCIATIONS	
Area	Information
Appin	<p><b>Appin Dogs Junior Rugby League Football Club</b>  Appin Park Reserve, 100 Appin Road, Appin NSW 2560  Ph: 0410 583 440  E: secretary@appindogsjrflc.com  Fb: <a href="https://www.facebook.com/Appin.JRLFC">https://www.facebook.com/Appin.JRLFC</a></p>
	<p><b>Appin Dogs Rugby League Football Club</b>  Appin Park Reserve, 100 Appin Road, Appin NSW 2560  Ph: 0451 001 067  E: appinrlfc@gmail.com  Fb: <a href="https://www.facebook.com/appindogs.rugbyleagueeniors">https://www.facebook.com/appindogs.rugbyleagueeniors</a></p>
	<p><b>Appin United Football Club</b>  Gordon Lewis Oval, 5 Sportsground Parade, Appin NSW 2560  Ph: 0421435 118  E: appinsecretary@gmail.com  Fb: <a href="https://www.facebook.com/AppinUnitedFC">https://www.facebook.com/AppinUnitedFC</a></p>
	<p><b>Appin Waratahs Netball Club</b>  Appin AIS Sports Ground, 40 Sportsground Parade Appin NSW 2560  Ph: 0430 562175  E: appinwaratahs@gmail.com  Fb: <a href="https://www.facebook.com/appinwaratahsnetballclub">https://www.facebook.com/appinwaratahsnetballclub</a></p>
	<p><b>Appin Waratahs Netball Club</b>  W: <a href="https://appin.nswtouch.com.au/about/">https://appin.nswtouch.com.au/about/</a>  Fb: <a href="https://www.facebook.com/appinwarriors/">https://www.facebook.com/appinwarriors/</a></p>
Cataract	NIL
Darkes Forest	NIL

COMMUNITY ASSOCIATIONS	
Area	Information
Appin	<p><b>Appin Men's Shed</b>  40 Sportsground Parade, Appin NSW 2560  Ph: Jim Stubbs 0417 400 096 / manyrods@bigpond.net.au /  Raymond Skee 0417 485 037 / rayslee@bigpond.net.au  W: <a href="https://mensshed.org">https://mensshed.org</a></p>
	<p><b>Appin Friendship Group</b>  Old Appin Inn, Appin Road, Appin NSW 2560  Ph: Lyn 0409 668 246 / Linda 0499 023 711</p>
	<p><b>Appin Historical Society</b>  55 Appin Road 2560</p>
Cataract	<p><b>Scouts Cataract Activity Centre</b>  Baden – Powell Drive Appin NSW 2567  Ph: (02) 46316697  E: cspbookings@nsw.scouts.com.au  W: <a href="https://cataract.nsw.scouts.com.au">https://cataract.nsw.scouts.com.au</a></p>
Darkes Forest	NIL

PROMINENT BUSINESSES	
Area	Information
All Areas	<p><b>Picton Chamber of Commerce (incl surrounding suburbs)</b> Fb: <a href="https://www.facebook.com/PictonChamberofCommerce">https://www.facebook.com/PictonChamberofCommerce</a></p> <p><b>Wollondilly Local Business Directory</b> Fb: <a href="https://www.facebook.com/groups/1305777129542823/">https://www.facebook.com/groups/1305777129542823/</a></p>
Appin	<p><b>Appin Bakery</b> 3/75 Appin Road, Appin NSW 2560 Ph: 4631 1448 E: <a href="mailto:appinbakery@yahoo.com.au">appinbakery@yahoo.com.au</a> Fb: <a href="https://www.facebook.com/AppinBakery">https://www.facebook.com/AppinBakery</a></p> <p><b>Appin Chamber of Commerce</b> 2/75 Appin Road, Appin NSW 2560 Ph: 0412 645 325 E: <a href="mailto:appinchamber@gmail.com">appinchamber@gmail.com</a> Fb: <a href="https://www.facebook.com/appinchamber/">https://www.facebook.com/appinchamber/</a></p> <p><b>Appin Hotel</b> 84 Appin Rd, Appin NSW 2560 Ph: 4631 1203 Fb: <a href="https://www.facebook.com/people/Appin-Hotel/100063699997492/">https://www.facebook.com/people/Appin-Hotel/100063699997492/</a></p> <p><b>Australia Post – Appin LPO</b> 4/73 Appin Road, Appin NSW 2560 Ph: 4631 1240</p> <p><b>IGA Appin</b> 80-82 Appin Road, Appin NSW 2560 Ph: 46311599 E: <a href="mailto:appiniga@gmail.com">appiniga@gmail.com</a> Fb: <a href="https://www.facebook.com/IGAAppin">https://www.facebook.com/IGAAppin</a></p>
Cataract	NIL
Darkes Forest	<p><b>Darkes Forest Riding Ranch</b> 448 Darkes Forest Rd, Darkes Forest NSW 2508 Ph: (02) 4294 3441 / 0428 943 441 Fb: <a href="https://www.facebook.com/darkesforestridingranch">https://www.facebook.com/darkesforestridingranch</a> W: <a href="https://www.darkesforestranch.com.au">https://www.darkesforestranch.com.au</a></p> <p><b>Andoran Stud Agistment and Succulent Nursery</b> 458 Darkes Forest Road, Darkes Forest NSW 2508 Ph: (02) 4294 3427 / 0419 449 483 E: <a href="mailto:abdirabstyd@bigpond.com">abdirabstyd@bigpond.com</a> W: <a href="http://www.andoranstud.com.au">http://www.andoranstud.com.au</a></p> <p><b>Darkes Cider</b> 259 Darkes Forest Road, Darkes Forest NSW 2508 Ph: (02) 4294 3421 E: <a href="mailto:info@darkes.com.au">info@darkes.com.au</a> Fb: <a href="https://www.facebook.com/DarkesCider">https://www.facebook.com/DarkesCider</a> W: <a href="https://www.darkes.com.au">https://www.darkes.com.au</a></p>

PRIVATE ANIMAL BOARDING FACILITIES	
Area	Information
Appin	<p><b>Belltrees Pet Resort</b> 514 Appin Road, Gilead NSW 2560 Ph: (02) 4631 1920 E: <a href="mailto:info@belltreespetretreat.com.au">info@belltreespetretreat.com.au</a> Fb: <a href="https://www.facebook.com/belltreesboard">https://www.facebook.com/belltreesboard</a></p> <p><b>Mt Britain Horse Agistment</b> Corner Wilton Road &amp; Quarter Sessions Road Appin NSW 2569 PH: 0412 789 652 E: <a href="mailto:ann.glen@mtbritain.com">ann.glen@mtbritain.com</a> W: <a href="https://www.mtbritain.com/home">https://www.mtbritain.com/home</a></p>
Cataract	NIL
Darkes Forest	<p><b>Darkes Forest Riding Ranch</b> 448 Darkes Forest Rd, Darkes Forest NSW 2508 Ph: (02) 4294 3441 / 0428 943 441 W: <a href="https://www.darkesforestranch.com.au">https://www.darkesforestranch.com.au</a></p> <p><b>Andoran Stud Agistment and Succulent Nursery</b> 458 Darkes Forest Road, Darkes Forest NSW 2508 Ph: (02) 4294 3427 / 0419 449 483 E: <a href="mailto:abdirabstyd@bigpond.com">abdirabstyd@bigpond.com</a></p> <p><b>Janannie Park Horse Agistment</b> 380 Darkes Forest Road, Darkes Forest NSW 2508 Ph: 0407 932 252 Fb: <a href="https://www.facebook.com/pages/Janannie-Park-Horse-Agistment/123635351382732">https://www.facebook.com/pages/Janannie-Park-Horse-Agistment/123635351382732</a></p>

ONLINE FACEBOOK COMMUNITY FORUMS & PAGES		
Area	Information	
All Areas	<p><b>Macarthur-Wollondilly Community Noticeboard</b> Fb: <a href="https://www.facebook.com/groups/1653921468167893/">https://www.facebook.com/groups/1653921468167893/</a></p> <p><b>Mayor Matt Gould</b> Fb: <a href="https://www.facebook.com/CrMattGould">https://www.facebook.com/CrMattGould</a></p> <p><b>Picton, Camden and surrounding suburbs Community Page</b> Fb: <a href="https://www.facebook.com/groups/861602960581170">https://www.facebook.com/groups/861602960581170</a></p> <p><b>Picton Wollondilly and Macarthur Community Noticeboard</b> Fb: <a href="https://www.facebook.com/groups/745054278934576/">https://www.facebook.com/groups/745054278934576/</a></p> <p><b>What's Happening in Wollondilly</b> Fb: <a href="https://www.facebook.com/groups/2853710421546044/">https://www.facebook.com/groups/2853710421546044/</a></p> <p><b>Wollondilly Living</b> Fb: <a href="https://www.facebook.com/groups/wollondillyliving/about/">https://www.facebook.com/groups/wollondillyliving/about/</a></p> <p><b>Wollondilly Community Living</b> Fb: <a href="https://www.facebook.com/groups/973623299396093/">https://www.facebook.com/groups/973623299396093/</a></p> <p><b>Wollondilly Incidents &amp; Alerts</b> Fb: <a href="https://www.facebook.com/groups/wollondilly/">https://www.facebook.com/groups/wollondilly/</a></p> <p><b>Wollondilly Community Noticeboard</b> Fb: <a href="https://www.facebook.com/groups/945217202158492/">https://www.facebook.com/groups/945217202158492/</a></p> <p><b>Wollondilly Life</b> Fb: <a href="https://www.facebook.com/groups/200220494140376/">https://www.facebook.com/groups/200220494140376/</a></p> <p><b>Wollondilly Shire Council</b> Fb: <a href="https://www.facebook.com/wollondilly">https://www.facebook.com/wollondilly</a></p>	
	Appin	<p><b>Appin Community Group</b> Fb: <a href="https://www.facebook.com/groups/955660015254289">https://www.facebook.com/groups/955660015254289</a></p> <p><b>Appin Community Public Group</b> Fb: <a href="https://www.facebook.com/groups/378324376472188/">https://www.facebook.com/groups/378324376472188/</a></p>
	Cataract	NIL
	Darkes Forest	<p><b>Darkes Forest Community</b> Fb: <a href="https://www.facebook.com/Darkes-Forest-Community-1643290845989981-">https://www.facebook.com/Darkes-Forest-Community-1643290845989981-</a></p>

COUNCIL ASSETS	
Area	Information
Appin	<p><b>Appin AIS Community Hall</b> 40 Sportsground Parade, Appin NSW Ph: (02) 4677 1100 E: <a href="mailto:council@wollondilly.nsw.gov.au">council@wollondilly.nsw.gov.au</a></p> <p><b>Appin AIS Sportsground Clubhouse</b> 40 Sportsground Parade, Appin NSW Ph: (02) 4677 1100 E: <a href="mailto:council@wollondilly.nsw.gov.au">council@wollondilly.nsw.gov.au</a></p> <p><b>Appin Park Reserve</b> 100 Appin Road, Appin NSW 2560 Off leash area, Skatepark and Sportsground E: <a href="mailto:council@wollondilly.nsw.gov.au">council@wollondilly.nsw.gov.au</a></p>
Cataract	NIL
Darkes Forest	NIL

NEIGHBOURHOOD SAFER SPACES	
Area	Information
Appin	<p><b>Main Street Appin</b> Appin Road, Appin</p>
Cataract	NIL
Darkes Forest	NIL





**Wollondilly**  
Shire Council

[www.wollondilly.nsw.gov.au](http://www.wollondilly.nsw.gov.au)