



Wollondilly
Shire Council

ASSET MAPPING & COMMUNITY PROFILES PROJECT

DOUGLAS PARK | WILTON

2023



Acknowledgement^{*}

Wollondilly Shire Council acknowledges the traditional custodians of the land in Wollondilly, the Dharawal and Gundungurra peoples.

We acknowledge the living culture and spiritual connections to the land for the Dharawal and Gundungurra people and all Aboriginal Nation Groups that may have connections to the area; and that Wollondilly is remarkably placed as the intersection of many tribal lands.

We recognise the traditional Custodians who have occupied and cared for this Country over countless generations and celebrate their continuing contributions to the Shire.

We also acknowledge and remember the Dharawal and Gundungurra peoples who were killed in the Appin Massacre on 17 April 1816.

**We acknowledge our continuing collaboration with the Tharawal Local Aboriginal Land Council*

CONTENTS

Acknowledgement of Country	3
About Wollondilly Shire	7
Population Data	9
Wollondilly Shire Map	10
Emergency Services	13
Council Assets	13
Public Transport	14
Medical Facilities & Pharmacies	14
Neighbourhood Safer Spaces	15
About Douglas Park & Wilton	16
Population Data	19
Area Map	21
Areas & Information	22
Disaster Services	24
Schools	24
Childcare Services & Preschools	25
Sports Associations	26
Community Associations	27
Prominent Businesses	27
Private Animal Boarding Facilities	28
Online Facebook Community Forums & Pages	29
Council Assets	30
Neighbourhood Safer Spaces	30

A map of Wollondilly Shire with various towns labeled. The map is overlaid on a green-to-teal gradient background. The towns labeled include Wallactia, Warragamba, Silverdale, Werombi, Theresa Park, Orangeville, Brownlow Hill, Glenmore, The Oaks, Mount Hunter, Cawdor, Camden Park, Menangle, Razorback, Mowbray Park, Picton, Douglas Park, Appin, Lakesland, Thirlmere, Maldon, Couridjah, Tahmoor, Buxton, Pheasants Nest, Wilton, Bargo, and Yanderra. The title 'WOLLONDILLY SHIRE' is written in large white letters across the top of the map.

WOLLONDILLY SHIRE

WOLLONDILLY

The Wollondilly Shire Local Government Area (LGA) has many unique towns and villages, ranging from Warragamba in the north to Yanderra in the south. The Shire is a large rural area that offers beautiful landscapes and has a strong sense of community spirit.

In 2019/20, the community of Wollondilly was significantly impacted by the Green Wattle Creek bushfire, resulting in the loss of private homes, wildlife, facilities, and hectares of National Park bushland. Following this tragic event, the community faced additional challenges with storm events and flood damage, exacerbating the strain on the community.

In consultation with residents, response agencies, and key stakeholders, Wollondilly Shire Council developed the Activate Wollondilly 2021: Long-Term Recovery and Resilience Plan. This plan aims to assist the community through recovery and resilience building, and it identifies key strategies to support and guide the recovery process.

Asset Mapping was identified as a key strategy to support the implementation of the plan. This document is designed to highlight and inform the community about the facilities and groups available in their local area that can provide help in times of need.

Please Note:

- It is the responsibility of the RFS to identify and communicate evacuation points accordingly during an emergency. These points are often Community Assets and Council will work with the RFS to support accurate communication to the community.
- Evacuation Routes can change during an emergency. It is important to seek current RFS information before taking action.

Population Data

WOLLONDILLY



A population of
54,176 people
in total

27,032
Male (50.1%)



26,931
Female (49.9%)



2,364
Indigenous (4.4%)



5,552
Seniors (70+ Years)
(10.3%)



3,165
Employed
(97.6%)

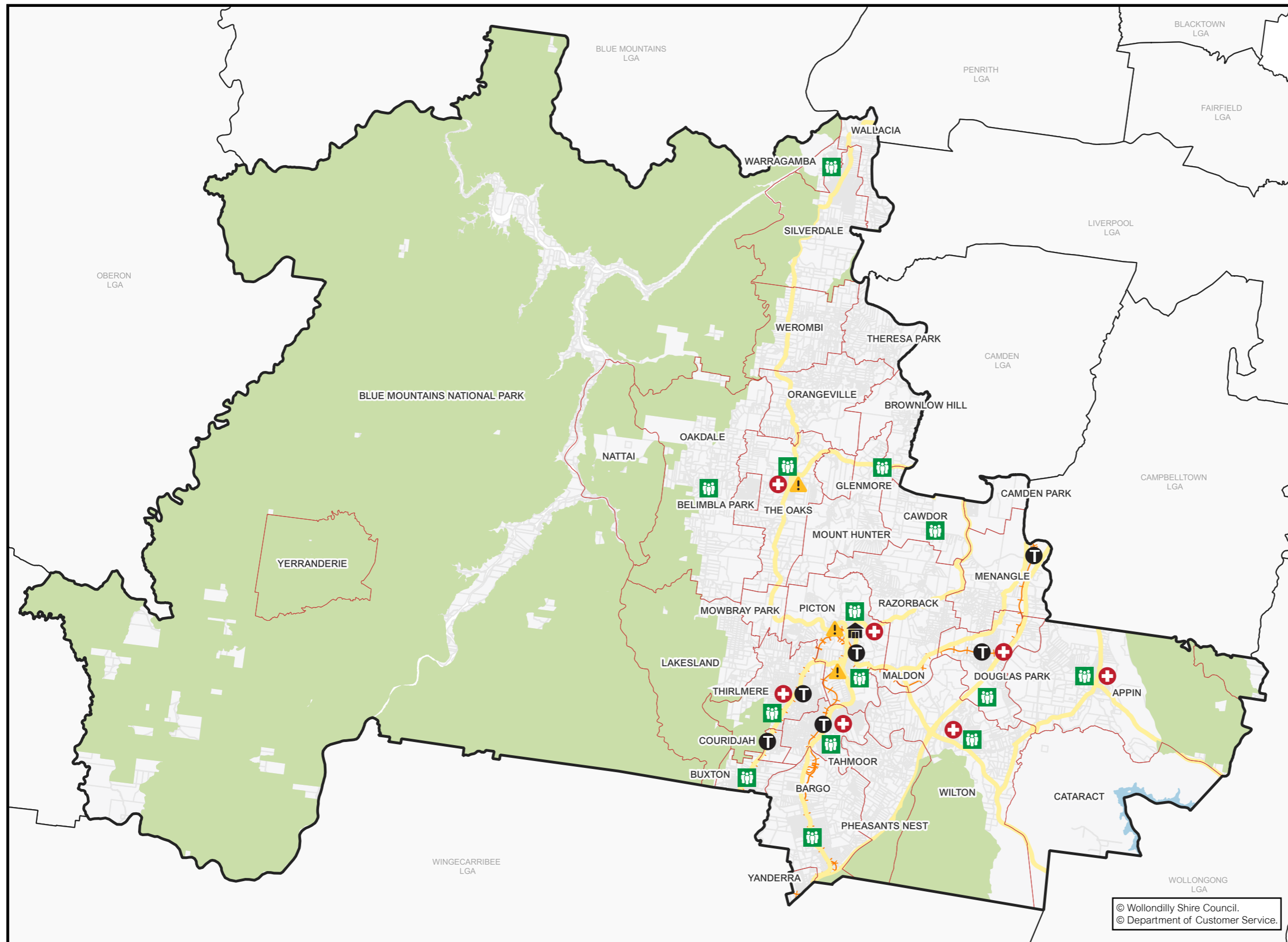


5,992
Born Overseas
(11.1%)








322
Non-English
Speaking (0.6%)

WOLLONDILLY SHIRE MAP



Legend

-  Disaster/Emergency Services
-  Council Assets
-  Public Transport
-  Medical Facilities & Pharmacies
-  Neighbourhood Safer Spaces



EMERGENCY SERVICES	
Area	Information
Wollondilly	<p>Rural Fire Service - Bushfire Information Line - Ph: 1800 679 737</p> <p>Rural Fire Service Wollondilly District Office - Ph: (02) 4677 7000</p>
	<p>Wollondilly State Emergency Service (SES) 65 Bridge Street, Picton, 2571 Ph: 132 500 Fb: https://www.facebook.com/NSWSESWDY</p>
	<p>Picton Police Station 86 Argyle St, Picton NSW 2571 Ph: (02) 4677 8999</p>
	<p>The Oaks Police Station 57 Merlin St, The Oaks NSW 2570 Ph: (02) 4657 1142</p>
	<p>Picton Ambulance Station 79/81 Old Hume Hwy, Picton NSW 2571</p>
	<p>Camden PAC Office 278 Camden Valley Way NARELLAN 2567 Ph: (02) 4632 4499</p>
	<p>Warragamba Police Station 4 Third St, Warragamba NSW 2752 Ph: (02) 4774 1105</p>

COUNCIL ASSETS	
Area	Information
Wollondilly	<p>The Wollondilly Shire Hall 44-60 Menangle Street, Picton NSW 2571 Ph: (02) 4677 1100 E: council@wollondilly.nsw.gov.au</p>
	<p>Wollondilly Library 42 Menangle Street, Picton NSW 2571 Ph: (02) 4677 8300 E: library@wollondilly.nsw.gov.au Fb: https://www.facebook.com/WollondillyLibrary W: http://www.library.wollondilly.nsw.gov.au/home</p>
	<p>Wollondilly Shire Council Frank McKay Building, 62-64 Menangle Street, Picton NSW 2571 Ph: (02) 4677 1100 E: council@wollondilly.nsw.gov.au Fb: https://www.facebook.com/wollondilly W: https://www.wollondilly.nsw.gov.au</p>

PUBLIC TRANSPORT	
Area	Information
Wollondilly	Train Stations: Menangle Park Douglas Park Picton Thirlmere Tahmoor Bargo Yerrinbool

MEDICAL FACILITIES & PHARMACIES	
Area	Information
Wollondilly	Wollondilly Medical Centre Centre, Shop 16/117 Remembrance Driveway, Tahmoor NSW 2573 Ph: (02) 4607 2905 W: hotdoc.com.au Wollondilly Specialist Medical Centre Shop 15, Tahmoor Shopping Village (next to Foodworks), Cnr Remembrance Dr & Bronzewing St, Tahmoor NSW 2573 Ph: (02) 4683 0070 Thirlmere Pharmacy 29 Oak St, Thirlmere Ph: 4683 2866 Wilton Pharmacy 1 Greenbridge Drive, Wilton Ph: (02) 4630 9333 Priceline Pharmacy Tahmoor Shop 12 Tahmoor Town Centre, 117 Remembrance Driveway, Tahmoor NSW 2573 Ph: (02) 4681 8713 Picton Discount Drug Store Shop T25-T27/9 Margaret St, Picton NSW 2571 Ph: 4677 1294 Pharmacy 4 Less Tahmoor Tahmoor Shopping Village 5&6, 161-173 Remembrance Driveway, Tahmoor NSW 2573 Ph: (02) 4681 0224 The Oaks Village Pharmacy 67 John St, The Oaks NSW 2570 Ph: (02) 4657 1387 Appin Compounding Pharmacy Shop 2/75 Appin Rd, Appin NSW 2560 Ph: (02) 4631 1488 Douglas Park Pharmacy Shop 2A/147 Camden Rd, Douglas Park NSW 2569 Ph: (02) 4632 8554

NEIGHBOURHOOD SAFER SPACES	
Area	Information
Wollondilly	St Mary's Towers 415 Douglas Park Drive, Douglas Park Wilton Community Centre Broughton Street, Wilton Main Street Appin Appin Road, Appin Land adjacent to Bargo Hotel 225-227 Great Southern Road, Bargo Bargo Shops Remembrance Drive, Bargo Hall within Bargo Showground Radnor Road, Bargo Buxton Fire Shed West Parade, Buxton The Oaks Public School John Street, The Oaks The Oaks Hall Russell Street, The Oaks Warragamba Public School Hall Weir Road, Warragamba Oakdale Shops Burragorang Road, Oakdale Oakdale Community Hall Cnr Egans Road and Burragorang Road, Oakdale Mt Hunter Community Hall Corner of Burragorang Rd and Clyde Place, Mt Hunter Cawdor Public School 685 Cawdor Road, Cawdor Picton High School 480 Argyle Street, Picton Picton Bowling Club 55-56 Argyle Street, Picton Carpark between Coles & Council Admin Building Margaret Street, Picton Tahmoor Town Centre Carpark Cnr of Thirlmere Way and Remembrance Drive, Tahmoor Wollondilly Youth Hub/ Community Centre Harper Close, Tahmoor Thirlmere Public School Oaks Street, Thirlmere Thirlmere Memorial Park Oaks Street, Thirlmere



DOUGLAS PARK WILTON

Wilton and Douglas Park, thriving suburbs within the Wollondilly Shire, offer a delightful blend of urban and rural living. As these communities continue to grow, they maintain a close-knit spirit, providing residents with access to local sporting, educational opportunities, and commercial facilities.

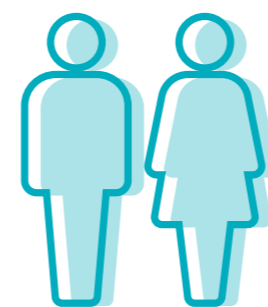
Information contained in this document is derived from Wollondilly Shire Council's Community Strengths and Resources Questionnaire 2023 and is a documentation of community thoughts and opinions. Statistical data is sourced from id.community and is supported by ABS Census data 2021. <https://profile.id.com.au/wollondilly/about?WebID=220>

Population Data

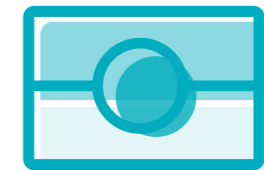
DOUGLAS PARK | WILTON



A population of
5,157 people
in total



2,645
Male (51.3%)
2,512
Female (48.7%)



143
Indigenous
(2.8%)



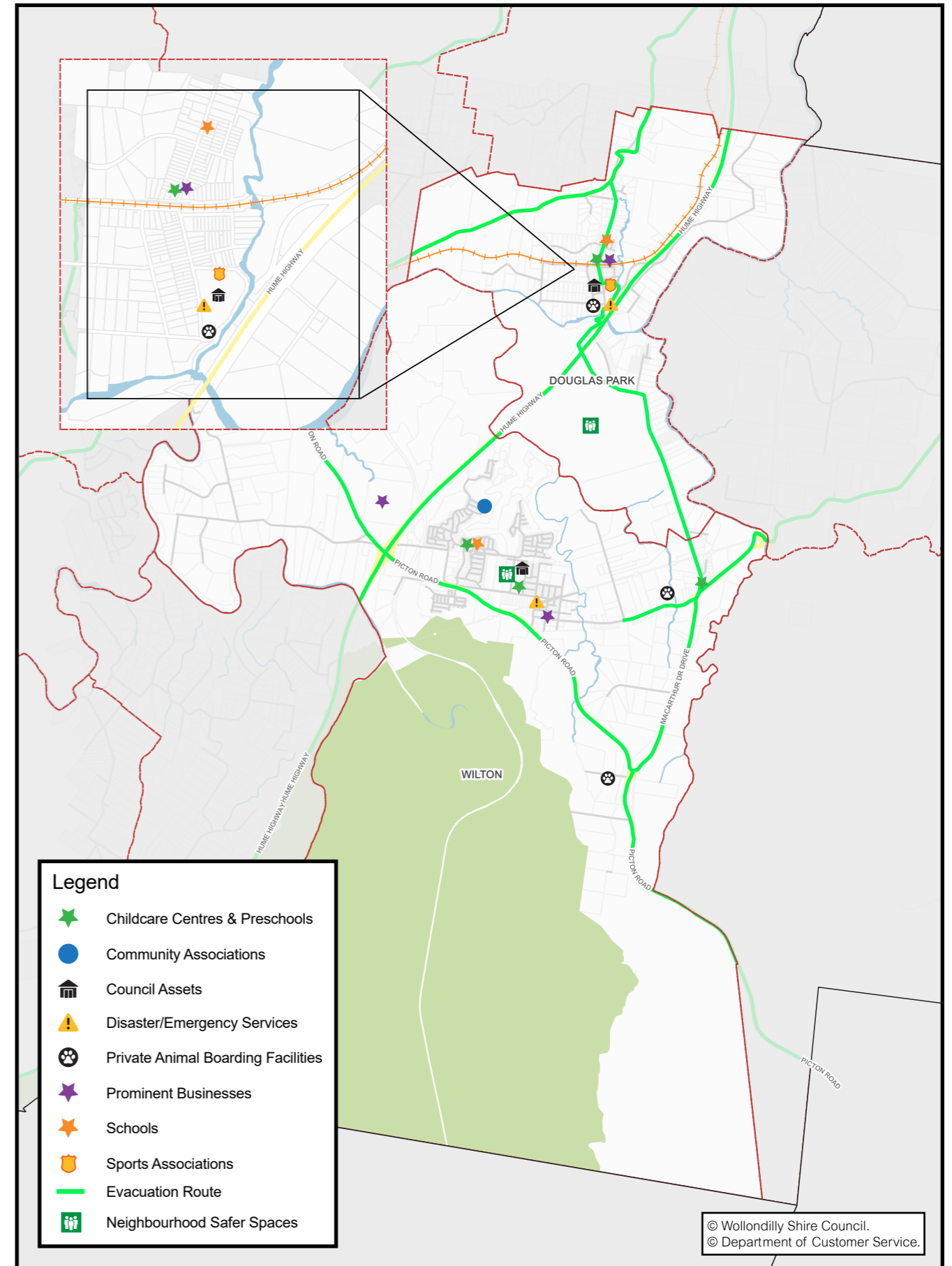
376
Seniors
(>70 Years)
(7.3%)

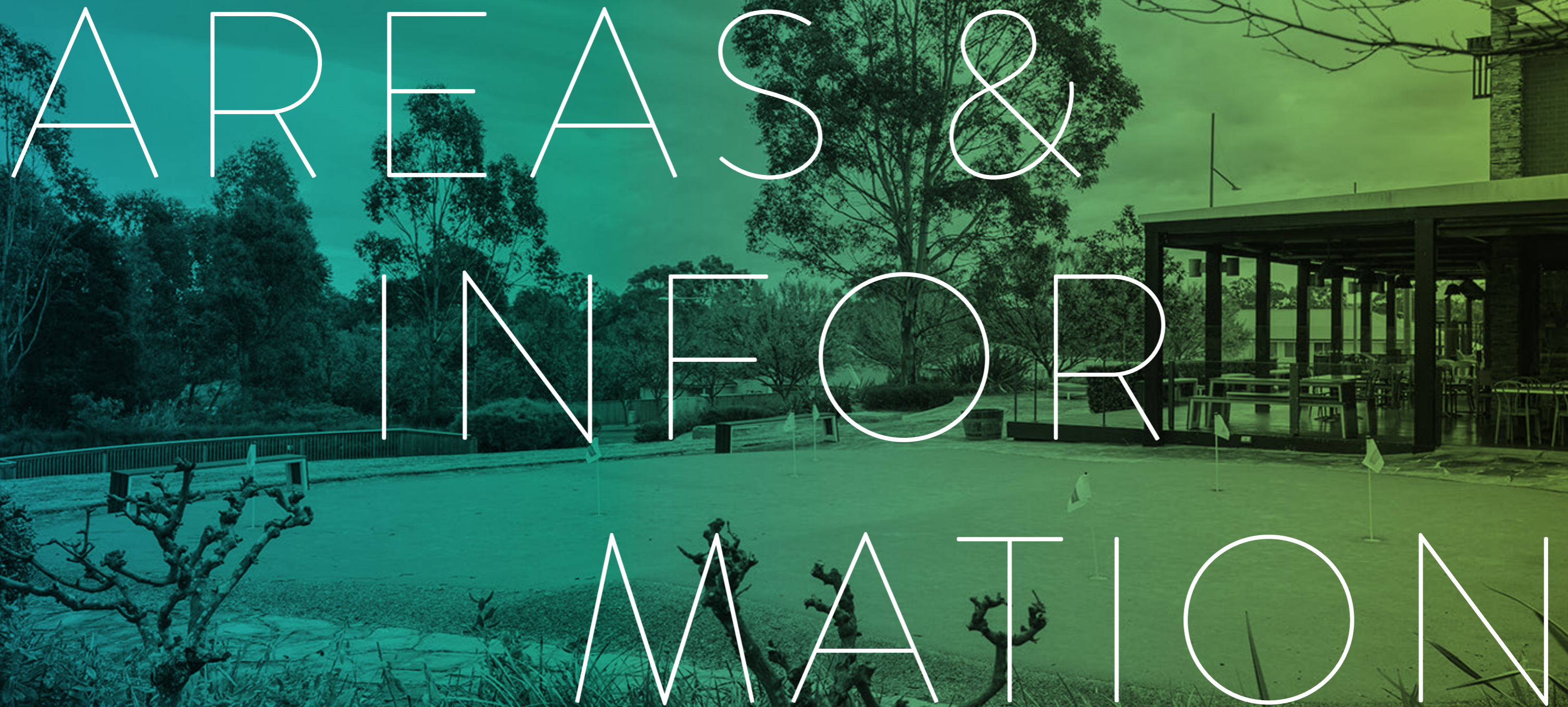


582
Born Overseas
(11.3%)



24
Non-English
Speaking
(0.5%)





AREAS & INFORMATION FOR

DISASTER SERVICES	
Area	Information
All Areas	<p>Rural Fire Service - Bushfire Information Line - Ph: 1800 679 737</p> <p>Rural Fire Service Wollondilly District Office - Ph: 4677 7000</p> <p>Wollondilly State Emergency Service (SES) 65 Bridge Street, Picton, 2571 Ph: 132 500 Fb: https://www.facebook.com/NSWSESWDY</p>
Douglas Park	<p>Douglas Park Rural Fire Brigade Camden Road, Douglas Park NSW 2569 Ph: (02) 4677 7000 Fb: https://www.facebook.com/DouglasParkVolunteerRuralFireBrigade</p>
Wilton	<p>Wilton Rural Fire Brigade Cnr Almond and Wonson Avenue, Wilton NSW 2571 Ph: (02) 4677 7000 Fb: https://www.facebook.com/WiltonRuralFireBrigade</p>

SCHOOLS	
Area	Information
Douglas Park	<p>Douglas Park Public School 111 Camden Road, Douglas Park NSW 2569 Ph: (02) 4632 7261 E: douglaspk-p.school@det.nsw.edu.au</p>
Wilton	<p>Wilton Public School Greenbridge Drive, Wilton NSW 2571 Ph: (02) 4630 8006 E: wilton-p.school@det.nsw.edu.au Fb: https://www.facebook.com/pages/Wilton-Public-School/262984750407343</p>

CHILDCARE SERVICES & PRESCHOOLS	
Area	Information
Douglas Park	<p>Fidgety Frogs Early Learning Centre 148 Camden Road, Douglas Park NSW 2569 Ph: (02) 4632 7090 E: dpark@fidgetyfrogs.com.au W: http://www.fidgetyfrogs.com.au</p>
Wilton	<p>Bingara Gorge Community Preschool 1 Jackson Lane, Wilton NSW 2571 Ph: (02) 4630 9507 E: bgcps@bigfatsmile.com.au W: https://bigfatsmile.com.au</p>
	<p>Bingara Gorge Fun Club (OSHC) 1 Jackson Lane, Wilton NSW 2571 Ph: (02) 4630 9174 E: bingaragorge@bigfatsmile.com.au W: https://bigfatsmile.com.au</p>
	<p>Cath's Kindy Preschool and Early Years Learning Centre 18 Douglas Park Drive, Wilton NSW 2571 Ph: (02) 4630 8106 E: cath@cathskindy.com.au Fb: https://www.facebook.com/cathskindy W: https://cathskindy.com.au</p>
	<p>Wollondilly Mobile Community Preschool Broughton Street, Wilton NSW 2571 Ph: 0427 045 905 E: wmcps@bigfatsmile.com.au W: https://bigfatsmile.com.au</p>

SPORTS ASSOCIATIONS		
Area	Information	
Douglas Park	<p>Douglas Park Wilton FC 195 Camden Road, Douglas Park NSW 2569 E: infodpwfc@gmail.com W: https://www.douglasparkwiltonfc.com.au/home</p> <p>Douglas Park Wilton Athletics Club Douglas Park Sports Ground, Camden Road, Douglas Park NSW 2569 Ph: 0403 120 665 E: info@douglasparkathletics.com</p> <p>Douglas Park Wilton Netball Club Douglas Park Sports Ground, 195 Camden Road, Douglas Park NSW 2569 E: douglasparknetballclub@gmail.com / dpwnetballclub@gmail.com Fb: https://www.facebook.com/DouglasParkWiltonNetballClub</p> <p>Douglas Park Wilton Physical Culture Club Douglas Park Community Hall, 195 Camden Road, Douglas Park NSW 2569 E: dpwphysie@gmail.com Fb: https://www.facebook.com/DouglasParkPhysicalCultureClub/ W: http://www.burnsphysie.com.au/</p> <p>Douglas Park Wilton FC 195 Camden Road, Douglas Park NSW 2569 E: infodpwfc@gmail.com W: https://www.douglasparkwiltonfc.com.au/home</p> <p>Douglas Park Wilton Athletics Club Douglas Park Sports Ground, Camden Road, Douglas Park NSW 2569 Ph: 0403 120 665 E: info@douglasparkathletics.com</p> <p>Douglas Park Tennis Club Douglas Park Sports Ground, 195 Camden Road, Douglas Park NSW 2569 Ph: 0419 146 992 E: dougparktennis@gmail.com Fb: https://www.facebook.com/douglasparktennisclub</p>	
	Wilton	<p>Douglas Park Wilton FC 195 Camden Road, Douglas Park NSW 2569 E: infodpwfc@gmail.com W: https://www.douglasparkwiltonfc.com.au/home</p> <p>Douglas Park Wilton Athletics Club Douglas Park Sports Ground, Camden Road, Douglas Park NSW 2569 Ph: 0403 120 665 E: info@douglasparkathletics.com</p> <p>Douglas Park Wilton Netball Club Douglas Park Sports Ground, 195 Camden Road, Douglas Park NSW 2569 E: douglasparknetballclub@gmail.com / dpwnetballclub@gmail.com Fb: https://www.facebook.com/DouglasParkWiltonNetballClub</p> <p>Douglas Park Wilton Physical Culture Club Douglas Park Community Hall, 195 Camden Road, Douglas Park NSW 2569 E: dpwphysie@gmail.com Fb: https://www.facebook.com/DouglasParkPhysicalCultureClub/ W: http://www.burnsphysie.com.au/</p>

COMMUNITY ASSOCIATIONS	
Area	Information
Douglas Park	<p>Communities at Bingara – Bingara Living 50 The Irons Drive, Wilton NSW 2571 Ph: (02) 4630 8500 E: communities@bingara.net.au W: https://www.bingaraliving.com.au</p>
Wilton	NIL

PROMINENT BUSINESSES	
Area	Information
Douglas Park	<p>Douglas Park Post Office LPO 145 Camden Road, Douglas Park NSW 2569 Ph: (02) 4632 7240</p> <p>Douglas Park Cellars & Service Station 145 Camden Road, Douglas Park NSW 2569 Ph: (02) 4632 7436</p> <p>Douglas Park Pharmacy Shop2A/147 Camden Road, Douglas Park NSW 2569 Ph: (02) 4632 8554</p>
	<p>Australia Post – Wilton LPO Shell Service Station, 1109 Argyle Street, Wilton NSW 2571 Ph: (02) 4630 9455</p> <p>Shell Wilton 1109 Argyle Street, Wilton NSW 2571 Ph: (02) 4630 9455</p> <p>Sydney Skydivers 745 Picton Road, Wilton NSW 2571 Ph: (02) 9791 9155 E: support@sydneyskydivers.com.au Fb: https://www.facebook.com/1300SkydiveSydney/ W: https://www.sydneyskydivers.com.au</p>
	Wilton

PRIVATE ANIMAL BOARDING FACILITIES	
Area	Information
Douglas Park	<p>M & J Agistment & Spelling (horses) Douglas Park NSW 2569 Ph: 0402 006 669 E: mjagistmentspelling@gmail.com Fb: https://www.facebook.com/mjagistmentspelling/ W: https://www.mjagistmentspelling.com/about-us</p>
Wilton	<p>Kylie's K9 Country Retreat 25 Alkoomie Place, Wilton NSW 2571 Ph: 0408 207 162 E: info@k9countryretreat.com.au Fb: https://www.facebook.com/kyliesK9 W: http://www.anakysamoyeds.com/kylies-k9-country-retreat.html</p> <p>Wilmslow Park Horse Agistment 15 Alkoomie Place, Wilton NSW 2571 Ph: 0421 735 133 / 0417 540 042 E: info@wilmslowpark.net / rosanttyler1@bigpond.com Fb: https://www.facebook.com/WilmslowParkAgistment W: http://www.wilmslowpark.net</p> <p>Jocida Park Horse Agistment 135 Wilton Road, Wilton NSW 2571 Ph: 0401 327 141 E: lucindahewitt135@gmail.com W: https://www.jocidapark.com.au/index.htm</p>

ONLINE FACEBOOK COMMUNITY FORUMS & PAGES	
Area	Information
All Areas	<p>Macarthur-Wollondilly Community Noticeboard Fb: https://www.facebook.com/groups/1653921468167893/</p> <p>Mayor Matt Gould Fb: https://www.facebook.com/CrMattGould</p> <p>Picton, Camden and surrounding suburbs Community Page Fb: https://www.facebook.com/groups/861602960581170</p> <p>Picton Wollondilly and Macarthur Community Noticeboard Fb: https://www.facebook.com/groups/745054278934576/</p> <p>What's Happening in Wollondilly Fb: https://www.facebook.com/groups/2853710421546044/</p> <p>Wollondilly Living Fb: https://www.facebook.com/groups/wollondillyliving/about/</p> <p>Wollondilly Community Living Fb: https://www.facebook.com/groups/973623299396093/</p> <p>Wollondilly Incidents & Alerts Fb: https://www.facebook.com/groups/wollondilly/</p> <p>Wollondilly Community Noticeboard Fb: https://www.facebook.com/groups/945217202158492/</p> <p>Wollondilly Life Fb: https://www.facebook.com/groups/200220494140376/</p> <p>Wollondilly Shire Council Fb: https://www.facebook.com/wollondilly</p>
Douglas Park	<p>Douglas Park Community Watch Fb: https://www.facebook.com/groups/414525819032005</p> <p>Douglas Park /Wilton Community Noticeboard Fb: https://www.facebook.com/groups/1651085178492214</p> <p>Douglas Park Neighbourhood Fb: https://www.facebook.com/groups/1746266279003192</p> <p>Wilton/Douglas Park & Surrounds Services & Trades Fb: https://www.facebook.com/groups/servicesandtrades</p> <p>Online Garage Sale – Wilton/Douglas Park and Surrounds Fb: https://www.facebook.com/groups/WiltonGarageSale</p> <p>Community Mail Noticeboard Douglas Park Wilton and Bingara Gorge - Fb: https://www.facebook.com/groups/329082217559788</p>

ONLINE FACEBOOK COMMUNITY FORUMS & PAGES (CONTINUED)	
Area	Information
Wilton	Bingara Gorge Community Group Fb: https://www.facebook.com/groups/1617583941889568
	Wilton Community Fb: https://www.facebook.com/WiltonNSWcommunity
	Douglas Park / Wilton Community Noticeboard Fb: https://www.facebook.com/groups/1651085178492214
	Wilton/Douglas Park & Surrounds Services & Trades Fb: https://www.facebook.com/groups/servicesandtrades
	Online Garage Sale – Wilton/Douglas Park and Surrounds Fb: https://www.facebook.com/groups/WiltonGarageSale

COUNCIL ASSETS	
Area	Information
Douglas Park	Douglas Park Community Hall 195 Camden Road, Douglas Park NSW 2569 Ph: 0481 342 665 E: dp355bookings@gmail.com
	Douglas Park Sports Ground 195 Camden Road, Douglas Park NSW 2569 Ph: (02) 4677 1100 E: council@wollondilly.nsw.gov.au
Wilton	Wilton Community Hall 20 Broughton Street, Wilton NSW 2571 Ph: (02) 4677 1100 E: council@wollondilly.nsw.gov.au
	Wilton Recreation Reserve Wilton Recreation Reserve (Hannaford Oval) 20 Broughton Street, WILTON, NSW, 2571 Ph: (02) 4677 1100 E: council@wollondilly.nsw.gov.au

NEIGHBOURHOOD SAFER SPACES	
Area	Information
Douglas Park	St Mary's Towers 415 Douglas Park Drive, Douglas Park
Wilton	Wilton Community Centre Broughton Street, Wilton





Wollondilly
Shire Council

www.wollondilly.nsw.gov.au