



Wollondilly  
Shire Council

# ASSET MAPPING & COMMUNITY PROFILES PROJECT

PICTON | MOWBRAY PARK | MALDON

2023

---



# Acknowledgement<sup>\*</sup>

Wollondilly Shire Council acknowledges the traditional custodians of the land in Wollondilly, the Dharawal and Gundungurra peoples.

We acknowledge the living culture and spiritual connections to the land for the Dharawal and Gundungurra people and all Aboriginal Nation Groups that may have connections to the area; and that Wollondilly is remarkably placed as the intersection of many tribal lands.

We recognise the traditional Custodians who have occupied and cared for this Country over countless generations and celebrate their continuing contributions to the Shire.

We also acknowledge and remember the Dharawal and Gundungurra peoples who were killed in the Appin Massacre on 17 April 1816.

*\*We acknowledge our continuing collaboration with the Tharawal Local Aboriginal Land Council*

# CONTENTS

<b>Acknowledgement of Country</b>	<b>3</b>
<b>About Wollondilly Shire</b>	<b>7</b>
<b>Population Data</b>	<b>9</b>
<b>Wollondilly Shire Map</b>	<b>10</b>
<b>Emergency Services</b>	<b>13</b>
<b>Council Assets</b>	<b>13</b>
<b>Public Transport</b>	<b>14</b>
<b>Medical Facilities &amp; Pharmacies</b>	<b>14</b>
<b>Neighbourhood Safer Spaces</b>	<b>15</b>
<b>About Silverdale, Wallacia &amp; Warragamba</b>	<b>16</b>
<b>Population Data</b>	<b>19</b>
<b>Area Map</b>	<b>20</b>
<b>Areas &amp; Information</b>	<b>22</b>
<b>Disaster Services</b>	<b>24</b>
<b>Schools</b>	<b>24</b>
<b>Childcare Services &amp; Preschools</b>	<b>25</b>
<b>Sports Associations</b>	<b>26</b>
<b>Private Animal Boarding Facilities</b>	<b>27</b>
<b>Online Facebook Community Forums &amp; Pages</b>	<b>28</b>
<b>Council Assets</b>	<b>29</b>
<b>Prominent Businesses</b>	<b>30</b>
<b>Community Associations</b>	<b>31</b>
<b>Neighbourhood Safer Spaces</b>	<b>31</b>

A map of Wollondilly Shire, Australia, showing various towns and villages. The map is overlaid with a green-to-teal gradient. The towns labeled include Wallactia, Warragamba, Silverdale, Werombi, Theresa Park, Orangeville, Brownlow Hill, Glenmore, The Oaks, Mount Hunter, Cawdor, Camden Park, Menangle, Razorback, Mowbray Park, Picton, Douglas Park, Appin, Lakesland, Thirlmere, Maldon, Couridjah, Tahmoor, Buxton, Pheasants Nest, Wilton, Bargo, and Yanderra. The title 'WOLLONDILLY SHIRE' is prominently displayed in large white letters across the top half of the map.

# WOLLONDILLY SHIRE

## WOLLONDILLY

The Wollondilly Shire Local Government Area (LGA) has many unique towns and villages, ranging from Warragamba in the north to Yanderra in the south. The Shire is a large rural area that offers beautiful landscapes and has a strong sense of community spirit.

In 2019/20, the community of Wollondilly was significantly impacted by the Green Wattle Creek bushfire, resulting in the loss of private homes, wildlife, facilities, and hectares of National Park bushland. Following this tragic event, the community faced additional challenges with storm events and flood damage, exacerbating the strain on the community.

In consultation with residents, response agencies, and key stakeholders, Wollondilly Shire Council developed the Activate Wollondilly 2021: Long-Term Recovery and Resilience Plan. This plan aims to assist the community through recovery and resilience building, and it identifies key strategies to support and guide the recovery process.

Asset Mapping was identified as a key strategy to support the implementation of the plan. This document is designed to highlight and inform the community about the facilities and groups available in their local area that can provide help in times of need.

**Please Note:**

- It is the responsibility of the RFS to identify and communicate evacuation points accordingly during an emergency. These points are often Community Assets and Council will work with the RFS to support accurate communication to the community.
- Evacuation Routes can change during an emergency. It is important to seek current RFS information before taking action.

# Population Data

## WOLLONDILLY



A population of  
**54,176** people  
in total

**27,032**  
Male (50.1%)



**26,931**  
Female (49.9%)



**2,364**  
Indigenous (4.4%)



**5,552**  
Seniors (70+ Years)  
(10.3%)



**3,165**  
Employed  
(97.6%)

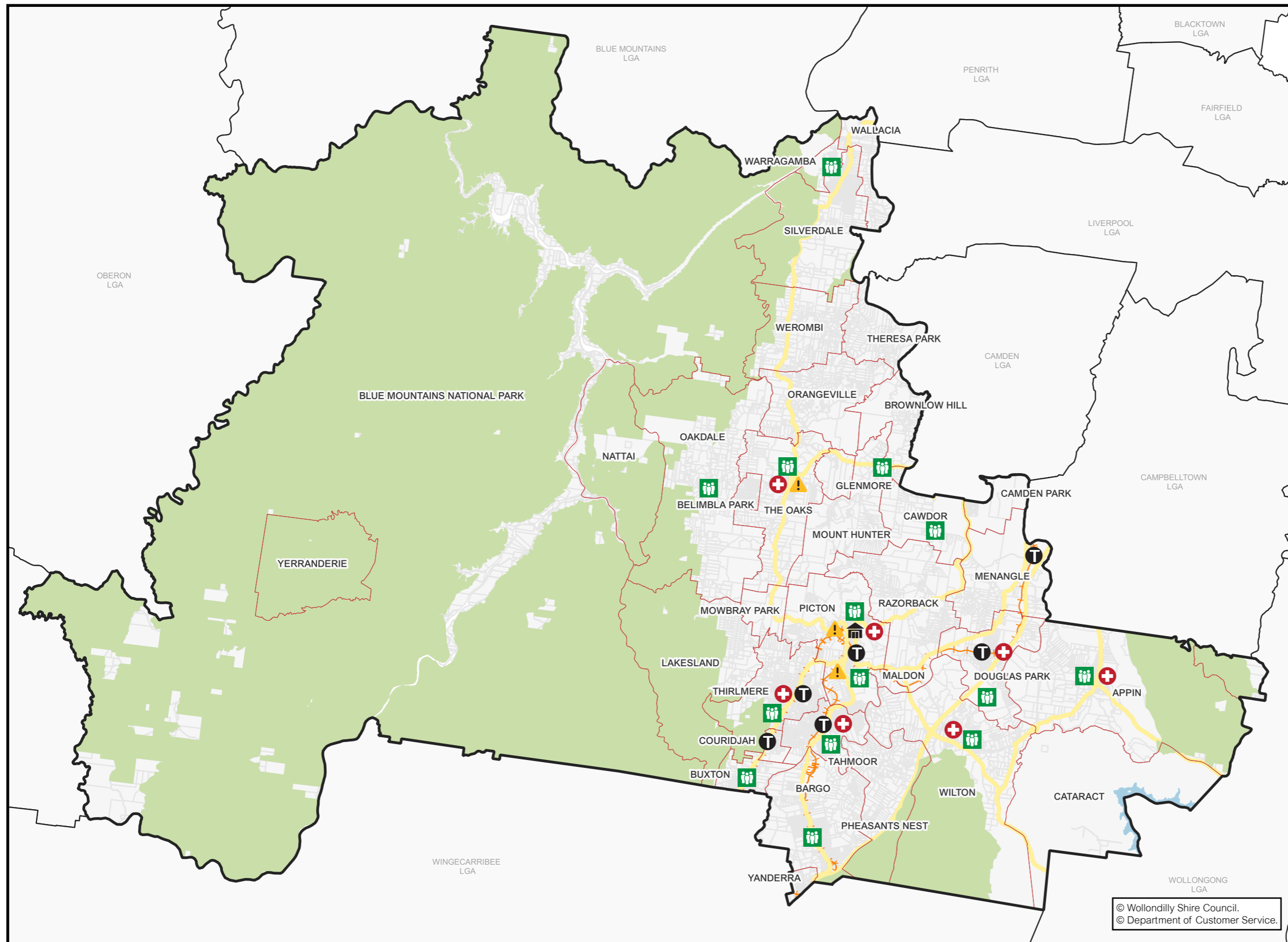


**5,992**  
Born Overseas  
(11.1%)








**322**  
Non-English  
Speaking (0.6%)

# WOLLONDILLY SHIRE MAP



**Legend**

-  Disaster/Emergency Services
-  Council Assets
-  Public Transport
-  Medical Facilities & Pharmacies
-  Neighbourhood Safer Spaces

© Wollondilly Shire Council.  
© Department of Customer Service.



EMERGENCY SERVICES	
Area	Information
Wollondilly	<p><b>Rural Fire Service - Bushfire Information Line</b> - Ph: 1800 679 737</p> <p><b>Rural Fire Service Wollondilly District Office</b> - Ph: (02) 4677 7000</p>
	<p><b>Wollondilly State Emergency Service (SES)</b>            65 Bridge Street, Picton, 2571            Ph: 132 500            Fb: <a href="https://www.facebook.com/NSWSESWDY">https://www.facebook.com/NSWSESWDY</a></p>
	<p><b>Picton Police Station</b>            86 Argyle St, Picton NSW 2571            Ph: (02) 4677 8999</p>
	<p><b>The Oaks Police Station</b>            57 Merlin St, The Oaks NSW 2570            Ph: (02) 4657 1142</p>
	<p><b>Picton Ambulance Station</b>            79/81 Old Hume Hwy, Picton NSW 2571</p>
	<p><b>Camden PAC Office</b>            278 Camden Valley Way            NARELLAN 2567            Ph: (02) 4632 4499</p>
	<p><b>Warragamba Police Station</b>            4 Third St, Warragamba NSW 2752            Ph: (02) 4774 1105</p>

COUNCIL ASSETS	
Area	Information
Wollondilly	<p><b>The Wollondilly Shire Hall</b>            44-60 Menangle Street, Picton NSW 2571            Ph: (02) 4677 1100            E: <a href="mailto:council@wollondilly.nsw.gov.au">council@wollondilly.nsw.gov.au</a></p>
	<p><b>Wollondilly Library</b>            42 Menangle Street, Picton NSW 2571            Ph: (02) 4677 8300            E: <a href="mailto:library@wollondilly.nsw.gov.au">library@wollondilly.nsw.gov.au</a>            Fb: <a href="https://www.facebook.com/WollondillyLibrary">https://www.facebook.com/WollondillyLibrary</a>            W: <a href="http://www.library.wollondilly.nsw.gov.au/home">http://www.library.wollondilly.nsw.gov.au/home</a></p>
	<p><b>Wollondilly Shire Council</b>            Frank McKay Building, 62-64 Menangle Street, Picton NSW 2571            Ph: (02) 4677 1100            E: <a href="mailto:council@wollondilly.nsw.gov.au">council@wollondilly.nsw.gov.au</a>            Fb: <a href="https://www.facebook.com/wollondilly">https://www.facebook.com/wollondilly</a>            W: <a href="https://www.wollondilly.nsw.gov.au">https://www.wollondilly.nsw.gov.au</a></p>

PUBLIC TRANSPORT	
Area	Information
Wollondilly	<b>Train Stations:</b> Menangle Park Douglas Park Picton Thirlmere Tahmoor Bargo Yerrinbool

MEDICAL FACILITIES & PHARMACIES	
Area	Information
Wollondilly	<b>Wollondilly Medical Centre</b> Centre, Shop 16/117 Remembrance Driveway, Tahmoor NSW 2573 Ph: (02) 4607 2905 W: hotdoc.com.au  <b>Wollondilly Specialist Medical Centre</b> Shop 15, Tahmoor Shopping Village (next to Foodworks), Cnr Remembrance Dr & Bronzewing St, Tahmoor NSW 2573 Ph: (02) 4683 0070  <b>Thirlmere Pharmacy</b> 29 Oak St, Thirlmere Ph: 4683 2866  <b>Wilton Pharmacy</b> 1 Greenbridge Drive, Wilton Ph: (02) 4630 9333  <b>Priceline Pharmacy Tahmoor</b> Shop 12 Tahmoor Town Centre, 117 Remembrance Driveway, Tahmoor NSW 2573 Ph: (02) 4681 8713  <b>Picton Discount Drug Store</b> Shop T25-T27/9 Margaret St, Picton NSW 2571 Ph: 4677 1294  <b>Pharmacy 4 Less Tahmoor</b> Tahmoor Shopping Village 5&6, 161-173 Remembrance Driveway, Tahmoor NSW 2573 Ph: (02) 4681 0224  <b>The Oaks Village Pharmacy</b> 67 John St, The Oaks NSW 2570 Ph: (02) 4657 1387  <b>Appin Compounding Pharmacy</b> Shop 2/75 Appin Rd, Appin NSW 2560 Ph: (02) 4631 1488  <b>Douglas Park Pharmacy</b> Shop 2A/147 Camden Rd, Douglas Park NSW 2569 Ph: (02) 4632 8554

NEIGHBOURHOOD SAFER SPACES	
Area	Information
Wollondilly	<b>St Mary's Towers</b> 415 Douglas Park Drive, Douglas Park  <b>Wilton Community Centre</b> Broughton Street, Wilton  <b>Main Street Appin</b> Appin Road, Appin  <b>Land adjacent to Bargo Hotel</b> 225-227 Great Southern Road, Bargo  <b>Bargo Shops</b> Remembrance Drive, Bargo  <b>Hall within Bargo Showground</b> Radnor Road, Bargo  <b>Buxton Fire Shed</b> West Parade, Buxton  <b>The Oaks Public School</b> John Street, The Oaks  <b>The Oaks Hall</b> Russell Street, The Oaks  <b>Warragamba Public School Hall</b> Weir Road, Warragamba  <b>Oakdale Shops</b> Burragorang Road, Oakdale  <b>Oakdale Community Hall</b> Cnr Egans Road and Burragorang Road, Oakdale  <b>Mt Hunter Community Hall</b> Corner of Burragorang Rd and Clyde Place, Mt Hunter  <b>Cawdor Public School</b> 685 Cawdor Road, Cawdor  <b>Picton High School</b> 480 Argyle Street, Picton  <b>Picton Bowling Club</b> 55-56 Argyle Street, Picton  <b>Carpark between Coles &amp; Council Admin Building</b> Margaret Street, Picton  <b>Tahmoor Town Centre Carpark</b> Cnr of Thirlmere Way and Remembrance Drive, Tahmoor  <b>Wollondilly Youth Hub/ Community Centre</b> Harper Close, Tahmoor  <b>Thirlmere Public School</b> Oaks Street, Thirlmere  <b>Thirlmere Memorial Park</b> Oaks Street, Thirlmere



# PICTON, MOWBRAY PARK & MALDON

Picton, is the community, cultural and civic hub of Wollondilly. Located within the rolling hills, Picton is the administrative, services and commercial hub of Wollondilly. This heritage rich area is home to many of the community's assets, such as schools, sports and community associations.

The surrounding villages of Mowbray Park and Maldon have strong historical connections to agricultural practices that are still being used today. These villages rely on their close community connection and proximity to Picton in order to access most services and facilities.

*Information contained in this document is derived from Wollondilly Shire Council's Community Strengths and Resources Questionnaire 2023 and is a documentation of community thoughts and opinions. Statistical data is sourced from id.community and is supported by ABS Census data 2021. <https://profile.id.com.au/wollondilly/about?WebID=220>*

La Crema Cafe 4677 3993

La Crema Cafe

Design Roast  
Design Roast  
We roast our  
coffee in our  
great local area  
and a sustainable  
coffee house  
for you

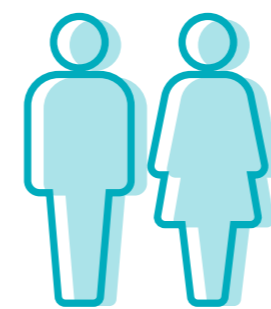


# Population Data

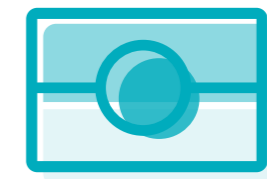
PICTON | MOWBRAY PARK | MALDON



A population of  
**5,404** people  
in total



**2,710**  
Male (50.2%)  
**2,688**  
Female (49.8%)



**206**  
Indigenous  
(3.8%)



**518**  
Seniors  
(>70 Years)  
(9.7%)

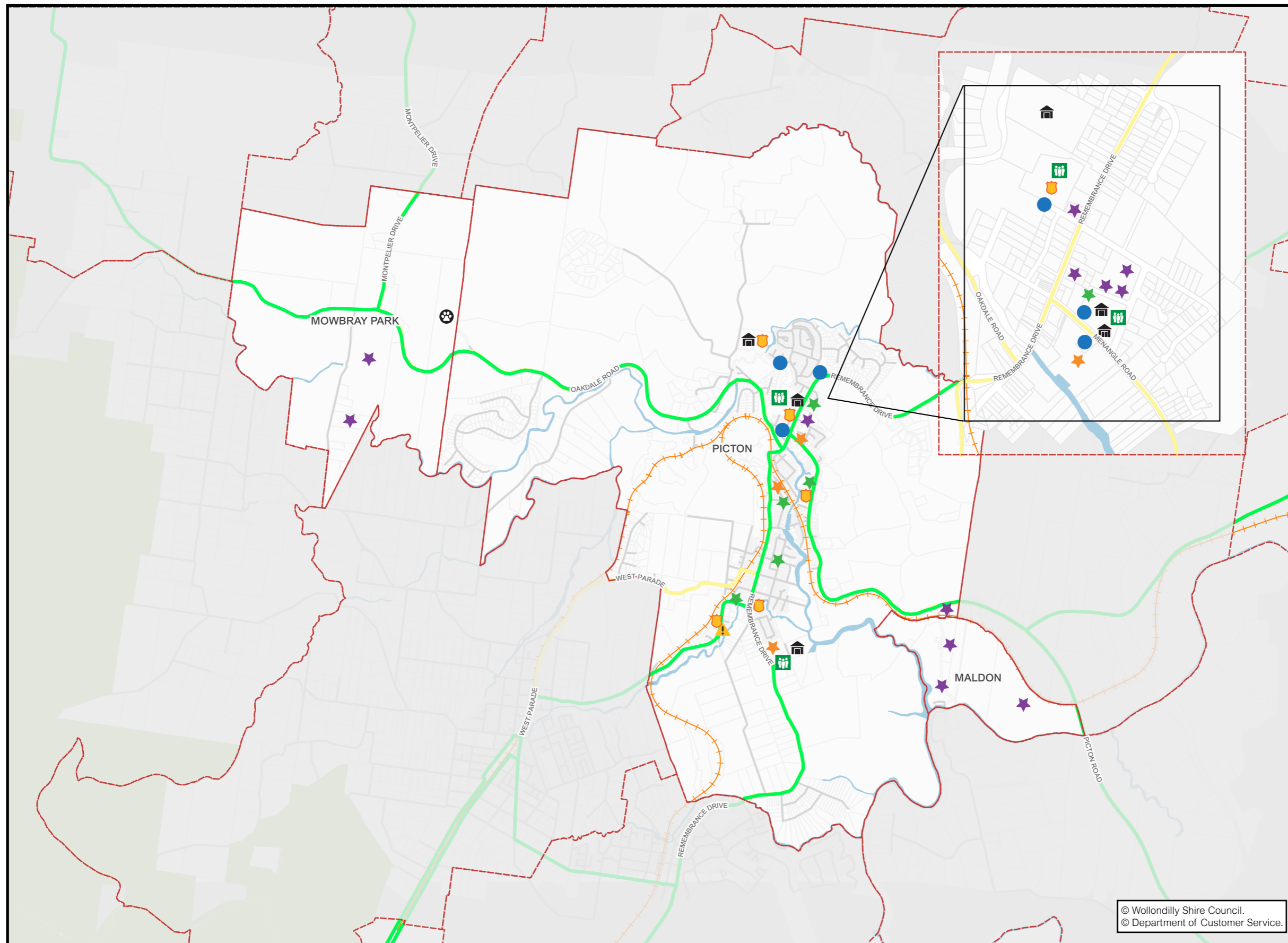


**629**  
Born Overseas  
(11.7%)



**16**  
Non-English  
Speaking  
(0.3%)

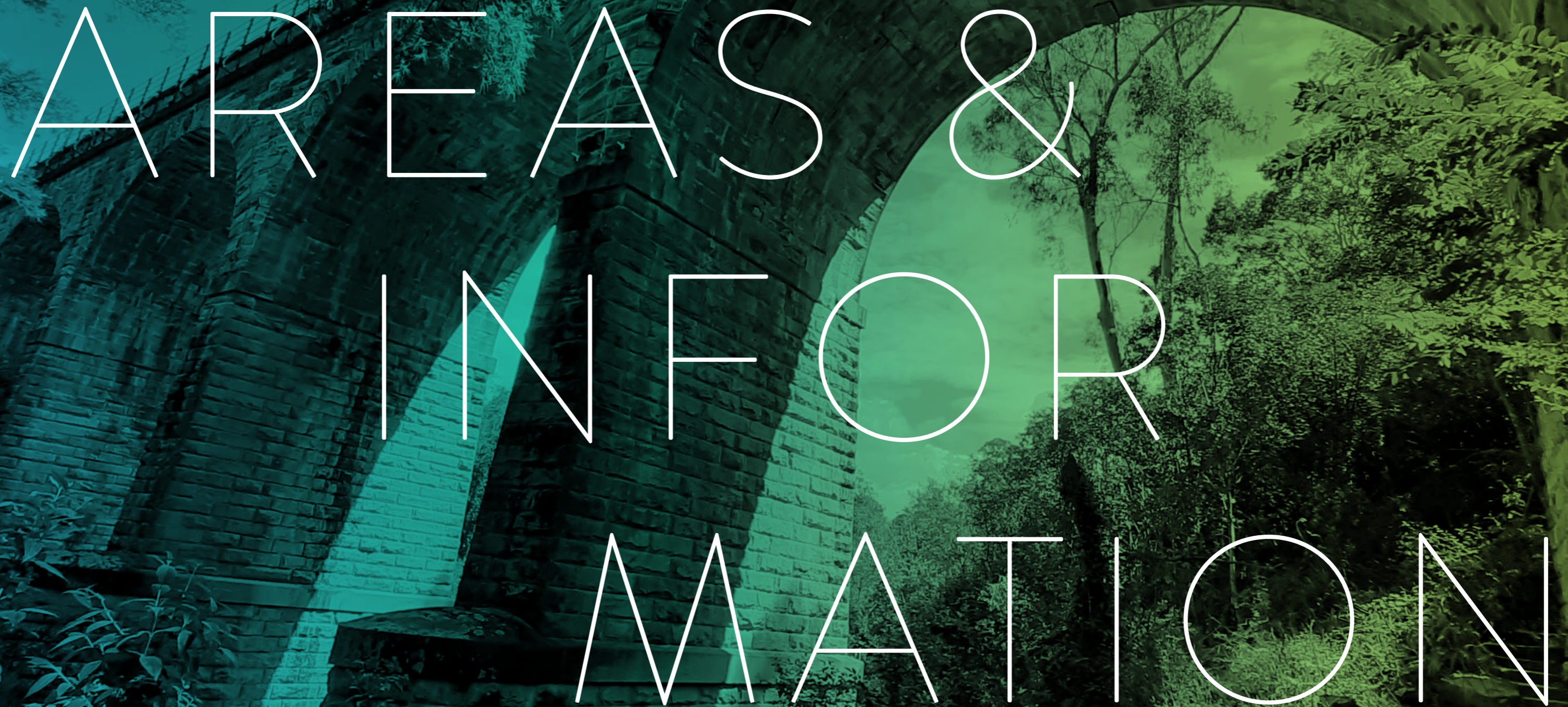
# AREA MAP



**Legend**

- Childcare Centres & Preschools
- Community Associations
- Council Assets
- Disaster/Emergency Services
- Private Animal Boarding Facilities
- Prominent Businesses
- Schools
- Sports Associations
- Evacuation Route
- Neighbourhood Safer Spaces

© Wollondilly Shire Council.  
© Department of Customer Service.



# AREAS & INFORMATION

DISASTER SERVICES	
Area	Information
All Areas	<b>Rural Fire Service- Bushfire Information Line</b> Ph: 1800 679 737
	<b>Rural Fire Servicer Wollondilly District Office</b> Ph: (02) 4677 7000
	<b>Wollondilly State Emergency Service (SES)</b> 65 Bridge Street, Picton, 2571 Ph: 132 500 Fb: <a href="https://www.facebook.com/NSWSESWDY">https://www.facebook.com/NSWSESWDY</a>
Picton	<b>Picton Rural Fire Brigade</b> 65 Bridge Street, Picton NSW 2571 Ph: (02) 4677 7000 E: dilly-man@hotmail.com Fb: <a href="https://www.facebook.com/pictonruralfirebrigade">https://www.facebook.com/pictonruralfirebrigade</a>

SCHOOLS	
Area	Information
Picton	<b>Picton Public School</b> 27 Lumsdaine Street, Picton NSW 2571 Ph: (02) 4677 1497 E: <a href="mailto:picton-p.school@det.nsw.edu.au">picton-p.school@det.nsw.edu.au</a>
	<b>St Anthony's Catholic Primary School</b> 69 Menangle Street, Picton NSW 2571 Ph: (02) 4677 1689 E: <a href="mailto:info@sapdow.catholic.edu.au">info@sapdow.catholic.edu.au</a>
	<b>Picton High School</b> 480 Argyle Street, Picton NSW 2571 Ph: (02) 4677 1242 E: <a href="mailto:picton-h.school@det.nsw.edu.au">picton-h.school@det.nsw.edu.au</a>
Mowbray Park	NIL
Maldon	NIL

CHILDCARE SERVICES & PRESCHOOLS	
Area	Information
Picton	<b>Picton Community Preschool (Big Fat Smile)</b> 9b Wild Street, Picton NSW 2571 Ph: (02) 4677 1762 Fb: <a href="https://www.facebook.com/bigfatsmile.com.au/">https://www.facebook.com/bigfatsmile.com.au/</a> W: <a href="https://bigfatsmile.com.au/centre/picton-preschool/">https://bigfatsmile.com.au/centre/picton-preschool/</a>
	<b>Sugar and Spice Preschool &amp; Long Day Care Centre</b> 145 Menangle Street, Picton NSW 2571 Ph: (02) 4677 2511 E: <a href="mailto:sugarandspicepreschool@bigpond.com">sugarandspicepreschool@bigpond.com</a> Fb: <a href="https://www.facebook.com/sugarandspicepicton">https://www.facebook.com/sugarandspicepicton</a>
	<b>The Early Learning Hub Picton</b> 16 Bridge Street, Picton NSW 2571 Ph: (02) 4677 2295 E: <a href="mailto:admin@theearlylearninghub.com.au">admin@theearlylearninghub.com.au</a> W: <a href="https://www.theearlylearninghub.com.au/picton">https://www.theearlylearninghub.com.au/picton</a>
	<b>The Y NSW Picton OSHC</b> Picton Public School, 27 Lunsdaine Street, Picton NSW 2571 Ph: 0437 357 289 W: <a href="https://www.ymcansw.org.au/centres/ymca-picton-oshc/">https://www.ymcansw.org.au/centres/ymca-picton-oshc/</a>
	<b>Wollondilly Family Day Care</b> 42A Menangle Street, Picton NSW 2571 Ph: (02) 4677 8200 E: <a href="mailto:fdc@wollondilly.nsw.gov.au">fdc@wollondilly.nsw.gov.au</a> W: <a href="https://www.wollondilly.nsw.gov.au/services-and-facilities/family-day-care/cost-hours-and-contact/">https://www.wollondilly.nsw.gov.au/services-and-facilities/family-day-care/cost-hours-and-contact/</a>
	<b>Wollondilly Year Round Care</b> Wollondilly Shire Hall - 52 Menangle Street, Picton, NSW, 2571 Ph: (02) 4677 8202 E: <a href="mailto:ycrc@wollondilly.nsw.gov.au">ycrc@wollondilly.nsw.gov.au</a> W: <a href="https://www.wollondilly.nsw.gov.au/services-and-facilities/before-and-after-school-care/hours-and-contact/">https://www.wollondilly.nsw.gov.au/services-and-facilities/before-and-after-school-care/hours-and-contact/</a>
Mowbray Park	NIL
Maldon	NIL

SPORTS ASSOCIATIONS	
Area	Information
Picton	<p><b>Bridge Street Sports Centre</b> 54 Bridge Street, Picton NSW 2571 Ph: 0435 926 797 Fb: <a href="https://www.facebook.com/bridgestreetsportscentre">https://www.facebook.com/bridgestreetsportscentre</a></p>
	<p><b>Picton Magpies Senior Rugby League Club Victoria Park</b> 157-187 Menangle Street, Picton NSW 2571 E: <a href="mailto:pictonmagpies@gmail.com">pictonmagpies@gmail.com</a> Fb: <a href="https://www.facebook.com/PictonMagpies">https://www.facebook.com/PictonMagpies</a></p>
	<p><b>Picton Magpies Junior Rugby League Club</b> Victoria Park, 157-187 Menangle Street, Picton NSW 2571 Ph: 0401 426 121 E: <a href="mailto:secretary.pictonmagpies@gmail.com">secretary.pictonmagpies@gmail.com</a> Fb: <a href="https://www.facebook.com/PictonMagpiesJRLFC">https://www.facebook.com/PictonMagpiesJRLFC</a></p>
	<p><b>Picton Netball Club</b> Tahmoor Sports Ground, Thirlmere Way ,Tahmoor, NSW 2573 E: <a href="mailto:picton.netballclub@gmail.com">picton.netballclub@gmail.com</a> Fb: <a href="https://www.facebook.com/pictonnetballclub">https://www.facebook.com/pictonnetballclub</a></p>
	<p><b>Picton Bowling Club</b> 10 Cliffe Street, Picton NSW 2571 Ph: (02) 4677 1578 W: <a href="https://www.pictonbowlingclub.com.au">https://www.pictonbowlingclub.com.au</a></p>
	<p><b>Picton Rangers Football Club (FC)</b> Picton Sports Ground, Fairleys Road Picton NSW 2573 Hume Oval, Downing Street, Picton NSW 2573 Fb: <a href="https://www.facebook.com/pictonrangersfootballclub/">https://www.facebook.com/pictonrangersfootballclub/</a> W: <a href="https://pictonrangersfc.com.au">https://pictonrangersfc.com.au</a></p>
	<p><b>Picton Swimming Club</b> Wollondilly Leisure Centre, 434 Argyle Street, Picton NSW 2571 Ph: 0407 219 045 E: <a href="mailto:pictonswimclub@gmail.com">pictonswimclub@gmail.com</a> Fb: <a href="https://www.facebook.com/Picton-Swimming-Club-169110889817324/">https://www.facebook.com/Picton-Swimming-Club-169110889817324/</a></p>
	<p><b>Southwest Oztag Club</b> Picton Sports Ground, 15 Fairleys Road, Picton NSW 2571 Ph: 0449 505 398 Fb: <a href="https://www.facebook.com/southwestoztag/">https://www.facebook.com/southwestoztag/</a> W: <a href="http://www.southwestoztag.com.au/">http://www.southwestoztag.com.au/</a></p>

SPORTS ASSOCIATIONS CONTINUED	
Area	Information
Picton	<p><b>St Anthony's Netball Club</b> E: <a href="mailto:netballnsw@netballnsw.com">netballnsw@netballnsw.com</a> / <a href="mailto:saintsncregistrar@gmail.com">saintsncregistrar@gmail.com</a> Fb: <a href="https://www.facebook.com/Saint-Anthonys-Netball-Club-183587294994143">https://www.facebook.com/Saint-Anthonys-Netball-Club-183587294994143</a></p>
	<p><b>Wollondilly Leisure Centre</b> 434 Argyle Street, Picton NSW 2571 Ph: (02) 4677 1251 E: <a href="mailto:picton@bluefit.com.au">picton@bluefit.com.au</a></p>
	<p><b>Wollondilly Razorbacks (Basketball)</b> E: <a href="mailto:wollondillyrazorbacks@gmail.com">wollondillyrazorbacks@gmail.com</a> Fb: <a href="https://www.facebook.com/wollondillybasketball/?fref=ts">https://www.facebook.com/wollondillybasketball/?fref=ts</a> W: <a href="http://www.wollondillyrazorbacks.com">www.wollondillyrazorbacks.com</a></p>
Mowbray Park	NIL
Maldon	NIL

PRIVATE ANIMAL BOARDING FACILITIES	
Area	Information
Picton	<p><b>Wellington Park Equestrian</b> 45 Rays Lane, Picton NSW 2571 Ph: 0414 994 400 E: <a href="mailto:georgie@glenfieldwaste.com">georgie@glenfieldwaste.com</a> Fb: <a href="https://www.facebook.com/wellingtonparkequestrian">https://www.facebook.com/wellingtonparkequestrian</a> W: <a href="https://wellingtonparkequestrian.com.au">https://wellingtonparkequestrian.com.au</a></p>
Mowbray Park	NIL
Maldon	NIL

ONLINE FACEBOOK COMMUNITY FORUMS & PAGES		
Area	Information	
All Areas	<p><b>Macarthur-Wollondilly Community Noticeboard</b> Fb: <a href="https://www.facebook.com/groups/1653921468167893/">https://www.facebook.com/groups/1653921468167893/</a></p> <p><b>Mayor Matt Gould</b> Fb: <a href="https://www.facebook.com/CrMattGould">https://www.facebook.com/CrMattGould</a></p> <p><b>Picton, Camden and surrounding suburbs Community Page</b> Fb: <a href="https://www.facebook.com/groups/861602960581170">https://www.facebook.com/groups/861602960581170</a></p> <p><b>Picton Wollondilly and Macarthur Community Noticeboard</b> Fb: <a href="https://www.facebook.com/groups/745054278934576/">https://www.facebook.com/groups/745054278934576/</a></p> <p><b>What's Happening in Wollondilly</b> Fb: <a href="https://www.facebook.com/groups/2853710421546044">https://www.facebook.com/groups/2853710421546044</a></p> <p><b>Wollondilly Living</b> Fb: <a href="https://www.facebook.com/groups/wollondillyliving/about/">https://www.facebook.com/groups/wollondillyliving/about/</a></p> <p><b>Wollondilly Community Living</b> Fb: <a href="https://www.facebook.com/groups/973623299396093/">https://www.facebook.com/groups/973623299396093/</a></p> <p><b>Wollondilly Incidents &amp; Alerts</b> Fb: <a href="https://www.facebook.com/groups/wollondilly/">https://www.facebook.com/groups/wollondilly/</a></p> <p><b>Wollondilly Community Noticeboard</b> Fb: <a href="https://www.facebook.com/groups/945217202158492/">https://www.facebook.com/groups/945217202158492/</a></p> <p><b>Wollondilly Life</b> Fb: <a href="https://www.facebook.com/groups/200220494140376/">https://www.facebook.com/groups/200220494140376/</a></p> <p><b>Wollondilly Shire Council</b> Fb: <a href="https://www.facebook.com/wollondilly">https://www.facebook.com/wollondilly</a></p>	
	Picton	<p><b>Camden Narellan Mt Annan Elderslie Picton &amp; Surrounds Community Noticeboard</b> Fb: <a href="https://www.facebook.com/groups/camdenandsurroundslga">https://www.facebook.com/groups/camdenandsurroundslga</a></p> <p><b>Picton, Camden and Surrounding Areas Community Page</b> Fb: <a href="https://www.facebook.com/groups/861602960581170">https://www.facebook.com/groups/861602960581170</a></p> <p><b>Thirlmere Picton Community Group</b> Fb: <a href="https://www.facebook.com/groups/575604505898058">https://www.facebook.com/groups/575604505898058</a></p>

COUNCIL ASSETS		
Area	Information	
Picton	<p><b>Picton Sports Ground</b> 15 Fairleys Road, Picton NSW 2571 Ph: (02) 4677 1100 E: <a href="mailto:council@wollondilly.nsw.gov.au">council@wollondilly.nsw.gov.au</a></p> <p><b>The Robin Davies Wollondilly Community Nursery</b> Wonger Road, Picton NSW 2571 Ph: (02) 4677 1100 E: <a href="mailto:nusery@wollondilly.nsw.gov.au">nusery@wollondilly.nsw.gov.au</a></p> <p><b>The Wollondilly Shire Hall</b> 44-60 Menangle Street, Picton NSW 2571 Ph: (02) 4677 1100 E: <a href="mailto:council@wollondilly.nsw.gov.au">council@wollondilly.nsw.gov.au</a></p> <p><b>Wollondilly Library</b> 42 Menangle Street, Picton NSW 2571 Ph: (02) 4677 8300 E: <a href="mailto:library@wollondilly.nsw.gov.au">library@wollondilly.nsw.gov.au</a> Fb: <a href="https://www.facebook.com/WollondillyLibrary">https://www.facebook.com/WollondillyLibrary</a> W: <a href="http://www.library.wollondilly.nsw.gov.au/home">http://www.library.wollondilly.nsw.gov.au/home</a></p> <p><b>Wollondilly Shire Council</b> Frank McKay Building, 62-64 Menangle Street, Picton NSW 2571 Ph: (02) 4677 1100 E: <a href="mailto:council@wollondilly.nsw.gov.au">council@wollondilly.nsw.gov.au</a> Fb: <a href="https://www.facebook.com/wollondilly">https://www.facebook.com/wollondilly</a> W: <a href="https://www.wollondilly.nsw.gov.au">https://www.wollondilly.nsw.gov.au</a></p> <p><b>Hume Oval</b> 20 Downing Street, PICTON, NSW, 257 Ph: (02) 4677 1100 E: <a href="mailto:council@wollondilly.nsw.gov.au">council@wollondilly.nsw.gov.au</a></p>	
	Mowbray Park	NIL
	Maldon	NIL

PROMINENT BUSINESSES	
Area	Information
Picton	<p><b>Australia Post – Picton LPO</b> Picton Mall, shop 9/9 Margaret Street, Picton NSW 2571 Ph: (02) 4677 1423</p> <p><b>Coles Supermarket</b> Picton Mall, 9-13 Margaret Street, Picton NSW 2571 Ph: (02) 4677 0655</p> <p><b>Kmart Picton – K Hub</b> Picton Mall, Shop 3/9-13 Margaret Street, Picton NSW 2571 Ph: (02) 4677 4800</p> <p><b>Khan’s Super IGA Picton</b> 100 Argyle Street, Picton NSW 2571 Ph: (02) 4677 2922 Fb: <a href="https://www.facebook.com/KhansSUPIGAPicton">https://www.facebook.com/KhansSUPIGAPicton</a></p>
	<p><b>Mowbray Park Farmstay – Possible animal evacuation</b> 745 Barkers Lodge Road, Mowbray Park NSW 2571 Ph: (02) 4680 9243 E: <a href="mailto:mowbray@farmstayholidays.com.au">mowbray@farmstayholidays.com.au</a> W: <a href="https://www.farmstayholidays.com.au">https://www.farmstayholidays.com.au</a></p> <p><b>Mowbray Park Produce</b> 155 Mowbray Park road, Mowbray Park NSW 2571 Ph: 0457 138 867</p>
	<p><b>Picton Karting Track and Mini Golf</b> 200 Picton Road, Maldon NSW 2571 Ph: (02) 4677 3330 W: <a href="https://pkt.net.au">https://pkt.net.au</a></p> <p><b>Boral (Maldon Operations)</b> Maldon Bridge Road, Maldon NSW 2571 W: <a href="https://www.boral.com.au/contact/general">https://www.boral.com.au/contact/general</a></p> <p><b>Boral Concrete Maldon</b> 100 Wilton Park Road, Maldon NSW 2571 Ph: (02) 46771678 W: <a href="https://www.boral.com.au/contact/general">https://www.boral.com.au/contact/general</a></p> <p><b>Allied Pinnacle Picton</b> 330 Picton Road, Maldon NSW 2571 Ph: 1300 369 869 W: <a href="https://alliedpinnacle.com">https://alliedpinnacle.com</a></p>

COMMUNITY ASSOCIATIONS		
Area	Information	
Picton	<p><b>Picton District Branch Country Women’s Association</b> 34 Jarvisfield Road, Picton NW 2571 Ph: 0413 038 662 E: <a href="mailto:myrtleandme@hotmail.com">myrtleandme@hotmail.com</a> Fb: <a href="https://www.facebook.com/PictonCWA/">https://www.facebook.com/PictonCWA/</a></p> <p><b>Picton Parkrun</b> Cliffe Street, Picton NSW 2571 E: <a href="mailto:picton@parkrun.com">picton@parkrun.com</a> Fb: <a href="https://www.facebook.com/pictonparkrun">https://www.facebook.com/pictonparkrun</a></p> <p><b>Picton District Historical and Family History Society Inc</b> Wollondilly Library, 42 Menangle Street, Picton NSW 2571 E: <a href="mailto:pictonheritage@outlook.com">pictonheritage@outlook.com</a> Fb: <a href="https://www.facebook.com/Picton-and-District-Historical-and-Family-History-Society-Inc-Australia-878976525498739">https://www.facebook.com/Picton-and-District-Historical-and-Family-History-Society-Inc-Australia-878976525498739</a></p> <p><b>IC Care</b> 65 Menangle ST, Picton 2571 Ph: (02) 4677 2524 E: <a href="mailto:enquires@wsacci.org.au">enquires@wsacci.org.au</a></p> <p><b>One Stop Community Assistance</b> 9 Magnolia Avenue, Picton 2571 Ph: 0413 003 601</p> <p><b>Rotary Club of Picton NSW</b> Ph: 0484 132 060 E: <a href="mailto:president@pictonrotary.com.au">president@pictonrotary.com.au</a> Fb: <a href="https://www.facebook.com/PictonNSWRotary">https://www.facebook.com/PictonNSWRotary</a></p>	
	Mowbray Park	NIL
	Maldon	NIL

NEIGHBOURHOOD SAFER SPACES	
Area	Information
Picton	<p><b>Picton High School</b> 480 Argyle Street, Picton</p> <p><b>Picton Bowling Club</b> 55-56 Argyle Street, Picton Carpark between Coles &amp; Council Admin Building Margaret Street, Picton</p>
Mowbray Park	NIL
Maldon	NIL





**Wollondilly**  
Shire Council

[www.wollondilly.nsw.gov.au](http://www.wollondilly.nsw.gov.au)