



# ASSET MAPPING & COMMUNITY PROFILES PROJECT

TAHMOOR

2023

---



# Acknowledgement<sup>\*</sup>

Wollondilly Shire Council acknowledges the traditional custodians of the land in Wollondilly, the Dharawal and Gundungurra peoples.

We acknowledge the living culture and spiritual connections to the land for the Dharawal and Gundungurra people and all Aboriginal Nation Groups that may have connections to the area; and that Wollondilly is remarkably placed as the intersection of many tribal lands.

We recognise the traditional Custodians who have occupied and cared for this Country over countless generations and celebrate their continuing contributions to the Shire.

We also acknowledge and remember the Dharawal and Gundungurra peoples who were killed in the Appin Massacre on 17 April 1816.

*\*We acknowledge our continuing collaboration with the Tharawal Local Aboriginal Land Council*

# CONTENTS

<b>Acknowledgement of Country</b>	<b>3</b>
<b>About Wollondilly Shire</b>	<b>7</b>
<b>Population Data</b>	<b>9</b>
<b>Wollondilly Shire Map</b>	<b>10</b>
<b>Emergency Services</b>	<b>13</b>
<b>Council Assets</b>	<b>13</b>
<b>Public Transport</b>	<b>14</b>
<b>Medical Facilities &amp; Pharmacies</b>	<b>14</b>
<b>Neighbourhood Safer Spaces</b>	<b>15</b>
<b>About Silverdale, Wallacia &amp; Warragamba</b>	<b>16</b>
<b>Population Data</b>	<b>19</b>
<b>Area Map</b>	<b>20</b>
<b>Areas &amp; Information</b>	<b>22</b>
<b>Disaster Services</b>	<b>24</b>
<b>Schools</b>	<b>24</b>
<b>Childcare Services &amp; Preschools</b>	<b>25</b>
<b>Community Associations</b>	<b>26</b>
<b>Private Animal Boarding Facilities</b>	<b>26</b>
<b>Neighbourhood Safer Spaces</b>	<b>26</b>
<b>Sports Associations</b>	<b>27</b>
<b>Council Assets</b>	<b>27</b>
<b>Prominent Businesses</b>	<b>29</b>
<b>Online Facebook Community Forums &amp; Pages</b>	<b>29</b>

A map of Wollondilly Shire with various towns labeled. The map is overlaid on a green-to-teal gradient background. The towns labeled include: WALLACTIA, WARRAGAMBA, SILVERDALE, WEROMBI, THERESA PARK, ORANGEVILLE, BROWNLOW HILL, NATTAI, OAKDALE, GLENMORE, THE OAKS, MOUNT HUNTER, CAWDOR, CAMDEN PARK, MENANGLE, RAZORBACK, MOWBRAY PARK, PICTON, DOUGLAS PARK, LAKESLAND, THIRLMERE, MALDON, APPIN, THAHMOOR, COURIDJAH, BUXTON, PHEASANTS NEST, WILTON, BARGO, and YANDERRA.

# WOLLONDILLY SHIRE

## WOLLONDILLY

The Wollondilly Shire Local Government Area (LGA) has many unique towns and villages, ranging from Warragamba in the north to Yanderra in the south. The Shire is a large rural area that offers beautiful landscapes and has a strong sense of community spirit.

In 2019/20, the community of Wollondilly was significantly impacted by the Green Wattle Creek bushfire, resulting in the loss of private homes, wildlife, facilities, and hectares of National Park bushland. Following this tragic event, the community faced additional challenges with storm events and flood damage, exacerbating the strain on the community.

In consultation with residents, response agencies, and key stakeholders, Wollondilly Shire Council developed the Activate Wollondilly 2021: Long-Term Recovery and Resilience Plan. This plan aims to assist the community through recovery and resilience building, and it identifies key strategies to support and guide the recovery process.

Asset Mapping was identified as a key strategy to support the implementation of the plan. This document is designed to highlight and inform the community about the facilities and groups available in their local area that can provide help in times of need.

**Please Note:**

- It is the responsibility of the RFS to identify and communicate evacuation points accordingly during an emergency. These points are often Community Assets and Council will work with the RFS to support accurate communication to the community.
- Evacuation Routes can change during an emergency. It is important to seek current RFS information before taking action.

# Population Data

## WOLLONDILLY



A population of  
**54,176** people  
in total

**27,032**  
Male (50.1%)



**26,931**  
Female (49.9%)



**2,364**  
Indigenous (4.4%)



**5,552**  
Seniors (70+ Years)  
(10.3%)



**3,165**  
Employed  
(97.6%)

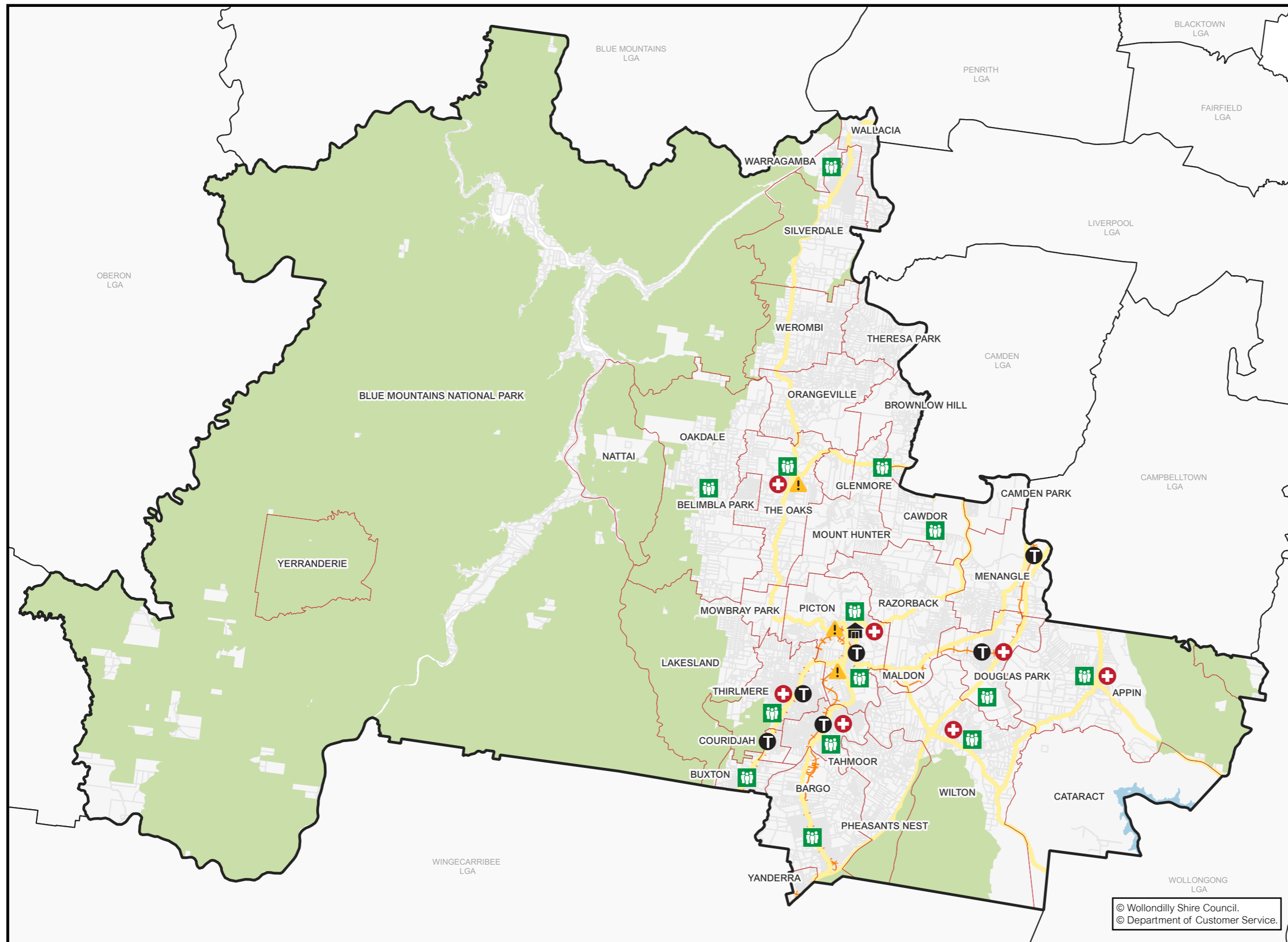


**5,992**  
Born Overseas  
(11.1%)



**322**  
Non-English  
Speaking (0.6%)

# WOLLONDILLY SHIRE MAP



**Legend**

- Disaster/Emergency Services
- Council Assets
- Public Transport
- Medical Facilities & Pharmacies
- Neighbourhood Safer Spaces

© Wollondilly Shire Council.  
© Department of Customer Service.



EMERGENCY SERVICES	
Area	Information
Wollondilly	<p><b>Rural Fire Service - Bushfire Information Line</b> - Ph: 1800 679 737</p> <p><b>Rural Fire Service Wollondilly District Office</b> - Ph: (02) 4677 7000</p> <p><b>Wollondilly State Emergency Service (SES)</b>            65 Bridge Street, Picton, 2571            Ph: 132 500            Fb: <a href="https://www.facebook.com/NSWSESWDY">https://www.facebook.com/NSWSESWDY</a></p> <p><b>Picton Police Station</b>            86 Argyle St, Picton NSW 2571            Ph: (02) 4677 8999</p> <p><b>The Oaks Police Station</b>            57 Merlin St, The Oaks NSW 2570            Ph: (02) 4657 1142</p> <p><b>Picton Ambulance Station</b>            79/81 Old Hume Hwy, Picton NSW 2571</p> <p><b>Camden PAC Office</b>            278 Camden Valley Way            NARELLAN 2567            Ph: (02) 4632 4499</p> <p><b>Warragamba Police Station</b>            4 Third St, Warragamba NSW 2752            Ph: (02) 4774 1105</p>

COUNCIL ASSETS	
Area	Information
Wollondilly	<p><b>The Wollondilly Shire Hall</b>            44-60 Menangle Street, Picton NSW 2571            Ph: (02) 4677 1100            E: <a href="mailto:council@wollondilly.nsw.gov.au">council@wollondilly.nsw.gov.au</a></p> <p><b>Wollondilly Library</b>            42 Menangle Street, Picton NSW 2571            Ph: (02) 4677 8300            E: <a href="mailto:library@wollondilly.nsw.gov.au">library@wollondilly.nsw.gov.au</a>            Fb: <a href="https://www.facebook.com/WollondillyLibrary">https://www.facebook.com/WollondillyLibrary</a>            W: <a href="http://www.library.wollondilly.nsw.gov.au/home">http://www.library.wollondilly.nsw.gov.au/home</a></p> <p><b>Wollondilly Shire Council</b>            Frank McKay Building, 62-64 Menangle Street, Picton NSW 2571            Ph: (02) 4677 1100            E: <a href="mailto:council@wollondilly.nsw.gov.au">council@wollondilly.nsw.gov.au</a>            Fb: <a href="https://www.facebook.com/wollondilly">https://www.facebook.com/wollondilly</a>            W: <a href="https://www.wollondilly.nsw.gov.au">https://www.wollondilly.nsw.gov.au</a></p>

PUBLIC TRANSPORT	
Area	Information
Wollondilly	<b>Train Stations:</b> Menangle Park Douglas Park Picton Thirlmere Tahmoor Bargo Yerrinbool

MEDICAL FACILITIES & PHARMACIES	
Area	Information
Wollondilly	<b>Wollondilly Medical Centre</b> Centre, Shop 16/117 Remembrance Driveway, Tahmoor NSW 2573 Ph: (02) 4607 2905 W: hotdoc.com.au  <b>Wollondilly Specialist Medical Centre</b> Shop 15, Tahmoor Shopping Village (next to Foodworks), Cnr Remembrance Dr &, Bronzewing St, Tahmoor NSW 2573 Ph: (02) 4683 0070  <b>Thirlmere Pharmacy</b> 29 Oak St, Thirlmere Ph: 4683 2866  <b>Wilton Pharmacy</b> 1 Greenbridge Drive, Wilton Ph: (02) 4630 9333  <b>Priceline Pharmacy Tahmoor</b> Shop 12 Tahmoor Town Centre, 117 Remembrance Driveway, Tahmoor NSW 2573 Ph: (02) 4681 8713  <b>Picton Discount Drug Store</b> Shop T25-T27/9 Margaret St, Picton NSW 2571 Ph: 4677 1294  <b>Pharmacy 4 Less Tahmoor</b> Tahmoor Shopping Village 5&6, 161-173 Remembrance Driveway, Tahmoor NSW 2573 Ph: (02) 4681 0224  <b>The Oaks Village Pharmacy</b> 67 John St, The Oaks NSW 2570 Ph: (02) 4657 1387  <b>Appin Compounding Pharmacy</b> Shop 2/75 Appin Rd, Appin NSW 2560 Ph: (02) 4631 1488  <b>Douglas Park Pharmacy</b> Shop 2A/147 Camden Rd, Douglas Park NSW 2569 Ph: (02) 4632 8554

NEIGHBOURHOOD SAFER SPACES	
Area	Information
Wollondilly	<b>St Mary's Towers</b> 415 Douglas Park Drive, Douglas Park  <b>Wilton Community Centre</b> Broughton Street, Wilton  <b>Main Street Appin</b> Appin Road, Appin  <b>Land adjacent to Bargo Hotel</b> 225-227 Great Southern Road, Bargo  <b>Bargo Shops</b> Remembrance Drive, Bargo  <b>Hall within Bargo Showground</b> Radnor Road, Bargo  <b>Buxton Fire Shed</b> West Parade, Buxton  <b>The Oaks Public School</b> John Street, The Oaks  <b>The Oaks Hall</b> Russell Street, The Oaks  <b>Warragamba Public School Hall</b> Weir Road, Warragamba  <b>Oakdale Shops</b> Burragorang Road, Oakdale  <b>Oakdale Community Hall</b> Cnr Egans Road and Burragorang Road, Oakdale  <b>Mt Hunter Community Hall</b> Corner of Burragorang Rd and Clyde Place, Mt Hunter  <b>Cawdor Public School</b> 685 Cawdor Road, Cawdor  <b>Picton High School</b> 480 Argyle Street, Picton  <b>Picton Bowling Club</b> 55-56 Argyle Street, Picton  <b>Carpark between Coles &amp; Council Admin Building</b> Margaret Street, Picton  <b>Tahmoor Town Centre Carpark</b> Cnr of Thirlmere Way and Remembrance Drive, Tahmoor  <b>Wollondilly Youth Hub/ Community Centre</b> Harper Close, Tahmoor  <b>Thirlmere Public School</b> Oaks Street, Thirlmere  <b>Thirlmere Memorial Park</b> Oaks Street, Thirlmere





# TAHMOOR

Tahmoor is located south of Picton. It is one of Wollondilly's largest towns and is home to a range of community, health and essential services. Amongst other assets it offers a large modern sporting complex, links to public transport and a variety of community support services.

*Information contained in this document is derived from Wollondilly Shire Council's Community Strengths and Resources Questionnaire 2023 and is a documentation of community thoughts and opinions. Statistical data is sourced from id.community and is supported by ABS Census data 2021. <https://profile.id.com.au/wollondilly/about?WebID=220>*

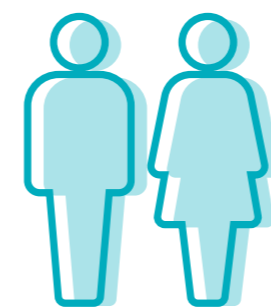


# Population Data

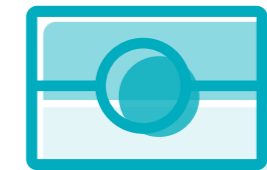
## TAHMOOR



A population of **5,484** people in total



**2,670**  
Male (48.7%)  
**2,813**  
Female (51.3%)



**213**  
Indigenous  
(3.9%)



**818**  
Seniors  
(>70 Years)  
(15%)

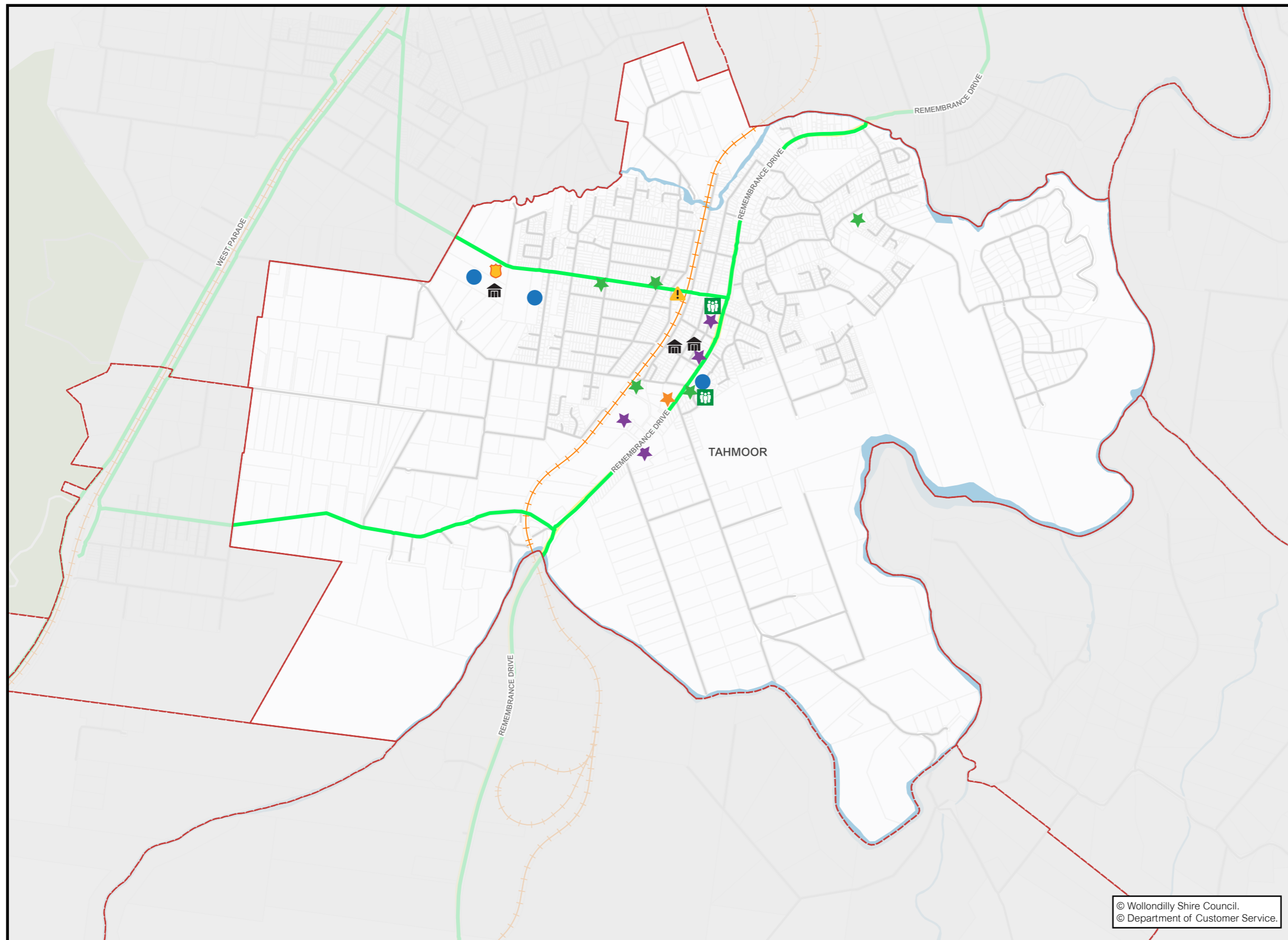


**580**  
Born Overseas  
(10.6%)



**38**  
Non-English  
Speaking  
(0.7%)

# AREA MAP



**Legend**

- Childcare Centres & Preschools
- Community Associations
- Council Assets
- Disaster/Emergency Services
- Private Animal Boarding Facilities
- Prominent Businesses
- Schools
- Sports Associations
- Evacuation Route
- Neighbourhood Safer Spaces

© Wollondilly Shire Council.  
© Department of Customer Service.

# AREAS & INFORMATION

DISASTER SERVICES	
Area	Information
Tahmoor	<p><b>Tahmoor Rural Fire Brigade</b>            6 Pitt Street, Tahmoor NSW 2573            Ph: (02) 4683 1159            E: radford250@gmail.com            Fb: <a href="https://www.facebook.com/Tahmoorrrfs">https://www.facebook.com/Tahmoorrrfs</a></p>
	<p><b>Rural Fire Service- Bushfire Information Line</b>            Ph: 1800 679 737</p>
	<p><b>Rural Fire Servicer Wollondilly District Office</b>            Ph: 4677 7000</p>
	<p><b>Wollondilly State Emergency Service (SES)</b>            65 Bridge Street, Picton, 2571            Ph:132 500            Fb: <a href="https://www.facebook.com/NSWSESWDY">https://www.facebook.com/NSWSESWDY</a></p>

SCHOOLS	
Area	Information
Tahmoor	<p><b>Tahmoor Public School</b>            Bronzewing Street, Tahmoor 2573            Ph: (02) 4681 8340            E: tahmoor-p.school@det.nsw.edu.au</p>
	<p><b>Wollondilly Anglican College</b>            3000 Remembrance Driveway, Tahmoor NSW 2573            Ph: (02) 4681 8340            E: enrolments@wac.nsw.edu.au</p>

CHILDCARE SERVICES & PRESCHOOLS	
Area	Information
Tahmoor	<p><b>Katies Kindergarten</b>            50 Thirlmere Way, Tahmoor NSW 2573            Ph: (02) 4683 3900            E: info@katieskindy.com.au</p>
	<p><b>Next Step Child Care</b>            7 Bronzewing Street, Tahmoor NSW 2573            Ph: 0439 966 704            Fb: <a href="https://www.facebook.com/Next-step-childcare-442902823174988">https://www.facebook.com/Next-step-childcare-442902823174988</a></p>
	<p><b>Rainbow Playhouse Preschool</b>            6 Harper Close, Tahmoor NSW 2573            Ph: (02) 4681 8931            E: rainbowplayhouse@bigpond.com            W: <a href="https://www.rainbowplayhousepreschool.com.au">https://www.rainbowplayhousepreschool.com.au</a></p>
	<p><b>Tahmoor Early Learning Centre</b>            33 Castlereagh Street, Tahmoor NSW 2573            Ph: (02) 4681 8646            E: info@tahmoorelc.com.au            W: <a href="http://tahmoorelc.com.au">http://tahmoorelc.com.au</a></p>
	<p><b>Young Academics Early Learning Centre Tahmoor</b>            14-16 Moorland Road, Tahmoor NSW 2573            Ph: 1300 668 993            *** Opening late 2022</p>

COMMUNITY ASSOCIATIONS	
Area	Information
Tahmoor	<p><b>Community Links Wellbeing</b> 6 Harper Close, Tahmoor NSW 2573 Ph: (02) 4683 2776 E: info@communitylinks.org.au Fb: <a href="https://www.facebook.com/Communitylinkswellbeing">https://www.facebook.com/Communitylinkswellbeing</a></p>
	<p><b>Lions Club of Tahmoor Inc</b> 122 Hawthorn Street, Bargo NSW 2574 E: tahmoor.nsw@lions.org.au Fb: <a href="https://www.facebook.com/LionsTahmoor">https://www.facebook.com/LionsTahmoor</a></p>
	<p><b>Tahmoor Uniting Men's Shed Inc</b> 110 Thirlmere Way, Tahmoor NSW 2573 Ph: (02) 4681 8442 / 0707 412 608</p>
	<p><b>Wollondilly Riding for the Disabled</b> Thirlmere Way, Tahmoor NSW 2573 Ph: 0490 122 293 E: wollondilly@rdansw.org.au Fb: <a href="https://www.facebook.com/wollondillyrda/">https://www.facebook.com/wollondillyrda/</a> W: <a href="https://rdansw.org.au">https://rdansw.org.au</a></p>

PRIVATE ANIMAL BOARDING FACILITIES	
Area	Information
Tahmoor	NIL

NEIGHBOURHOOD SAFER SPACES	
Area	Information
Tahmoor	<p><b>Tahmoor Town Centre Carpark</b> Cnr of Thirlmere Way and Remembrance Drive, Tahmoor</p>
	<p><b>Wollondilly Youth Hub/ Community Centre</b> Harper Close, Tahmoor</p>

SPORTS ASSOCIATIONS	
Area	Information
Tahmoor	<p><b>Tahmoor Netball Club</b> Tahmoor Sports Ground, 140 Thirlmere Way, Tahmoor NSW 2573 Fb: <a href="https://www.facebook.com/Tahmoor-Netball-Club-Wildcats-177453298948209">https://www.facebook.com/Tahmoor-Netball-Club-Wildcats-177453298948209</a></p>
	<p><b>Tahmoor Taipans Soccer Club</b> Tahmoor Sports Ground, 140 Thirlmere Way, Tahmoor NSW 2573 Ph: 0434 377 543 E: president@tahmoorsoccerclub.com.au Fb: <a href="https://www.facebook.com/TahmoorTaipans">https://www.facebook.com/TahmoorTaipans</a></p>
	<p><b>Thirlmere Tahmoor SRLFC</b> Thirlmere Sports Ground, 22-42 Oaks Street Thirlmere NSW 2572 Fb: <a href="https://www.facebook.com/people/Thirlmere-Tahmoor-SRLFC/100063654695142/">https://www.facebook.com/people/Thirlmere-Tahmoor-SRLFC/100063654695142/</a></p>
	<p><b>Thirlmere Tahmoor JRL</b> Thirlmere Sports Ground, 22-42 Oaks Street Thirlmere NSW 2572 E: thirlmereroosters@gmail.com Fb: <a href="https://www.facebook.com/TTJRL/">https://www.facebook.com/TTJRL/</a></p>
	<p><b>Wollondilly Pony Club</b> Thirlmere Way, Tahmoor NSW 2573 Ph: 0403 199 402 E: wollondillyponyclub01@gmail.com Fb: <a href="https://www.facebook.com/groups/161835183866087/about/">https://www.facebook.com/groups/161835183866087/about/</a></p>

COUNCIL ASSETS	
Area	Information
Tahmoor	<p><b>Tahmoor CWA Hall</b> 98 York Street, Tahmoor NSW 2573 Ph: (02) 4677 1100 E: council@wollondilly.nsw.gov.au</p>
	<p><b>Tahmoor Tennis Courts</b> 75 York Street, TAHMOOR, NSW, 2573 Ph: (02) 4677 1100 E: council@wollondilly.nsw.gov.au</p>
	<p><b>Tahmoor Sportsground</b> Tahmoor Sportsground Amenities Block 140 Thirlmere Way, TAHMOOR, NSW, 2573 Ph: (02) 4677 1100 E: council@wollondilly.nsw.gov.au</p>



Tahmoor Main Street

PROMINENT BUSINESSES

Area	Information
<b>Tahmoor</b>	<p><b>Aldi - Tahmoor</b> 153-159 Remembrance Driveway, Tahmoor NSW 2573 Ph: 132 534</p> <p><b>Priceline Pharmacy Tahmoor</b> Shop 12 Tahmoor Town Centre, 117 Remembrance Driveway, Tahmoor NSW 2573 Ph: (02) 4681 8713</p> <p><b>Pharmacy 4 Less Tahmoor</b> Tahmoor Shopping Village 5&amp;6, 161-173 Remembrance Driveway, Tahmoor NSW 2573 Ph: (02) 4681 0224</p> <p><b>Australia Post – Tahmoor LPO</b> 2/117 Remembrance Drive, Tahmoor NSW 2573 Ph: (02) 4603 2225</p> <p><b>McDonalds – Tahmoor</b> 2710 Remembrance Drive, Tahmoor NSW 2573 Ph: (02)4683 4300</p> <p><b>Tahmoor Inn Hotel/Motel</b> 2715 Remembrance Drive, Tahmoor NSW 2573 Ph: (02) 4681 8505 E: tmoorinn@bigpond.net.au Fb: <a href="https://www.facebook.com/tahmoorinn">https://www.facebook.com/tahmoorinn</a> W: <a href="http://www.tahmoorinn.com.au">http://www.tahmoorinn.com.au</a></p> <p><b>Woolworths – Tahmoor</b> Tahmoor Town Centre, Cnr Remembrance Drive and Thirlmere Way, Tahmoor NSW 2573 Ph: (02) 4677 6200</p> <p><b>Picton Chamber of Commerce (incl surrounding suburbs)</b> W: <a href="https://www.facebook.com/PictonChamberofCommerce">https://www.facebook.com/PictonChamberofCommerce</a></p> <p><b>Wollondilly Local Business Directory</b> W: <a href="https://www.facebook.com/groups/1305777129542823/">https://www.facebook.com/groups/1305777129542823/</a></p>

ONLINE FACEBOOK COMMUNITY FORUMS & PAGES

Area	Information
<b>Tahmoor</b>	<p><b>Tahmoor Community Group</b> Fb: <a href="https://www.facebook.com/groups/771833027525353">https://www.facebook.com/groups/771833027525353</a></p>



**Wollondilly**  
Shire Council

[www.wollondilly.nsw.gov.au](http://www.wollondilly.nsw.gov.au)