

**Wollondilly
Local Emergency
Management Plan
October 2023**



Part 1 – Administration

Authority

The Wollondilly Local Emergency Management Plan (EMPLAN) has been prepared by the Wollondilly Local Emergency Management Committee in compliance with the State Emergency & Rescue Management Act 1989.

APPROVED

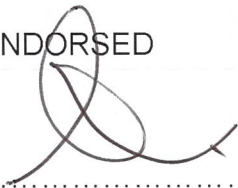


Chair

Wollondilly Local Emergency Management Committee

Dated: 1.11.2023

ENDORSED



Chair

South West Metropolitan Regional Emergency Management Committee

Dated: 30/11/23

Amendments

Proposals for amendment or addition to the contents of the Wollondilly Local Emergency Management Plan (EMPLAN) are to be forward to:

Local Emergency Management Officer, Wollondilly

Email: lemo@wollondilly.nsw.gov.au

Version History

Version	Comment	Authorised
1.0	Total Rewrite by LEMO	REOCON August 2016
2.0	Review & Amended: Several small changes undertaken within the document included updating Annexures B, D, G and F and adding the version control table.	REOCON August 2020
2.1	Amended in accordance with REMO's Recommendations: Several small changes undertaken within the document included amending Parts 1, 2 & 3.	REOCON November 2020
3.0	Draft Review and Amendments – August 2023	
3.1	Amended with Feedback from REMO	

Contents

Part 1 – Administration	2
Authority	2
Amendments	2
Version History	3
Contents	4
Purpose	5
Objectives	5
Scope	5
Principles	6
Test and Review Process	6
Part 2 – Community Context.....	7
Annexure A – Community Profile	7
General.....	7
Landform and Topography	8
Climate	8
Land Use	10
Population and People	11
Transport Routes and Facilities	17
Key Roads Across the Shire.....	19
Economy and Industry	23
Annexure B – Hazards and Risks Summary	26
Annexure C – Local Sub Plans, Supporting Plans and Policies	30
Part 3 – Restricted Operational Information.....	31
Annexure D – Community Assets	31
Key Resources and Locations	31
Key Infrastructure	40
Major Hazard Facilities (MHFs)	44
(Emergency Response Plans)	44
Annexure E – Vulnerable Facilities List.....	45
Annexure F – Consequence Management Guides	53
Appendix G – Checklist of Vulnerabilities for Emergency Response	54

Purpose

Details arrangements for, prevention of, preparation for, response to and recovery from emergencies within the Local Government Area(s) covered by this plan.

It encompasses arrangements for:

- emergencies controlled by combat agencies;
- emergencies controlled by combat agencies and supported by the Local Emergency Operations Controller (LEOCON);
- emergency operations for which there is no combat agency; and
- circumstances where a combat agency has passed control to the LEOCON.

Objectives

The objectives of this plan are to:

- define participating organisation and Functional Area roles and responsibilities in preparation for, response to and recovery from emergencies;
- set out the control, co-ordination and liaison arrangements at the Local level;
- detail activation and alerting arrangements for involved agencies; and
- detail arrangements for the acquisition and co-ordination of resources.

Scope

The plan describes the arrangements at Local level to prevent, prepare for, respond to and recover from emergencies and also provides policy direction for the preparation of Sub Plans and Supporting Plans:

- Arrangements detailed in this plan are based on the assumption that the resources upon which the plan relies are available when required; and
- The effectiveness of arrangements detailed in this plan are dependent upon all involved agencies preparing, testing and maintaining appropriate internal instructions, and/or standing operating procedures.

Principles

The following principles are applied in this plan:

- a) The Emergency Risk Management (ERM) process is to be used as the basis for emergency planning in New South Wales. This methodical approach to the planning process is to be applied by Emergency Management Committees at all levels.
- b) Responsibility for preparation, response and recovery rests initially at Local level. If Local agencies and available resources are not sufficient they are augmented by those at Regional level.
- c) Control of emergency response and recovery operations is conducted at the lowest effective level.
- d) Agencies may deploy their own resources from their own service from outside the affected Local area or Region if they are needed.
- e) The Emergency Operations Controller (EOCON) is responsible, when requested by a combat agency, to co-ordinate the provision of resources support. EOCONs would not normally assume control from a combat agency unless the situation can no longer be contained. Where necessary, this should only be done after consultation with the Regional Emergency Operations Controller (REOCON) and agreement of the combat agency and the appropriate level of control.
- f) Emergency preparation, response and recovery operations should be conducted with all agencies carrying out their normal functions wherever possible.
- g) Prevention measures remain the responsibility of authorities/agencies charged by statute with the responsibility.

Test and Review Process

The Wollondilly Local Emergency Management Committee (LEMC) will review this Plan every three (3) years, or following any:

- activation of the Plan in response to an emergency;
- legislative changes affecting the Plan; and
- exercises conducted to test all or part of the Plan.

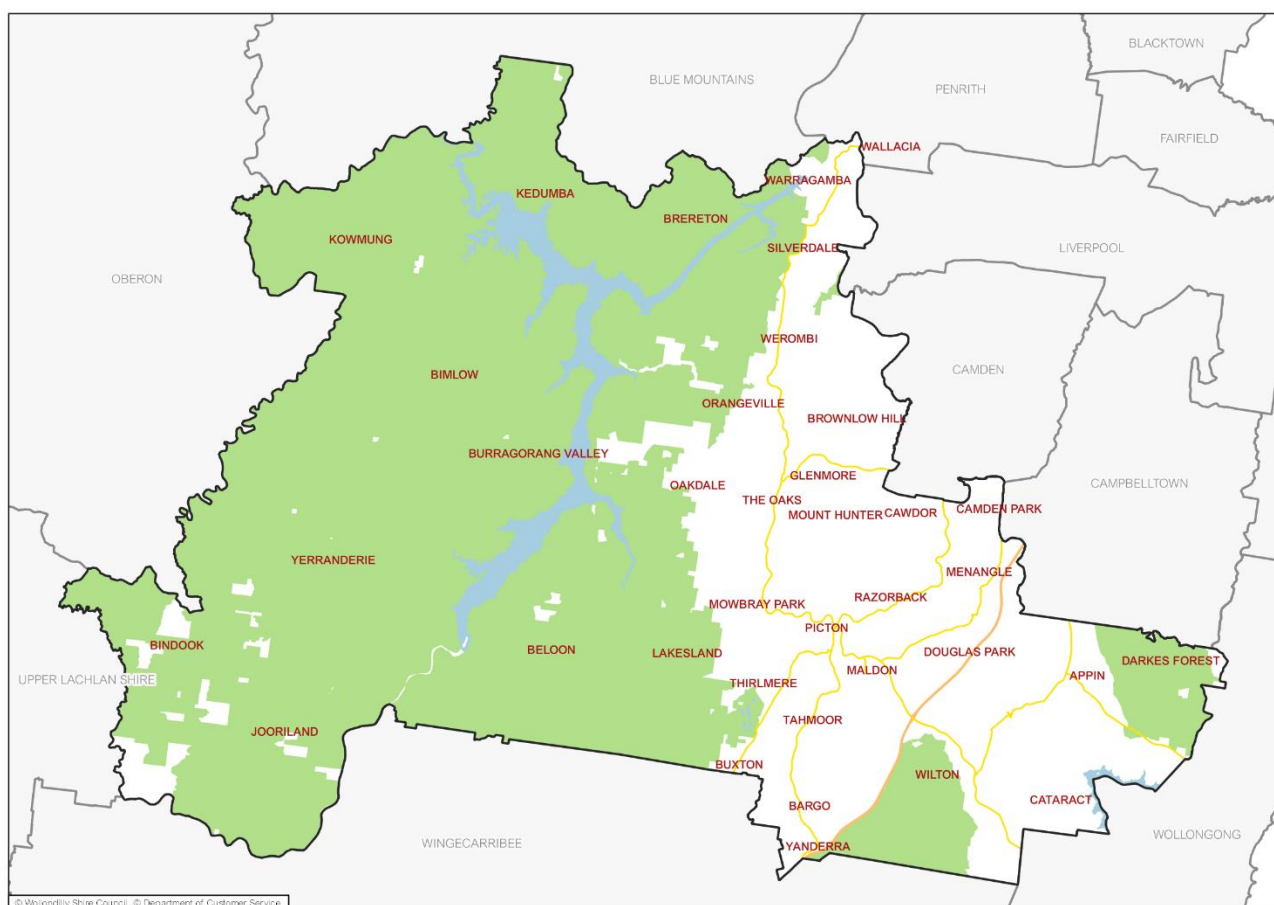
Part 2 – Community Context

Annexure A – Community Profile

General

Wollondilly, on the south western outskirts of Sydney and at the foothills of the Southern Highlands, includes rural areas, including bushland, National Park and residential areas. Its 2,560km² stretch from Yanderra in the south, Appin and Menangle in the east, Warragamba in the north with the Nattai wilderness, Yerranderie and Burragorang Valley to the west. The key population centres are Picton, Tahmoor, Thirlmere, Camden Park, Silverdale, Appin and Wilton.

Wollondilly Shire Council Local Government Area



Landform and Topography

The Wollondilly Shire hosts a diverse range of environmental assets and, outside of its limited urban areas, 90% of the LGA consists of national park, bushland, water catchment or rural land. Topographically, altitude and gradient generally increase moving from flat plains in the east to the ranges and gorges in the west, where the LGA borders the Blue Mountains.

The LGA contains three major catchments being the Wollondilly River Catchment, Upper Nepean River Catchment and the Upper Georges River Catchment. The Wollondilly River Catchment is of particular importance given that it forms part of the Warragamba Dam Catchment, which is a major source of Sydney's drinking water supply.

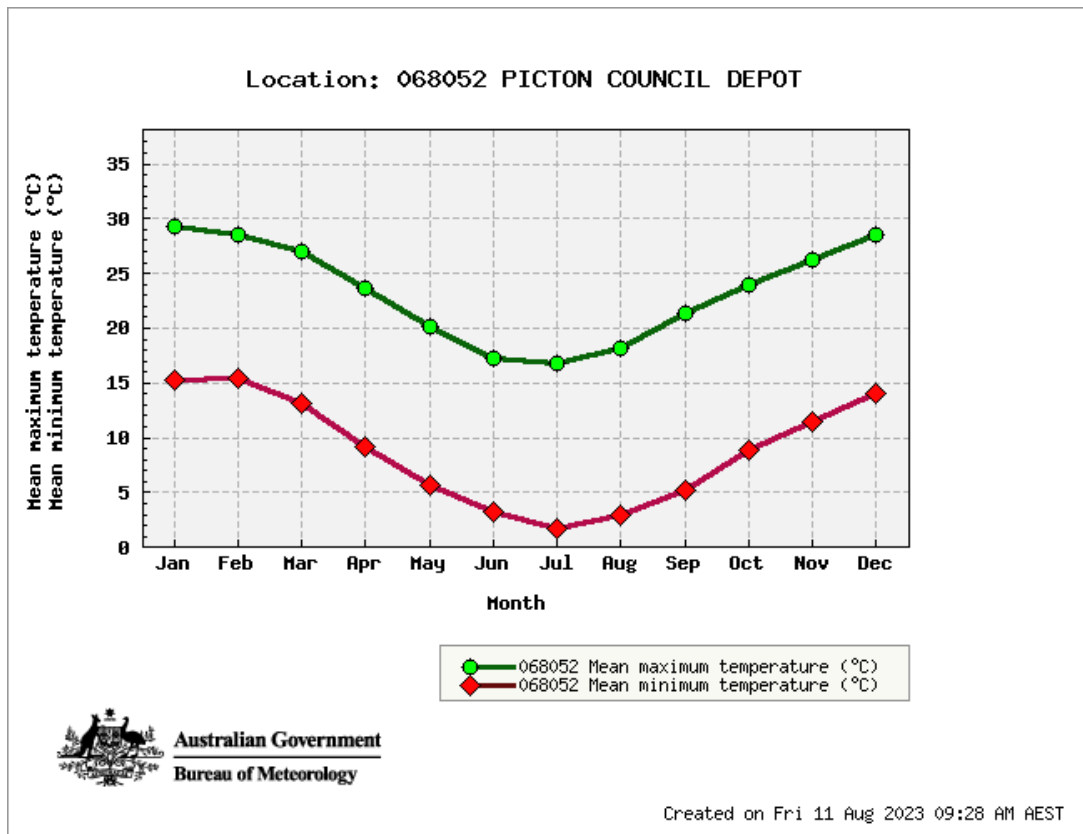
Much of the LGA falls within National Park or State Conservation Area, including a portion of the Blue Mountains and Nattai National Parks. As such, these areas, comprising much of the Western half of the Shire, are largely untouched bushland through which a number of waterways flow into the Wollondilly River/Lake Burragorang.

Climate

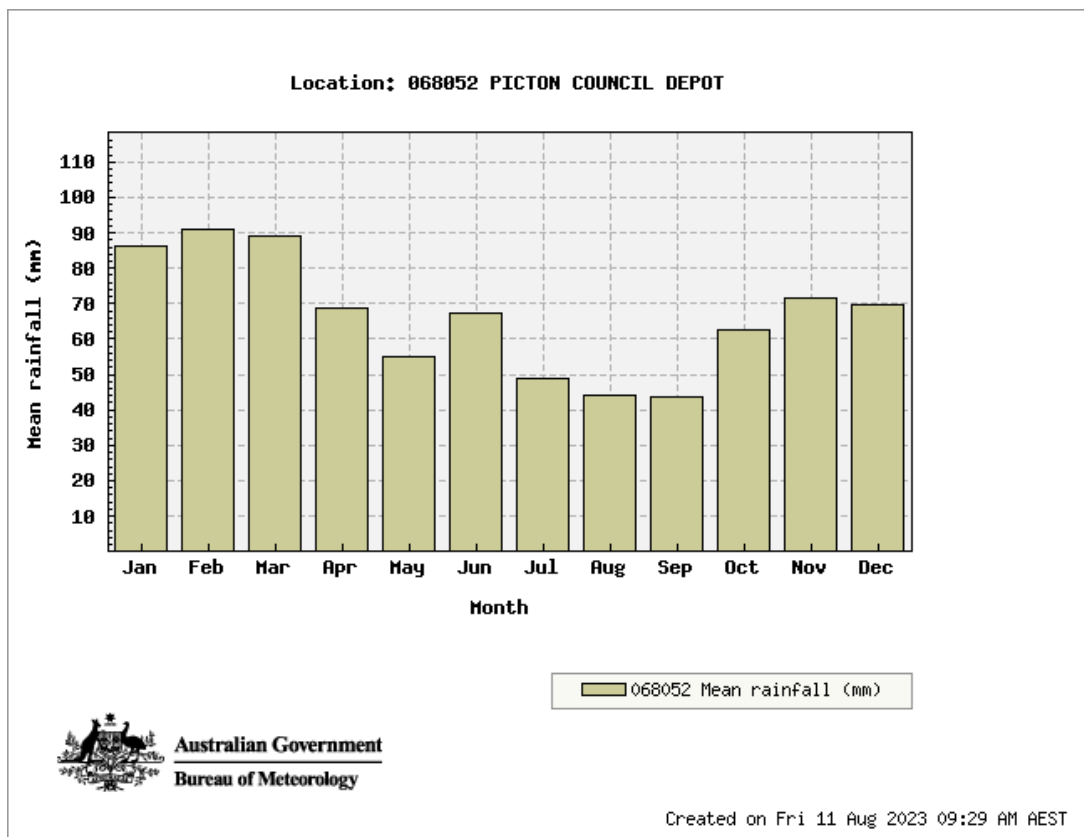
The typical average climate in the Wollondilly Shire area is a warm temperate climate with peak rainfall in the summer and autumn months and the bush fire season generally runs from August to December depending on the onset of summer rainfall. Monthly Bureau of Meteorology data for Picton (1881-2020) indicates an annual mean maximum temperature of 23.4°C, and an annual mean minimum of 8.8°C. The mean annual rainfall at Picton is 797.7mm.

Prevailing weather conditions associated with the bush fire season in the Wollondilly area usually coincide with strong south-west to north-west winds and influenced by drought and rainfall conditions. There are also frequent dry lightning storms that occur during the bush fire season.

Please see Wollondilly LGA's temperature and rainfall averages on the next page.



Source: Bureau of Meteorology (Data 1881-2023)



Source: Bureau of Meteorology (Data 1881-2023)

Land Use

The table below shows a break up of land use zones within Wollondilly Shire. It can be seen that the environmental zones that do not permit dwellings, C1, C2 & C3 make up the majority of the Shire, a combined 71.1%.

The three rural zones, RU1, RU2 and RU4, all allow for rural dwellings in dispersed localities. These three zones combined make up a total of 20.5% of the Shire. The R5 zones are typically dwellings on lots between 4,000m² and 2ha and make up a further 0.36% of the Shire.

The more urban areas in the business and residential zones (R2, R3) are relatively small in comparison to the expanse of Wollondilly Shire and combined only account for 0.8% of the surface land area. It is worth noting that there are numerous proposals to increase the area of the residential zone, possibly doubling this area within the next five years, however, within the overall context of the Shire this will remain a small percentage of total land area. Since 2016, some land has been rezoned at Wilton under the State Environmental Planning Policy (Growth Centres SEPP) to Urban Development Zone which makes up 0.28% of the Shire.

Land Use Zone / Type / Classification	Area (ha)	% of LGA
C1 - National Park and Nature	153,457	60.00%
C2 - Environmental Conservation	21,960	8.59%
C3 - Environmental Management	6,534	2.55%
C4 - Environmental Living	5,438	2.13%
E1 - Local Centre	83	0.03%
E3 - Productivity Support	6	0.00%
E5 - Heavy Industrial	105	0.04%
MU1 - Mixed Use	24	0.01%
R2 - Low Density Residential	1,989	0.78%
R3 - Medium Density Residential	74	0.03%
R5 - Large Lot Residential	908	0.36%
RE1 - Local Centre - Public Recreation	344	0.13%
RE2 - Private Recreation	213	0.08%
RU1 - Primary Production	17,623	6.89%
RU2 - Rural Landscape	32,886	12.86%
RU4 - Primary Production Small Lots	2,153	0.84%
RU5 - Village	6	0.00%
SP1 - Special Activities	451	0.18%
SP2 - Infrastructure	9,742	3.81%
C2 - Environmental Conservation	600	0.23%
SP2 - Infrastructure	78	0.03%
UD - Urban Development	709	0.28%
Wilton Town Centre (Zoning not available)	193	0.08%
C2 - Environmental Conservation	600	0.23%

Source Wollondilly Shire Council GIS System Extracted Aug 2023

Population and People

As at the 2021 Census, Wollondilly had an Estimated Resident Population (ERP) of 54,176 people and is forecast to grow at high rates. The largest towns of Picton and Tahmoor have the highest population of residents; the remaining population is dispersed amongst the smaller townships and rural localities.

Between 2021 and 2041, the population for Wollondilly Shire Council is forecast to increase by 44,173 persons (81.46% growth), at an average annual change of 3.02%.

Forecast growth for Wilton, a major growth suburb, for the period 2021 to 2041 is an annual increase of 10.67%.

The table below shows the 2021 Census population figures for the towns and villages within Wollondilly Shire.

Locality Populations

Town/Village	Population
Wallacia – Warragamba – Silverdale SSC14101(SSC) SSC14158(SSC) SSC13544 (SSC)	6,053
Orangeville – Werombi – and district SSC13094(SSC) SSC14232(SSC)	3,288
The Oaks – Belimbla Park – Glenmore SSC13831(SSC) SSC10261(SSC) SSC11669(SSC)	3,667
Camden Park – Mt Hunter – Cawdor SSC10772(SSC) SSC12765(SSC) SSC10863(SSC)	3,299
Menangle – Razorback SSC12568(SSC) SSC13328(SSC)	2,404
Picton – Mowbray Park – Maldon SSC13200(SSC) SSC12810(SSC) SSC12454(SSC)	5,417
Thirlmere – Lakesland SSC13847(SSC) SSC12258(SSC)	5,538
Tahmoor SSC13727(SSC)	5,785
Appin – Cataract – Darkes Forest SSC10063(SSC) SSC10854(SSC) SSC11209(SSC)	3,273
Douglas Park – Wilton SSC11283(SSC) SSC14311(SSC)	5,156
Bargo – Yanderra – Pheasants Nest SSC10198(SSC) SSC14461(SSC) SSC13191(SSC)	5,968
Buxton – Couridjah SSC10728(SSC) SSC11093(SSC)	2,254
Oakdale – Nattai – National Park SSC13054(SSC) SSC12915(SSC)	2,127

Source: Australian Bureau of Statistics, Census of Population and Housing 2016 and 2021.
Compiled and presented in profile.id by .id (informed decisions).

Headline Statistics

- Wollondilly has a significantly higher proportion of families with children compared to the Greater Sydney average (41.3% compared to 34.4%).
- There is a lower proportion of lone person households compared to the Greater Sydney average (16.2% compared to 22.2.5%).
- Wollondilly is predominantly made up of low density detached dwellings and so has far fewer medium/high density dwellings compared to the Greater Sydney average (only 4.8% compared to 46.5%).

- Home ownership rates are high in Wollondilly with only 15% of households renting compared to 30% for Greater Sydney.
- Wollondilly residents are predominantly Australian-born and English speaking. 11% of residents were born overseas compared to 38.6% for Greater Sydney.

Language Spoken at Home – Ranked by Size

Wollondilly Shire - Total persons (Usual residence)		2021	
Language (excludes English)		Number	Greater Sydney %
a Italian		359	0.7
a Arabic		358	0.7
Spanish		266	0.5
Maltese		202	0.4
Croatian		174	0.3
Mandarin		138	0.3
Greek		138	0.3
Serbian		95	0.2
German		77	0.1
Filipino/Tagalog		72	0.1

Source: Australian Bureau of Statistics, Census of Population and Housing 2016 and 2021.
Compiled and presented by .id., the population experts

- 4.8% of the population in Wollondilly require assistance in their day-to-day lives due to disability. This compares to 5.2% for Greater Sydney.
- Wollondilly residents are highly car dependent with only 1% using public transport as a means of travel to work compared to 5.5% for Greater Sydney.
- Aboriginal and Torres Strait Islander (ATSI) people make up 4.4% of Wollondilly's population compared to 1.7% for Greater Sydney.
- 116,868 (63.7%) of Wollondilly's working population travel outside of the Shire to work.
- 7,963 (30.1%) of Wollondilly's working population work within Wollondilly.

Method of Travel to Work

Wollondilly Shire - Employed persons (Usual residence)		2021	
Main method of travel	Number	%	Greater Sydney %
Train	198	0.7	4.1
Bus	28	0.1	1.4
Tram	0	—	0.1
Ferry	0	—	0.0
Taxi/ride-share	5	0.0	0.1
Car - as driver	13,960	52.6	34.2
Car - as passenger	834	3.1	2.6
Truck	601	2.3	0.6
Motorbike	55	0.2	0.4
a Bicycle	15	0.1	0.4
a Walked only	354	1.3	2.3
Other	188	0.7	0.8
a Worked at home	6,273	23.7	38.9
Did not go to work	3,887	14.7	13.6
Not stated	125	0.5	0.4
Total employed persons aged 15+	26,523	100.0	100.0

Source: Australian Bureau of Statistics, Census of Population and Housing 2016 and 2021. Compiled and presented by .id, the population experts.

Housing Tenure

Wollondilly Shire - Households (Enumerated)		2021	
Tenure type		Number	% Greater Sydney
a Fully owned		5,363	29.8
a Mortgage		8,530	47.3
Renting - Total		2,851	15.8
a Renting - Social housing		186	1.0
a Renting - Private		2,646	14.7
Renting - Not stated		19	0.1
Other tenure type		479	2.7
Not stated		796	4.4
Total households		18,019	100.0

Source: Australian Bureau of Statistics, Census of Population and Housing 2016 and 2021. Compiled and presented by .id, the population experts

Car Ownership

Wollondilly Shire - Households (Enumerated)		2021	
Number of cars		Number	% Greater Sydney
a No motor vehicles		441	2.4
1 motor vehicle		3,741	20.8
a 2 motor vehicles		6,639	36.9
3 or more motor vehicles		6,413	35.6
Not stated		776	4.3
Total households		18,010	100.0

Source: Australian Bureau of Statistics, Census of Population and Housing 2016 and 2021. Compiled and presented by .id, the population experts

Dwelling Type

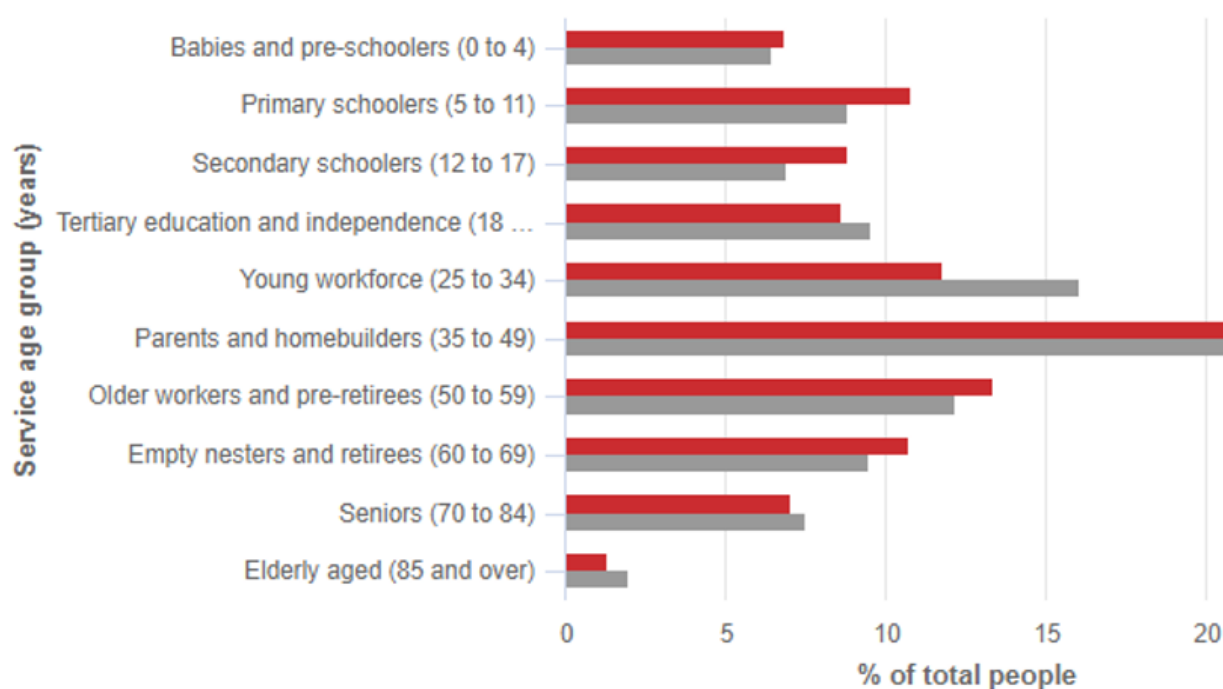
Wollondilly Shire		2021	
Dwelling type	Number	%	Greater Sydney %
Occupied private dwellings	18,010	95.2	91.9
Unoccupied private dwellings	894	4.7	7.9
Non private dwellings	21	0.1	0.1
Total dwellings	18,925	100.0	100.0

Source: Australian Bureau of Statistics, Census of Population and Housing 2016 and 2021. Compiled and presented by .id, the population experts

Age Structure – Service Age Groups, 2016

Total persons

■ Wollondilly Shire ■ Greater Sydney



Source: Australian Bureau of Statistics, [Census of Population and Housing](#), 2011 (Usual residence data). Compiled and presented in profile.id by .id

Employment Total by Industry

Wollondilly Shire		2021/22		
Industry	Number	%	New South Wales	
Agriculture, Forestry and Fishing	739	4.7	2.1	
Mining	1,900	12.0	1.1	
Manufacturing	1,195	7.5	6.2	
Electricity, Gas, Water and Waste Services	237	1.5	1.1	
Construction	2,830	17.8	8.9	
Wholesale Trade	275	1.7	3.0	
Retail Trade	952	6.0	9.3	
Accommodation and Food Services	797	5.0	6.0	
Transport, Postal and Warehousing	790	5.0	5.1	
Information Media and Telecommunications	40	0.3	2.2	
Financial and Insurance Services	175	1.1	5.5	
Rental, Hiring and Real Estate Services	232	1.5	1.8	
Professional, Scientific and Technical Services	676	4.3	10.1	
Administrative and Support Services	517	3.3	3.3	
Public Administration and Safety	655	4.1	6.1	
Education and Training	1,490	9.4	8.6	
Health Care and Social Assistance	1,294	8.2	14.2	
Arts and Recreation Services	359	2.3	1.6	
Other Services	709	4.5	3.8	
Total industries	15,862	100.0	100.0	

Source: National Institute of Economic and Industry Research (NIEIR) ©2023. Compiled and presented in economy.id by [.id](#) (informed decisions). NIEIR-ID data are adjusted each year, using updated employment estimates. Each release may change previous years' figures.

Transport Routes and Facilities

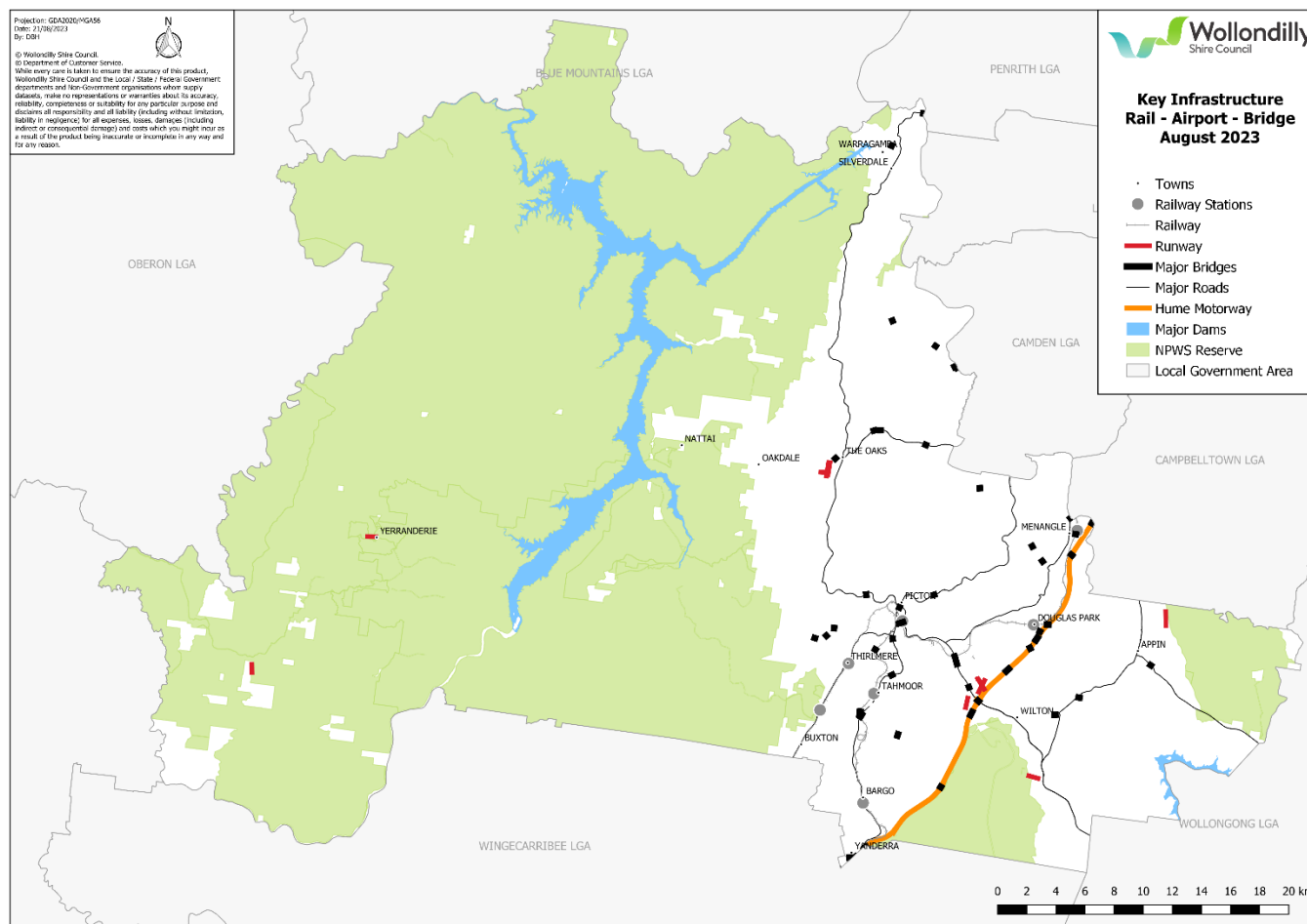
Within the Wollondilly Shire, train services are available from Menangle, Douglas Park, Picton, Tahmoor and Bargo rail stations. City Rail also runs limited coach services between Picton and Mittagong, available from Thirlmere, Couridjah and Buxton.

Wollondilly Active Transport Strategy – Key Road Network.



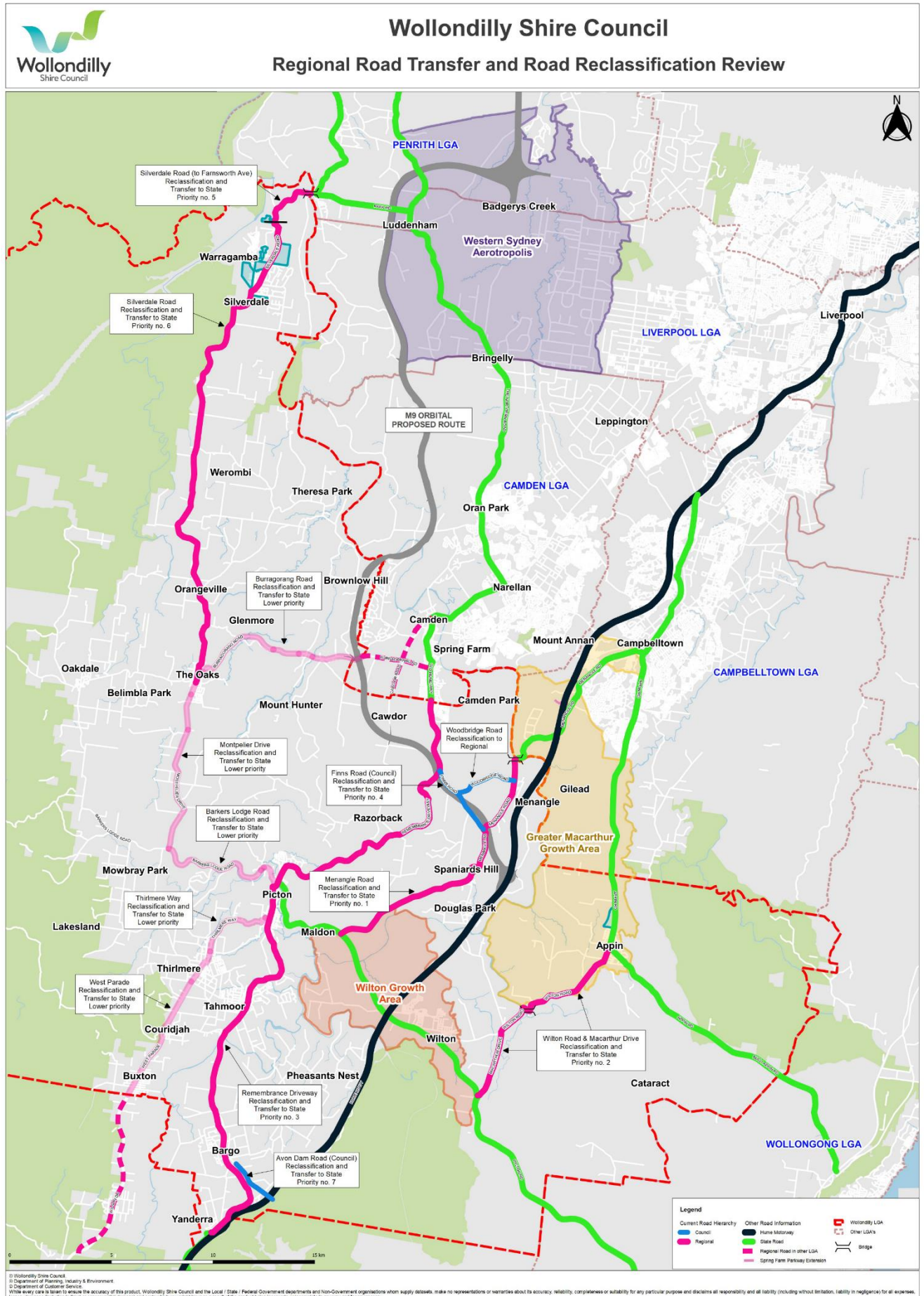
Source <https://www.yoursay.wollondilly.nsw.gov.au/wollondilly-active-transport-strategy>.

Wollondilly Key Infrastructure Rail – Airport – Bridge November 2023.



Key Roads Across the Shire

- Menangle Road
- Remembrance Drive
- Thirlmere Way
- West Parade
- Wilton Road
- Montpelier Drive
- Silverdale Road
- Burragorang Road
- Barkers Lodge Road
- Avon Dam Road
- Woodbridge Road



TRAINS

Transport NSW can be contacted by telephone on (02) 8202 2200 being the general enquiries number or directly by the station below:

Campbelltown	(02) 4629 0721 Open 24 hours Hurley Street, Campbelltown NSW 2560
Picton	(02) 4677 1402 Station Master for Wollondilly Area Station Street, Picton NSW 2571
Bargo	(02) 4684 1320 Open 5.45am to 9.45am Monday to Friday Hume Highway, Bargo NSW 2574
Tahmoor	(02) 4681 8218 Open 5.45am to 1.45pm Monday to Friday George Street, Tahmoor NSW 2573
Douglas Park	(02) 4677 1402 Camden Road, Douglas Park NSW 2569
Thirlmere	1300 115 599 10 Barbour Rd, Thirlmere NSW 2572 NSW Rail Museum. Steam train service
Menangle	(02) 4677 1402 Stevens Road, Menangle NSW 2568
Menangle Park	(02) 4677 1402 Racecourse Drive, Menangle Park NSW 2563

BUS SERVICES

Bus services are available from Warragamba and Wallacia (Busways); and Picton and southern areas (Picton Buslines and Busabout).

Information about timetables can be sought via the following methods:

Busways	131 500 47-53 Mullins Rd, Penrith NSW 2750 Website
Picton Buslines	(02) 4677 1564 18 Wonga Road, Picton NSW 2571 Website
Busabout	(02) 4631 4200 44A Bluett Drive, Smeaton Grange NSW 2567 Website

Taxi services provided to the southern region of the Wollondilly Shire are undertaken by Camden Wollondilly Cabs and they can be contacted by phone on 13 38 34. A wheelchair accessible taxi is available via this service. The Uber service is also available in Wollondilly.

Economy and Industry

The largest employer by industry within Wollondilly is construction with 2,830 jobs (17.8%), followed by mining with 19,000 jobs (12.0%), education and training jobs (9.4%) and manufacturing (7.5%). Mining and construction combined make up about 29.8% of the total workforce.

The Wollondilly Shire's mining is almost entirely comprised of coal mining, while construction is dominated by construction services and building construction. The main employers within the mining industry are at Appin/Douglas Park being South32 (previously Illawarra Coal/BHP Billiton) and at Tahmoor being SIMEC Mining (previously Glencore).

The construction industry is made up of all the varied trades across this sector with many individual companies contributing to the construction industry.

Council's economic development team has a significant database covering a portion of businesses throughout the shire.

In cases of emergency relevant to local business and industry, the database can be utilised to send emails to the business community.

The Australian Business Register (ABR) data set for the NSW Bushfires is now available to download. This data set represents the most heavily affected areas. Additional data sets will be created as more information is known.

To access this information: go to <https://datatransfer.ato.gov.au>; log in using your current Bulk Data Exchange user name and password; click on 'Download' beside 131 023 Disaster - NSW Bushfires; wait for the Save dialog box to display; select 'Save'; choose a location to store the file; select 'Close' after the file transfer is complete; and log out.

If you do not have access to this service or are experiencing difficulties, including password issues, contact 1300 139 025 or email ABRenquiries@abr.gov.au.

It may be of value to directly contact certain businesses by phone due to their size and traffic activity to warn of any requests made by emergency services and Council.

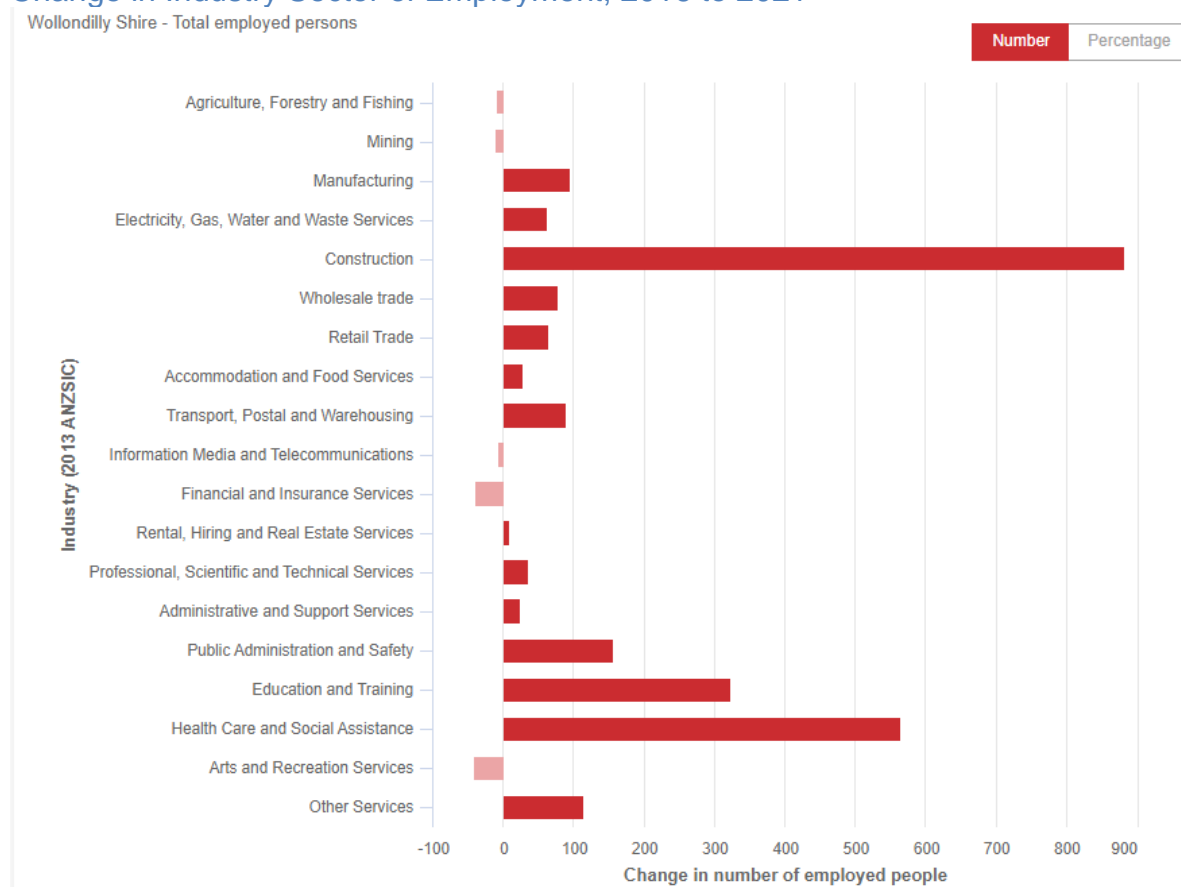
Wollondilly Shire Council is investigating the ability to provide LEMC members with login and availability of list of businesses.

Employment Status

Wollondilly Shire - Persons in the labour force (Usual residence)		2021	
Employment status		Number	Greater Sydney %
Employed		26,527	97.1
Employed full-time		15,053	55.1
Employed part-time		8,186	30.0
Employed, away from work		3,288	12.0
a Unemployed (Unemployment rate)		785	2.9
Looking for full-time work		457	1.7
Looking for part-time work		328	1.2
Total labour force		27,312	100.0

Source: Australian Bureau of Statistics, Census of Population and Housing 2016 and 2021. Compiled and presented by .id

Change in Industry Sector of Employment, 2016 to 2021



Source: Australian Bureau of Statistics, Census of Population and Housing, 2011 and 2016 (Usual residence data). Compiled and presented in profile.id by .id, the population experts.

Employment (total) by industry

Wollondilly Shire		2021/22	
Industry	Number	%	New South Wales
Agriculture, Forestry and Fishing	739	4.7	2.1
Mining	1,900	12.0	1.1
Manufacturing	1,195	7.5	6.2
Electricity, Gas, Water and Waste Services	237	1.5	1.1
Construction	2,830	17.8	8.9
Wholesale Trade	275	1.7	3.0
Retail Trade	952	6.0	9.3
Accommodation and Food Services	797	5.0	6.0
Transport, Postal and Warehousing	790	5.0	5.1
Information Media and Telecommunications	40	0.3	2.2
Financial and Insurance Services	175	1.1	5.5
Rental, Hiring and Real Estate Services	232	1.5	1.8
Professional, Scientific and Technical Services	676	4.3	10.1
Administrative and Support Services	517	3.3	3.3
Public Administration and Safety	655	4.1	6.1
Education and Training	1,490	9.4	8.6
Health Care and Social Assistance	1,294	8.2	14.2
Arts and Recreation Services	359	2.3	1.6
Other Services	709	4.5	3.8
Total industries	15,862	100.0	100.0

Source: National Institute of Economic and Industry Research (NIEIR) ©2023. Compiled and presented in economy.id by [.id](#) ([informed decisions](#)). NIEIR-ID data are adjusted each year, using updated employment estimates. Each release may change previous years' figures.

Annexure B – Hazards and Risks Summary

A local Emergency Risk Management (ERM) Study was undertaken by the Wollondilly Local Emergency Management Committee identifying the following hazards as having risk of causing loss of life, property, utilities, services and/or the community's ability to function within its normal capacity. These hazards have been identified as having the potential to create an emergency. The Wollondilly Local Emergency Management Committee reviews the **Study** as a result of emergency events and CMG reviews. A full list of CMGs and their current status is uploaded to EMOS on a quarterly basis.

August 2023

Hazard	Risk Description	Likelihood Rating	Consequence Rating	Risk Priority	Combat / Responsible Agency
Agricultural Disease (Animal/Plant)	An agriculture/horticulture incident that results, or has potential to result, in the spread of a communicable disease or infestation.	Likely	Major	High	Department of Primary Industries
Bridge Collapse	Failure of a major bridge structure with or without warning owing to structural failure or as a result of external/ internal events or other hazards/ incidents.	Rare	Insignificant	Low	LEOCON
Building Collapse	Collapse of building owing to structural failure or impact from external/internal event of other hazards /incidents.	Rare	Insignificant	Low	FRNSW (USAR) LEOCON

Hazard	Risk Description	Likelihood Rating	Consequence Rating	Risk Priority	Combat / Responsible Agency
Communicable Disease (Human/Animal)	Pandemic illness that affects, or has potential to affect, large portions of the human or animal population.	Possible	Moderate	High	Department of Health
Dam Failure	A dam is compromised that results in localised or widespread flooding.	Rare	Major	Medium	Dam Owners NSW SES
Earthquake	Earthquake of significant strength that results in localised or widespread damage.	Likely	Insignificant	Medium	LEOCON
Fire (Bush or Grass)	Major fires in areas of bush or grasslands.	Almost Certain	Major	Extreme	NSW RFS FRNSW
Fire (Industrial)	Serious industrial fire in office complexes and/or warehouses within industrial estates.	Rare	Major	Medium	FRNSW NSW RFS
Fire (Commercial)	Serious commercial fires in shopping centres, aged persons units, nursing homes and hospitals.	Rare	Major	Medium	FRNSW NSW RFS
Fire (Residential)	Serious residential fire in medium/high rise apartments.	Likely	Insignificant	Medium	FRNSW NSW RFS

Hazard	Risk Description	Likelihood Rating	Consequence Rating	Risk Priority	Combat / Responsible Agency
Flood (Flash)	Heavy rainfall causes excessive localised flooding with minimal warning time.	Likely	Minor	High	NSW SES
Flood (Riverine)	River flows exceed the capacity of normal river systems resulting in flood waters escaping and inundating river plains.	Likely	Major	High	NSW SES
Hazardous Release	Hazardous material released as a result of an incident or accident.	Almost Certain	Minor	High	FRNSW
Heatwave	A sequence of abnormally hot conditions having the potential to affect a community adversely.	Almost Certain	Moderate	High	SEOCON
Landslip	Landslip/landslide resulting in localised or widespread damage.	Possible	Insignificant	Low	LEOCON
Storm	Severe storm with accompanying lightning, hail, wind, and/or rain that causes severe damage and/or localised flooding.(includes tornado).	Almost Certain	Moderate	High	NSW SES
Transport Emergency (Air)	Aircraft crashes in LGA resulting in large number of fatalities, injuries and/or damage to property.	Rare	Minor	Low	LEOCON

Hazard	Risk Description	Likelihood Rating	Consequence Rating	Risk Priority	Combat / Responsible Agency
Transport Emergency (Road)	A major vehicle accident that disrupts one or more major transport routes that can result in risk to people trapped in traffic jams, restrict supply routes and/or protracted loss of access to or from the area.	Almost Certain	Moderate	High	LEOCON
Transport Emergency (Sea)	A major accident that results in environmental damage and major recovery operation.	Rare	Insignificant	Low	Relevant Port / Maritime
Tsunami	A tsunami wave of magnitude that presents a risk to land and marine elements.	Rare	Insignificant	Low	NSW SES
Utilities Failure	Major failure of essential utility for unreasonable periods of time as a result of a natural or man-made occurrence.	Unlikely	Moderate	Medium	LEOCON

Annexure C – Local Sub Plans, Supporting Plans and Policies

Responsibility for the preparation and maintenance of appropriate sub and supporting plans rest with the relevant Combat Agency Controller or the relevant Functional Area Coordinator.

The sub/supporting plans are developed in consultation with the Wollondilly LEMC and the community.

The plans listed below are supplementary to this EMPLAN. The sub/supporting plans have been endorsed by the LEMC and are determined as compliant and complimentary to the arrangements listed in this EMPLAN.

These plans are retained by the LEMO on behalf of the LEMC and public release versions may be available on the website of the responsible agency or functional area.

Plan/Policy	Purpose	Combat / Responsible Agency
Wollondilly Shire Flood Emergency Sub Plan (CM 12963#9) Endorsed February 2022	The plan covers preparedness measures, the conduct of response operations and the coordination of immediate recovery measures from flooding within the Wollondilly Shire Council area. It covers operations for all levels of flooding within the Council area.	NSW State Emergency Service
Wollondilly/Wingecarribee Bush Fire Risk Management Plan (TRIM 2200#221) Endorsed June 2017	Management and combat of bush and grass fires.	NSW Rural Fire Service
Warragamba Chlorination Plant Pollution Incident Response Management Plan (CM422-8430#80) Endorsed 5/5/2023	Evacuation plan area associated with a chlorine gas leak for a 1km radius from Lot 4 DP 1055236.	Fire & Rescue NSW
Animal Evacuation Memorandum of Understanding (CM 422-1#1382) Executed 4 November 2021	Agreement between a Camden and Wollondilly Councils for the use of Bicentennial Equestrian Park as an animal evacuation centre	Camden Council/Wollondilly Council