



BUSHFIRE PROPERTY PROTECTION SOLUTIONS



creating the
CONFIDENCE *to* **LEAVE**

Are you thinking about moving into the Wollondilly shire and concerned about the risks associated with bushfire and your new home?

Whilst the risk of bushfire in this area is very real, there are things you can do to greatly reduce your properties exposure to damage or loss, thus giving you the peace of mind to enjoy your new home and the extensive natural environment that surrounds us.

There are a few points that are not commonly known in regard to your property in the event of a bushfire:

The RFS concentrates on protecting houses. Other structures such as sheds, stables and kennels are left to fend for themselves during a fire.

Mains water pressure, in most cases, is greatly diminished due to overuse during a fire threat, rendering it virtually useless when it's needed most.

During a bushfire, power is likely to be cut off by fire damage or switched off deliberately for the safety of fire fighters. This will have an obvious impact on the use of electric pumps and other electrically powered equipment.

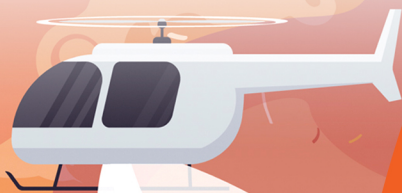
Whilst you may be well insured, if your property is lost to fire, when you go to rebuild you will need to fully comply with the latest fire zoning and Basix requirements.

This can potentially impact if, what and where you are able to rebuild on your property.

And whilst insurance will rebuild your structures and replace much of your contents, it doesn't replace the many things that are important to us that money can't buy.

*So how can these
issues be
overcome?*

After suffering our own personal losses in the 2019 bushfires that ravaged our community, **Bushfire Property Protection Solutions (BPPS)** was formed to address these very issues. We now offer a range of solutions to protect your property without you even having to be at home or rely on mains water or electricity.



There are two key stages in a bushfire emergency in relation to the fire itself:

1. The first is ember attack, which is responsible for approximately 90% of property losses.
2. The second stage is the arrival of the actual fire front.

When a large bushfire is moving through an area, it is creating its own weather.

The key element is very strong scorching hot winds which blow vast amounts of burning ember material ahead of the main front.

Much of this material is forced upwards where it is blown ahead of the fire for up to a kilometre or more until it falls from the sky as ember rain.

These embers can ignite any combustible material it comes into contact with, especially in very hot, dry conditions.

The fire also forces a considerable amount of burning debris from the fire front itself and onto structures where it can build up in ember traps against your home, sheds, stables and other structures.

The natural enemy of fire is water.

The **Rain Shield System** isn't unique to **BPPS**, there are other lesser versions on the market. What is unique to our system is that it will take care of a property without any input from the homeowner.

It is completely off grid and manages its own water supply using it only when it is required ensuring the system is operable when the fire finally arrives.

Our system is computer controlled and utilises a range of sensors that can identify the difference between an ember attack and the arrival of direct fire.

The system will run a periodic wet down cycle during ember attack and switch to continuous operation when the fire front is approaching. It will then switch itself off when the risk has passed and revert to its passive monitoring status should a further ember attack occur as it can with a wind change.

*The
solution is
simple!*

Encase your home and other structures in a shield of water that cools the immediate environment around your structures, wets all surfaces and extinguishes any burning material that comes into contact with your home.






BUSHFIRE PROPERTY PROTECTION SOLUTIONS

creating the
CONFIDENCE *to* **LEAVE**

For more detailed information, you can visit us at:
www.bushfirepropertyprotectionsolutions.com.au

 @bushfirepropertyprotectionsolutions

 @bushfirepps