

✗ WRONG

These items are WRONG and will NOT be collected in your household clean up



Hazardous Materials

Medical Waste, Sharps Objects, Syringes, Shattered Glass, Glass Tables or Furniture, Fish Tanks, Mirrors, Windows, Deceased Animals, Animal Waste



Heavy/Large Items

Tyres, Car Parts, Car batteries, Tree Stumps or Roots, Large objects over 1.7m *eg. large dining tables or lounges*



Building and Demolition Waste

Bricks, Concrete, Tiles, Masonry, Baths, Rocks, Gyprock Sheets, Insulation Batts, Items Containing Asbestos, or any Dangerous Waste *eg. Barbed Wire*



Food/General or Garden Waste

Food Scraps, Household Kitchen Waste, Compost, Garden Clippings, Tree branches



Chemical Waste

Paint, Oil, Gas Bottles, Fire Extinguishers, Pesticides, Herbicides, House/Pool Cleaner Liquids of any kind, Hazardous Waste and Chemicals, Commercial or Industrial Waste.

Vehicle batteries can no longer be presented for collection by the clean up service.

All types of batteries can be safely disposed of for free at Bargo Waste Management Centre or at your nearest Household Chemical CleanOut event.
www.cleanout.com.au or 131 555



✓ RIGHT

These items are RIGHT and WILL be collected in your household clean up



Household Furniture*

Broken or Unwanted Couches, Chairs, Rugs, Carpet, Linoleum, Cabinets, Drawers, Tables, Desks, Mattresses
**Items must be less than 1.7m in length and in rolls*



Household Goods/Loose Items*

Toys, Prams, Clothing, Linen, Crockery, Boxes, Bicycles, Sporting Equipment
**Loose items must be in boxes or bags*



Metal Appliances/White Goods*

Stove, Washers, Dryers, Air Conditioners, Toasters, Hot Water Systems and Refrigerators ♻️
**Please see safety instructions*

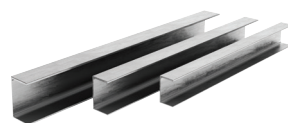


Electronics

Televisions, Computers, Kettles, Heaters, Lamps, Fans ♻️



Place recyclable items in a separate pile
(Metal Appliances/ White Goods, Electronics and Metal)



Metal

Metal ♻️
**Metal items must be less than 1.7m*

! Keep this flyer as a reminder for your next clean up dates!

Household Clean Up Dates

You live in

1st Clean Up Starts

2nd Clean Up Starts

Dear Resident,

Wollondilly Shire Council provides two scheduled household clean up collections each financial year to residential properties using our waste service. The collections are to assist with the removal of bulky household materials.

How to use the clean up collection service

Putting out materials for collection:

- Items must be placed out in a neat and tidy manner on the kerb, secure loose items in bundles or boxes and avoid footpaths, mailboxes and driveways. Make sure materials are easily and safely accessible for collection staff
- Place out items no earlier than 48 HOURS before your collection is due to start
(*Placing out items early can be treated as illegal dumping and may attract a fine*)
- Place items directly in front of your property unless otherwise advised by Council
- Avoid placing materials under trees, low power lines or other overhead obstructions
- Do not park vehicles in front of your pile
- Materials cannot be placed out after the collection has started in your area, as vehicles will not return
- Please place all recyclable items including metal items and e-waste to the side so these items can be easily spotted and recycled ♻️

Important collection tips:

- Not every material type is suitable for the clean up collection service
(*Please check the WRONG list on the back of this pamphlet*)
- Only items which can be easily handled and safely lifted by two people into the truck will be collected
- Items longer than 1.8 metres will NOT be collected as they will not fit into the truck

Important safety tip:

- Remove doors or locks from fridges and freezers

How much can I put out for collection?

- Limit per collection: 1.5 cubic metres
- Piles greater than the 1.5 cubic metre limit will NOT be collected and illegal dumping penalties may apply for properties which are not within the collection limit

Want to look up your clean up dates online?

Type in your address at wollondilly.nsw.gov.au/cleanup to find out the clean up dates in your area.

