

The General Manager
Wollondilly Shire Council
PO Box 21
Picton NSW 2571



Our reference: 17000198-L-01

Your reference:

www.seec.com.au

18th October 2017

Dear Sir/Madam

**Re: Lot 1 DP 940895 No. 600 West Parade, Buxton
Salinity Assessment**

It is proposed to subdivide Lot 1 DP 940895 West Parade Buxton into four new rural residential lots. SEEC have been commissioned to comment on the likely level of constraint posed by salinity (whether present or in the future).

The site is mapped to lie of the Lucas Heights Soil landscape (DLWC/SCA 2002). The soil landscape mapping says salinity has not been observed on this soil landscape. Our local experience confirms this.

The latest *Salinity Hazard and Salt Outbreaks* Map (DECC, 2008) shows that salinity has not been observed in the *locality* of the site (i.e. the site and land within 1 km² around it). The locality is marked as entirely green (Figure 1).

The proposed subdivision represents a “medium-sized” development as defined in Section 7.6 of WSROC (2004). However, given there are no proposed activities that could be considered *Salinity Risks* as defined in WSROC (2004), we consider it is appropriate to follow the flow chart given at Section 7.2 of that document (i.e. the chart for single lot developments). In addition, given the geological information available, we consider a site-specific investigation is not warranted.

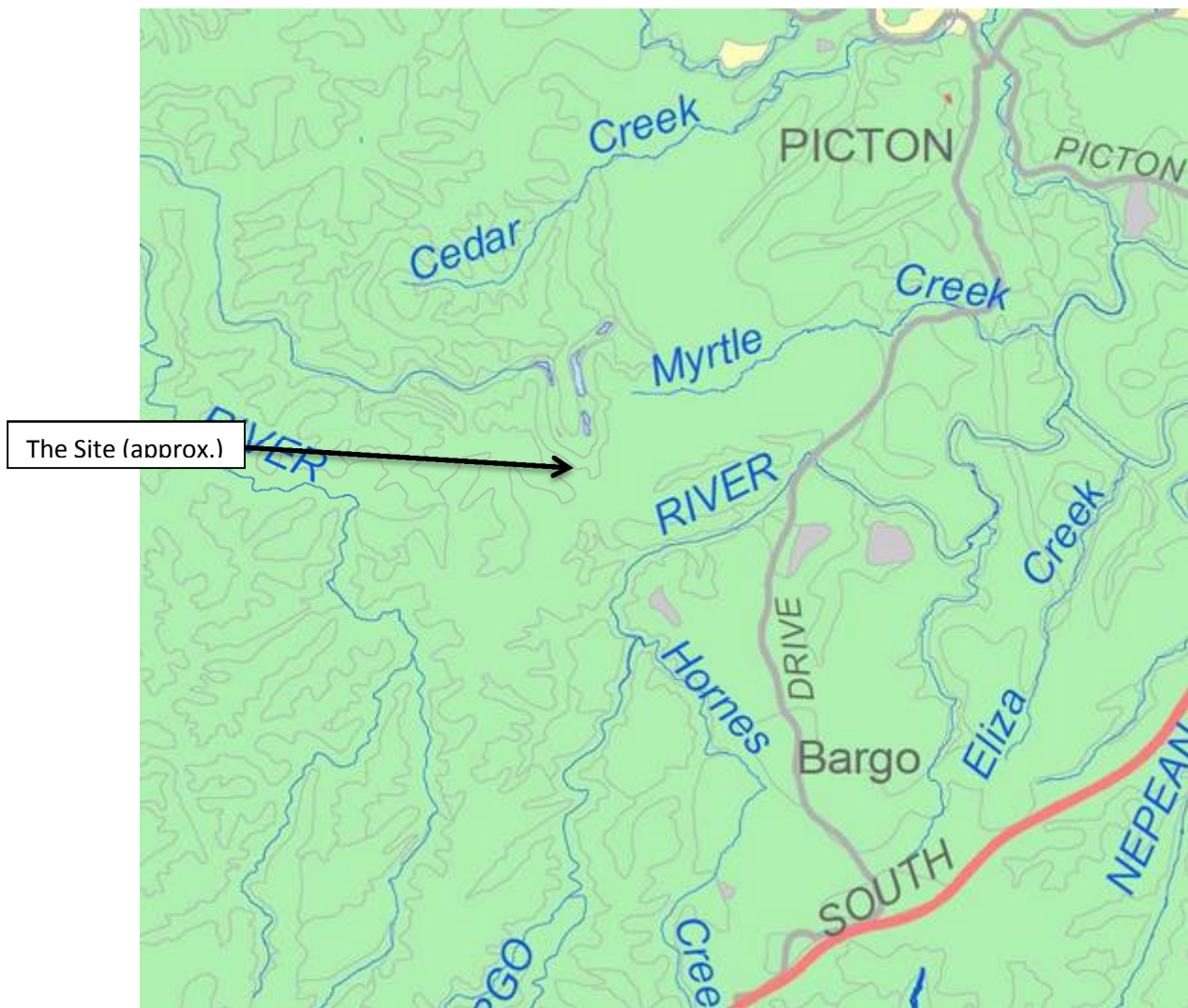


Figure 1 - Extract from latest salinity mapping. Green = no salinity observed.

Following WSROC's flow chart:

7.2 Single lot development application

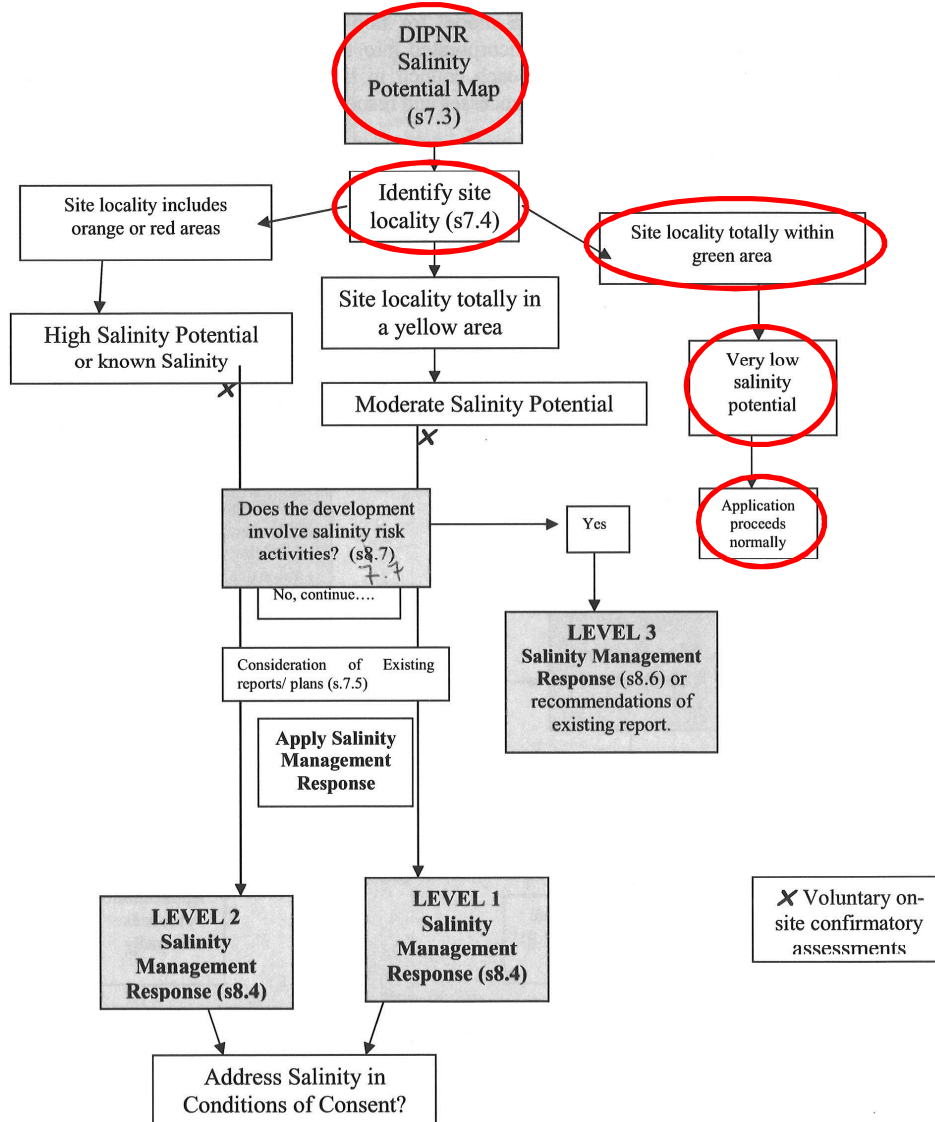
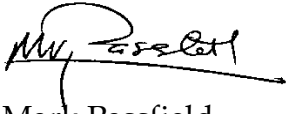


Figure 12: Single lot salinity assessment flow chart

The site is entirely within a green area on the latest salinity map → there is a very low salinity potential → the application may proceed normally.

A handwritten signature in black ink, appearing to read 'Mark Passfield', with a long horizontal stroke extending to the right.

Mark Passfield
Director
SEEC

References:

DLWC/SCA (2002). *Soil Landscapes of The Sydney Catchment Authority's Hydrological Catchments*. NSW Department of Land and Water Conservation and Sydney Catchment Authority.

WSROC (2004). *Western Sydney Salinity Code of Practice (2004)*. Western Salinity. Salinity Working Party. Western Sydney Regional Organisation of Councils Ltd.