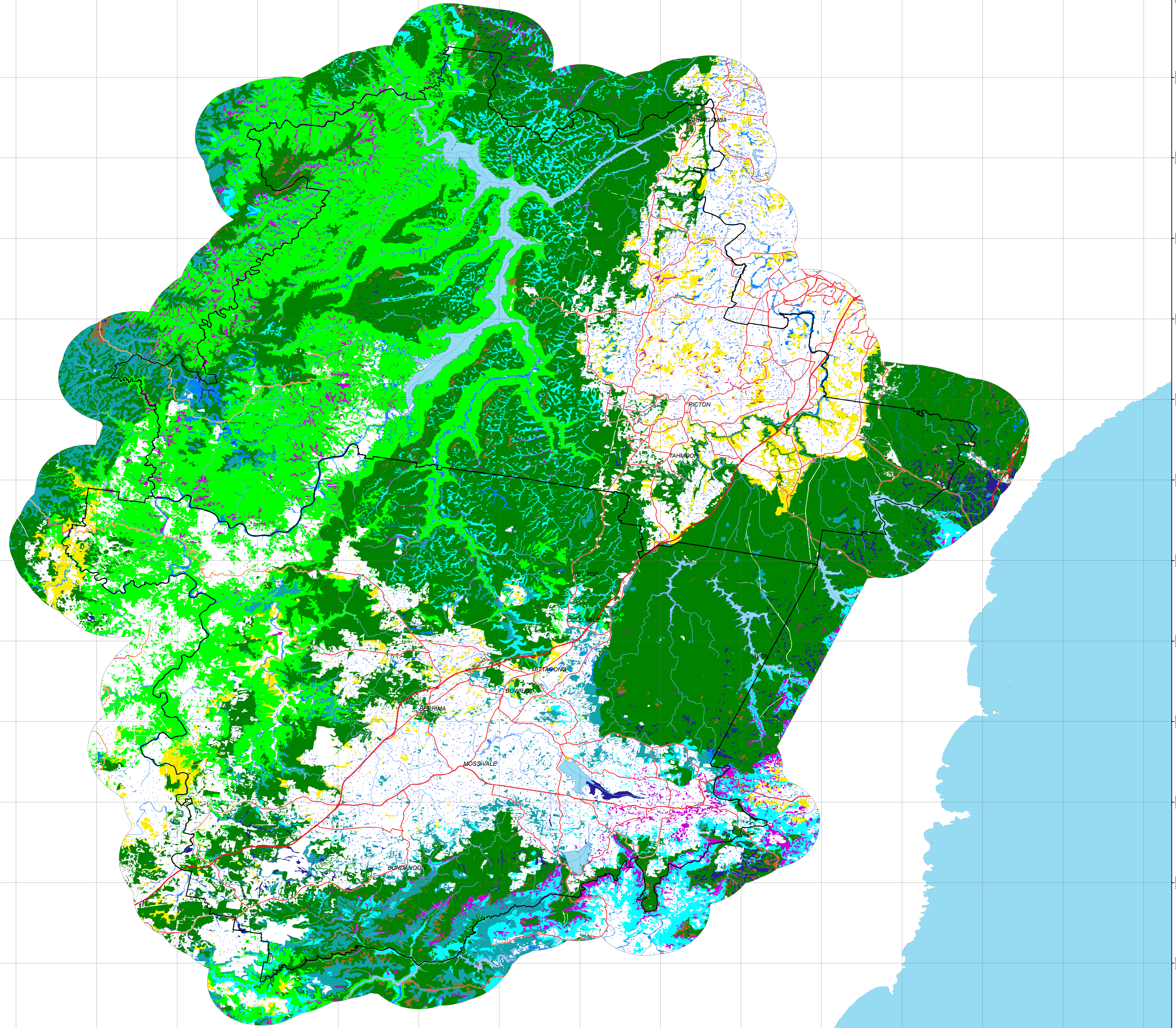


Southern Highlands Zone

Vegetation Categories*



Legend

Keith Category

- Alpine complex
- Arid shrublands (Acacia subformation)
- Arid shrublands (Chenopod subformation)
- Cleared
- Dry sclerophyll forests (Shrub/grass subformation)
- Dry sclerophyll forests (Shrubby subformation)
- Forested wetlands
- Freshwater wetlands
- Grasslands
- Grassy woodlands
- Heathlands
- Rainforests
- Saline wetlands
- Semi-arid woodlands (Grassy subformation)
- Semi-arid woodlands (Shrubby subformation)
- Wet sclerophyll forests (Grassy subformation)
- Wet sclerophyll forests (Shrubby subformation)

Jurisdiction

- Jurisdiction
- BfMC 5km Buffer
- Other States
- NSW

Major Roads

- Major Road Sealed
- Major Road Unsealed
- Secondary Road Sealed
- Secondary Road Unsealed

Hydrology

- Hydro-Line Perennial
- Hydro-Line Non Perennial
- Drainage Perennial
- Drainage Non Perennial

*Keith, D. 2004. *Ocean Shores to Desert Dunes: The Native Vegetation of New South Wales and the ACT*. NSW Department of Conservation

Data Dictionary:

Data Type	Source	Date
BfMC Boundaries (incl 5km Buffer)	NSW RFS	October 2015
Towns or Locations	NSW LPI	October 2015
Road Network	NSW LPI	October 2015
Drainage	NSW LPI	October 2015
Vegetation	NPWS / Council / RFS	September 2010
State Backdrop	NSW LPI	October 2015

Disclaimer:

The NSW Rural Fire Service makes every effort to ensure the quality of the information available on this map. Before relying on the information on this map, users should carefully evaluate its accuracy, currency, completeness and relevance for their purposes, and should obtain any appropriate professional advice relevant to their particular circumstances.

The NSW Rural Fire Service can not guarantee and assumes no legal liability or responsibility for the accuracy, currency or completeness of the information.

Date Created: 9/10/2015 Created By: Erin Heinrich, GIS Support Officer

NSW Rural Fire Service

1:158,000 @ A0

