

Ordinary Meeting Of Council



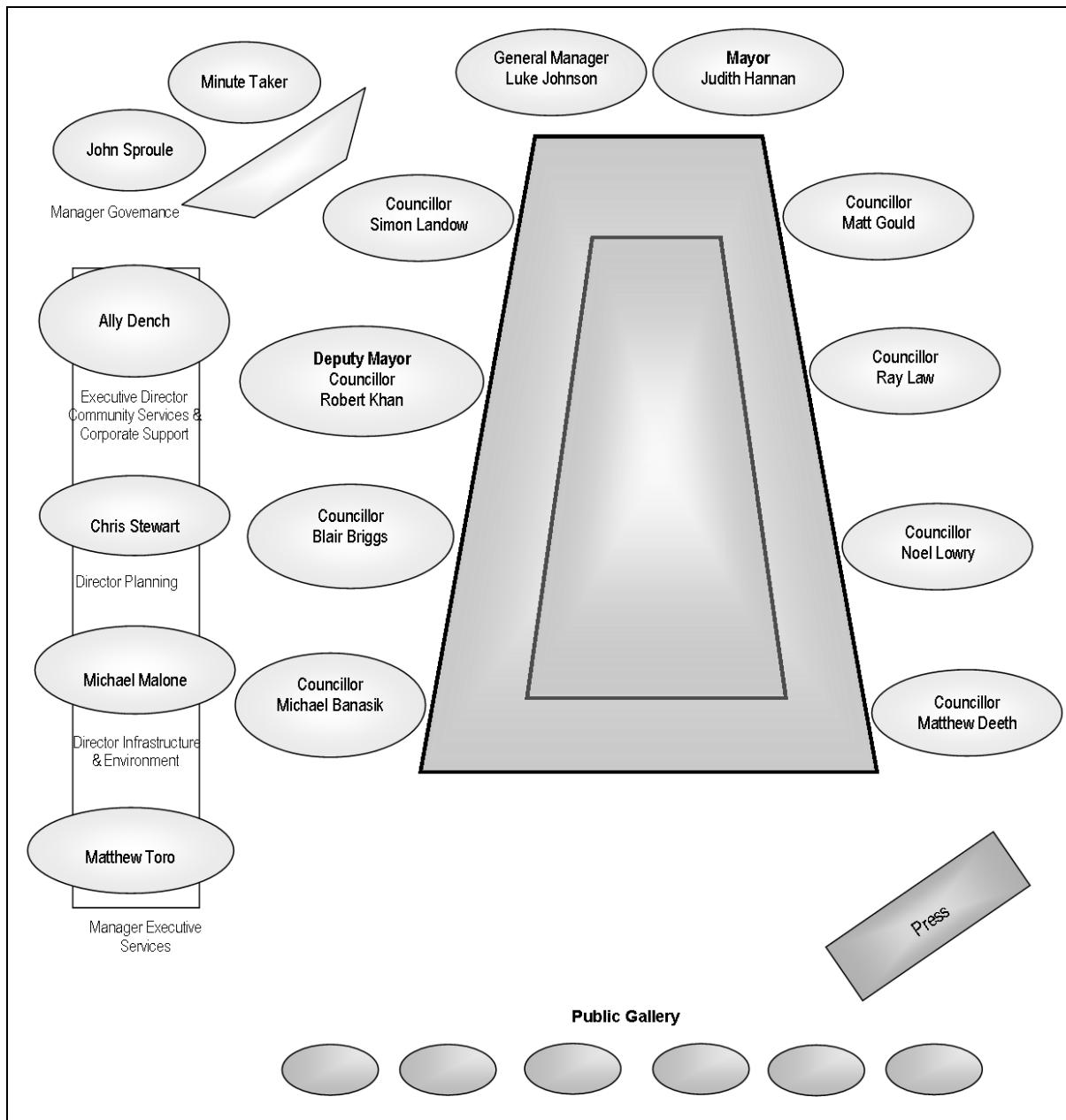
Wollondilly Shire Council

Notice of Meeting & Agenda Monday 19 December 2016

You are invited to attend the next Ordinary Meeting of Council to be held in the Council Chambers, 62-64 Menangle Street Picton on Monday 19 December 2016 commencing at 6.30pm.

Luke Johnson
General Manager

Seating in Council Chambers



EAST WARD

Cr Matthew Deeth
Cr Ray Law
Cr Noel Lowry

0428 335 743
0427 901 275
0406 047 086

Email: matthew.deeth@wollondilly.nsw.gov.au
Email: ray.law@wollondilly.nsw.gov.au
Email: noel.lowry@wollondilly.nsw.gov.au

CENTRAL WARD

Cr Michael Banasik
Cr Blair Briggs
Cr Robert Khan

0425 798 068
0418 269 913
0407 705 100

Email: michael.banasik@wollondilly.nsw.gov.au
Email: blair.briggs@wollondilly.nsw.gov.au
Email: robert.khan@wollondilly.nsw.gov.au

NORTH WARD

Cr Matt Gould
Cr Judith Hannan
Cr Simon Landow

0427 936 471
0414 557 799
0415 406 719

Email: matthew.gould@wollondilly.nsw.gov.au
Email: judith.hannan@wollondilly.nsw.gov.au
Email: simon.landow@wollondilly.nsw.gov.au

Business Papers will be available from Council's Foyer or alternatively on Council's website.

Contents

OPENING

RECORDING OF THE MEETING

In accordance with Council's Code of Meeting Practice the electronic recording of the Council Meeting and the use of electronic media during the proceedings is not permitted. This includes devices such as laptops, mobile phones, tape recorders and video cameras.

NATIONAL ANTHEM

ACKNOWLEDGEMENT OF COUNTRY

APOLOGIES AND LEAVE OF ABSENCE REQUESTS

DECLARATION OF INTEREST

CONFIRMATION OF MINUTES

- Ordinary Meeting of Council held on 21 November 2016
- Closed Meeting of Council held on 21 November 2016

MAYORAL MINUTE

PLANNING AND ECONOMY 13

PE1	Development Application No. 010.2009.00000827.003 – Modification of Consent No. 010.2009.00000827.001 relating to Alterations and Additions to an Existing Poultry Farm Development at Lot 222 DP 1206433 – 430 Arina Road, Bargo	16
PE2	Planning Proposal – Bronzewing Street, Tahmoor	29
PE3	Planning Proposal to Enable an Additional Permitted Use at No. 7 Bronzewing Street, Tahmoor	50
PE4	Planning Proposal – No. 95 Great Southern Road, Bargo.....	67
PE5	Development Control Plan Provisions for Boundary Adjustments	80
PE6	Draft South West District Plan	84
PE7	Wilton New Town.....	92

GOVERNANCE 106

GO1	Notice of Motion Status Report – November 2016.....	108
GO2	Investment of Funds as at 31 October 2016	109
GO3	Revised Financial Policies (Investment, Borrowing & Overdraft Policies)	115
GO4	Ordinary Council Meeting and Community Forum Dates – 2017.....	118
GO5	The Role of the Mayor during the Ordinary Council Meeting Recess	120
GO6	Annual Review of Closed Reports 2016.....	122
GO7	Annual Report – Code of Conduct Complaints	126
GO8	Audit Committee Annual Review	128
GO9	Internal Reporting Policy – Review of Existing Protocol and Change of Classification	133
GO10	Review of the Code of Meeting Practice	135

ENVIRONMENT..... 137

EN1	Removal of Fee for E-Waste Collection at Bargo Waste Management Centre for 2016/17 Financial Year	139
-----	---	-----

COMMUNITY..... 142

CO1	Review of Community Advisory Committees	144
-----	---	-----

INFRASTRUCTURE..... 149

IN1	Request for In-Principle Support to Review Status of Lysaghts Road, Wedderburn.....	151
IN2	Section 355 Management Committees – 2016 Quadrennial Elections.....	153

Contents

NOTICE OF MOTION	157
NOM1 Notice of Motion No. 1 submitted by Cr Lowry on 24 November 2016 regarding Mining in the vicinity of Thirlmere Lakes	158
NOM2 Notice of Motion No. 1 submitted by Cr Banasik on 28 November 2016 regarding Flying Foxes in our Shire.....	159
NOM3 Notice of Motion No. 1 submitted by Cr Banasik on 28 November 2016 regarding Razorback Lookout	160
QUESTIONS FOR NEXT MEETING	161

Wollondilly Community Strategic Plan 2033

Council's format for reporting to our Ordinary Council Meetings will follow the:

1. Wollondilly Strategic Plan 2033 themes:

Looking after the **Community** | Accountable and Transparent **Governance** | Caring for the **Environment** | Building a strong local **Economy** | Management and Provision of **Infrastructure**

Under each of these themes are **Outcomes** – expressions of what we want to achieve in the long term which will be reflected in our reports.

2. Sustainability Principles (*reference page 10 of the CSP 2033*)

Equity | Precaution | Regeneration | Engagement | Sharing | Access | Participation | Rights | Governance

"Council will build the above principles into all facets of our organisation and everything we do."

1.

Community

Outcomes

1. Access to a range of activities, services and facilities.
2. A connected and supported community.

Strategies

CO1 - Community Building, Well-being and Identity

Deliver a range of community programmes, services, facilities and events which strengthen the capacity, well-being and cultural identity of our community.

CO2 - Working with Others

Work with other agencies and service providers to deliver community programmes, services and facilities which complement and enhance Council's service provision.

CO3 - Social Planning

Undertake strategic social planning and research regarding community needs and issues.

CO4 - Engagement and Communication

Implement excellence in our community engagement by listening to and responding to the needs and concerns of our residents.

Governance

Outcomes

1. Government, community and business talking and working together.
2. A Council that demonstrates good business management and ethical conduct.

Wollondilly Community Strategic Plan 2033

Strategies

- GO1 - Quality Employer
Provide an attractive employment choice for talented people.
- GO2 - Best Practice Governance
Be a leader in best practice local government governance.
- GO3 - Customer Service
Deliver responsive and helpful services to all our customers.
- GO4 - Advocacy
Advocate strongly for the interests of Wollondilly and its community.
- GO5 - Financial Sustainability
Maintain Council in a strong and sustainable financial position.
- GO6 - Resource Efficiency
Be efficient and effective in the use of Council resources and provide value for money in the delivery of services.
- GO7 - Information Management
Ensure best practice approach as to the delivery of quality information and technology services.
- GO8 - Corporate Image
Promote a positive representation of Council's corporate image.

Environment

Outcomes

1. Our local environment that is valued and protected.
2. A community that interacts with and cares for their environment.

Strategies

- EN1 - Biodiversity Resilience
Protect and conserve biodiversity and natural resources, including waterways, riparian lands and groundwater dependent ecosystems.
- EN2 - Growth Management
Apply best practice environmental principles to the management of future growth.
- EN3 - Development Assessment
Apply best practice environmental principles to the assessment of development and planning proposals.
- EN4 - Environmental Responsibility
Educate and promote legislative environmental responsibilities to the community.
- EN5 - Auditing, Monitoring and Enforcement
Undertake auditing, monitoring and regulatory enforcement to protect the environment and the health, safety and well-being of the community.
- EN6 - Waste Management
Improve waste minimisation and recycling practices in homes, workplaces, development sites and public places.
- EN7 - Sustainable Living
Educate, promote and support low consumption, sustainable lifestyles and lowering of the Shire's carbon footprint.

Economy

Outcomes

1. A strong local economy providing employment and other opportunities.

Strategies

- EC1 - Economic Development
Enhance economic development in Wollondilly Shire through innovative engagement and ongoing promotion of our strengths.
- EC2 - Planning for and Supporting Business
Strengthen and diversify Wollondilly's economic base by attracting and supporting the development of a diverse range of industries.
- EC3 - Manage Growth
Encourage and manage growth to ensure that it contributes to economic well-being.
- EC4 - Managing Development and Land Use
Manage and regulate land use and development in order to achieve a high quality built environment which contributes to economic well-being.
- EC5 - Protect Natural Resources
Protect natural resources so as to contribute to the Shire's economic well-being.

Infrastructure

Outcomes

1. Safe, maintained and effective infrastructure.
2. Access to a range of transport options.

Strategies

- IN1 - Maintain Road Network
Ensure that the road network is maintained to a standard that is achievable within the resources available.
- IN2 - Manage Road Network
Manage the road network to respond to community needs, growth in the Shire, improving road safety and improving transport choices.
- IN3 - Provision of Facilities
Provide a range of recreation and community facilities to meet the needs of the community.
- IN4 - Emergency Management
Plan for and assist in the community's response to emergencies such as bushfires and flooding.
- IN5 - Advocacy and Lobbying
Represent our community with regard to external services including energy, communications, water, waste management and resource recovery.

2.

Environmental Principles

EQUITY

We uphold the principles of intragenerational and intergenerational equity and fairness in how resources are distributed within this generation and between this and future generations.

PRECAUTION

We adopt the precautionary principle which is that actions that have the potential to harm our environment should not be undertaken if the consequences are uncertain and the science inconclusive.

REGENERATION

We work to protect and restore the earth's ecological integrity, biological diversity and natural processes.

ENGAGEMENT

We recognise that sustainability will happen faster if local communities become champions of sustainability and are involved in the decisions affecting sustainability.

SHARING

We will work with others to share resources and knowledge and to promote sustainability.

Social Justice Principles

EQUITY

We will strive for the fair distribution of resources with a particular emphasis on protecting those people who are considered vulnerable.

ACCESS

We will provide all people with opportunities to use relevant services and facilities regardless of their circumstances.

PARTICIPATION

We will encourage and provide opportunities for people to take part in decision making processes that impact on their quality of life.

RIGHTS

People should not be discriminated against and everyone is entitled to honesty, information and involvement.

GOVERNANCE

People deserve responsible governance and fair and accountable decision making.

Internal Committee/Advisory Group Councillor Representation Membership List 2016-2017

INTERNAL COMMITTEE OF COUNCIL WITH COUNCILLOR REPRESENTATION	COUNCILLOR REPRESENTATION 2016-17	RESPONSIBLE COUNCIL OFFICER	WHEN HELD AND VENUE
ORDINARY COUNCIL MEETING	Mayor Deputy Mayor Full Council	Manager Governance	Meetings held at 6.30pm, 3rd Monday of each month in the Council Chambers.
COMMUNITY FORUM	Mayor Deputy Mayor Full Council	Manager Governance	Meetings held at 6.30pm, 2nd Monday of each month in the Council Foyer - Administration Building. Community Safety on the Agenda quarterly – February, May, August and November.
AUDIT COMMITTEE	Mayor Cr Briggs	Manager Governance	Meetings held in office hours at the Council Chambers.
AUSTRALIA DAY COMMITTEE	Mayor Cr Hannan Cr Law Cr Landow Cr Banasik	Manager Community Outcomes	Meetings held at 6.00pm in the Council Boardroom as required.
COMMUNITY LEISURE CENTRE USERS ADVISORY GROUP	Cr Briggs	Manager Infrastructure Planning	Meetings held at 6.00pm, March & September in the Council Chambers.
GENERAL MANAGERS PERFORMANCE REVIEW COMMITTEE	Mayor Cr Hannan Cr Law Cr Gould Cr Khan Cr Landow	Manager Executive Services	Facilitator LG NSW. Meetings held late January/early February & late July.
LOCAL TRAFFIC COMMITTEE	Cr Khan Cr Briggs (alt)	Manager Infrastructure Planning	Meetings held at 2.00pm on the third Wednesday monthly, except February, May and August meetings are held on the 4 th Wednesday at 10.00am in the Council Boardroom.
PICTON FLOOD PLAIN RISK MANAGEMENT COMMITTEE	Cr Khan Cr Deeth	Manager Infrastructure Planning	As required.

External Committee/Advisory Group Councillor Representation Membership List 2016-2017

EXTERNAL COUNCIL COMMITTEES	COUNCILLOR REPRESENTATION 2016-17	RESPONSIBLE COUNCIL OFFICER	WHEN HELD AND VENUE
ASSOCIATION OF MINING RELATED COUNCILS COMBINED COUNCILS SOUTHERN MINING LIAISON COMMITTEE	Cr Khan Cr M Banasik Cr Lowry (2 Cr votes + alt)	Director Infrastructure & Environment	Meetings held February, May, August and November at various venues.
BORAL CEMENT – MALDON PLANT – COMMUNITY LIAISON COMMITTEE	Cr Law	Manager Infrastructure Planning	Meetings held quarterly at various locations.
CAMPBELLTOWN ARTS CENTRE CULTURAL PRECINCT ADVISORY GROUP	Cr Banasik	Manager Community Outcomes	Meetings held quarterly at Campbelltown Arts Centre.
COUNTRY PUBLIC LIBRARIES ASSOCIATION (SOUTH EASTERN ZONE)	Cr Banasik Cr Hannan (alt)	Manager Community Outcomes	Meetings held quarterly at rotating host Council locations.
GEORGES RIVER COMBINED COUNCIL COMMITTEE INC	Cr Banasik	Manager Environmental Services	Meetings held at 7.00pm, 4th Thursday of every second month at various venues.
GREATER SYDNEY LOCAL LAND SERVICES LOCAL GOVERNMENT ADVISORY GROUP	Cr Briggs	Manager Environmental Services	Quarterly
ILLAWARRA COAL COMMUNITY CONSULTATIVE COMMITTEE	Cr Lowry	Manager Environmental Services	Meetings held 4.30pm, last Tuesday of every second month.
LACHLAN REGIONAL TRANSPORT COMMITTEE	Cr Hannan	Director Planning	Meetings held quarterly.

External Committee/Advisory Group Councillor Representation Membership List 2016-2017

EXTERNAL COUNCIL COMMITTEES	COUNCILLOR REPRESENTATION 2016-17	RESPONSIBLE COUNCIL OFFICER	WHEN HELD AND VENUE
LOCAL EMERGENCY MANAGEMENT COMMITTEE	General Manager Luke Johnson	General Manger & Manager Works	Meetings held 6 times per year at various venues.
MACARTHUR REGIONAL ORGANISATION OF COUNCILS (MACROC)	Mayor – President Cr Hannan Cr Khan Cr Banasik Cr Deeth (Mayor + 3 Crs next 2yrs – Wollondilly President)	General Manager	Meetings held 7.00pm, on Wednesdays quarterly at Campbelltown, Camden & Wollondilly Councils.
MG MY GATEWAY	Manager Executive Services Matt Toro	Manager Executive Services	Meetings held monthly at Centric, Park Central.
QUEEN VICTORIA SUPPORT GROUP	Cr Law	Manager Community Outcomes	As required.
SOUTHERN TABLELANDS REGIONAL ARTS ADVISORY GROUP	Cr Banasik	Manager Community Outcomes	Meetings held quarterly at Goulburn Council offices.
SOUTH WEST SYDNEY ACADEMY OF SPORT ADVISORY GROUP	Cr Briggs	Manager Infrastructure Planning	Board Meetings held quarterly in Wollondilly, Campbelltown, Camden & Liverpool. Finance Meetings - Bi-monthly UWS.
SOUTH WEST REGIONAL WEEDS COMMITTEE	Cr Law	Manager Environmental Services	Meetings held at 9.00am, 1st Wednesday of March, June, September and December. Various locations South West Sydney.
SYDNEY PERI URBAN NETWORK	Executive Director Ally Dench	Executive Director Community Services and Corporate Support	Meetings held as required at various locations.
SYDNEY SOUTH WEST PLANNING PANEL	Mayor Cr Gould (alt) General Manager (Peter Wright alt. for GM)	Manager Planning	As decided by the Panel Chair.

External Committee/Advisory Group Councillor Representation Membership List 2016-2017

EXTERNAL COUNCIL COMMITTEES	COUNCILLOR REPRESENTATION 2016-17	RESPONSIBLE COUNCIL OFFICER	WHEN HELD AND VENUE
TAHMOOR COLLIERY COMMUNITY CONSULTATIVE COMMITTEE	Cr Khan	Manager Environmental Services	Meets quarterly as required at Tahmoor Colliery.
WATER NSW LOCAL GOVERNMENT REFERENCE PANEL	Cr Banasik Cr Gould (alt)	Manager Environmental Services	Meetings held at 12.00pm, 1st Monday quarterly.
WOLLONDILLY DISTRICT LIAISON COMMITTEE (SLA WITH RFS)	Cr Briggs Cr Khan	Manager Works	Quarterly.
WOLLONDILLY/ WINGECARRIBEE - BUSH FIRE MANAGEMENT COMMITTEE	Mayor Cr Briggs (12 month rotations of chair with Wingecarribee)	Manager Environmental Services	Meetings held at 12.30pm, 1st Wednesday quarterly, Venue Bridge Street, Picton.
YERRANDERIE MANAGEMENT COMMITTEE	Cr Lowry Cr Gould	Manager Environmental Services	Meetings held at 6.30pm, 1st Thursday March, June, September and December at The Heritage Centre, The Oaks. 1st Saturday of alternate months - all day Yerranderie.