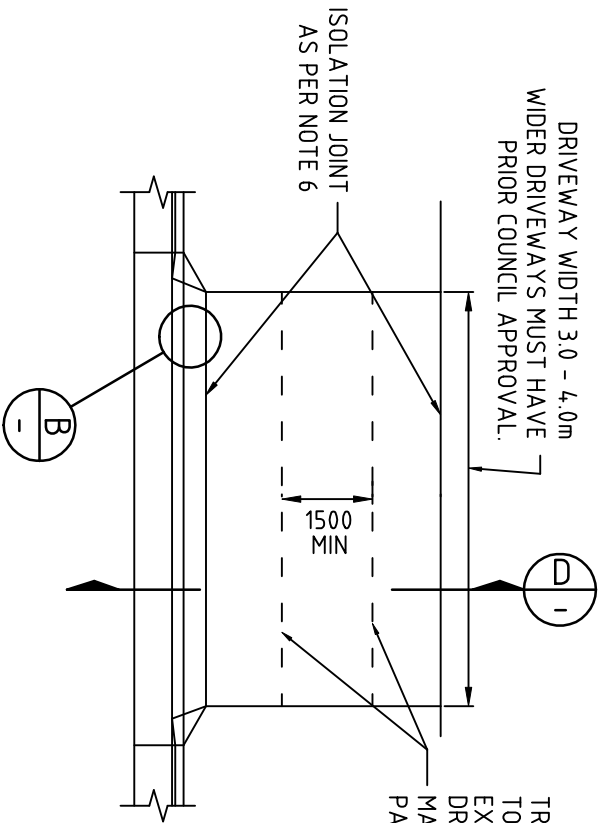
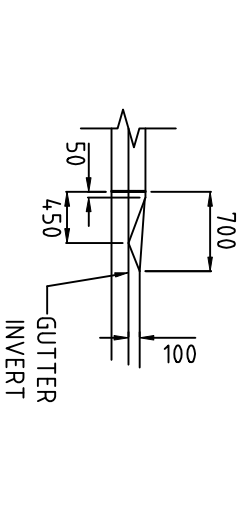
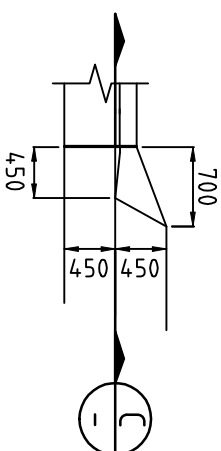


DRIVEWAY WIDTH 3.0 - 4.0m  
WIDER DRIVEWAYS MUST HAVE  
PRIOR COUNCIL APPROVAL.

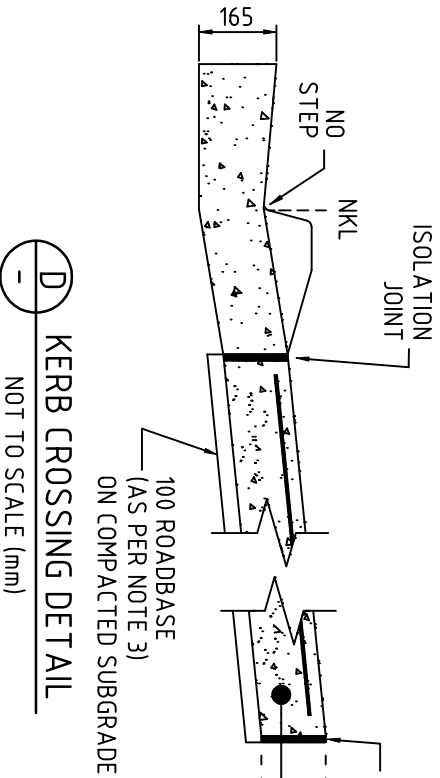


TRANSVERSE CONTRACTION JOINTS TO LINE UP WITH FOOTPATH. EXISTING FOOTPATHS BUILT TO DRIVEWAY STANDARD (NEW SUBDIVISIONS) MAY REMAIN AND DRIVEWAY ADJOIN PATH WITH ISOLATION JOINTS.



NOTES:

- 1.DRIVEWAY CROSSING INSPECTIONS ARE SUBJECT TO AN INSPECTION FEE. FEES TO BE PAID PRIOR TO INSPECTION.
- 2.MINIMUM COMPRESSIVE STRENGTH OF CONCRETE AT 28 DAYS WILL BE 25 MPa. CONCRETE SLUMP 65-75mm.
- 3.SUB-BASE MATERIAL SHALL BE COMPACTED ROAD BASE DGB20 OR APPROVED EQUIVALENT.
- 4.PERMIT TO BE OBTAINED FROM COUNCIL PRIOR TO COMMENCEMENT OF ANY WORKS.
- 5.INSPECTION IS REQUIRED WHEN FORMWORK AND REINFORCING STEEL US IN FINAL POSITION PRIOR TO CONCRETE PLACEMENT.
- 6.APPROVED BITUMINOUS JOINTING MATERIAL SHALL BE PLACED TO SEPARATE ALL NEW AND OLD CONCRETE EDGES.
- 7.ALL EXPOSED CONCRETE EDGED TO BE ROUNDED TO 10mm RADIUS UNLESS NOTED OTHERWISE.
- 8.CROSSING WIDTH (W) TO BE DETERMINED AT DEVELOPMENT APPLICATION STAGE.



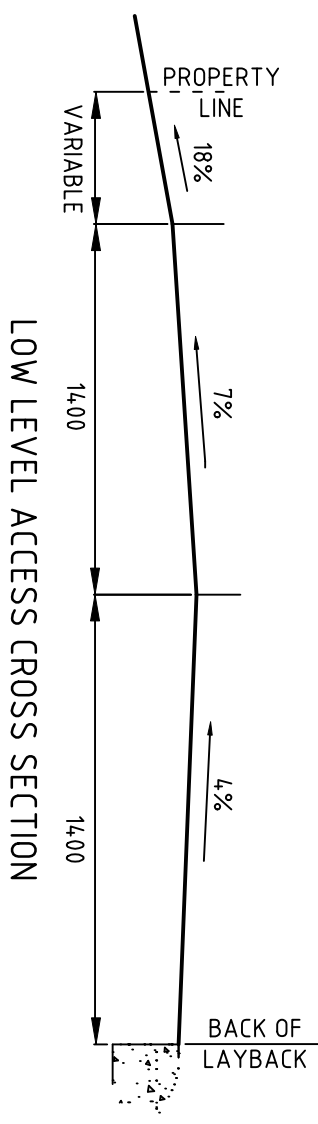
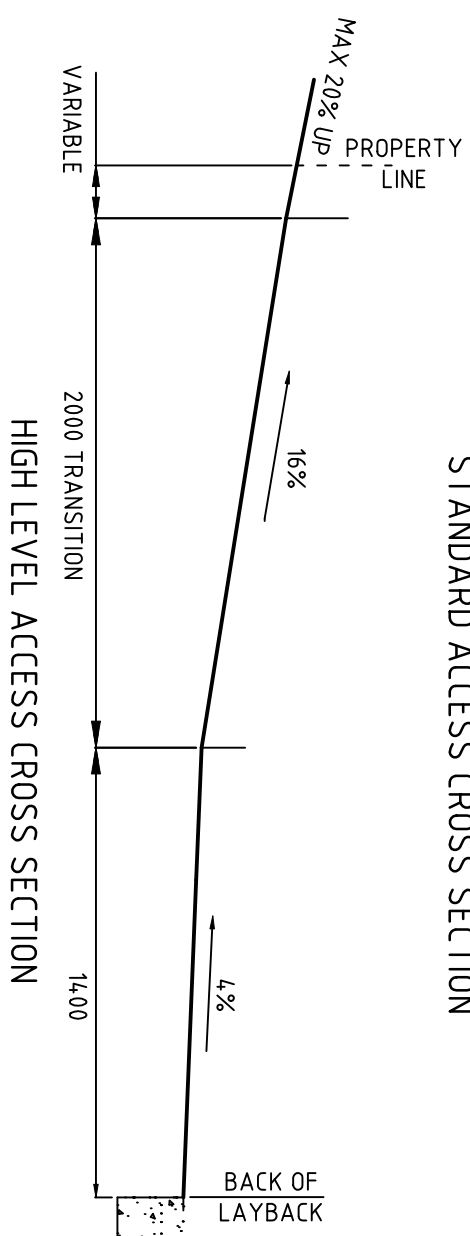
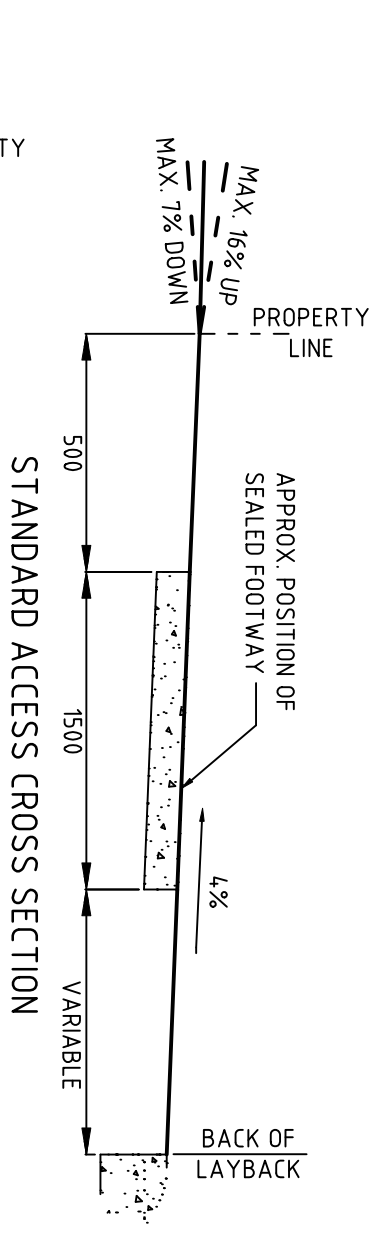
RESIDENTIAL DRIVEWAYS 125 THICK 20MPa CONCRETE REINFORCED WITH SINGLE LAYER SL72 MESH 40 TOP COVER.



<b>DRAWN</b>	<b>SCALE</b>
O.S.	1:100 @ A4
<b>DATE:</b> 12/01/16	

RESIDENTIAL  
VEHICULAR AND FOOTWAY CROSSING

<b>APPROVED BY</b>	<b>DRAWING NO.</b>
M.NELSON	W.S.C.D1.8
<b>DATE:</b> 01.03.2016	



VEHICULAR ACCESS PROFILES

**DRAWN**  
O.S.  
DATE: 12/01/16

**APPROVED BY**  
M.NELSON  
DATE: 01.03.2016

**SCALE**  
NO SCALE @ A4

**DRAWING NO.**  
W.S.C.D.11.11  
**SHEET 1 OF 1**