



TRAX

TO THE
FUTURE

A RAIL SYMPOSIUM

“Wollondilly Shire is on the brink of many big changes; as the elected leader of Wollondilly I want to make sure we leave a prosperous legacy for future generations and to do this we need more rail infrastructure. Improved rail infrastructure in Wollondilly could open possibilities not only locally, but for the rest of South Western Sydney, the Illawarra and across the State. Let’s work together to make Trax to the Future!”

- Mayor Judith Hannan, Wollondilly Shire Council

A handwritten signature in white ink, reading "Jay Kennan". The signature is written in a cursive, flowing style.

Western City



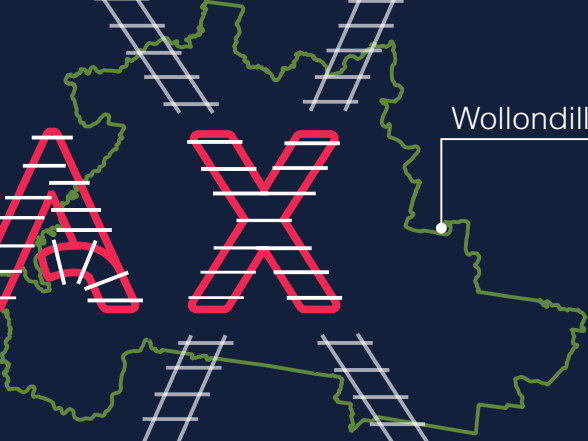
Sydney City



T R A X

**TO THE
FUTURE**

Wollondilly



Illawarra



Canberra





TRAX

TO THE FUTURE

A RAIL SYMPOSIUM

When compared to the Greater Sydney Region, Wollondilly Shire residents travel the furthest and spend the greatest amount of time on their daily commuting.

Their public transport options are extremely limited so they rely heavily on private vehicles to travel significant distances to jobs, schooling and services. This transport isolation has numerous costs:

- Social exclusion and time-poor lifestyles
- Environmental impacts
- Economic inefficiency
- Reduced public health

These problems extend beyond Wollondilly of course, as many parts of Western Sydney are also unfortunately characterised by public transport paucity and a long commute on congested roads to distant jobs.

With a forecast of major housing growth, including a proposed new town of 16,500 home sites at Wilton, Wollondilly Shire is at a watershed point regarding its rail services future. If this growth proceeds with no paradigm shift towards rail, thousands more will be consigned to a worsening future of car-commuting. The alternative is to strive for improved rail services south of Macarthur so as to connect Wollondilly and the new town of Wilton to major destinations - Sydney CBD, Parramatta, Campbelltown, Liverpool, the Western Sydney Airport and the Illawarra.

At a broader level, Wollondilly Shire (and more specifically the Wilton Priority Growth Area) is strategically located to play a pivotal role in the future rail network of the region and the State. The proposed South West Illawarra Rail link, which aims to connect burgeoning western Sydney to the Illawarra, passes through Wilton. And any future High Speed Rail between Sydney and Canberra (or Melbourne) is also likely to pass through Wilton.

Trax to the Future aims to highlight the transformative potential of rail, not only for Wollondilly but for South Western Sydney, the Illawarra and across the State. Key thinkers, government representatives and industry stakeholders will come together to discuss and raise awareness of the importance of rail as a critical element of our future transport infrastructure framework.

The symposium will consider a number of key rail projects with a focus on Wollondilly and its neighbouring regions – the South West Illawarra Rail Link (“SWIRL”), the rail link to Wilton New Town, the High Speed Rail proposal, and the North South Rail concept for Western Sydney. Panel discussions and presentations will explore the thinking behind these projects, their interrelationship, their status, and how best to move forward.



TRAX TO THE FUTURE

A RAIL SYMPOSIUM

AGENDA

3.00 ^{pm}	Welcome	Luke Johnson <i>General Manager Wollondilly Shire Council</i>
3.10 ^{pm}	Rail in Wollondilly Prospects and Possibilities	Mayor Judith Hannan <i>Wollondilly Shire Council</i>
3.40 ^{pm}	Rail is back in the 21st Century	The Hon. Timothy Fischer AC
4.10 ^{pm}	Opportunities for the Western City	Geoff Roberts <i>Deputy Chief Commissioner Greater Sydney Commission</i>
4.40 ^{pm}	Break	
4.55 ^{pm}	Western Sydney Jobs Slide	Dr Phillip O'Neill <i>Director Centre for Western Sydney</i>
5.25 ^{pm}	South West Illawarra Rail Link	Chris Lamont <i>Executive Director Illawarra Business Chamber</i>
5.55 ^{pm}	Panel Discussion Trax to the Future: Making it happen	Mayor Judith Hannan, Geoff Roberts, Dr Phillip O'Neill, Chris Lamont and Jeff Lawrence <i>(Campbelltown City Council)</i>
6.30 ^{pm}	Thank you	Mayor Judith Hannan <i>Wollondilly Shire Council</i>

TRAX

TO THE
FUTURE

A RAIL SYMPOSIUM



THE HON.
TIMOTHY ANDREW FISCHER

AC

Rail is back in the 21st Century

The Hon. Timothy Andrew Fischer was born at Lockhart in 1946 and educated at Xavier College in Melbourne.

He was conscripted to the Australian Army in 1966 and served in the Vietnam War. He entered politics in 1971 and became Deputy Prime Minister in 1996, Ambassador to the Holy See in 2008 and is now a successful book author.

Tim is a keen rail advocate and in 2010 he was the catalyst in creating the Caritas Express from the Popes private platform, a version now runs every Saturday from the Vatican to Castel Gandolfo.

The former Deputy PM will talk about how rail is back in business in the 21st century, and how to create a Picton CBD super commuter service.

TRAX

TO THE
FUTURE

A RAIL SYMPOSIUM



GEOFF ROBERTS

Deputy Chief Commissioner, Economic
Commissioner and Interim District Commission
Western City, Greater Sydney Commission

Opportunities for the Western City

Geoff Roberts has 35 years' experience in Australia and internationally as a specialist in city strategy, governance and leadership and is the Deputy Chief Commissioner, Economics Commissioner and Interim District Commission - Western City at the Greater Sydney Commission.

Geoff also holds an Adjunct Professor position in the City Futures Research Centre at the University of NSW, and is a highly regarded strategic advisor at a number of public and private sector organisations.

Geoff has a deep history of working in large metropolitan scale land use and infrastructure projects and will talk about opportunities for the Western City for public transport infrastructure and in particular rail.

The logo for the TRAX symposium is located in the top left corner. It features the word "TRAX" in a stylized, red, outlined font. Below it, the words "TO THE FUTURE" are written in a bold, white, sans-serif font. At the bottom of the logo, the text "A RAIL SYMPOSIUM" is written in a smaller, red, sans-serif font. The entire logo is set against a dark blue background with a red border on the left and bottom sides.

TRAX

TO THE
FUTURE

A RAIL SYMPOSIUM



PROFESSOR
PHILLIP O'NEILL

Director, Centre for Western Sydney

Western Sydney Jobs Slide

Professor Phillip O'Neill is the Director of the Centre for Western Sydney at Western Sydney University.

The Centre is a primary driver of policy-relevant research for the Western Sydney region.

Phillip is a widely published international scholar with expertise relating to economic and industrial change, especially in large cities. His most recent research examines the difficulties of the private financing of urban infrastructure.

He has held visiting research fellowships at Bristol University, the University of Massachusetts, the National University of Singapore, the University of Oxford, and most recently at the University College London.

Phillip writes regular columns for Fairfax regional and community press.

Professor O'Neill will talk about the growing population in Western Sydney and the impacts this will have on transport infrastructure.

TRAX

TO THE
FUTURE

A RAIL SYMPOSIUM



CHRIS LAMONT

Executive Director,
Illawarra Business Chamber

South West Illawarra Rail Link (SWIRL)

Chris Lamont has extensive experience in industry associations, government and the private sector.

He has been responsible for the delivery of multi-billion dollar Commonwealth housing and State Government infrastructure initiatives. He has also served as Chief of Staff and Senior Ministerial Adviser in the Australian Government.

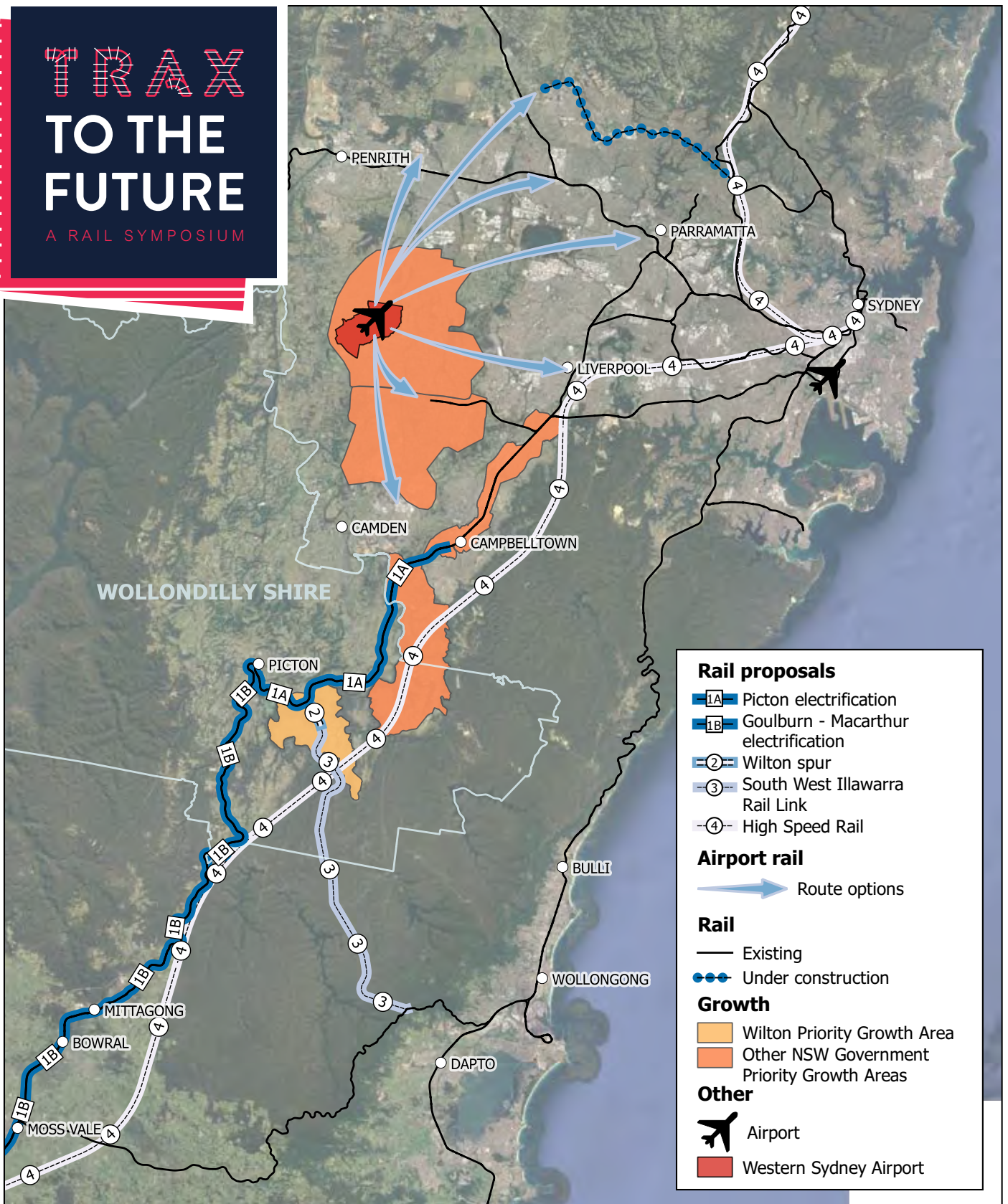
As Executive Director for Illawarra First and the Illawarra Business Chamber, he is focused on enhancing regional economic development and employment opportunities through improving transport connectivity with Greater Sydney and targeted regional investment.

Chris will talk about the case for the construction of the South West Illawarra Rail Link (SWIRL) and the importance of improved rail connectivity for the region.

TRAX

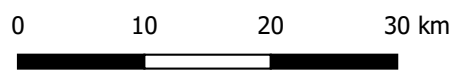
TO THE FUTURE

A RAIL SYMPOSIUM

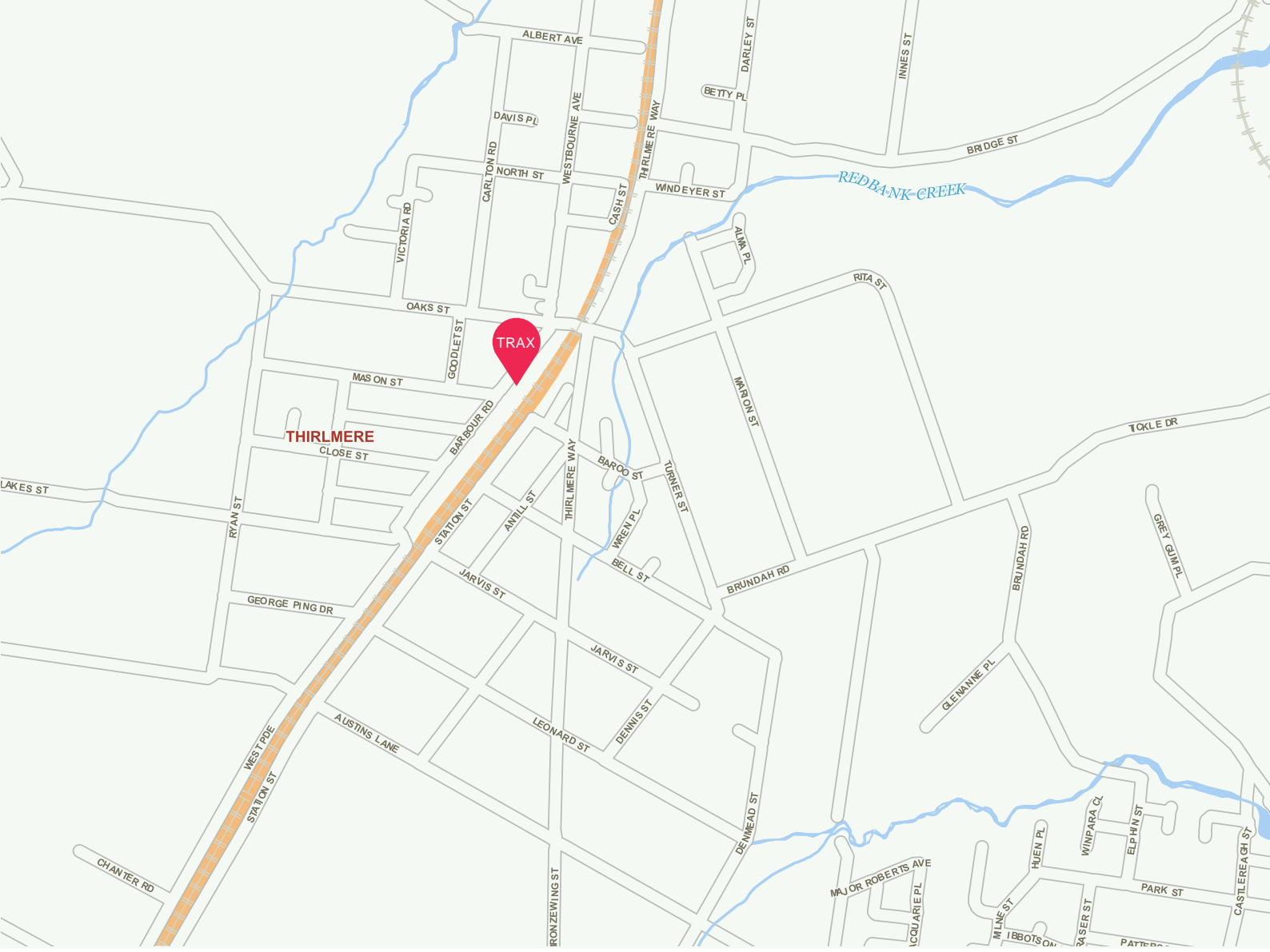


Rail Connectivity Opportunities for South-West Sydney

Wollondilly Shire Council
 PO Box 21
 PICTON NSW 2571
 Ph: (02) 4677 1100
 Fax: (02) 4677 2339
 Web: www.wollondilly.nsw.gov.au



© Wollondilly Shire Council
 © LPI Department of Finance and Services, Panorama Avenue, Bathurst, 2795.
 www.lpi.nsw.gov.au
 While every care is taken to ensure the accuracy of this product, Wollondilly Shire Council and the Local / State / Federal Government departments and Non-Government organisations whom supply datasets, make no representations or warranties about its accuracy, reliability, completeness or suitability for any particular purpose and disclaims all responsibility and all liability (including without limitation, liability in negligence) for all expenses, losses, damages (including indirect or consequential damage) and costs which you might incur as a result of the product being inaccurate or incomplete in any way and for any reason.



How to get there

**The NSW Rail Museum is located at
10 Barbour Road, Thirlmere.**

If you are travelling by car the NSW Rail Museum is approximately 45 minutes drive from Wollongong, 1 hour and 15 minutes drive from Sydney and 2 hours and 15 minutes drive from Canberra.



Wollondilly
Shire Council

PO Box 21, Picton NSW, 2571 AUSTRALIA

E council@wollondilly.nsw.gov.au | **P** 02 4677 1100 | **F** 02 4677 2339

www.wollondilly.nsw.gov.au

Published by Wollondilly Shire Council 2017