



# ASSET MAPPING & COMMUNITY PROFILES PROJECT

THE OAKS | BELIMBLA PARK | GLENMORE

2023

---



# Acknowledgement<sup>\*</sup>

Wollondilly Shire Council acknowledges the traditional custodians of the land in Wollondilly, the Dharawal and Gundungurra peoples.

We acknowledge the living culture and spiritual connections to the land for the Dharawal and Gundungurra people and all Aboriginal Nation Groups that may have connections to the area; and that Wollondilly is remarkably placed as the intersection of many tribal lands.

We recognise the traditional Custodians who have occupied and cared for this Country over countless generations and celebrate their continuing contributions to the Shire.

We also acknowledge and remember the Dharawal and Gundungurra peoples who were killed in the Appin Massacre on 17 April 1816.

*\*We acknowledge our continuing collaboration with the Tharawal Local Aboriginal Land Council*

# CONTENTS

<b>Acknowledgement of Country</b>	<b>3</b>
<b>About Wollondilly Shire</b>	<b>7</b>
<b>Population Data</b>	<b>9</b>
<b>Wollondilly Shire Map</b>	<b>10</b>
<b>Emergency Services</b>	<b>13</b>
<b>Council Assets</b>	<b>13</b>
<b>Public Transport</b>	<b>14</b>
<b>Medical Facilities &amp; Pharmacies</b>	<b>14</b>
<b>Neighbourhood Safer Spaces</b>	<b>15</b>
<b>About The Oaks, Belimbla Park &amp; Glenmore</b>	<b>16</b>
<b>Population Data</b>	<b>19</b>
<b>Area Map</b>	<b>21</b>
<b>Areas &amp; Information</b>	<b>22</b>
<b>Disaster Services</b>	<b>24</b>
<b>Schools</b>	<b>24</b>
<b>Childcare Services &amp; Preschools</b>	<b>25</b>
<b>Sports Associations</b>	<b>26</b>
<b>Community Associations</b>	<b>26</b>
<b>Prominent Businesses</b>	<b>27</b>
<b>Private Animal Boarding Facilities</b>	<b>28</b>
<b>Council Assets</b>	<b>28</b>
<b>Neighbourhood Safer Spaces</b>	<b>28</b>
<b>Online Facebook Community Forums &amp; Pages</b>	<b>29</b>

A map of Wollondilly Shire, Australia, showing various towns and villages. The map is overlaid on a green-to-teal gradient background. The towns labeled include Wallactia, Warragamba, Silverdale, Werombi, Theresa Park, Orangeville, Brownlow Hill, Camden Park, Mowbray Park, Razorback, Menangle, Douglas Park, Appin, Pheasants Nest, Wilton, Bargo, and Yanderra. The title 'WOLLONDILLY SHIRE' is written in large, white, sans-serif capital letters across the top half of the map.

# WOLLONDILLY SHIRE

## WOLLONDILLY

The Wollondilly Shire Local Government Area (LGA) has many unique towns and villages, ranging from Warragamba in the north to Yanderra in the south. The Shire is a large rural area that offers beautiful landscapes and has a strong sense of community spirit.

In 2019/20, the community of Wollondilly was significantly impacted by the Green Wattle Creek bushfire, resulting in the loss of private homes, wildlife, facilities, and hectares of National Park bushland. Following this tragic event, the community faced additional challenges with storm events and flood damage, exacerbating the strain on the community.

In consultation with residents, response agencies, and key stakeholders, Wollondilly Shire Council developed the Activate Wollondilly 2021: Long-Term Recovery and Resilience Plan. This plan aims to assist the community through recovery and resilience building, and it identifies key strategies to support and guide the recovery process.

Asset Mapping was identified as a key strategy to support the implementation of the plan. This document is designed to highlight and inform the community about the facilities and groups available in their local area that can provide help in times of need.

**Please Note:**

- It is the responsibility of the RFS to identify and communicate evacuation points accordingly during an emergency. These points are often Community Assets and Council will work with the RFS to support accurate communication to the community.
- Evacuation Routes can change during an emergency. It is important to seek current RFS information before taking action.

# Population Data

## WOLLONDILLY



A population of  
**54,176** people  
in total

**27,032**  
Male (50.1%)



**26,931**  
Female (49.9%)



**2,364**  
Indigenous (4.4%)



**5,552**  
Seniors (70+ Years)  
(10.3%)



**3,165**  
Employed  
(97.6%)

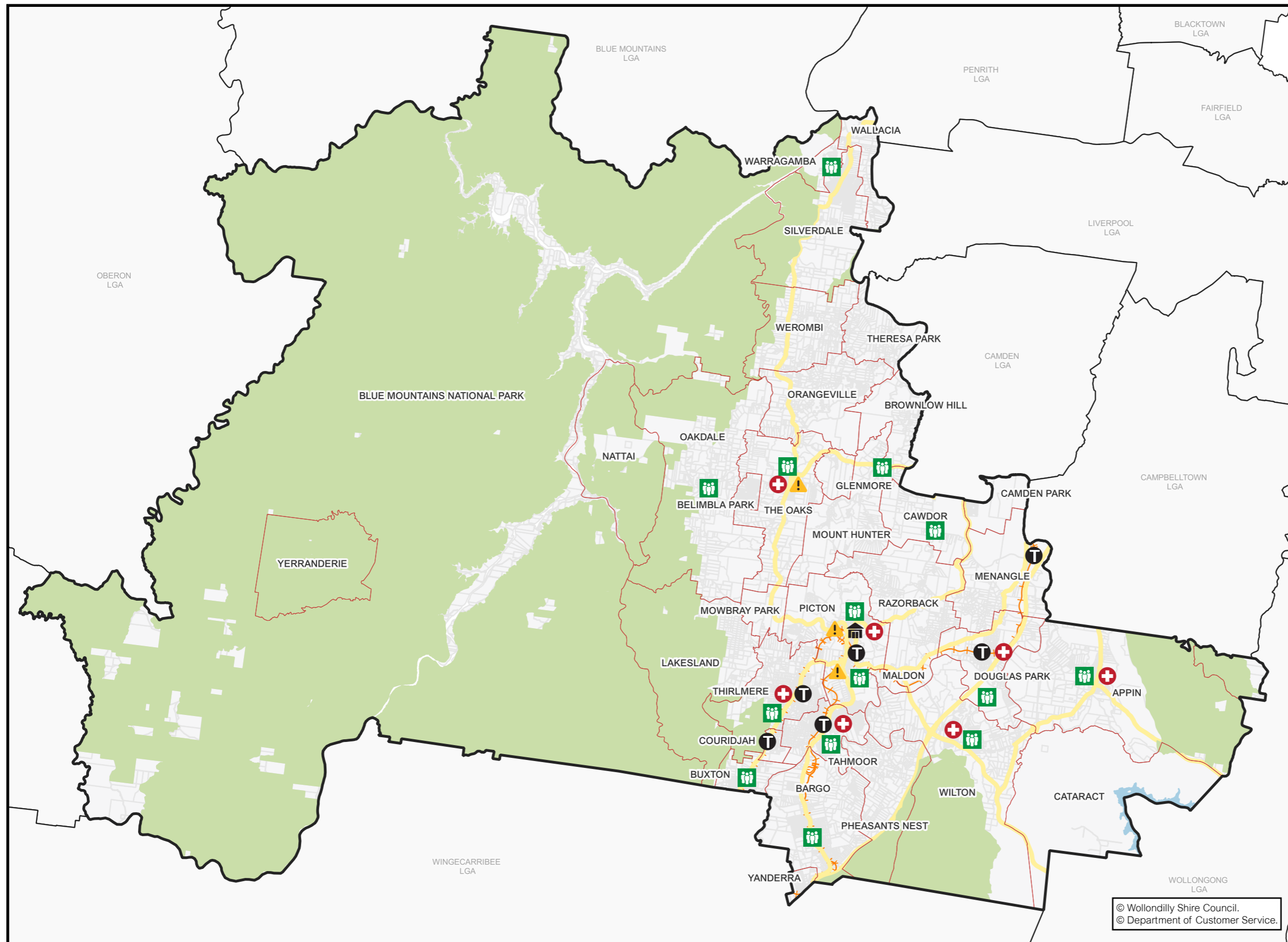


**5,992**  
Born Overseas  
(11.1%)








**322**  
Non-English  
Speaking (0.6%)

# WOLLONDILLY SHIRE MAP



**Legend**

-  Disaster/Emergency Services
-  Council Assets
-  Public Transport
-  Medical Facilities & Pharmacies
-  Neighbourhood Safer Spaces

© Wollondilly Shire Council.  
© Department of Customer Service.



EMERGENCY SERVICES	
Area	Information
Wollondilly	<p><b>Rural Fire Service - Bushfire Information Line</b> - Ph: 1800 679 737</p> <p><b>Rural Fire Service Wollondilly District Office</b> - Ph: (02) 4677 7000</p> <p><b>Wollondilly State Emergency Service (SES)</b>            65 Bridge Street, Picton, 2571            Ph: 132 500            Fb: <a href="https://www.facebook.com/NSWSESWDY">https://www.facebook.com/NSWSESWDY</a></p> <p><b>Picton Police Station</b>            86 Argyle St, Picton NSW 2571            Ph: (02) 4677 8999</p> <p><b>The Oaks Police Station</b>            57 Merlin St, The Oaks NSW 2570            Ph: (02) 4657 1142</p> <p><b>Picton Ambulance Station</b>            79/81 Old Hume Hwy, Picton NSW 2571</p> <p><b>Camden PAC Office</b>            278 Camden Valley Way            NARELLAN 2567            Ph: (02) 4632 4499</p> <p><b>Warragamba Police Station</b>            4 Third St, Warragamba NSW 2752            Ph: (02) 4774 1105</p>

COUNCIL ASSETS	
Area	Information
Wollondilly	<p><b>The Wollondilly Shire Hall</b>            44-60 Menangle Street, Picton NSW 2571            Ph: (02) 4677 1100            E: <a href="mailto:council@wollondilly.nsw.gov.au">council@wollondilly.nsw.gov.au</a></p> <p><b>Wollondilly Library</b>            42 Menangle Street, Picton NSW 2571            Ph: (02) 4677 8300            E: <a href="mailto:library@wollondilly.nsw.gov.au">library@wollondilly.nsw.gov.au</a>            Fb: <a href="https://www.facebook.com/WollondillyLibrary">https://www.facebook.com/WollondillyLibrary</a>            W: <a href="http://www.library.wollondilly.nsw.gov.au/home">http://www.library.wollondilly.nsw.gov.au/home</a></p> <p><b>Wollondilly Shire Council</b>            Frank McKay Building, 62-64 Menangle Street, Picton NSW 2571            Ph: (02) 4677 1100            E: <a href="mailto:council@wollondilly.nsw.gov.au">council@wollondilly.nsw.gov.au</a>            Fb: <a href="https://www.facebook.com/wollondilly">https://www.facebook.com/wollondilly</a>            W: <a href="https://www.wollondilly.nsw.gov.au">https://www.wollondilly.nsw.gov.au</a></p>

PUBLIC TRANSPORT	
Area	Information
Wollondilly	<b>Train Stations:</b> Menangle Park Douglas Park Picton Thirlmere Tahmoor Bargo Yerrinbool

MEDICAL FACILITIES & PHARMACIES	
Area	Information
Wollondilly	<b>Wollondilly Medical Centre</b> Centre, Shop 16/117 Remembrance Driveway, Tahmoor NSW 2573 Ph: (02) 4607 2905 W: hotdoc.com.au  <b>Wollondilly Specialist Medical Centre</b> Shop 15, Tahmoor Shopping Village (next to Foodworks), Cnr Remembrance Dr & Bronzewing St, Tahmoor NSW 2573 Ph: (02) 4683 0070  <b>Thirlmere Pharmacy</b> 29 Oak St, Thirlmere Ph: 4683 2866  <b>Wilton Pharmacy</b> 1 Greenbridge Drive, Wilton Ph: (02) 4630 9333  <b>Priceline Pharmacy Tahmoor</b> Shop 12 Tahmoor Town Centre, 117 Remembrance Driveway, Tahmoor NSW 2573 Ph: (02) 4681 8713  <b>Picton Discount Drug Store</b> Shop T25-T27/9 Margaret St, Picton NSW 2571 Ph: 4677 1294  <b>Pharmacy 4 Less Tahmoor</b> Tahmoor Shopping Village 5&6, 161-173 Remembrance Driveway, Tahmoor NSW 2573 Ph: (02) 4681 0224  <b>The Oaks Village Pharmacy</b> 67 John St, The Oaks NSW 2570 Ph: (02) 4657 1387  <b>Appin Compounding Pharmacy</b> Shop 2/75 Appin Rd, Appin NSW 2560 Ph: (02) 4631 1488  <b>Douglas Park Pharmacy</b> Shop 2A/147 Camden Rd, Douglas Park NSW 2569 Ph: (02) 4632 8554

NEIGHBOURHOOD SAFER SPACES	
Area	Information
Wollondilly	<b>St Mary's Towers</b> 415 Douglas Park Drive, Douglas Park  <b>Wilton Community Centre</b> Broughton Street, Wilton  <b>Main Street Appin</b> Appin Road, Appin  <b>Land adjacent to Bargo Hotel</b> 225-227 Great Southern Road, Bargo  <b>Bargo Shops</b> Remembrance Drive, Bargo  <b>Hall within Bargo Showground</b> Radnor Road, Bargo  <b>Buxton Fire Shed</b> West Parade, Buxton  <b>The Oaks Public School</b> John Street, The Oaks  <b>The Oaks Hall</b> Russell Street, The Oaks  <b>Warragamba Public School Hall</b> Weir Road, Warragamba  <b>Oakdale Shops</b> Burragorang Road, Oakdale  <b>Oakdale Community Hall</b> Cnr Egans Road and Burragorang Road, Oakdale  <b>Mt Hunter Community Hall</b> Corner of Burragorang Rd and Clyde Place, Mt Hunter  <b>Cawdor Public School</b> 685 Cawdor Road, Cawdor  <b>Picton High School</b> 480 Argyle Street, Picton  <b>Picton Bowling Club</b> 55-56 Argyle Street, Picton  <b>Carpark between Coles &amp; Council Admin Building</b> Margaret Street, Picton  <b>Tahmoor Town Centre Carpark</b> Cnr of Thirlmere Way and Remembrance Drive, Tahmoor  <b>Wollondilly Youth Hub/ Community Centre</b> Harper Close, Tahmoor  <b>Thirlmere Public School</b> Oaks Street, Thirlmere  <b>Thirlmere Memorial Park</b> Oaks Street, Thirlmere





# THE OAKS BELIMBLA PARK GLENMORE

Nestled at the crossroads of Warragamba, Picton, and Camden, The Oaks is a charming small village that cherishes its heritage and sportsmanship. The strong community bonds formed through these associations foster essential social connections among residents. The Oaks has managed to preserve its allure as an attractive semi-rural district.

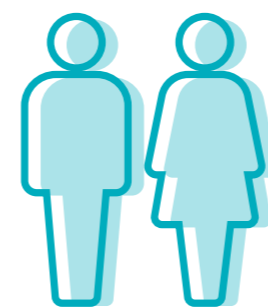
*Information contained in this document is derived from Wollondilly Shire Council's Community Strengths and Resources Questionnaire 2023 and is a documentation of community thoughts and opinions. Statistical data is sourced from id.community and is supported by ABS Census data 2021. <https://profile.id.com.au/wollondilly/about?WebID=220>*

# Population Data

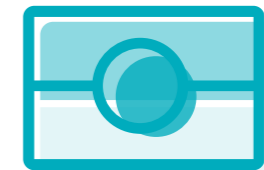
THE OAKS | BELIMBLA PARK | GLENMORE



A population of  
**3,677** people  
in total



**1,856**  
Male (50.6%)  
**1,813**  
Female (49.4%)



**120**  
Indigenous  
(3.3%)



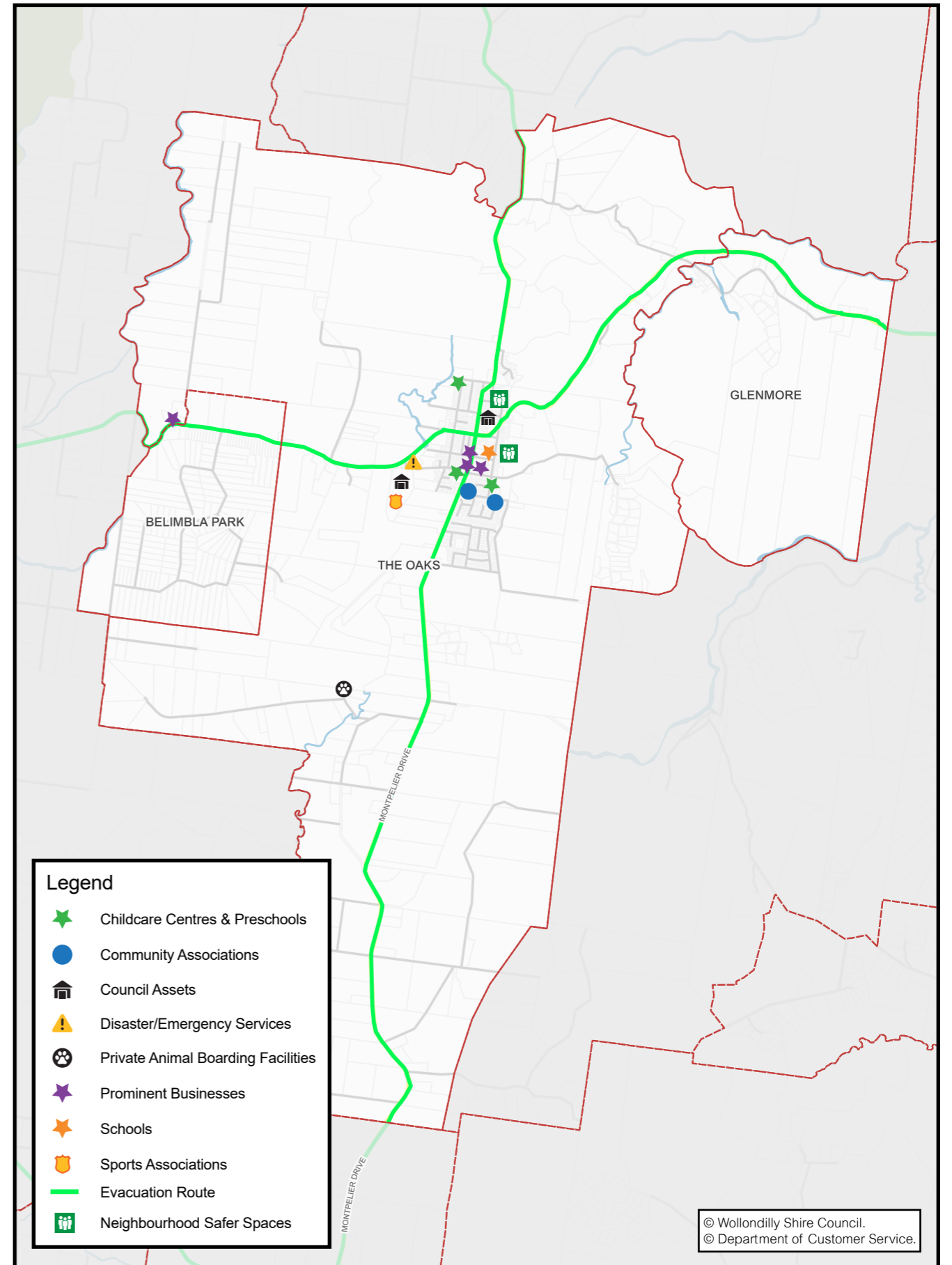
**362**  
Seniors  
(>70 Years)  
(9.9%)



**384**  
Born Overseas  
(10.4%)



**7**  
Non-English  
Speaking  
(0.2%)



# AREAS & INFORMATION

DISASTER SERVICES	
Area	Information
<b>All Areas</b>	<p><b>Rural Fire Service - Bushfire Information Line</b> - Ph: 1800 679 737</p> <p><b>Rural Fire Service Wollondilly District Office</b> - Ph: 4677 7000</p> <p><b>Wollondilly State Emergency Service (SES)</b>            65 Bridge Street, Picton, 2571            Ph: 132 500            Fb: <a href="https://www.facebook.com/NSWSESWDY">https://www.facebook.com/NSWSESWDY</a></p>
<b>The Oaks</b>	<p><b>The Oaks Rural Fire Brigade</b>            33 McIntosh Street, The Oaks NSW 2570            Ph: (02) 4657 1980            E: <a href="mailto:Jeremy.wilson@capitalinsight.com.au">Jeremy.wilson@capitalinsight.com.au</a>            Fb: <a href="https://www.facebook.com/The-Oaks-Rural-Fire-Brigade-185047838354554/">https://www.facebook.com/The-Oaks-Rural-Fire-Brigade-185047838354554/</a></p>
<b>Belimbla Park</b>	<b>NIL</b>
<b>Glenmore</b>	<b>NIL</b>

SCHOOLS	
Area	Information
<b>The Oaks</b>	<p><b>The Oaks Public School</b>            5 Burraborang Street, The Oaks NSW 2570            Ph: (02) 4657 1185            E: <a href="mailto:theoaks-p.school@det.nsw.edu.au">theoaks-p.school@det.nsw.edu.au</a></p>
<b>Belimbla Park</b>	<b>NIL</b>
<b>Glenmore</b>	<b>NIL</b>

CHILDCARE SERVICES & PRESCHOOLS	
Area	Information
<b>The Oaks</b>	<p><b>Buzy Bee Kindy</b>            102 Merlin Street, The Oaks NSW 2570            Ph: (02) 4657 1943            E: <a href="mailto:busybeekindy@yahoo.com.au">busybeekindy@yahoo.com.au</a>            Fb: <a href="https://www.facebook.com/groups/394119230955056">https://www.facebook.com/groups/394119230955056</a>            W: <a href="https://www.buzybeekindy.com.au">https://www.buzybeekindy.com.au</a></p> <p><b>Little Zak's Academy The Oaks</b>            873 Montpelier Drive, The Oaks NSW 2570            Ph: 1300 33 9257            E: <a href="mailto:theoaks@littlezaks.com.au">theoaks@littlezaks.com.au</a>            Fb: <a href="https://www.facebook.com/littlezakstheoaks">https://www.facebook.com/littlezakstheoaks</a></p> <p><b>The Oaks Preschool</b>            2 William Street, The Oaks NSW 2570            Ph: (02) 4657 1327            E: <a href="mailto:admin@theoakspreschool.com.au">admin@theoakspreschool.com.au</a>            Fb: <a href="https://www.facebook.com/theoakscommunitypreschool">https://www.facebook.com/theoakscommunitypreschool</a>            W: <a href="https://www.theoakspreschool.com.au">https://www.theoakspreschool.com.au</a></p>
<b>Belimbla Park</b>	<b>NIL</b>
<b>Glenmore</b>	<b>NIL</b>

SPORTS ASSOCIATIONS	
Area	Information
The Oaks	<p><b>The Oaks Tigers Rugby League Football Club</b>  Dudley Chesham Oval, 40 McIntosh Street, The Oaks NSW 2570  Ph: 0487 679 346  E: theoaksjrffc@hotmail.com / Seniors@hotmail.com  Fb: <a href="https://www.facebook.com/Group6CRL">https://www.facebook.com/Group6CRL</a>  Fb: <a href="https://www.facebook.com/theoaksjrffc">https://www.facebook.com/theoaksjrffc</a>  W: <a href="https://www.theoakstigers.com.au">https://www.theoakstigers.com.au</a></p>
	<p><b>The Oaks Netball Club</b>  Dudley Chesham Oval, 40 McIntosh Street, The Oaks NSW 2570  Ph: 0423 821 650  E: theoaksnetball@gmail.com  Fb: <a href="https://www.facebook.com/theoaksnetballclub/">https://www.facebook.com/theoaksnetballclub/</a></p>
	<p><b>The Oaks Horse and Pony Club</b>  Dudley Chesham Oval, 40 McIntosh Street, The Oaks NSW 2570  Ph: 0429 788 721  E: theoakssecretary@gmail.com  Fb: <a href="https://www.facebook.com/groups/153631327867/about">https://www.facebook.com/groups/153631327867/about</a></p>
	<p><b>The Oaks Burratorang Cricket Club</b>  Dudley Chesham Oval, 40 McIntosh Street, The Oaks NSW 2570  Ph: 0407 626 079  E: reid.jeanette@bigpond.com  Fb: <a href="https://www.facebook.com/tobcricketclub/">https://www.facebook.com/tobcricketclub/</a></p>
Belimbla Park	NIL
Glenmore	NIL

COMMUNITY ASSOCIATIONS	
Area	Information
The Oaks	<p><b>The Oaks Historical Society Inc</b>  43 Edward Street, The Oaks NSW 2570  Ph: 0432 689 034  W: <a href="http://www.wollondillymuseum.org.au">www.wollondillymuseum.org.au</a></p>
Belimbla Park	NIL
Glenmore	NIL

PROMINENT BUSINESSES	
Area	Information
All Areas	<p><b>Picton Chamber of Commerce (incl surrounding suburbs)</b>  W: <a href="https://www.facebook.com/PictonChamberofCommerce">https://www.facebook.com/PictonChamberofCommerce</a></p> <p><b>Wollondilly Local Business Directory</b>  Fb: <a href="https://www.facebook.com/groups/1305777129542823/">https://www.facebook.com/groups/1305777129542823/</a></p> <p><b>Agriculture, Sole Trader's and small home-based businesses</b></p>
The Oaks	<p><b>Australia Post – The Oaks LPO</b>  5/81-83 John Street, The Oaks NSW 2570  Ph: (02) 4657 1009</p> <p><b>Glen's Bakery Café</b>  67 John Street, The Oaks NSW 2570  Ph: (02) 4657 1566  E: theoaksbakerycafe@hotmail.com</p> <p><b>IGA Xpress The Oaks</b>  67 John Street, The Oaks NSW 2570  Ph: (02) 4504 8990  E: vb@igatheoaks.com.au  W: <a href="https://igaoaks.com.au">https://igaoaks.com.au</a></p> <p><b>The Oaks Hotel</b>  36 John Street, The Oaks NSW 2570  Ph: (02) 8710 3519  E: theoaks@laundry.com.au  Fb: <a href="https://www.facebook.com/theoakshotel2570">https://www.facebook.com/theoakshotel2570</a></p>
Belimbla Park	<p><b>The Dome (Petrol Station, Supermarket, Takeaway)</b>  1190 Burratorang Road, Belimbla Park NSW 2570</p> <p><b>Wild Automotive</b>  Shop 5 / 1190 Burratorang Road, The Oaks (Belimbla Park) NSW 2570  Ph: (02) 4657 2787  Fb: <a href="https://www.facebook.com/wildautocentre/">https://www.facebook.com/wildautocentre/</a>  W: <a href="https://www.wildautomotive.com.au">https://www.wildautomotive.com.au</a></p> <p><b>The Bottle O</b>  Shop 3/1190 Burratorang Road, Belimbla Park NSW 2570  Ph: (02) 4657 2167</p>
Glenmore	NIL

PRIVATE ANIMAL BOARDING FACILITIES	
Area	Information
<b>The Oaks</b>	<b>Wild Oaks (Spelling, Agistment &amp; Pre-Training)</b> 40 Strathmore Road, The Oaks NSW 2570 Ph: (02) 4657 1800 E: wildoaks1@bigpond.com Fb: <a href="https://www.facebook.com/WildOaksFarm">https://www.facebook.com/WildOaksFarm</a>
<b>Belimbla Park</b>	<b>NIL</b>
<b>Glenmore</b>	<b>NIL</b>

COUNCIL ASSETS	
Area	Information
<b>The Oaks</b>	<b>The Oaks Community Hall</b> 13 Russell Street, The Oaks NSW 2570 Ph: (02) 4677 1100 E: <a href="mailto:council@wollondilly.nsw.gov.au">council@wollondilly.nsw.gov.au</a> <b>Dudley Chesham Sports Ground</b> 40 McIntosh Street, The Oaks NSW 2570 Ph: (02) 4677 1100 E: <a href="mailto:council@wollondilly.nsw.gov.au">council@wollondilly.nsw.gov.au</a>
<b>Belimbla Park</b>	<b>NIL</b>
<b>Glenmore</b>	<b>NIL</b>

NEIGHBOURHOOD SAFER SPACES	
Area	Information
<b>The Oaks</b>	<b>The Oaks Public School</b> John Street, The Oaks <b>The Oaks Hall</b> Russell Street, The Oaks
<b>Belimbla Park</b>	<b>NIL</b>
<b>Glenmore</b>	<b>NIL</b>

ONLINE FACEBOOK COMMUNITY FORUMS & PAGES	
Area	Information
<b>All Areas</b>	<b>Macarthur-Wollondilly Community Noticeboard</b> Fb: <a href="https://www.facebook.com/groups/1653921468167893/">https://www.facebook.com/groups/1653921468167893/</a> <b>Mayor Matt Gould</b> Fb: <a href="https://www.facebook.com/CrMattGould">https://www.facebook.com/CrMattGould</a> <b>Picton, Camden and surrounding suburbs Community Page</b> Fb: <a href="https://www.facebook.com/groups/861602960581170">https://www.facebook.com/groups/861602960581170</a> <b>Picton Wollondilly and Macarthur Community Noticeboard</b> Fb: <a href="https://www.facebook.com/groups/745054278934576/">https://www.facebook.com/groups/745054278934576/</a> <b>What's Happening in Wollondilly</b> Fb: <a href="https://www.facebook.com/groups/2853710421546044/">https://www.facebook.com/groups/2853710421546044/</a> <b>Wollondilly Living</b> Fb: <a href="https://www.facebook.com/groups/wollondillyliving/about/">https://www.facebook.com/groups/wollondillyliving/about/</a> <b>Wollondilly Community Living</b> Fb: <a href="https://www.facebook.com/groups/973623299396093/">https://www.facebook.com/groups/973623299396093/</a> <b>Wollondilly Incidents &amp; Alerts</b> Fb: <a href="https://www.facebook.com/groups/wollondilly/">https://www.facebook.com/groups/wollondilly/</a> <b>Wollondilly Community Noticeboard</b> Fb: <a href="https://www.facebook.com/groups/945217202158492/">https://www.facebook.com/groups/945217202158492/</a> <b>Wollondilly Life</b> Fb: <a href="https://www.facebook.com/groups/200220494140376/">https://www.facebook.com/groups/200220494140376/</a> <b>Wollondilly Shire Council</b> Fb: <a href="https://www.facebook.com/wollondilly">https://www.facebook.com/wollondilly</a>
<b>The Oaks</b>	<b>What's happening in The Oaks, Mount Hunter, Belimbla Park &amp; Oakdale</b> Fb: <a href="https://www.facebook.com/groups/1698370250413710/">https://www.facebook.com/groups/1698370250413710/</a> <b>Our Community The Oaks, Mount Hunter, Oakdale, Belimbla Park, Glenmore and Surrounding towns</b> Fb: <a href="https://www.facebook.com/groups/TheOaksBelimblaOakdale">https://www.facebook.com/groups/TheOaksBelimblaOakdale</a>
<b>Belimbla Park</b>	<b>What's happening in The Oaks, Mount Hunter, Belimbla Park &amp; Oakdale</b> Fb: <a href="https://www.facebook.com/groups/1698370250413710/">https://www.facebook.com/groups/1698370250413710/</a> <b>Our Community The Oaks, Mount Hunter, Oakdale, Belimbla Park, Glenmore and Surrounding towns</b> Fb: <a href="https://www.facebook.com/groups/TheOaksBelimblaOakdale">https://www.facebook.com/groups/TheOaksBelimblaOakdale</a>
<b>Glenmore</b>	<b>Our Community The Oaks, Mount Hunter, Oakdale, Belimbla Park, Glenmore and Surrounding towns</b> Fb: <a href="https://www.facebook.com/groups/TheOaksBelimblaOakdale">https://www.facebook.com/groups/TheOaksBelimblaOakdale</a>



**Wollondilly**  
Shire Council

[www.wollondilly.nsw.gov.au](http://www.wollondilly.nsw.gov.au)