



MENANGLE OLD SCHOOL SITE

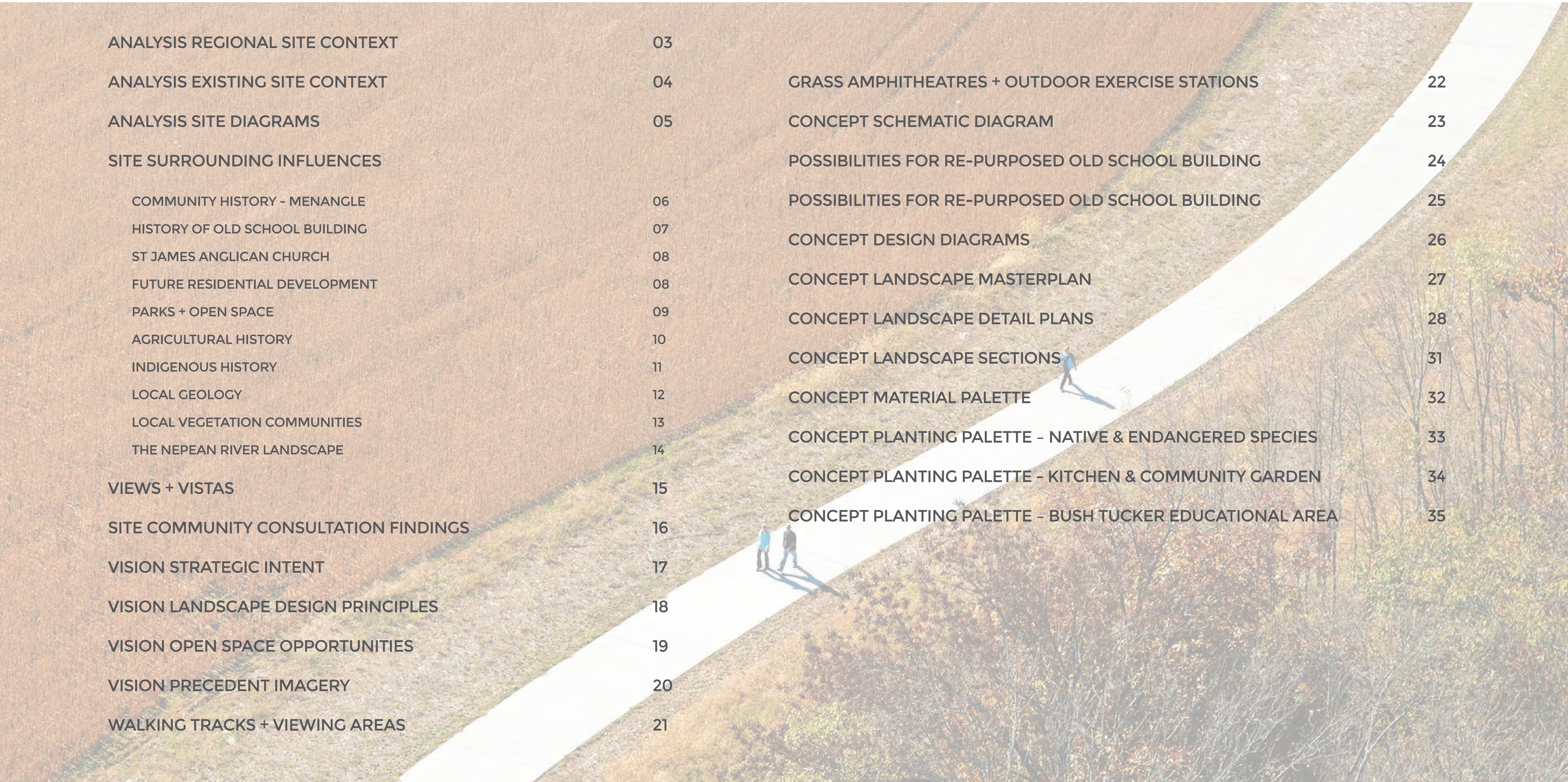
LANDSCAPE CONCEPT

NOVEMBER 2019 [G]

ADOPTED 21.10.2019

ARCADIA
LANDSCAPE ARCHITECTURE

CONTENTS



ANALYSIS REGIONAL SITE CONTEXT	03		
ANALYSIS EXISTING SITE CONTEXT	04	GRASS AMPHITHEATRES + OUTDOOR EXERCISE STATIONS	22
ANALYSIS SITE DIAGRAMS	05	CONCEPT SCHEMATIC DIAGRAM	23
SITE SURROUNDING INFLUENCES		POSSIBILITIES FOR RE-PURPOSED OLD SCHOOL BUILDING	24
COMMUNITY HISTORY - MENANGLE	06	POSSIBILITIES FOR RE-PURPOSED OLD SCHOOL BUILDING	25
HISTORY OF OLD SCHOOL BUILDING	07	CONCEPT DESIGN DIAGRAMS	26
ST JAMES ANGLICAN CHURCH	08	CONCEPT LANDSCAPE MASTERPLAN	27
FUTURE RESIDENTIAL DEVELOPMENT	08	CONCEPT LANDSCAPE DETAIL PLANS	28
PARKS + OPEN SPACE	09	CONCEPT LANDSCAPE SECTIONS	31
AGRICULTURAL HISTORY	10	CONCEPT MATERIAL PALETTE	32
INDIGENOUS HISTORY	11	CONCEPT PLANTING PALETTE - NATIVE & ENDANGERED SPECIES	33
LOCAL GEOLOGY	12	CONCEPT PLANTING PALETTE - KITCHEN & COMMUNITY GARDEN	34
LOCAL VEGETATION COMMUNITIES	13	CONCEPT PLANTING PALETTE - BUSH TUCKER EDUCATIONAL AREA	35
THE NEPEAN RIVER LANDSCAPE	14		
VIEWS + VISTAS	15		
SITE COMMUNITY CONSULTATION FINDINGS	16		
VISION STRATEGIC INTENT	17		
VISION LANDSCAPE DESIGN PRINCIPLES	18		
VISION OPEN SPACE OPPORTUNITIES	19		
VISION PRECEDENT IMAGERY	20		
WALKING TRACKS + VIEWING AREAS	21		

ANALYSIS REGIONAL SITE CONTEXT



Menangle is part of Wollondilly Shire, in the Macarthur region of NSW roughly 70km south west of Sydney. It has a prolific cultural and agricultural past, creating a rich heritage for this small village.



ANALYSIS EXISTING SITE CONTEXT



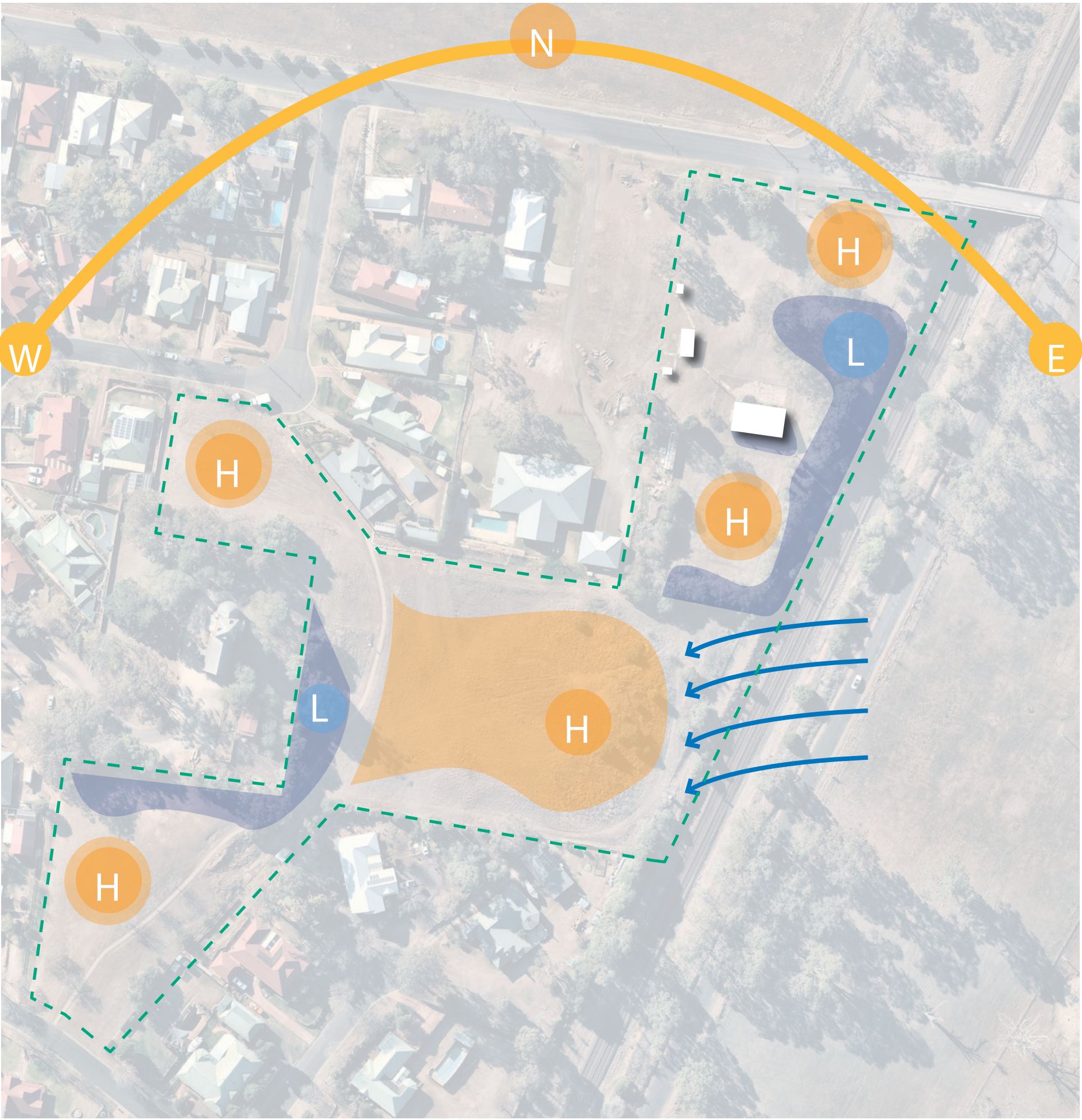
ANALYSIS SITE DIAGRAMS

ACCESS + CIRCULATION



- LEGEND
- Vehicular Entry Points/Circulation
 - Informal Vehicular Entry points
 - Existing Informal Parking locations
 - Pedestrian Circulation
 - Informal pathways
 - Gathering/hang out

SOLAR + WIND



- LEGEND
- High solar access points
 - Low solar access points
 - High Wind exposure

TOPOGRAPHY + VEGETATION



- LEGEND
- Existing trees to be retained where possible
 - High points
 - Low points
 - Hydrology



SITE SURROUNDING INFLUENCES

COMMUNITY HISTORY - MENANGLE

The name Menangle was derived from the Aboriginal word ‘Manhangle’ or ‘place of swamps’.

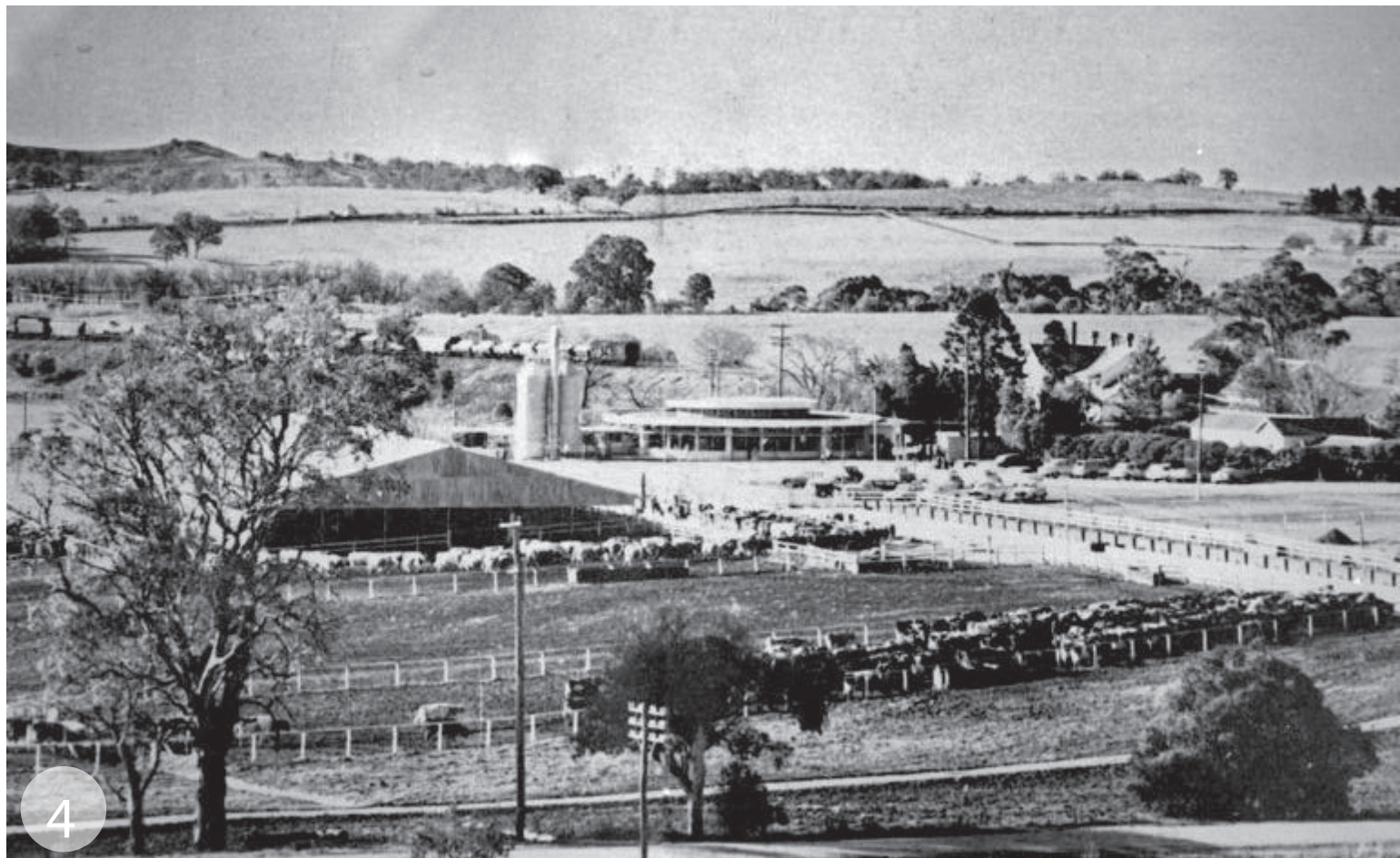
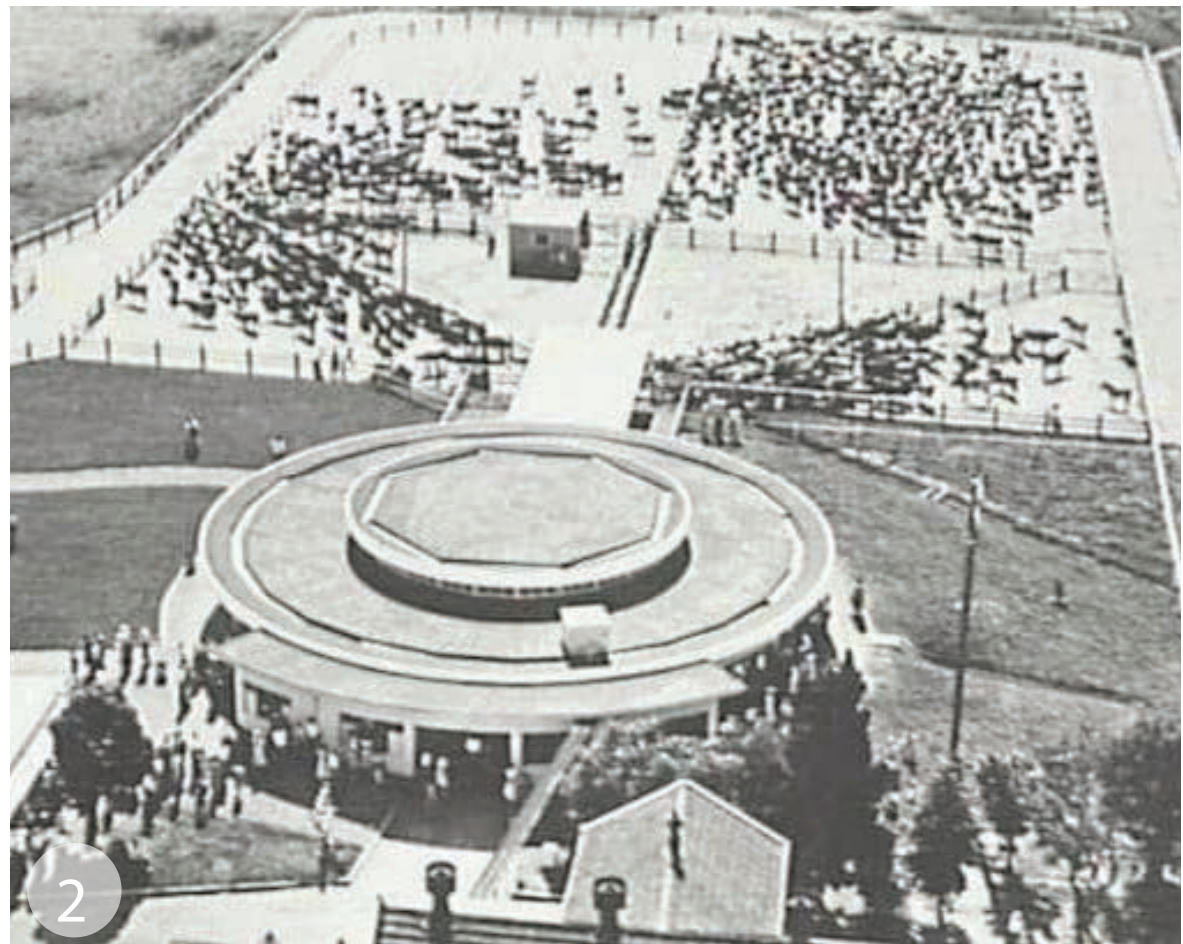
The first settlers in Menangle maintained a sense of stewardship for the Environment. They understood the fertile soils, food production opportunities and the agricultural richness of the area as a whole.

Development of the Menangle area occurred with the introduction of livestock and farming. Cattle and Wool production were the main drivers during the late 1700s and early 1800s through farming Pioneers, James and Elizabeth Macarthur. Following on from this, dairy farming began in the region in 1826 and vineyards were established later in 1830. Milk production was in full swing and Menangle soon became the largest supplier of Milk to Sydney.

With this strong agricultural focus, residential development was mainly centered around Camden Park Estate, which contained the main residences of James and Elizabeth Macarthur and their descendants. Around 1850, there were 900 people living in the estate. After 1850, development began to spread in the form of small farm cottages, dotted along the Nepean River. Today, these remaining Cottages are heritage listed.

The introduction of the railway line and Station (1863) opened up the area to the north and south and made it easier to export farming produce. The station also became a focus for development. The Iron Rail Bridge also provided more social and commercial benefits. Today, it remains as one of the most significant rail bridges in Australia.

As the population in the area began to grow, there became a greater need for more community facilities. The Menangle School opened its doors in 1871 closely followed by St James Anglican Church in 1876 which provided a greater sense of community within the Menangle area.



Images 1. St James Anglican Church, 2. The Old Rotolactor, 3. Camden Park Estate Mansion, 4. The Old Rotolactor and surrounding Dairy, 5. Rail transport

SITE SURROUNDING INFLUENCES

HISTORY OF OLD SCHOOL BUILDING

- 1849 //
- Camden Park Estate applies for a school, resulting in establishment of the Church School in what was then known as the suburb of Riversford, now Menangle.
- 1869-71//
- Public pressure results in the opening of Menangle public school, on land donated by Sir William Macarthur “for the education of the children of Menangle”. The initial building was completed in 1871, with an enrolment of 43 pupils
- 1876//
- A residence was added before repairs; The first school building was sold by auction along with the fence
- 1906//
- Half an acre was given by the Macarthur family for a new school building and residence, constructed using rare Flemish or Dutch bond brickwork
- 1922//
- A tennis court and 45 foot flagpole was added in the playground as were veggie plots.
- 1928//
- Was voted the school with the best garden within 50 miles of Sydney, with 54 pupils.
- 1960//
- Camden Park Estate allocates two additional acres to the school, maintenance work and minor upgrades carried out.
- 1971//
- Menangle School Centenary celebrated
- 1974//
- Menangle School closes down
- 2008//
- Sale of the site and subdivision announced
- 2013//
- Old School was officially bought by Wollondilly Shire Council from the Department of Education

In the years following this, the Community fought hard to save the site from demolition as they appreciated the significant historical importance of the site. After a community consultation held by Wollondilly Shire, the public have shown significant interest for the site to be restored to celebrate the history and heritage of the Community.



SITE SURROUNDING INFLUENCES

ST JAMES ANGLICAN CHURCH

The Church, also know as ‘the light on the hill’ remains a focal point for the community of Menangle.

The Church block adjoins to the western edge of the Site. During large weddings, christenings and funerals, informal car parking generally occurs within the open space of the Site - therefore there is a need to provide these facilities and access in the redevelopment works for the Old School Building Masterplan.

FUTURE RESIDENTIAL DEVELOPMENT

A large residential development is proposed for the land to the north and east of the Site. This development will be a combination of medium and low density housing accommodating up to 350 new dwellings.

Facilities are proposed to be at the centre of this development centering around regenerating the old Rotolactor precinct in order to connect to the cultural history of the area.



SITE SURROUNDING INFLUENCES

PARKS + OPEN SPACE

Currently the Menangle Old School site covers a large central area of the Menangle Village.

It is in close proximity to nearby churches, a local playground and shares borders with the central hub of residential Menangle.

The site is only a short walk from the newly opened Durham Green Retirement Village. Strengthening these connections between the site and the Retirement Village would help to create unison and could therefore become the central heart or Community hub of Menangle.

A vital connection from the Site, over Station St into the proposed open space area of the future developments will help to create a greater and more connected sense of community for residents of the area. It would allow for increased walkability and social connections within the growing Village.

A visual connection to the nearby Nepean River is powerful, as it brings influence of endemic flora and fauna communities. These species can be used to strengthen the image and foundations of the Masterplan for the Old School Site.

The proposed Old Menangle School site has huge potential to become a strong Community hub due to its location being right in the heart of Menangle. It has the capacity to Complement the existing open space areas and will aim to maintain a strong community focus to benefit residents, whilst also potentially becoming a tourism destination for travellers.



Dean McGrath Playground/ Station Street Reserve



Area to become Mirvac Residential Development



Historic Menangle Rail Bridge across Nepean River



Nearby Durham Green Retirement Village



St Patrick's Catholic Church and Grounds



SITE SURROUNDING INFLUENCES

AGRICULTURAL HISTORY

Located on the rich, fertile flood plains of the Nepean River, Menangle began its settler agricultural history when five head of cattle escaped the settlement at Sydney Cove and were found some 40 miles South West, earning the area the title of "Cow Pastures". Having multiplied to a herd of about 40 cattle, the area was declared a government reserve in order to protect the breeding ground and ensure the supply of beef.

In 1805 James and Elizabeth Macarthur took responsibility for the farming and care of this land. Their development of the Australian Wool Industry is well known, and therefore Wool production in this area began to grow and became a valuable commodity for trading purposes in the early years of agricultural production in Australia.

James and William, sons of James and Elizabeth began to develop various other farming practices in this area including; cultivation, harvest & irrigation. They then went on to develop Australia's first commercial Vineyard combined with what would become Australia's finest orchard and largest dairy.

Another significant agricultural development within the Menangle region is the Rotary Dairy. The rotolactor was later developed into a tourist attraction, regularly visited by tourists around the 60's and 70's.



Images 1. Wool production, 2. Inside the old Rotolactor, 3. The Old Rotolactor, 4. Old Rotolactor and surrounds, 5. Razorback Ridge Winery imagery

SITE SURROUNDING INFLUENCES

INDIGENOUS HISTORY

The Tharawal people were the original Indigenous inhabitants of the area which is now Menangle and its surrounds. The Tharawal people named the area Menangle which means ‘Place of many swamps’.

A major gathering point for these people was in the areas surrounding the natural lagoons. It was here that they would cultivate and farm aquatic animals for food. These lagoons are commonly known as Carabeely, Barragal and Menangle - two of which are now located inside the Elizabeth Macarthur Agricultural Institute.

There is evidence of fire being used to encourage grassland environments along the river flats - with heavily wooded areas being retained through the more hilly regions. These land management principles were carried through during European settlement in the region.



SITE SURROUNDING INFLUENCES

LOCAL GEOLOGY

Menangle appears to be at a junction of three geological groups, however, the area is largely influenced by the Nepean River and associated soils and rock arrangements.

Hawkesbury sandstone is dominant in the region, made up of medium to coarse grained quartz sandstone and very minor shale and laminite lenses.

The second most predominant soil type in this region is quartz and lithic ‘fluvial’ sand silt and clay

Ashfield shale is also found in the region made up of laminate and dark grey siltstone.



SITE SURROUNDING INFLUENCES

LOCAL VEGETATION COMMUNITIES

Various ecological communities around Menangle have been listed as endangered and so need to be protected with any further development to the region. Endangered communities include: Shale Hills Woodland as part of the Cumberland Plain Woodland, Moist Shale Woodland and Alluvial Woodland as part of the Sydney Coastal River-flat forest.

Dominant species within these ecological communities include:

- Eucalyptus moluccana (Grey Box)
- Dillwynia sieberi (Prickly Parrot-Pea)
- Acacia implexa (Hickory wattle)
- Dianella longifolia (Flax Lily)
- Themeda australis (Kangaroo Grass)
- Hardenbergia violacea (Creeping boobialla)

Other local native species found in the area include:

- Acacia elata (Cedar Wattle)
- Acacia parramattensis (Parramatta Wattle)
- Angophora floribinda (Rough-barked Apple)
- Casuarina cunninghamiana (River She-oak)
- Eucalyptus crebra (Narrow-leaved Ironbark)
- Eucalyptus maculata (Spotted Gum)
- Eucalyptus molucanna (Grey Box)
- Eucalyptus tereticornis (Forest Red Gum)
- Grevillea sericea (Pink Spider Flower)
- Banksia serrata (Old Man Banksia)



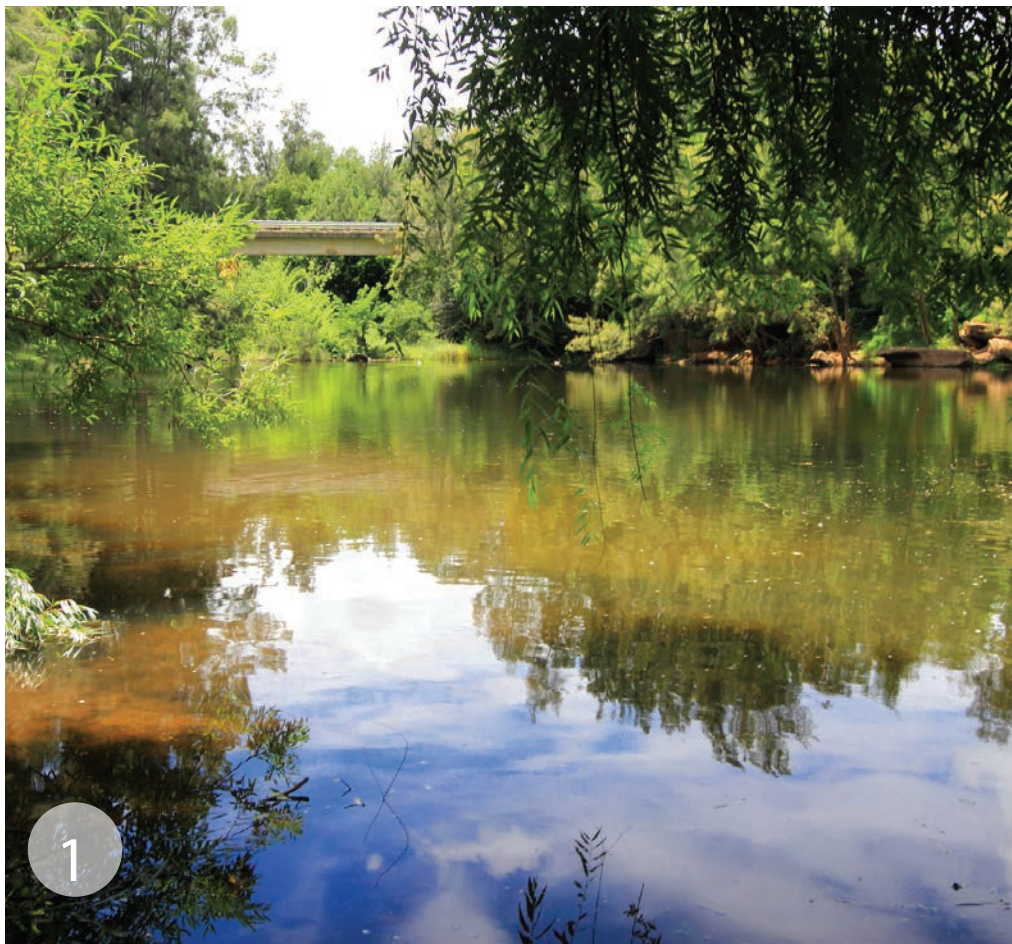
SITE SURROUNDING INFLUENCES

THE NEPEAN RIVER LANDSCAPE

The Nepean River flows North through Wollondilly Shire, its complex ecosystems provide a habitat for a large range of native flora and fauna species.

It was once used as a source of food for fishing etc for the Aboriginal People in this area. It was also a central gathering point for these tribes. Since European settlement, increased pressures from land clearing and irrigation have created significant stress for this major waterway. As a result, there are currently planning procedures in place to protect and preserve the natural beauty of the Nepean River within the Wollondilly Shire.

The Menangle Rail Bridge was constructed over the Nepean River in 1863 and was the first large iron bridge of its kind in NSW. The bridge remains significant on a national and international level, as it is one of few remaining bridges of its kind and has been heritage listed.



Images 1. Nepean River Vegetation + character, 2. Historic Menangle Rail Bridge, 3.Historic Menangle Rail Bridge, 4. Historic Menangle Rail Bridge, 5. Nepean Dam

SITE VIEWS + VISTAS

HERITAGE PROTECTION

Due to the historical and heritage importance of this site and the significance it holds with the community we see the needs to protect and celebrate various views and vistas across the site.

From a landscape perspective we appreciate the unique location and surrounding environments to this site.

Views to be celebrated and protected are highlighted in the adjacent diagram.



LEGEND

- Views to be protected and celebrated:
- 1 Views from street into site towards existing Old School Building
 - 2 Views from back of site towards the back of the historic Old School Building
 - 3 Views from high point of mound down towards the Old School Building and out towards Station St
 - 4 Views from mound out across adjacent railway into the wider landscape
 - 5 Views from back of mound up towards St James Church - light on the hill
 - 6 Views from Riversford Close up towards historic Church Building
 - 7 Views from Church grounds across the Site down towards Riversford Close and further into the wider landscape
 - 8 Views from Church grounds out into wider landscape
 - 9 Views from St James Av up towards historic Church Building
- Views to be screened with vegetation for the privacy of neighbours
- Rural Landscape View Corridors as per the **Menangle Landscape Conservation Area Assessment** Report.

Background reference material: “Menangle Landscape Conservation Area Assessment of Significance & Proposed Boundaries”



SITE COMMUNITY CONSULTATION FINDINGS

FIRST ROUND OF COMMUNITY CONSULTATION

The first round of Community consultation was undertaken by Wollondilly Shire Council.

The most popular idea to be incorporated into the Masterplan for this area was to **restore the Old School Building**. This is what the community of Menangle had highest on their list of priorities.

Other ideas and visions for the Old School Building and surrounding area have been illustrated in the adjacent diagram.



Images from Menangle 'Milk Shake-up'. Source: Macarthur Advertiser



To provide an Open Space solution that responds to the Community and the rich cultural heritage of Menangle, offering a variety of programmed and unprogrammed spaces.



VISION LANDSCAPE DESIGN PRINCIPLES



COMMUNITY

Respond to the ideas specified by local community members in order to accommodate for the needs of the immediate residents and the wider regional community.



HERITAGE

Celebrate the rich agricultural history and heritage of Menangle and develop educational opportunities to enhance these values.



COMFORT

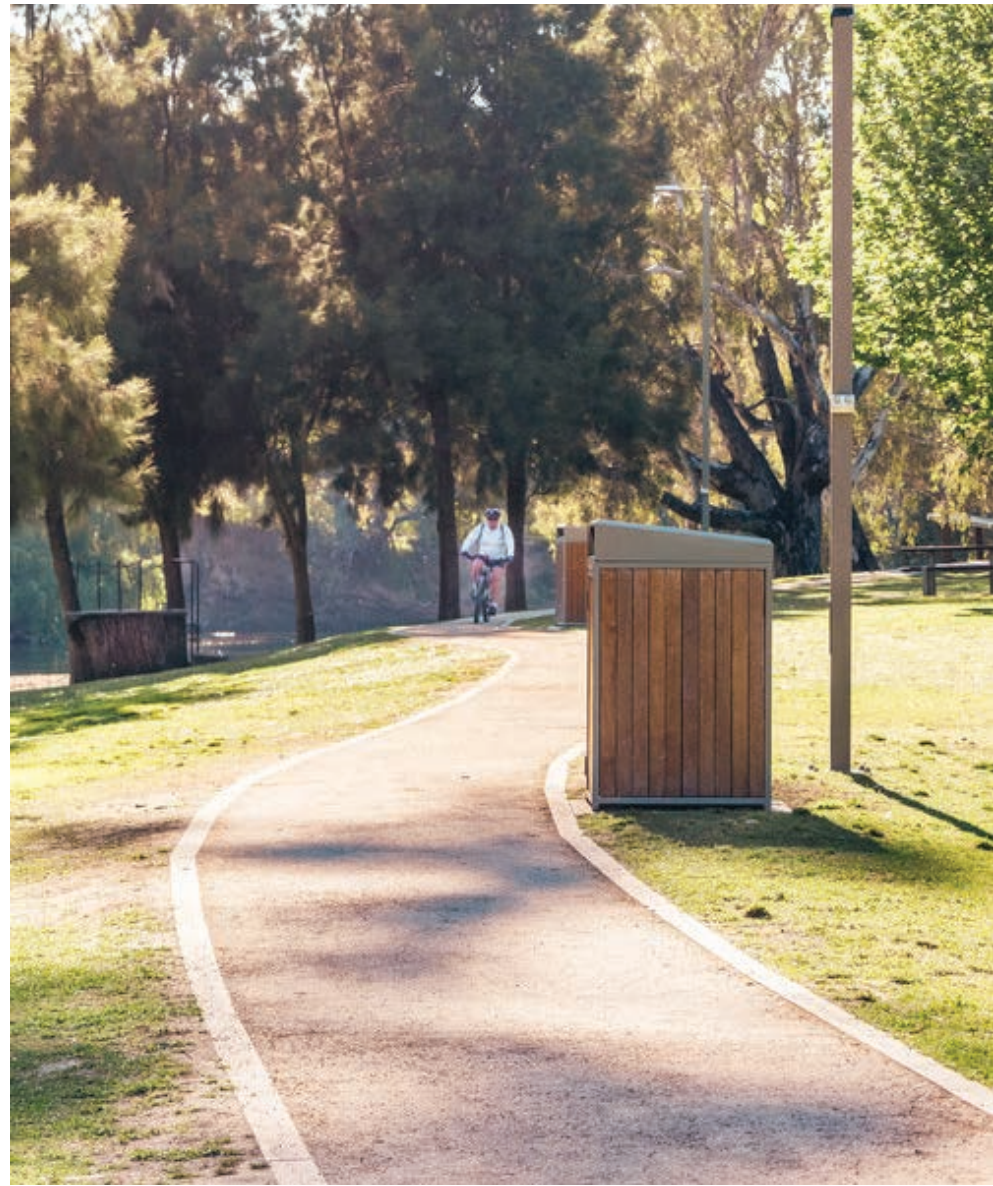
Provide an open space experience equipped with shade, water and shelter options to provide comfort which will invite people to stay and spend time in Menangle.



SAFETY

Incorporate CPTED measures to ensure the safety of users at all times of the day/evening and night.

VISION OPEN SPACE OPPORTUNITIES



VISION PRECEDENT IMAGERY

COMMUNITY FOOD PRODUCTION OPPORTUNITIES



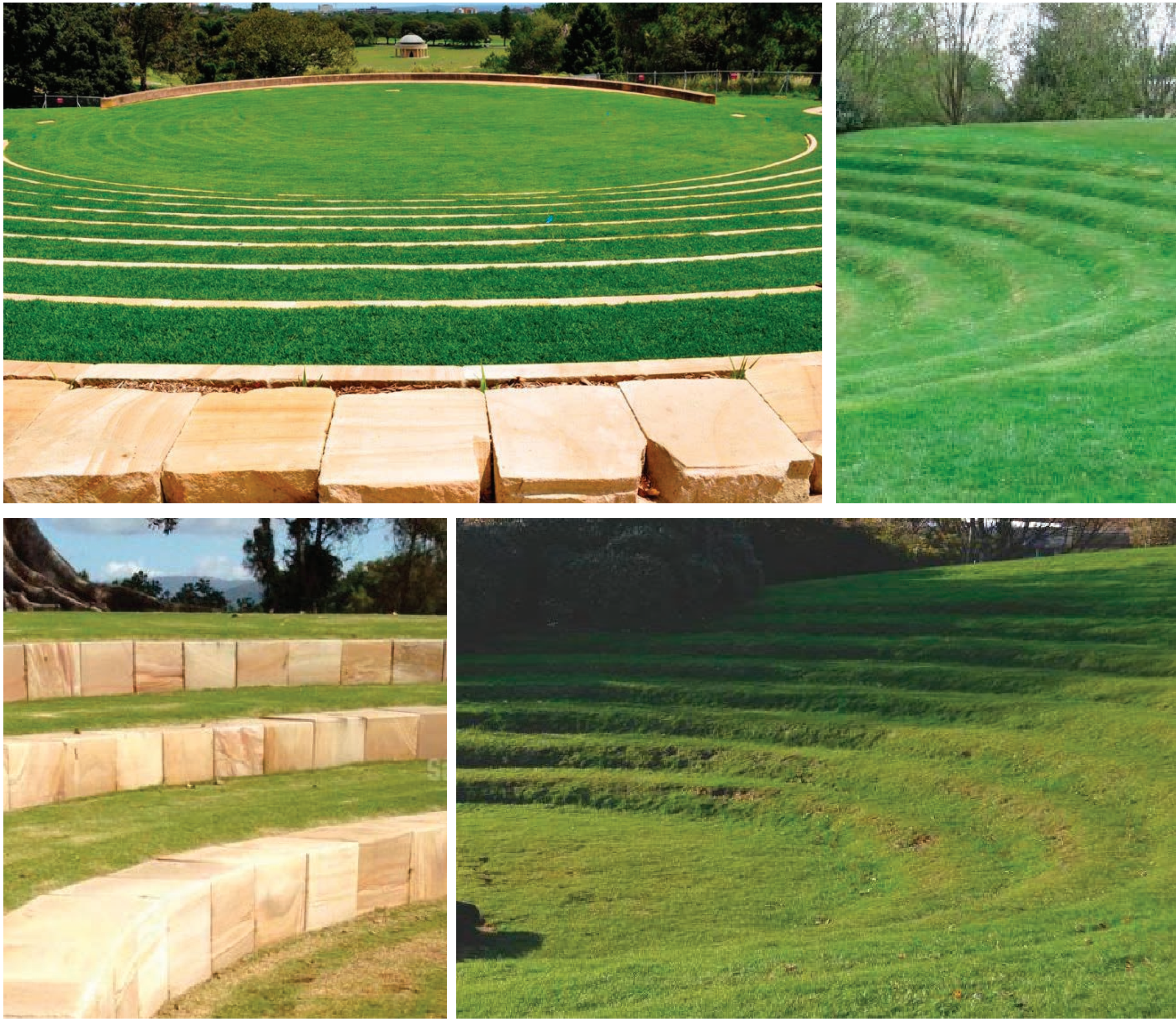
VISION PRECEDENT IMAGERY

WALKING TRACKS + VIEWING AREAS



VISION PRECEDENT IMAGERY

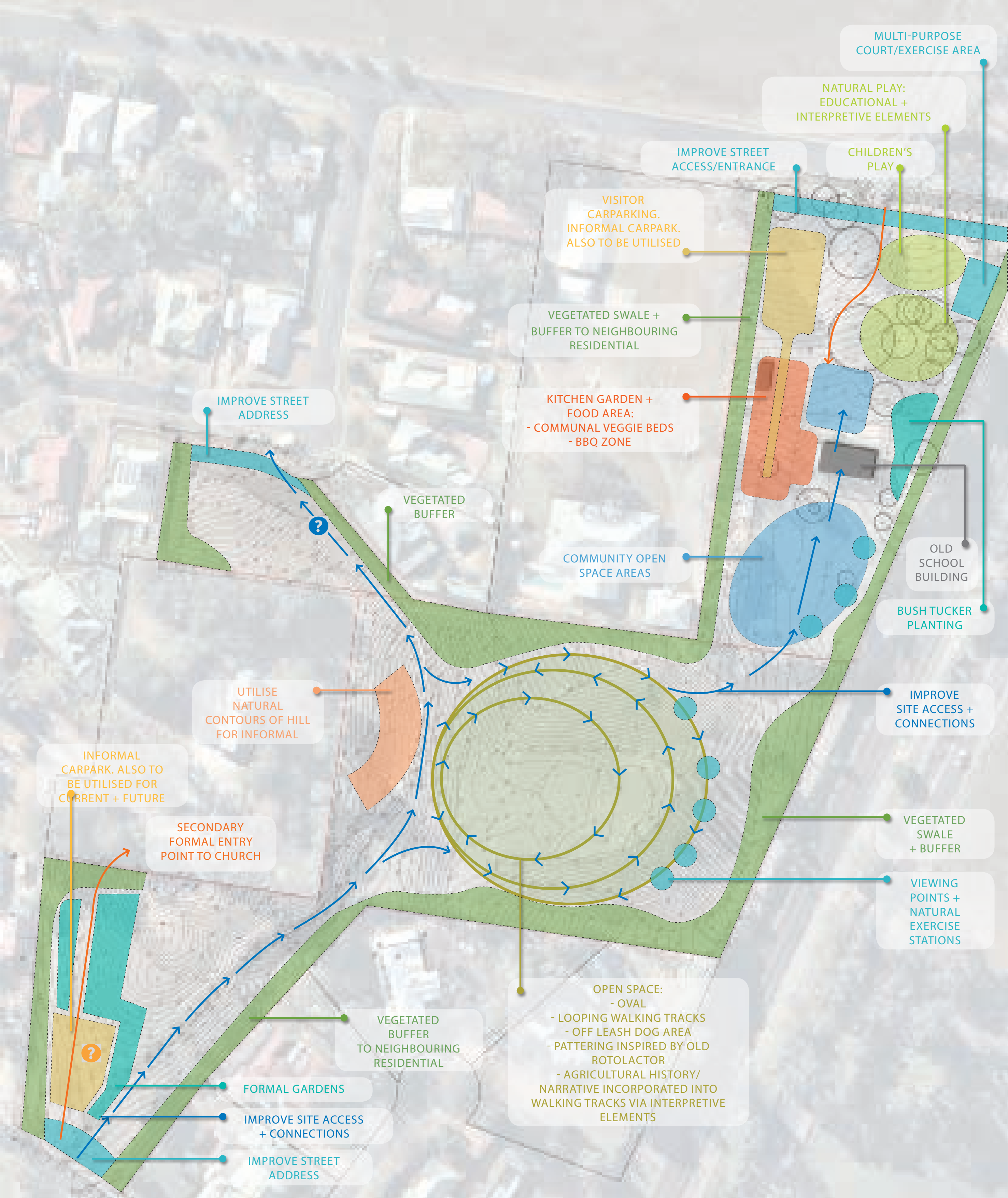
GRASS AMPHITHEATRES



OUTDOOR EXERCISE STATIONS



CONCEPT SCHEMATIC DIAGRAM



? Path design is subject to detailed investigation, design + feasibility process due to the challenging topography of the site
? Carpark design is subject to detailed investigation (inc. heritage impact assessment) design + feasibility process to confirm the layout, including potential consideration of an east west orientation



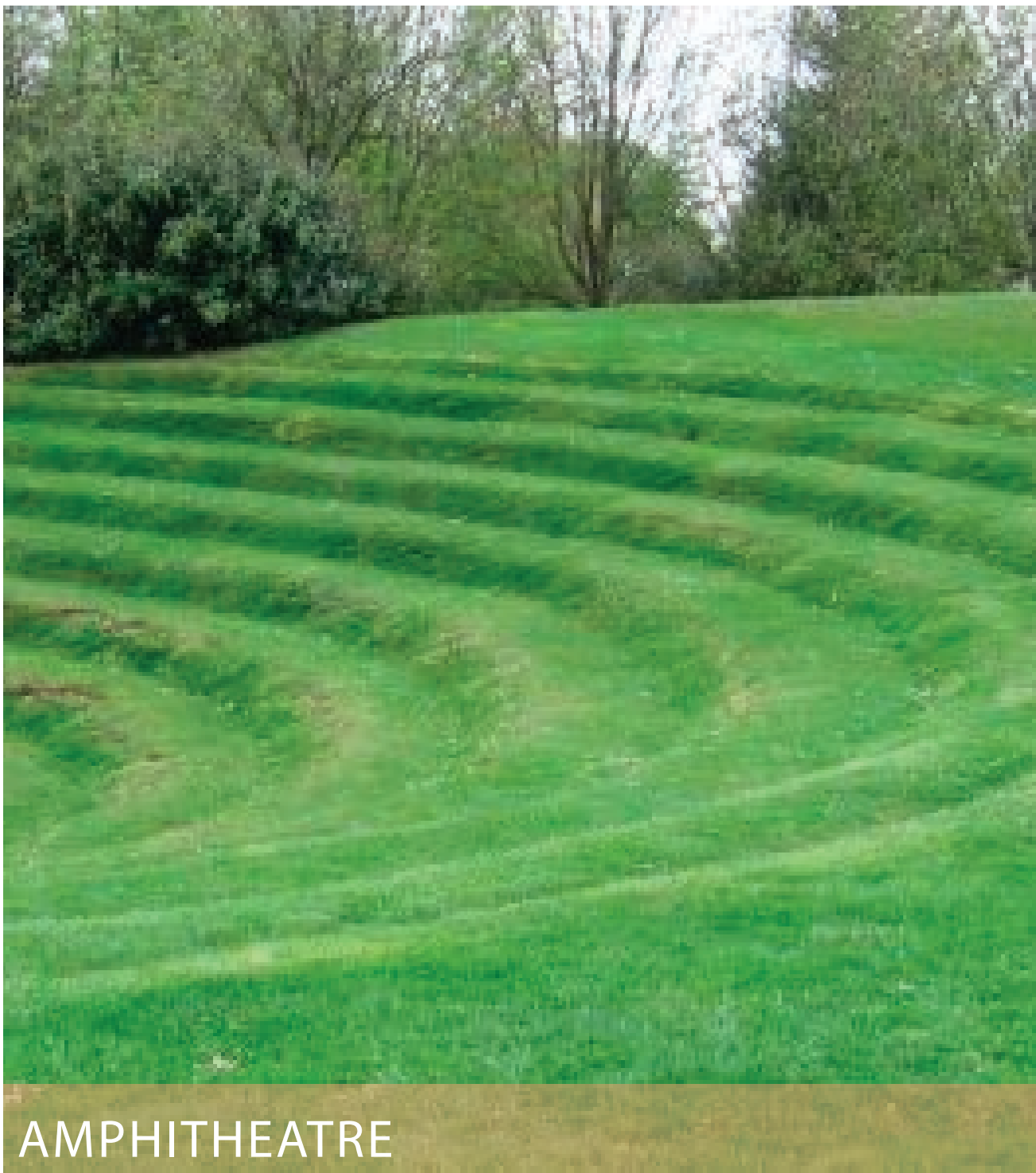
KITCHEN GARDEN



NATURAL PLAY



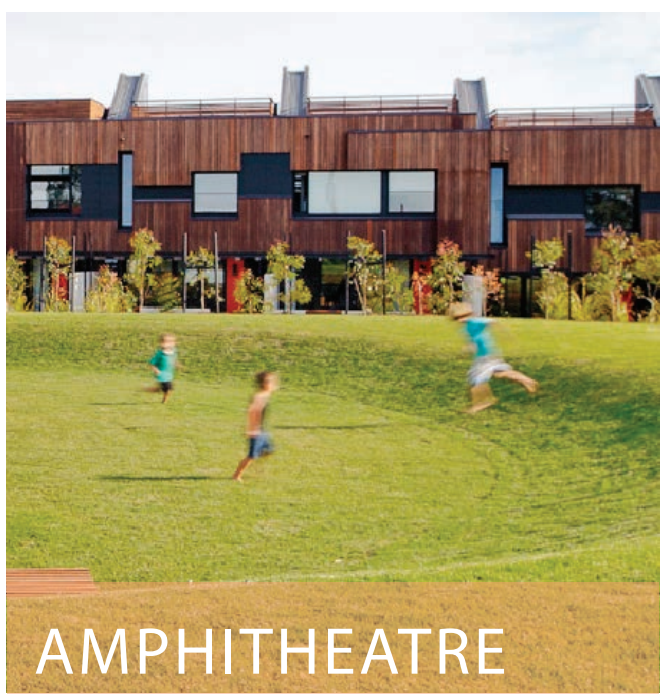
CHILDREN'S PLAY



AMPHITHEATRE



LANDSCAPE ARBORS



AMPHITHEATRE



LOCAL PRODUCE



VIEWING POINTS

POSSIBILITIES FOR REPURPOSED OLD SCHOOL BUILDING



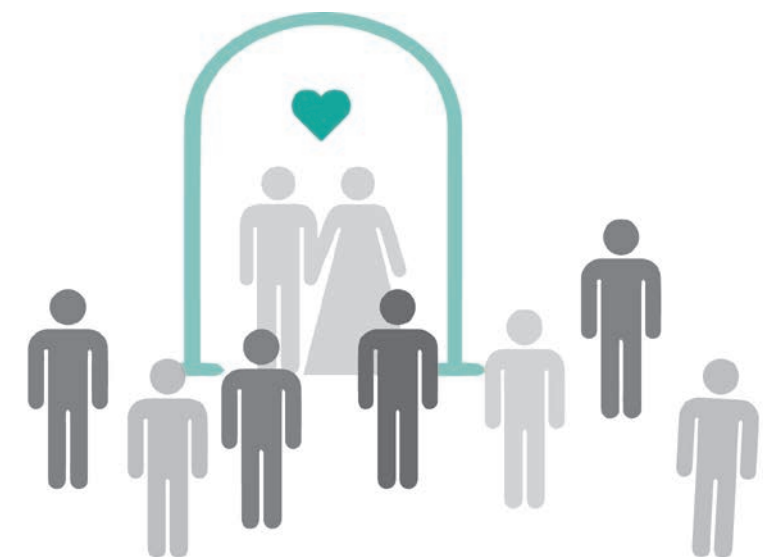
- REQUIREMENTS:
- TOILETS
 - STORAGE
 - KITCHEN FACILITIES
 - SERVING WINDOW



- TEACHING +
DISPLAY SPACE
- AGRICULTURAL DISPLAY
 - ADDITIONAL TEACHING SPACE FOR LOCAL ORGANISATIONS
 - LEARN TO GARDEN
 - BOOK SWAP
 - HERITAGE + CULTURAL DISPLAYS



- PILATES, YOGA,
DANCE, MUSIC
- REQUIREMENTS:
- LARGE INDOOR AREA
 - STORAGE FOR EQUIPMENT
 - AV/AUDIO
 - TOILETS
 - OUTDOOR SPORTS EQUIPMENT STORAGE



- FUNCTION CENTRE
- WEDDINGS
 - SEASONAL FESTIVITIES
 - COMMUNITY DISCUSSIONS
 - BOOK CLUB GROUPS
 - SECOND HAND SHOP
 - CEREMONIES

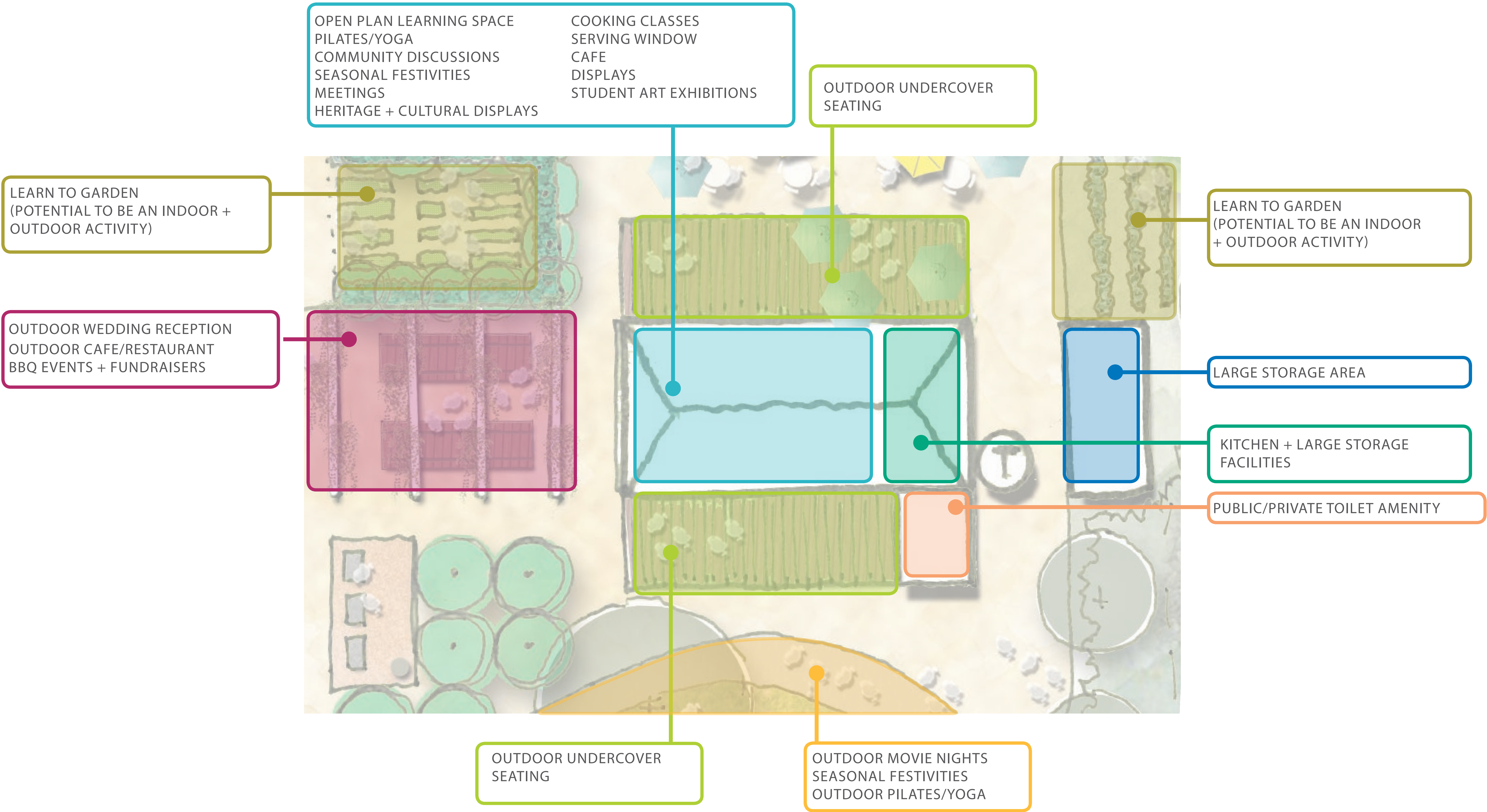


- CHILDCARE/
PLAYGROUP
- REQUIREMENTS:
- LARGE INDOOR AREA
 - TOILETS
 - STORAGE FOR EQUIPMENT
 - AV/AUDIO



- COOKING CLASSES
- REQUIREMENTS:
- KITCHEN FACILITIES
 - DEMONSTRATION AREA
 - STORAGE
 - TOILETS

POSSIBILITIES FOR REPURPOSED OLD SCHOOL BUILDING



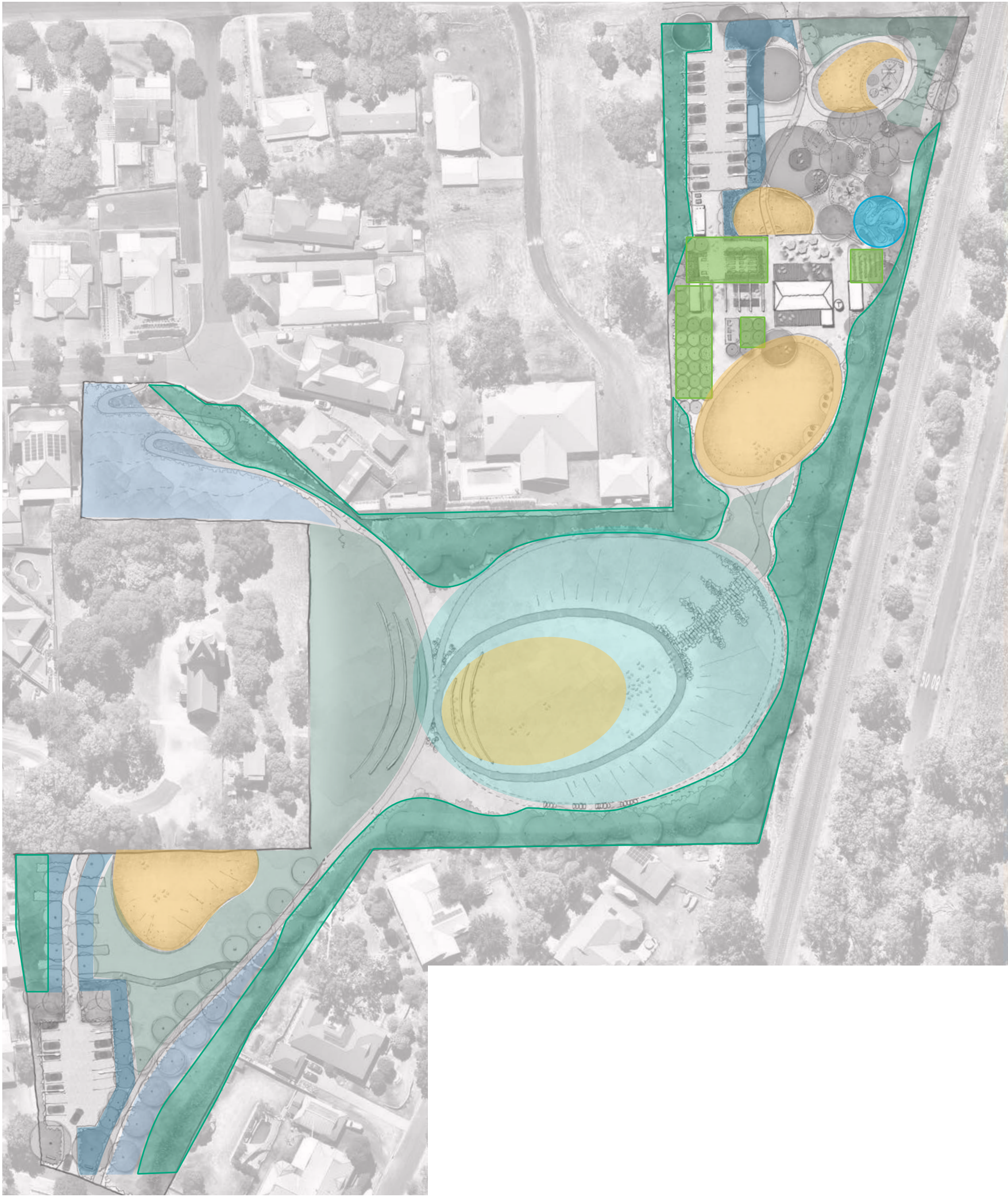
CONCEPT DESIGN DIAGRAMS

1. CONNECTIONS



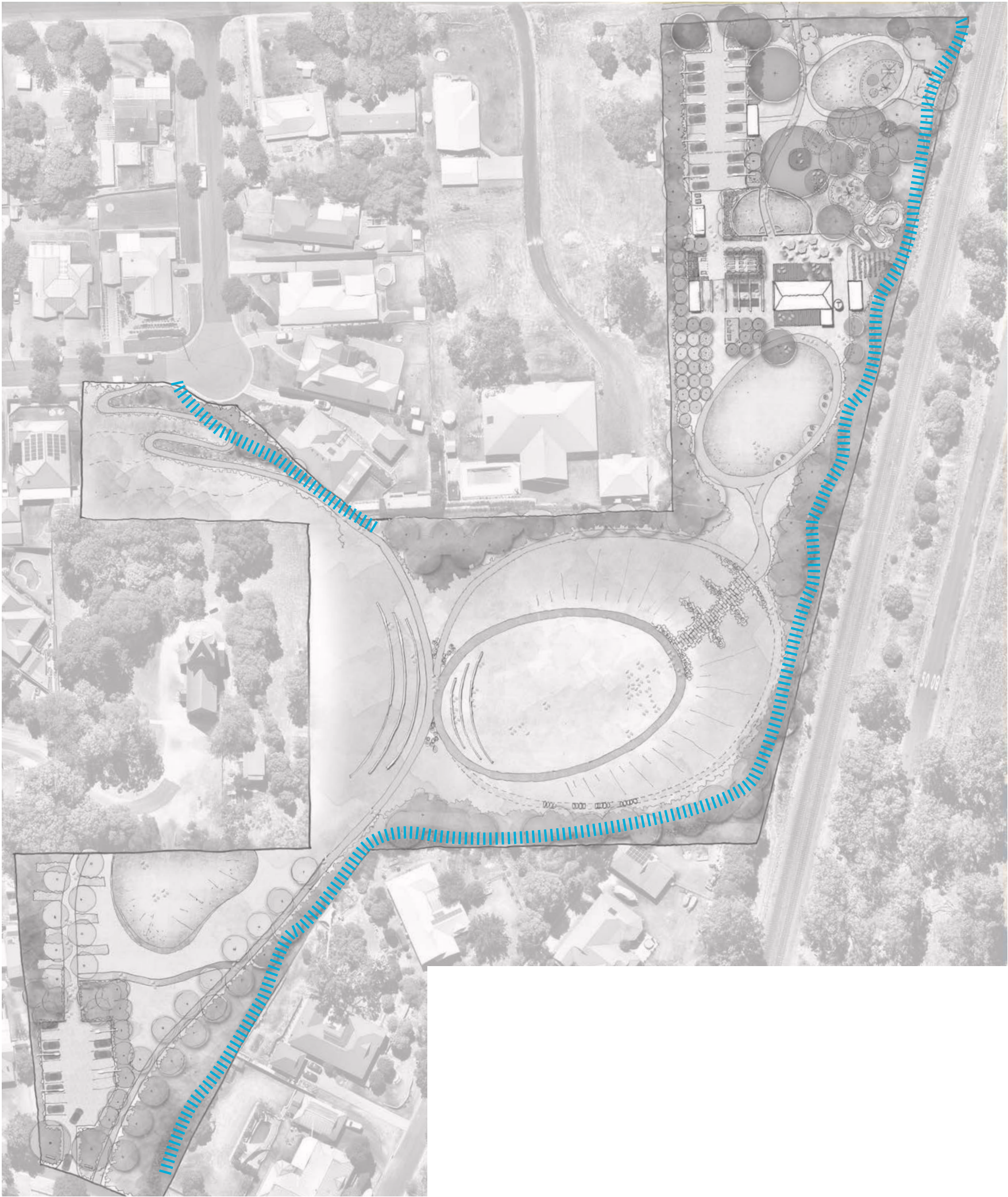
- Vehicular connections
- Service vehicle access/routes. To be developed in detailed design phase
- Major pedestrian connections
- Secondary pedestrian connections
- Lines of sight/ Views
- Accessible path connection from St James Av to Station St and Menangle train station

2. PLANTING SCHEMES



- Cumberland plain buffer/screen planting
- Kitchen garden/vegetables & orchards
- Indigenous bush tucker plantings
- Ecological/Endangered plantings
- Cumberland plain grass meadows
- Turf areas to be utilised for current and future events
- Maintained garden bed areas
- Slashed grass/native turf zones

3. HYDROLOGY



- Proposed Vegetated swale to direct water through site



CONCEPT DESIGN DIAGRAMS

4. INTERPRETIVE LAYERING



- Interpretive 'school history' elements incorporated into various areas of play. This will aid as an educational tool to illustrate the unique history of the Old Menangle School
- - -> Interpretive patterning or natural sculptural elements to reflect the rich agricultural history of Menangle
- ||||| Gravel interpretive Bush walk
- ||||| Symbolic arbor structure to compliment and reflect the significant heritage and architecture of the Old School Building.

5. FARMING INFLUENCE + PATTERNING



- ### Lineal patterning of the vineyard industry is represented through the formal kitchen garden/produce areas
- Indigenous culture is reflected through the patterning of nature play and central lawn areas
- ◎ Large scale agriculture influence ie. milk and livestock has influenced the sweeping circular pathways and planting styles towards the south of the site

6. OPEN SPACE OFFERINGS



- Central community hub
- Active play zones/open space offerings to also be utilised for current and future events
- Interpretive play areas
- Sensory bush track experiences
- Hardstand carpark areas also to be utilised for current and future events
- Service vehicle route



CONCEPT LANDSCAPE MASTERPLAN



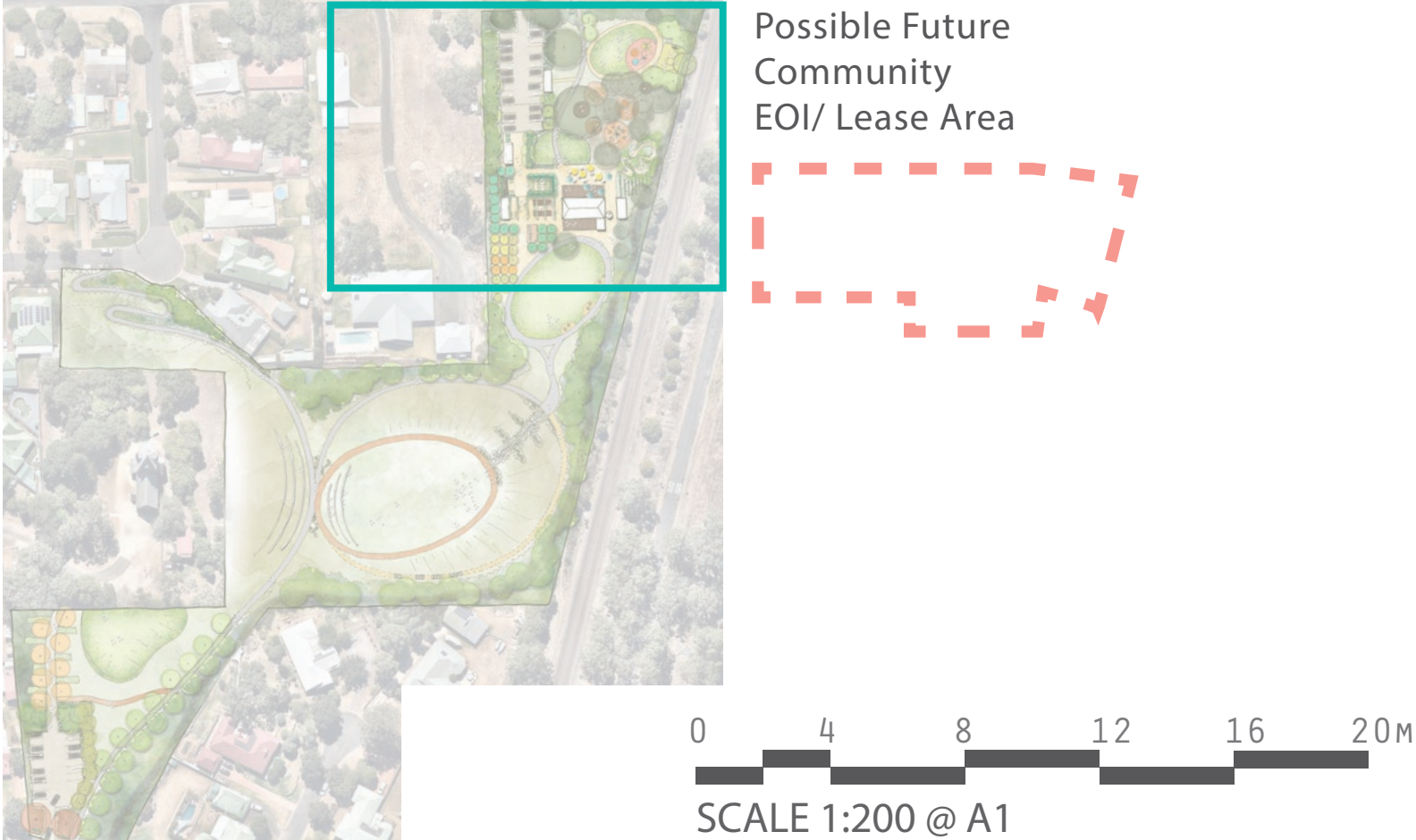
CONCEPT LANDSCAPE DETAIL PLAN



LEGEND

- 01// Vehicular entry to carpark
- 02// Pedestrian entry to site
- 03// Existing trees to be retained
- 04// Proposed trees
- 05// Entry Signage
- 06// Open lawn area with children's play options
- 07// Nature play areas underneath established existing trees
- 08// Informal gravel path through bush tucker/indigenous planting area
- 09// Nursery area
- 10// Maintenance/ tools shed
- 11// Tank to catch rainwater
- 12// Vegetated swale to direct water through site.
- 13// Stabilised granite area for table and chairs and umbrellas as outdoor cafe/dining zone
- 14// Timber decks/verandah areas connected to existing school building
- 15// Structural arbor with vines to outdoor dining zone.
- 16// Long tables for outdoor dining/event purposes
- 17// Public toilet building
- 18// Outdoor kitchen area
- 19// Large community garden area showcasing fresh produce and enabling visitors to take part in harvesting or planting etc. Revitalisation and interpretation of existing market garden beds from existing historical site to be used/reinterpreted within this zone.
- 20// Olive hedges and pleached trees surrounding kitchen garden zone
- 21// Small nursery/potting shed
- 22// Existing shelter to be re-purposed
- 23// Multipurpose court
- 24// Orchard area
- 25// Outdoor BBQ area
- 26// Looping path around 'Picnic Green'
- 27// Timber deck underneath existing trees
- 28// Tree planting to provide shade to carpark
- 29// Outdoor Table tennis
- 30// Carpark lighting - with base GPO's for events
- 31// Old school building
- 32// Site for temporary farm/petting zoo. Temporary fences as required.
- 33// Possible water bubbler locations
- 34// Basic vehicle gate to close off southern end of carpark during certain time periods
- 35// Accessible path route through site

KEYPLAN

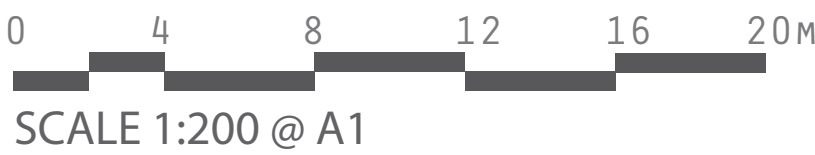


CONCEPT LANDSCAPE DETAIL PLAN



LEGEND

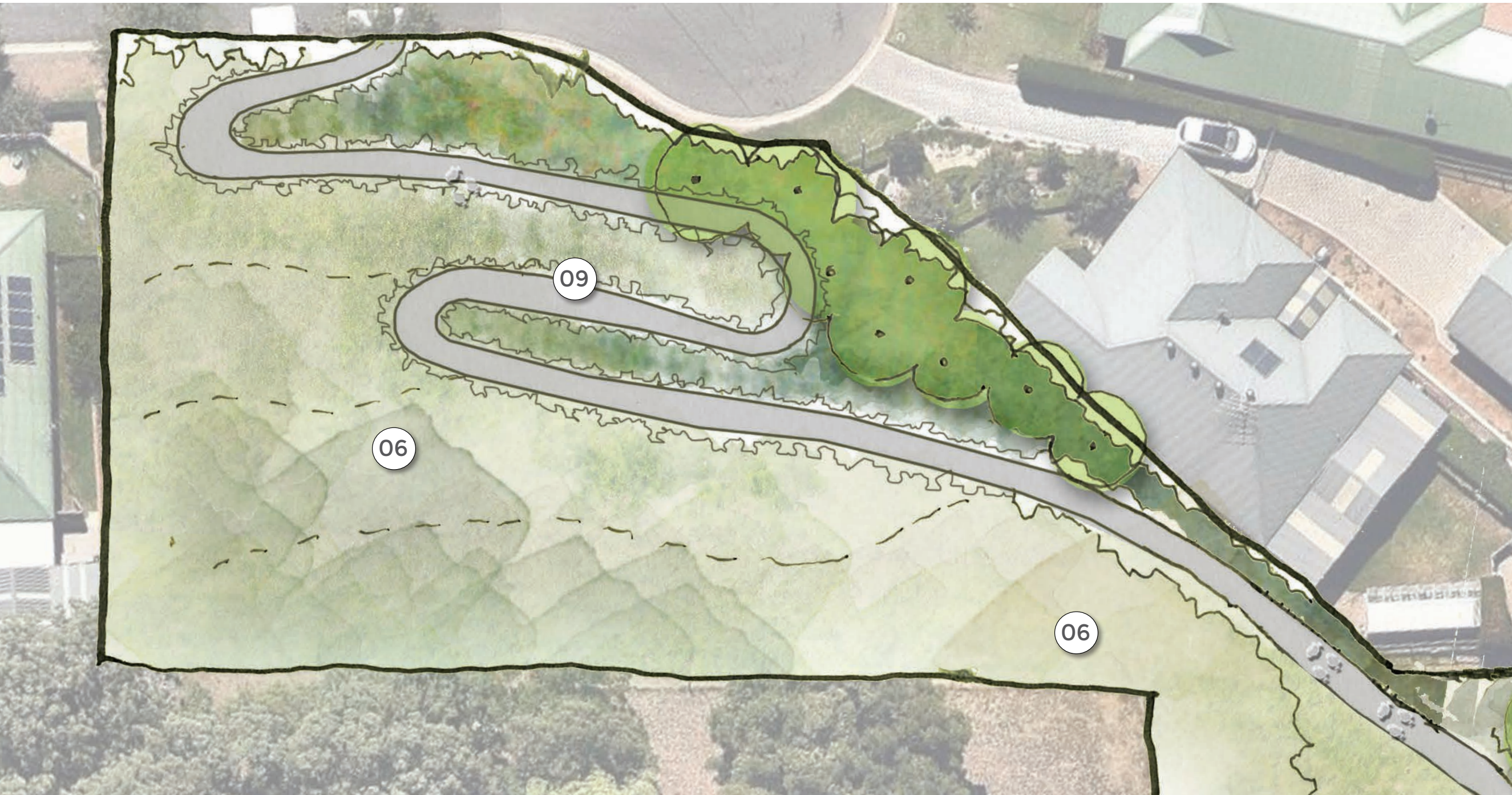
- 01// Cumberland Plain buffer planting
- 02// Informal rock steps
- 03// Informal gravel walking track
- 04// Cumberland Plain Native Meadow/dog off leash area
- 05// Grass amphitheatre steps with 3 phase power incorporated into face of steps
- 06// Junction of looping paths at higher level
- 07// Picnic green
- 08// Looping path around 'Picnic Green'
- 09// Vegetated swale
- 10// Accessible path route through site
- 11// Compacted granolithic pathway around meadow
- 12// Exercise stations



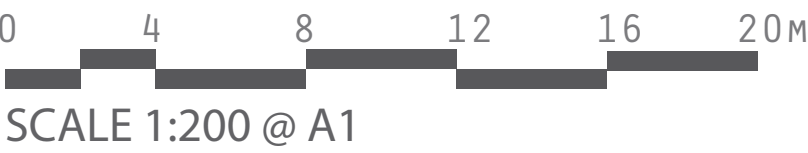
KEYPLAN



CONCEPT LANDSCAPE DETAIL PLAN



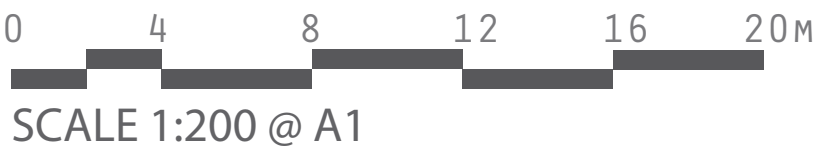
NOTE: Pathway subject to future detailed design and heritage compliance



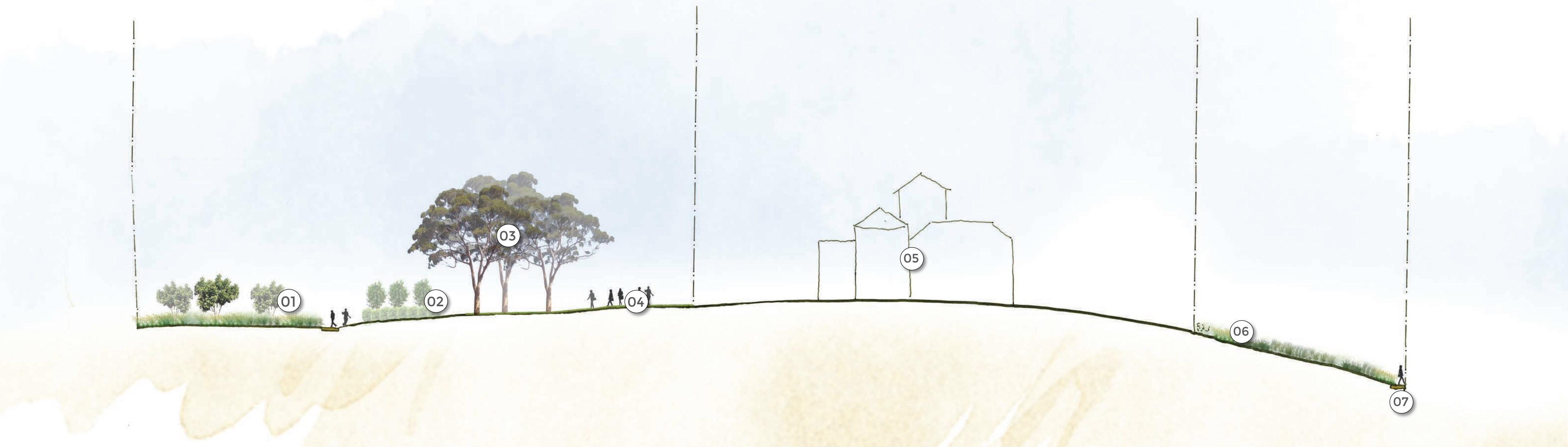
LEGEND

- 01// Formal tree planting to church carpark area
- 02// Small carpark to help service large crowds to church events
- 03// Predominantly pedestrian pathways, wide enough for vehicle access to get to amphitheatre area to set up for events
- 04// Church lawn with views to south east
- 05// Post lighting to carparks with base GPO's for events
- 06// Ecological endangered planting areas
- 07// Vegetated swale
- 08// Entry signage
- 09// Accessible path leading from Site down to Riversford Close
- 10// Increased vegetation to northern side of carpark in order to help screen views down into carpark from Church grounds
- 11// Pedestrian access only

KEYPLAN



CONCEPT LANDSCAPE SECTIONS

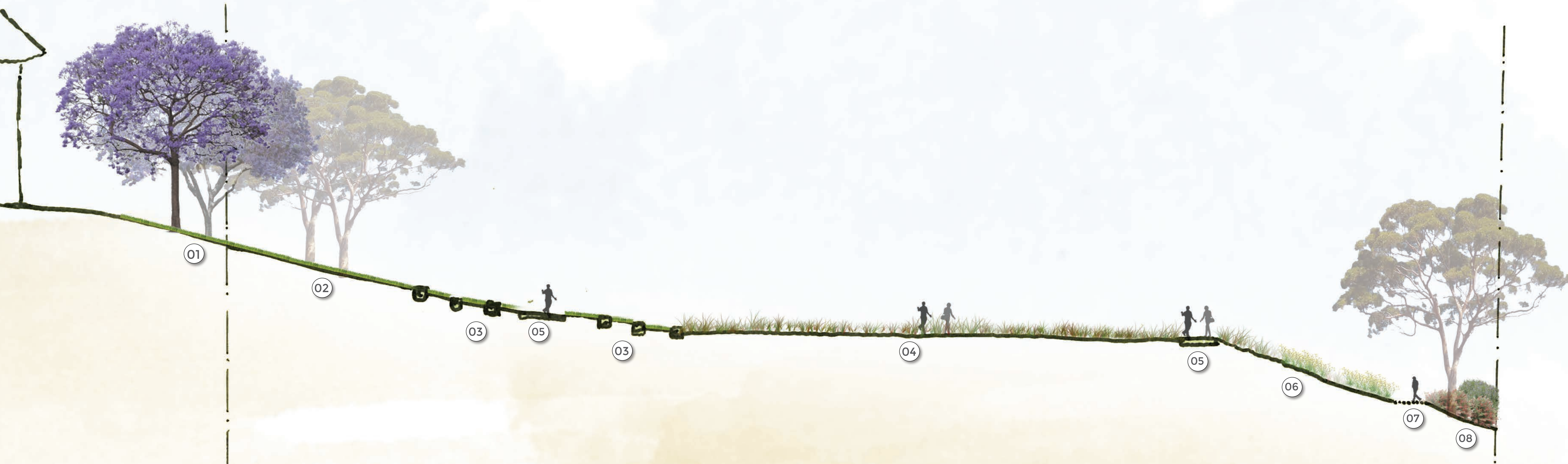


LEGEND

- 01// Formal tree planting to carpark entry
- 02// Carpark planting and trees to shade carpark
- 03// Large endemic tree plantings
- 04// Church lawn. Enhances use of church block and provides a seamless connection between the School Site and Church block
- 05// St James Anglican Church
- 06// Ecological/Endangered planting areas
- 07// Low planting to enable views from church block down across site
- 07// Path enables access back down to existing street level

0 10 20 30 40 50m
SCALE 1:500 @ A1

SECTION A - A



LEGEND

- 01// Existing tree planting on church site
- 02// Sloped embankment - slashed grass or low ground cover planting
- 03// Turf amphitheatre with natural sandstone steps
- 04// Cumberland Plain Native Meadow/off leash dog park area
- 05// Upper looping path
- 06// Planted embankment
- 07// Informal granite bush track loop around lower level of meadow
- 08// Cumberland Plain native screen buffer planting

0 5 10 15 20 25m
SCALE 1:250 @ A1

SECTION B - B



CONCEPT MATERIAL PALETTE

INSPIRATION



AGRICULTURAL HISTORY



HAWKESBURY SANDSTONE



RURAL RUSTIC ELEMENTS



ST JAMES CHURCH



OLD MENANGLE SCHOOL

NATURAL MATERIALS



SANDSTONE



DECOMPOSED GRANITE



TIMBER



BRICKS



METAL



TIMBER PERGOLA



TIMBER FURNITURE



SIGNAGE



STEEL EDGE



SANDSTONE



CONCEPT PLANTING PALETTE - NATIVE & ENDANGERED SPECIES

TREES



EUCALYPTUS MOLUCCANNA



EUCALYPTUS CREBRA



EUCALYPTUS TERICORNIS



ACACIA IMPLEXA



MELALEUCA DECORA



CORYMBIA MACULATA



SANTALUM ACUMINATUM



ALECTRYON SUBCINEREUS

SHRUBS & ACCENTS



DILLWYNIA SIEBERI



ACACIA ELATA



BANKSIA SERRATA



ACACIA PARRAMATTENSIS



GREVILLEA SERICEA



ALPINIA CAERULEA 'ATHERTON'

GRASSES & RUSHES



THEMEDA TRIANDRA



DIANELLA LONGIFOLIA

GROUNDCOVERS & CLIMBER



HARDENBERGIA VIOLACEA



CAROBROTUS VIRESCENS



VIOLA HEDERACEA

HERBS



APIUM PROSTATUM

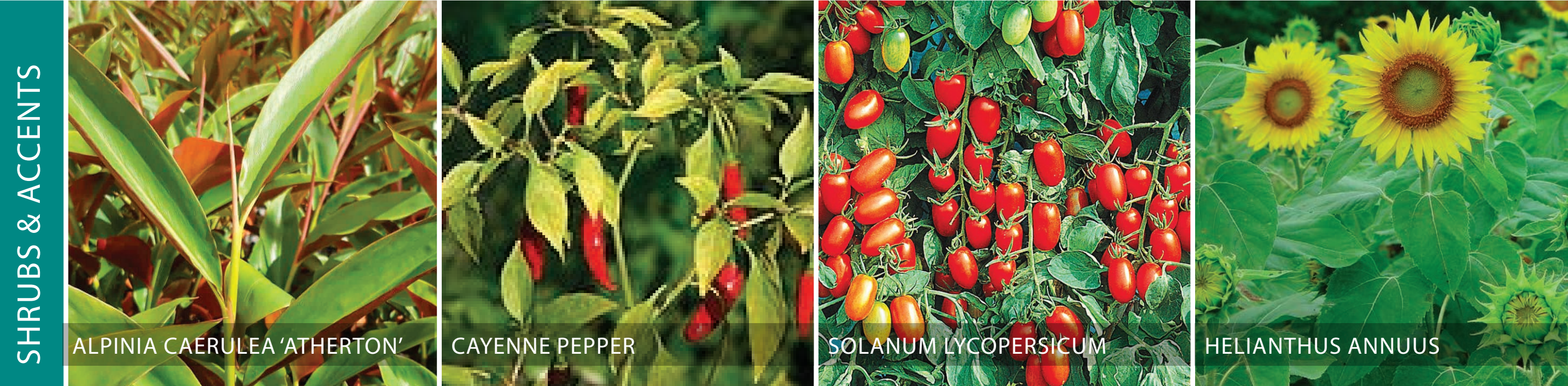


TETRAGONIA TETRAGONIOIDES



PROSTANTHERA MINTY

CONCEPT PLANTING PALETTE - KITCHEN & COMMUNITY GARDEN



CONCEPT PLANTING PALETTE - BUSH TUCKER EDUCATIONAL AREA

TREES



MACADAMIA TETRAPHYLLA



CITRUS AUSTRALASICA



DAVIDSONIA JERSEYANA



PODOCARPUS ELATUS



MELALEUCA DECORA



SANTALUM SPICATUM

SHRUBS & ACCENTS



ALPINIA CAERULEA 'ATHERTON'



BANKSIA SERRATA



GREVILLEA SERICEA



MELASTOMA AFFINE

GROUNDCOVERS & CLIMBERS



HARDENBERGIA VIOLACEA



CARPOBROTUS VIRESCENS



VIOLA HEDERACEA

HERBS



APIUM PROSTRATUM



TETRAGONIA TETRAGONIOIDES



MENTHA AUSTRALIS

EDIBLE PLANT TAXONOMY

- Leaves
- Flowers
- Fruits/ Berries
- Seeds/ Nuts
- Nectar
- Roots/ Rhizome