

APPENDIX 1

ABBOTSFORD

GEOTECHNICAL ASSESSMENT – PICTORIAL

A number of geotechnical features relevant to the development of Lot are illustrated in the following pictorial. Position of views taken is indicated on Figure 1 below.

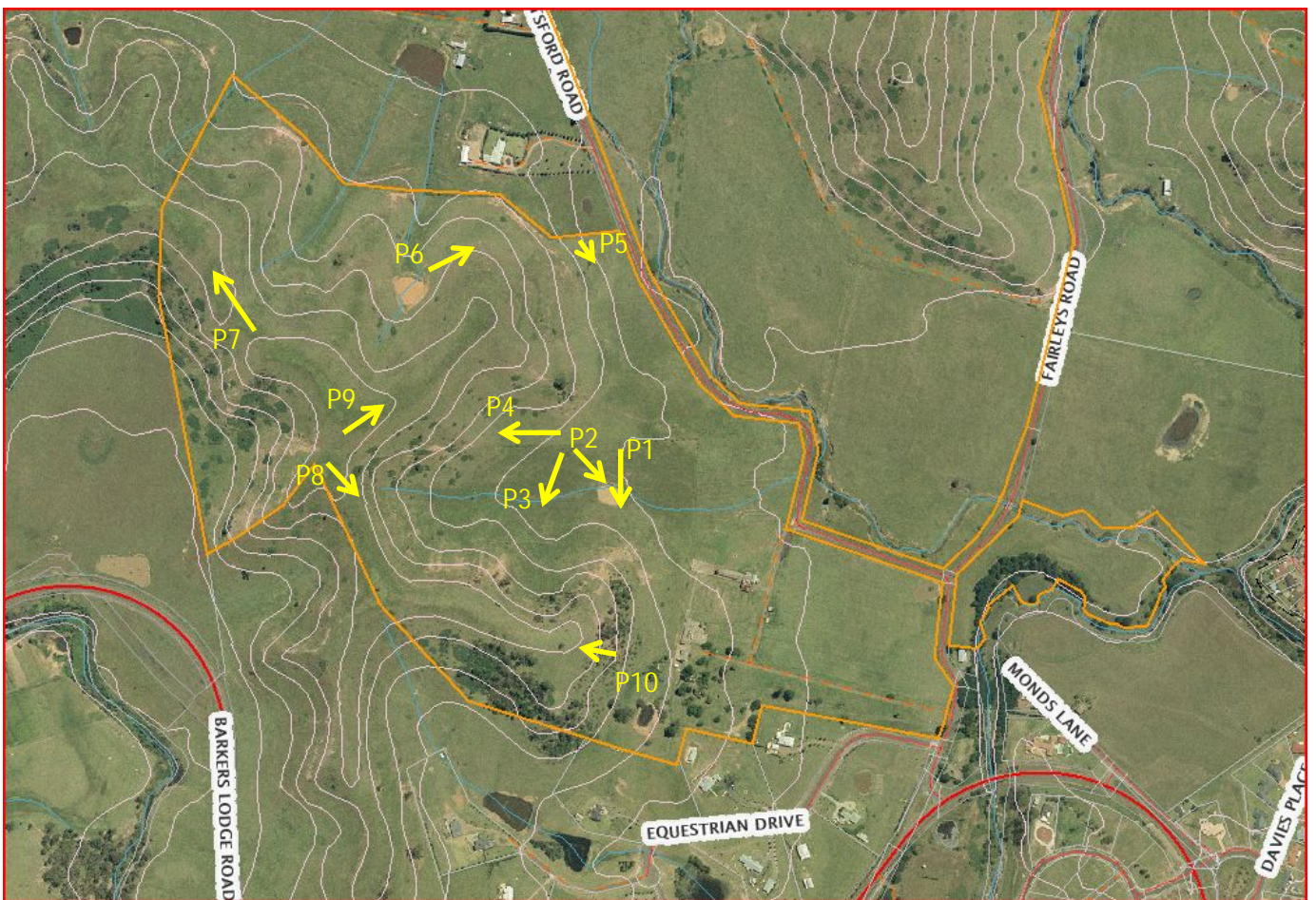


Figure 1: Locations and view directions for Plates 1 to 10.



Plate 1: Looking south-easterly at Abbotsford Dairy. Valley floor around dam is suitable for development.



Plate 2: Looking southerly at valley floor and steep (>20%) side slopes. Approximate position of building line indicated.



Plate 3: Close up of steep side slopes with typical high levels of erosion and slumping. Slope above line is $>20\%$ and falls within VH Risk of Instability Zone. No development should be allowed on these slopes.



Plate 4: Looking westerly. Fence line is close to building line, with slopes on Left Hand Side being $<20\%$.



Plate 5: Looking south-easterly towards Picton, showing significant slumping in foreground – probably exacerbated by high moisture levels.



Plate 6: Looking north-easterly at suitable building site – cross fall is approximately 10%.



Plate 7: Looking westerly along ridge top. Ridge tops are suitable for access roads, but often too narrow to support building development.



Plate 8: Looking south-easterly towards Picton along ridge top.



Plate 9: Looking north-easterly along ridge line (see dashed line). Potential for development site is good.



Plate 10: Looking westerly along ridge line. This area has potential for development.