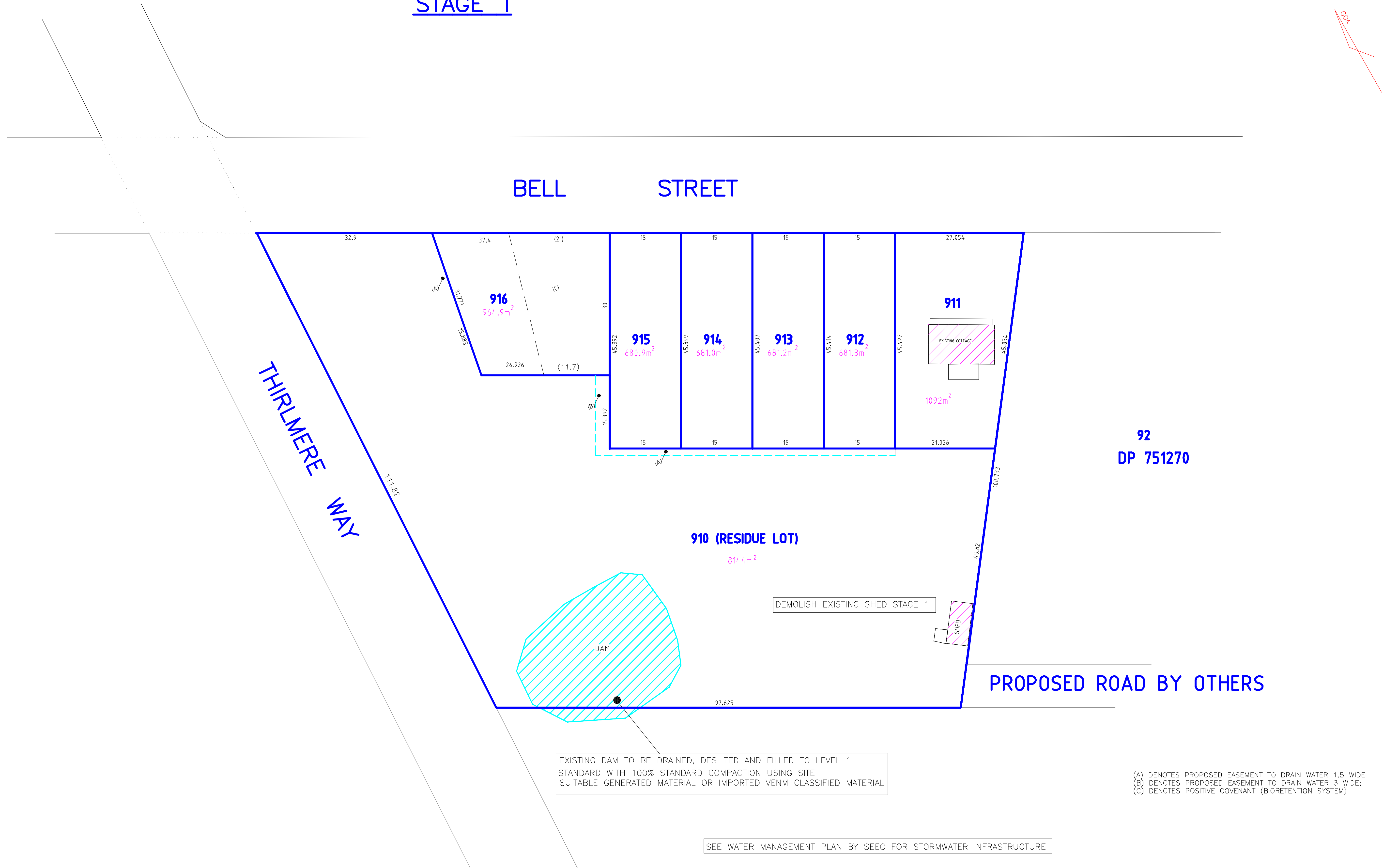


STAGE 1



NOTES
ALL DIMENSIONS ARE APPROXIMATE AND SUBJECT TO FINAL SURVEY

(A) DENOTES PROPOSED EASEMENT TO DRAIN WATER 1.5 WIDE
(B) DENOTES PROPOSED EASEMENT TO DRAIN WATER 3 WIDE;
(C) DENOTES POSITIVE COVENANT (BIORETENTION SYSTEM)

EXISTING DAM TO BE DRAINED, DESILTED AND FILLED TO LEVEL 1
STANDARD WITH 100% STANDARD COMPACTION USING SITE
SUITABLE GENERATED MATERIAL OR IMPORTED VENM CLASSIFIED MATERIAL

SEE WATER MANAGEMENT PLAN BY SEEC FOR STORMWATER INFRASTRUCTURE

SCHEDULE OF AMENDMENTS

AMEND N°	AMENDMENT DETAIL	EDITION	DATE ISSUED
1	PORTION 91	POR91	25-1-2018

REIN WARRY AND CO.

CONSULTING
SURVEYORS

3/67 MENANGLE ST
PICTON NSW 2571
PH: (02) 46773144
reinwarry@bigpond.com

PLAN FOR THE APPROVAL TO THE
SUBDIVISION AND DEVELOPMENT OF
LOT 91 DP 751270 -No.45 BELL ST

DESIGN:DRW
DRAWN: DRW
SHEET 3 OF 6

FILE N°
7342
POR91