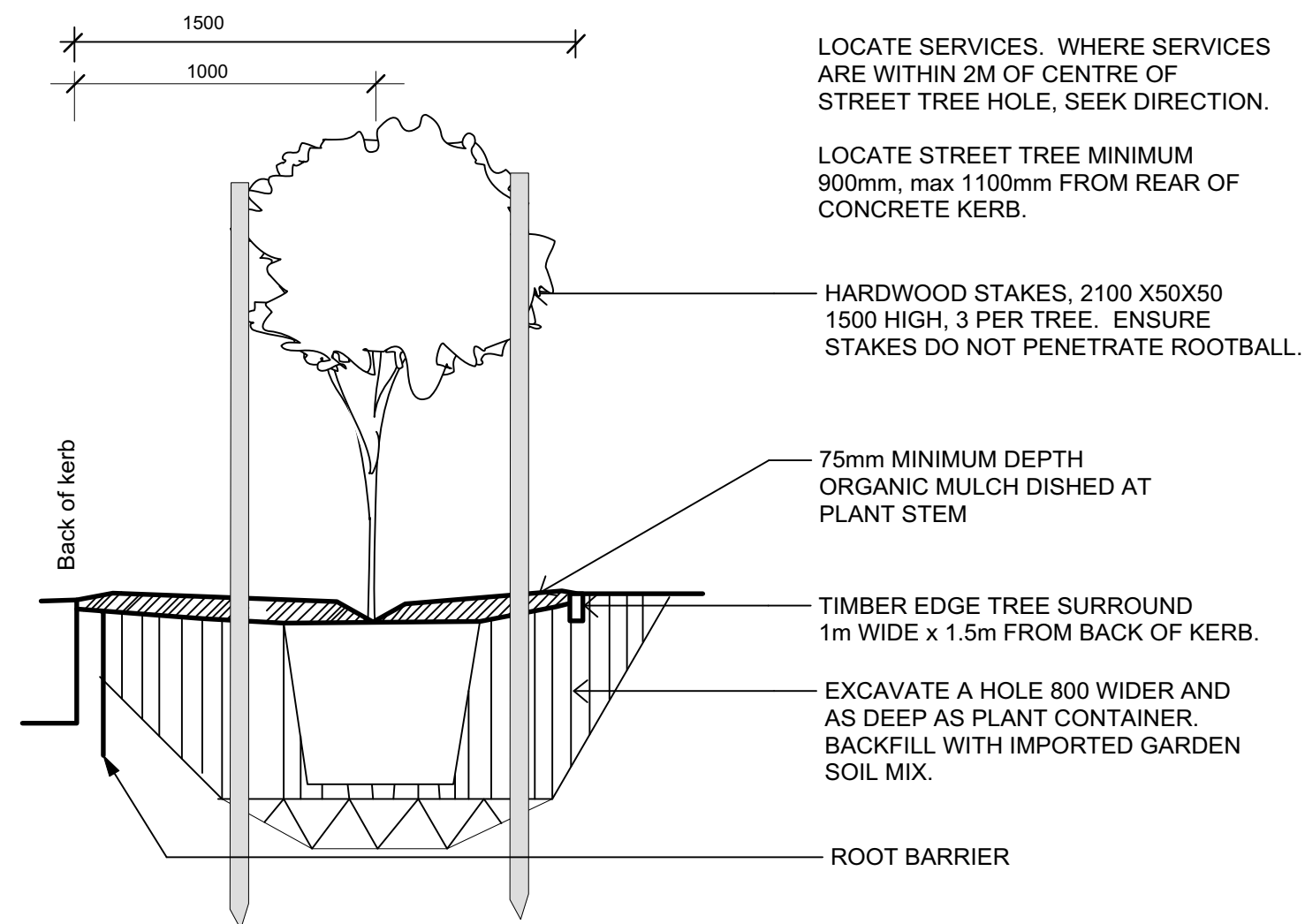


1 TIMBER EDGE SECTION SCALE 1:10



2 STREET TREE PLANTING - 100 litre SECTION SCALE 1:20

MAINTENANCE SCHEDULE - STREET TREES

Street trees shall be maintained for 36 months following installation to the following minimum standard:

WATER

Water plants deeply - as a guideline: (25 litres of water per m2/week) three times a week for 2 weeks, then twice a week for 2 months, then 1-2 times per week for remainder of year. Monitor soil conditions to ensure root ball is kept moderately moist and adjust water quantity and frequency dependant on rainfall and season.

MULCH

Top up mulch to 100mm depth, in a minimum 600mm diameter around tree. Do not place mulch in direct contact with plant stem. Every 4 months.

WEEDS

Remove weeds from mulch area (by pulling out at roots). Do not spray herbicide within mulch zone. Fortnightly.

HEALTH

Inspect foliage and branches for disease or pest infestations. Fortnightly. Control where necessary.

STAKES

Check stakes/ guards and replace/repair as necessary. Adjust as required to ensure no damage to stem or branches. Ensure free movement of plant. Weekly.

FORMATIVE PRUNING.

Check for defects in tree structure and prune where necessary in accordance with Natural Target Pruning Techniques. Undertake pruning in accordance with AS4373:2007 'Pruning of Amenity Trees'. Any puning to be undertaken by qualified arborist or horticulturalist.

CROWN LIFTING.

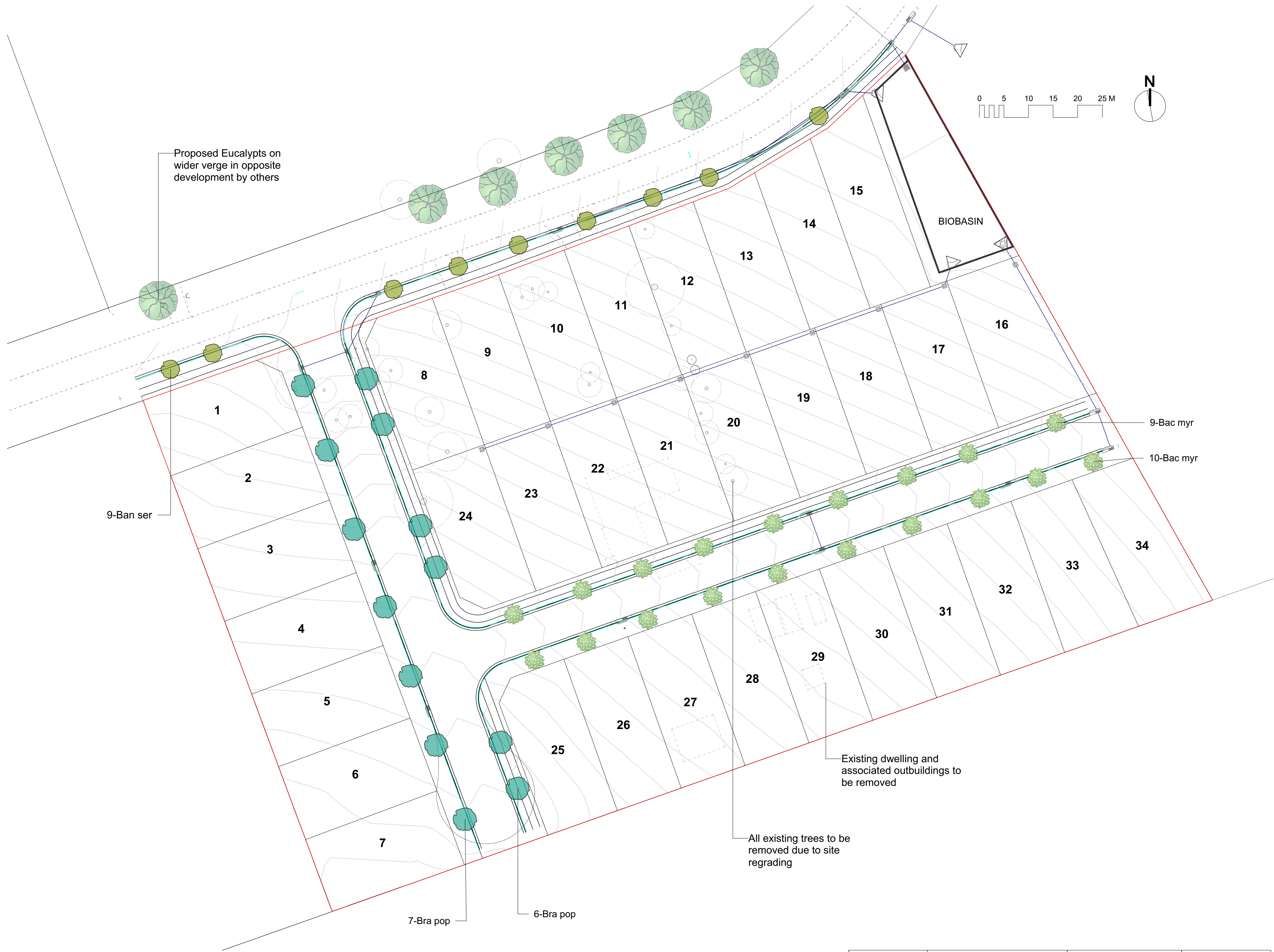
At 6 monthly intervals, check that tree remains clear of pedestrian paths and vehicles. Remove lower branches as necessary to lift crown. Do not remove more than one third of total tree height. Prune as per "Formative Pruning".

FERTILISE

Apply an appropriate balanced N:P:K slow release fertiliser - every 4-6 months depending on season.

REPLACEMENTS

Replace all plants that are missing, unhealthy or dead with plants of the same size, quality and species. Replace on a continuing basis not exceeding 2 weeks. Fortnightly.



NOTE:

Street trees to be installed as per Wollondilly Council "Street Tree Vegetation Risk and Management Procedure". Street tree locations to be adjusted during final design. Street trees to be located minimum 2.5m from street lighting, power poles, driveways or telephone pillars, and no closer than 12m from apex of street corner.

Footpaths shown indicatively, subject to detailed design.

Plant List				
ID	Qty	Common Name	Botanical Name	Scheduled Size
Trees				
Acm Min	21	Lillypilly	Acmena smithii 'Minor'	5 litre
Bac myr	19	Grey Myrtle, Lancewood	Backhousia myrtifolia	75 litre
Ban ser	9	Old Man Banksia	Banksia serrata	75 litre
Bra pop	13	Kurrajong	Brachychiton populneus	75 litre
Mel lin	6	Snow-in-summer Paperbark	Melaleuca linearifolia	45 litre

PRELIMINARY

ISSUE

--

Residential Subdivision - East Tahmoor Precinct

30 Greenacre Drive Tahmoor (Lot 7 DP 263172)
CLIENT: X-TRAVIGANT C/- PRECISE PLANNING

LANDSCAPE ARCHITECT
HLS Pty Limited
Lindy Lean - Landscape Architect
Registered landscape Architect #00423 AAILA
PO Box 313 Ashfield NSW 1800 ph 02 9797 9366

Street Tree Plan

1:500 @A1 6 June 2018 status: ISSUE: P1

L 01