

1st FLOOR, 38 WILLOUGHBY ROAD
CROWS NEST NSW 2065
PH: (02) 9490 9600 FAX: (02) 9438 1224
EMAIL richross@richmondross.com.au

STORMWATER MANAGEMENT PLAN FOR PROPOSED McDONALD'S OPERATION REMEMBRANCE DRIVEWAY, TAHMOOR NSW 2573

Job Ref: 18/0069

Date: February 2019

Revision: A

Prepared By:



S. Darby BE(Hons) MIEAust CPEng

CONTENTS

1.0 INTRODUCTION	3
2.0 STORMWATER CONCEPT	4
3.0 STORMWATER QUANTITY AND QUALITY MANAGEMENT	5
4.0 CONCLUSION	5

1.0 INTRODUCTION

Richmond and Ross Pty Ltd, Consulting Engineers, were engaged to carry out a Stormwater Management Plan for the proposed McDonalds at Remembrance Driveway, Tahmoor. This report addresses the management of stormwater, within the proposed McDonald's site.

The site is within Wollondilly Shire Council and forms part of a larger development. Civil works for the overall development are being undertaken by Martens and Associates Pty Ltd.

1.1 SITE DETAILS

The area being developed for the McDonalds has a total area of approximately 3,200m² and was a grassed field prior to the current development. Initial earthworks have commenced for the overall development.

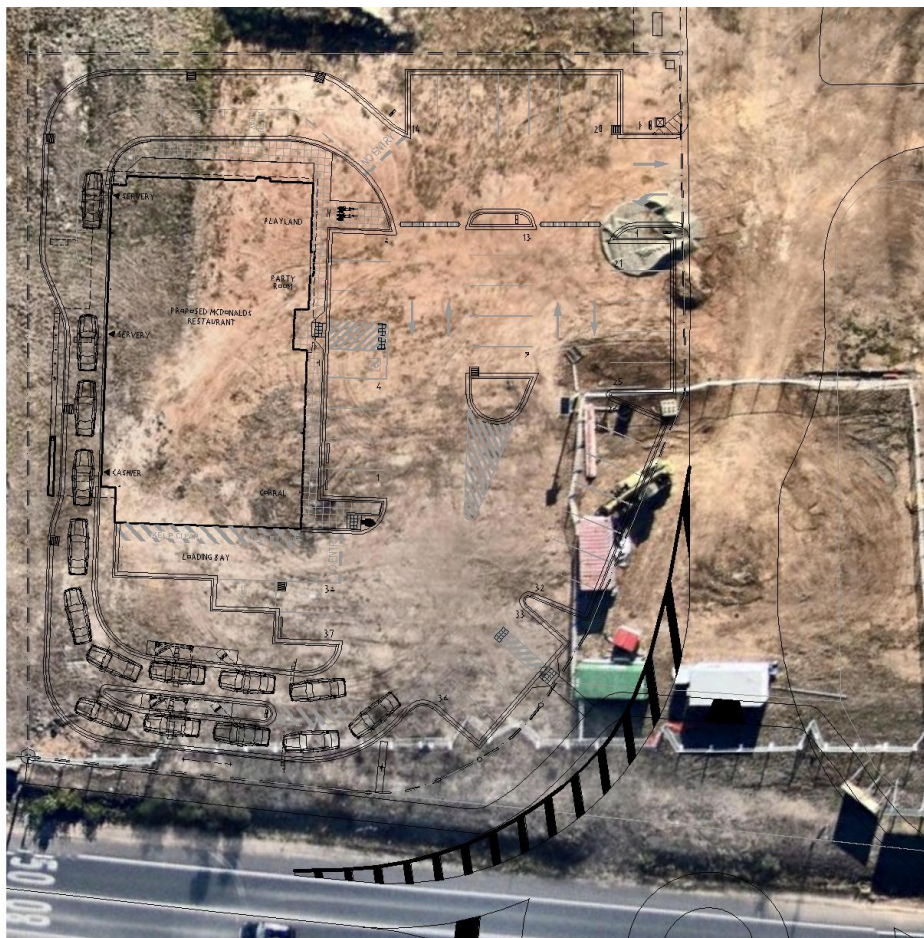


Figure 1 - Proposed Development Overlaid on Aerial Photograph

1.2. OVERALL SITE DEVELOPMENT

We have been advised that the developer for the overall site is providing services to the site and, in particular, is providing a stormwater connection, water quality treatment and stormwater detention to satisfy council's requirements.

In particular we have been advised that requirements for stormwater detention and water quality are being addressed as part of the overall development and no consideration has been given to these requirements in preparation of this report.

We are in receipt of plans for Stage 2 of the community subdivision prepared by Martens and Associates which show the provision of temporary bioremediation basins to treat stormwater during construction and have been advised that the ultimate layout will provide a treatment train that includes proprietary "Jellyfish" filters, however we do not have specific details of these systems.

Advice received is that council has been in discussions with the engineers and is aware of the approaches being taken with this project.

2.0 STORMWATER CONCEPT

A piped system is proposed to carry flows to the connection point being provided by the developer. This system has been sized to carry flows from the 20 year (5%AEP) storm and act as the minor system.

Levels have been set to provide an overland flow path to the crossover at the low point of the site. In the event that the system is blocked or over capacity, stormwater will pond to approximately 100mm deep at this location, before overflowing to the central road being provided through the development.

We have been advised that the central road through the development will be designed to carry the major design flows without adversely affecting downstream properties.

3.0 STORMWATER QUANTITY AND QUALITY MANAGEMENT

This report does not consider stormwater quantity or quality management except to note that we have been advised that connection to the developer's system will allow for satisfaction of the relevant requirements.

We have not been provided with information about the proposed systems and cannot otherwise comment.

4.0 CONCLUSION

A piped system is proposed to be provided in the McDonald's site and be connected into the developer's system.