

LEGEND SITE

PROPOSED BUILDING AS SHOWN

PROPOSED STRUCTURAL FLOOR SLAB LEVEL

EXISTING CONTOUR LINES BY SURVEYOR

EXISTING SPOT LEVELS BY SURVEYOR

APPROX. LOCATION OF BOARDS SEWER

EXISTING STREET KERB & GUTTER

EXISTING STREET STORMWATER PIT

PROPOSED LANDSCAPED AREA; REFER TO LANDSCAPE ARCHITECTS DOCUMENTATION

EXISTING TREE TO REMAIN

EXISTING TREE TO BE REMOVED

PROPOSED MASONRY RETAINING WALL CONSTRUCTION AS PER ENGINEERS DETAILS

150 HIGH R. CONCRETE KERB TO ENGINEERS DETAILS

BOL-1 1500 CONC. FILLED STEEL BOLLARDS 1200 HIGH TO DOORWAY; PAINT FINISH 'SAFETY YELLOW'

BOL-2 1500 CONC. FILLED STEEL BOLLARDS 1500 HIGH TO ROLLER SHUTTER; PAINT FINISH 'SAFETY YELLOW'

WS. SELECTED WHEEL STOPS TO A.S./N.Z.S. 2890.1 - 2004

FHR PROPOSED FIRE HOSE REEL LOCATIONS AS PER HYDRAULIC ENGINEERS DETAILS

HYD PROPOSED FIRE HYDRANT LOCATION AS PER HYDRAULIC ENGINEERS DETAILS

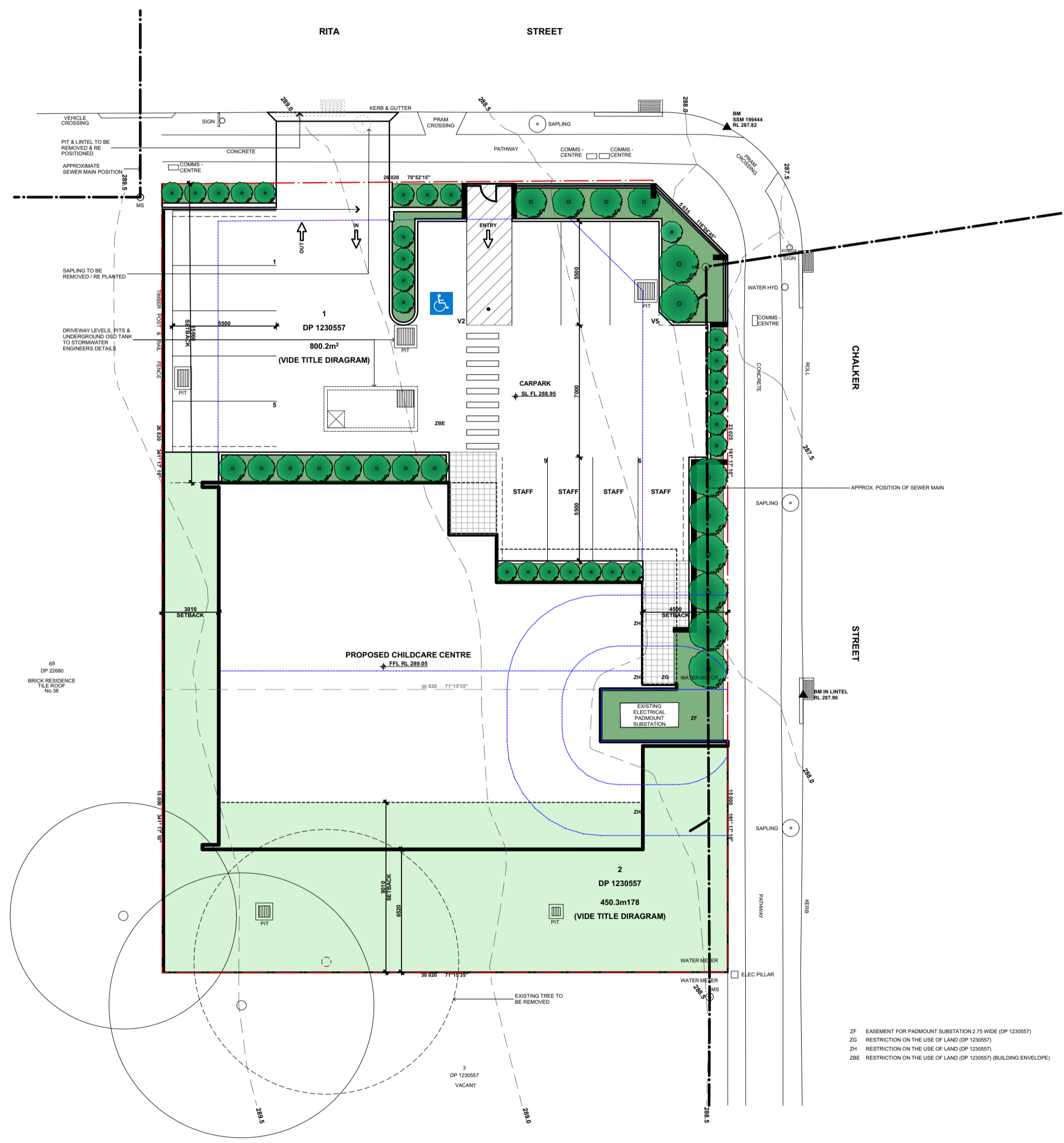
SMH SEWER MANHOLE LOCATION AS SHOWN

ODP SELECTED PVC STORMWATER DOWNPIPES; REFER TO DRAINAGE DOCUMENTATION FOR DETAILS

RWT 5,000L ABOVE/BELOW GROUND RAINWATER TANK WITH PUMPS FOR IRRIGATION & TOILET PURPOSES; CONNECT OVERFLOW PIPE TO STORMWATER PIPELINE TO DISCHARGE TO STREET TO COUNCIL REQUIREMENTS

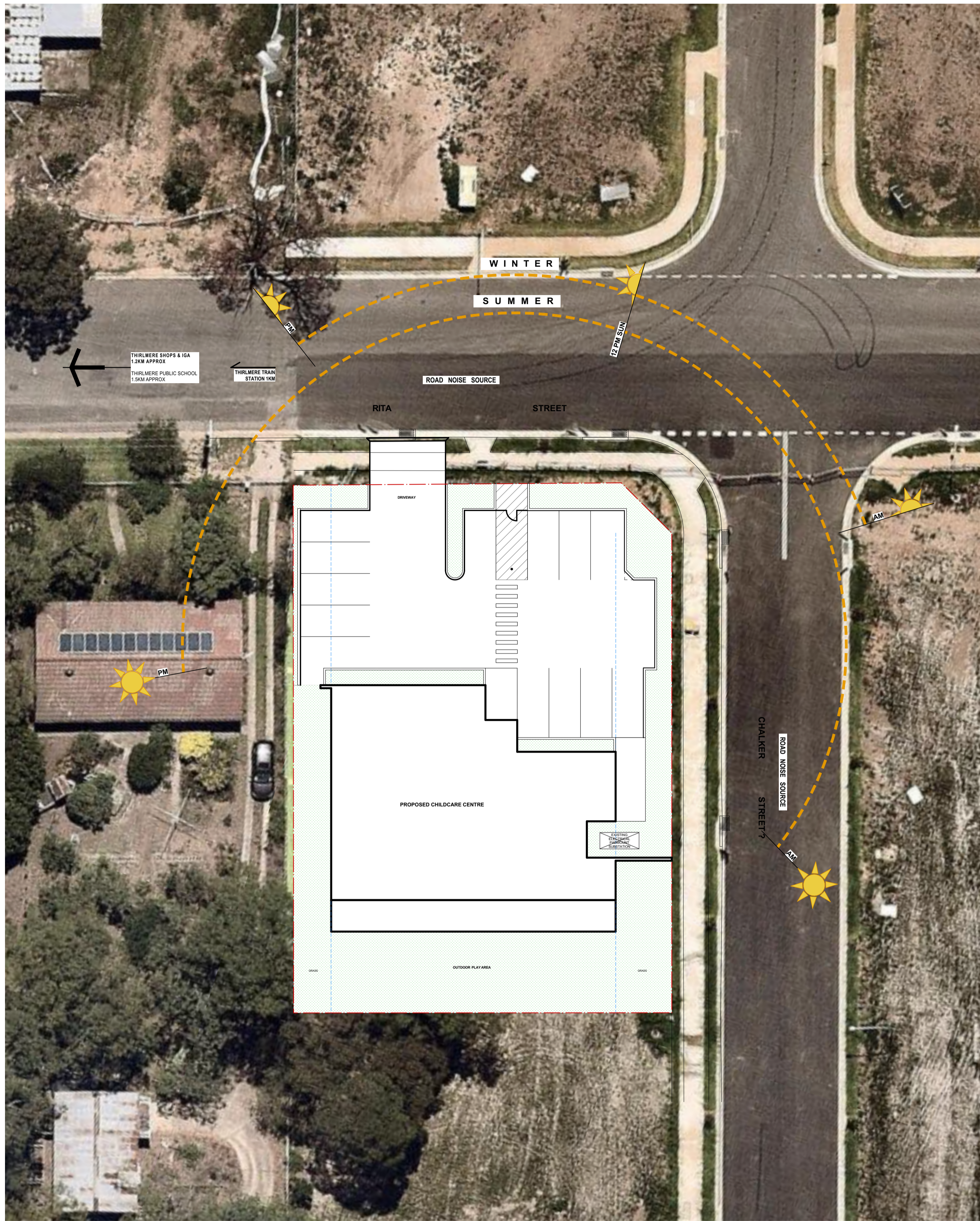
PIT STORMWATER PIT; REFER TO STORMWATER ENGINEERS DETAILS FOR FINISHED SURFACE LEVELS

GRATE STORMWATER GRATE; REFER TO STORMWATER ENGINEERS DETAILS FOR FINISHED SURFACE LEVELS



SITE PLAN

Scale 1:200



SITE ANALYSIS PLAN

Scale 1:200

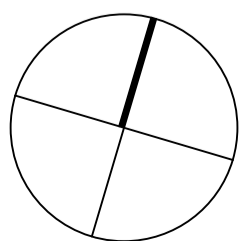
Issue	Description	Date	Drawn	Issued
A	ISSUED FOR DA	16.09.2019	VP	CZ
B	RE ISSUED FOR DA	29.07.2019	VP	CZ
C	RE ISSUED FOR DA	01.08.2019	VP	CZ

General Notes:

- All dimensions and floor areas are to be verified by the Builder prior to the commencement of any building work. Any discrepancies are to be brought to the attention of the designer.
- Levels shown are approximate unless accompanied by reduced levels.
- Figured dimensions must be taken in preference to scaling.
- All boundary clearances must be verified by the surveyor prior to commencement of any building work.
- Where engineering drawings are required such must take preference to this drawing.
- Stormwater to be discharged to Council's requirements and AS 3500.3-1990.
- All services to be located and verified by the Builder with relevant authorities before any building work commences.

COPYRIGHT:
This design and the associated documents is subject to copyright laws and may not be reproduced in any form without written consent from Algorry Zappia & Associates Pty Ltd.

North Point



Consultants

ALGORRY ZAPPIA & ASSOCIATES PTY. LTD.

Building Designers & Consulting Civil & Structural Engineers

a Suite 4, Level 1, 84 Bathurst Street, Liverpool, NSW 2170
P.O. Box 825, Liverpool Business Centre, NSW 1871
t 9602 3133 / 9602 0303 f 9601 6903

e admin@algorryzappia.com.au
w www.algorryzappia.com.au

ABN 43 064 952 692

Project

PROPOSED CHILDCARE CENTRE

LOT 1 & 2 IN DP 1230557 No.s 2 & 6 CHALKER STREET THIRLMERE

Client

TM & NH & BH VO

Title

SITE, ANALYSIS PLAN

Drawn

VP

Checked

CZ

Date

JULY 2019

Activity Type

DA

Job

1026-19

Scale @ A1

AS SHOWN

Project

P5399

Sheet

A03

Issue

C