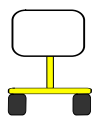




A TRAFFICABLE LANE SHALL BE MAINTAINED AT ALL TIMES TO SUPPORT BUS SERVICE, EMERGENCY SERVICES VEHICLES AND RETIREMENT VILLAGE ACCESS IF REMEMBRANCE DRIVEWAY ACCESS IS NOT VIABLE.

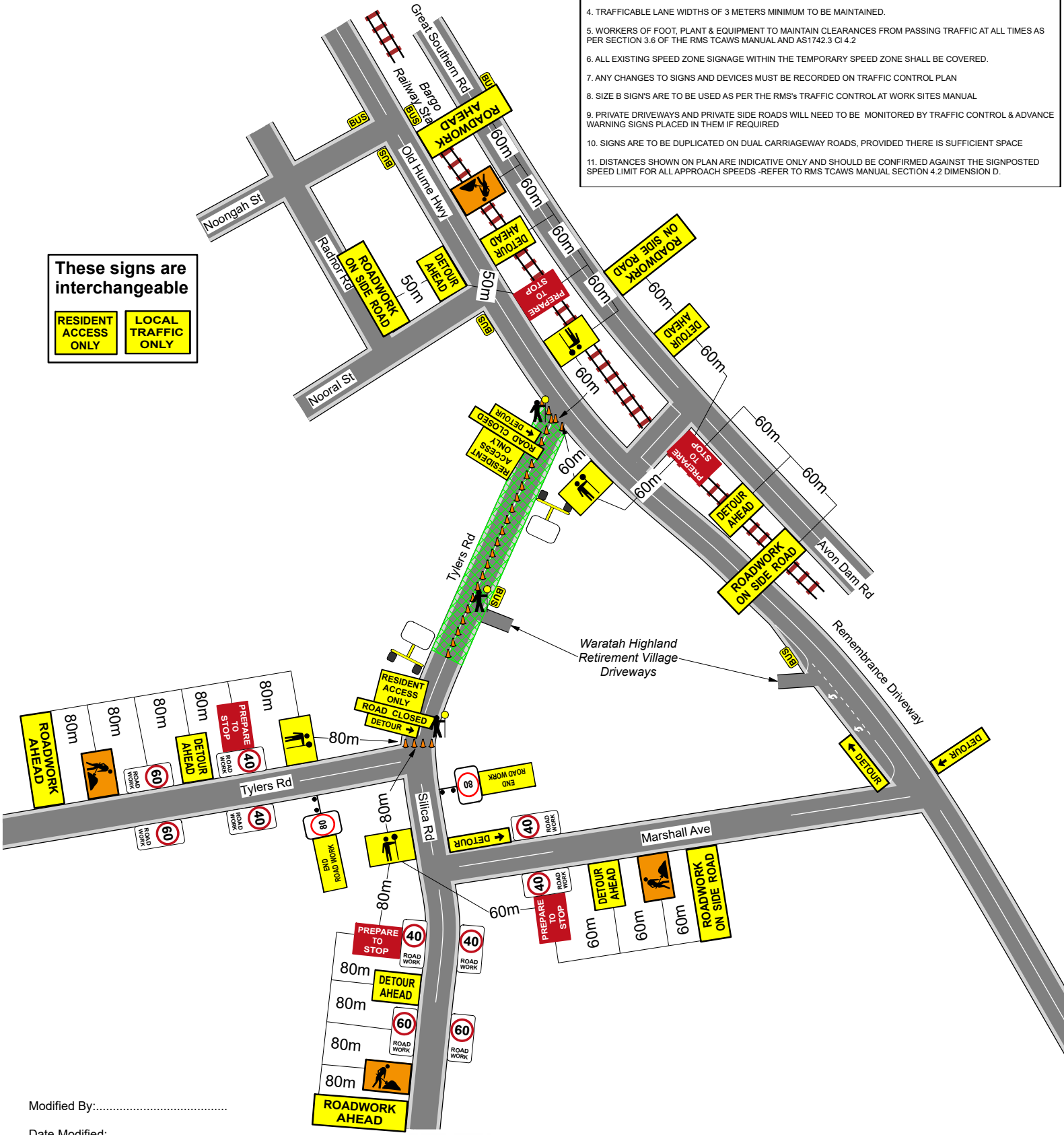


VMS Boards to be placed in Tylers Rd 5 working days prior to closure. Waratah Highland Retirement Village to be contacted with request for residents and visitors to use the access via Remembrance Driveway.

- NOTE:
1. TRAFFIC CONTROL SIGNS MUST BE PLACED IN ACCORDANCE WITH TRAFFIC CONTROL AT WORKSITES MANUAL
 2. TRAFFIC CONTROL CONES & BOLLARDS MUST BE PLACED UP TO A MAXIMUM SPACING OF
 - 10m IN AREAS WHERE APPROACH SPEEDS ARE ABOVE 50KM/H
 - 4m IN AREAS WHERE APPROACH SPEEDS ARE BELOW 50KM/H
 3. SPEED ZONES MAY VARY. ADJUST TAPER LENGTHS AND SIGNS DISTANCES TO SUIT SPEED ZONES AS PER TABLE 5.2 RECOMMENDED TAPER LENGTHS IN THE TRAFFIC CONTROL AT WORK SITES MANUAL
 4. TRAFFICABLE LANE WIDTHS OF 3 METERS MINIMUM TO BE MAINTAINED.
 5. WORKERS OF FOOT, PLANT & EQUIPMENT TO MAINTAIN CLEARANCES FROM PASSING TRAFFIC AT ALL TIMES AS PER SECTION 3.6 OF THE RMS TCAWS MANUAL AND AS1742.3 CI 4.2
 6. ALL EXISTING SPEED ZONE SIGNAGE WITHIN THE TEMPORARY SPEED ZONE SHALL BE COVERED.
 7. ANY CHANGES TO SIGNS AND DEVICES MUST BE RECORDED ON TRAFFIC CONTROL PLAN
 8. SIZE B SIGNS ARE TO BE USED AS PER THE RMS'S TRAFFIC CONTROL AT WORK SITES MANUAL
 9. PRIVATE DRIVEWAYS AND PRIVATE SIDE ROADS WILL NEED TO BE MONITORED BY TRAFFIC CONTROL & ADVANCE WARNING SIGNS PLACED IN THEM IF REQUIRED
 10. SIGNS ARE TO BE DUPLICATED ON DUAL CARRIAGEWAY ROADS, PROVIDED THERE IS SUFFICIENT SPACE
 11. DISTANCES SHOWN ON PLAN ARE INDICATIVE ONLY AND SHOULD BE CONFIRMED AGAINST THE SIGNPOSTED SPEED LIMIT FOR ALL APPROACH SPEEDS -REFER TO RMS TCAWS MANUAL SECTION 4.2 DIMENSION D.

These signs are interchangeable

RESIDENT ACCESS ONLY	LOCAL TRAFFIC ONLY
----------------------	--------------------



Modified By:.....
 Date Modified:.....
 Ticket Number:.....
 Expiry Date:.....
 Signature:.....

 PO BOX 682 CAMPBELLTOWN NSW 2560 ABN: 32 005232 039 TEL: (02) 9820 1911 FAX: (02) 9820 1793 EMAIL: john.whitehead@fultonhogan.com.au	DRAWN BY: JOHN WHITEHEAD CERT NO: 0051912629	LOCATION: Tylers Rd, Bargo MAP REF: 371 F10 DATE: 28/10/2019 CUSTOMER: Wollondilly Shire Council Printed Copies Are Uncontrolled	NOT TO SCALE TYPE OF PLAN: TCP PLAN NO: JW281019A-1
	This TCP has been generated to comply with AS:1742.3 2009 and the RMS TCWSM 27 July 2018 V.5 Technical Manual. All taper lengths, signage, delineation spacings are to be in accordance with current Australian Standards 1742.3-2009 Traffic Control for Works on Roads and the RMS Traffic Control for Worksites manual.		