

# PRICING & PAYMENT

The Bargo Waste Management Centre weighbridge is a NMI certified measuring device, verified under the National Measurement Act 1960.

All vehicles are now weighed in and out to determine the net weight of waste disposed.

Weight is rounded to the nearest 20kg and prices are based on waste type and source. Most waste is charged by weight however some items (tyres, mattresses, gas bottles) are charged by quantity. Load classification is determined by weighbridge staff. Proof of Wollondilly LGA residency is required to be shown on entry to the facility by all customers. Please refer to Terms and Conditions for more information.

All customers entering the Centre agree to the weights displayed on the weighbridge and to pay in full the total amount payable upon exit at the weighbridge payment window. Failure to stop and pay for disposal at exit will start debt recovery action and/or enforcement action and prevent re-entry to the site.



# CHARGES

**Please Note: \$50.00 minimum entry fee applicable for all weighed items.**

WEIGHED ITEMS - PER TONNE	PRICE (GST incl.)
General inert waste (inc. Soil (ENM))	\$405.00
Brick, pavers & concrete. Mixed or separated. No other material	\$150.00
Garden organics	\$180.00
Virgin Excavated Natural Material (VENM) - must be certified	Negotiable

COUNTED ITEMS - PER ITEM	PRICE (GST incl.)
Gas bottles	\$15.00
Mattresses (all sizes - per mattress or base)	\$40.00
Tyres - rims must be removed:	
• Motorcycle	\$5.50
• Passenger car	\$6.50
• Light truck & 4WD	\$12.50
• Truck	\$29.50
• Large plant up to 1 metre diameter	\$143.00
• Large plant > 1 metre diameter (advanced booking required)	Cost + 5%
Weighbridge (per docket)	\$105.00
Unacceptable waste re-load fee (refer to terms & conditions)	\$105.00



## BARGO WASTE MANAGEMENT CENTRE

The Centre is only available for use by Wollondilly Shire residents and businesses operating within the Wollondilly Shire. Proof of residency is required upon entry (eg. Drivers license, rates notice or utility bill).

### OPENING HOURS

Open 7 days\* 8:30am to 4:15pm  
\*Closed Christmas Day and Good Friday  
*The site may close at any time in the event of unsafe or dangerous weather conditions - Refer to Council's Website and Alerts page for the current status or call the site directly using the contact number below.*

### PAYMENT METHODS

EFTPOS only. 1% merchant fee applies.

### CONTACT

**P** 0419 490 599  
**W** [www.wollondilly.nsw.gov.au](http://www.wollondilly.nsw.gov.au)

**WARNING** - Hazards may exist on this operating landfill site. Persons enter site at own risk and agree to all terms and conditions. The terms and conditions can be viewed at [www.wollondilly.nsw.gov.au](http://www.wollondilly.nsw.gov.au) or at the Weighbridge Office.



# BARGO WASTE MANAGEMENT CENTRE

## FEES & CHARGES

Current from 1 July 2022



# WASTE ITEMS ACCEPTED AT THE CENTRE

Bargo Waste Management Centre accepts the following broken or unwanted items for a fee:

 Lounges & chairs

 Bricks, pavers & concrete

 Cabinets

 Gas bottles

 Drawers

 Soil

 Tables & desks

 Waste textiles

 Wood waste eg: pallets, particle board & MDF

 Garden equipment eg: pots & tools

 Plasterboard & construction waste

 Linoleum, carpet & rugs

 Garden organics

 Loose household items eg: toys, prams & crockery


 Mattresses


 Tyres


Please refer to the 'Free Recycling Drop Off' page for items that can be dropped off for free.


# ITEMS NOT ACCEPTED AT THE CENTRE

Staff will refuse entry of items or materials which the facility is not licensed to accept by the **NSW EPA** which include:

 Dead animals or animal waste


 Flares or ammunition

 Paints, solvents or thinners


 Hazardous or radioactive wastes


 Asbestos in any form


 Fuels

 Food waste

 Chemicals or pesticides

 Liquid wastes

 Sharps or medical waste

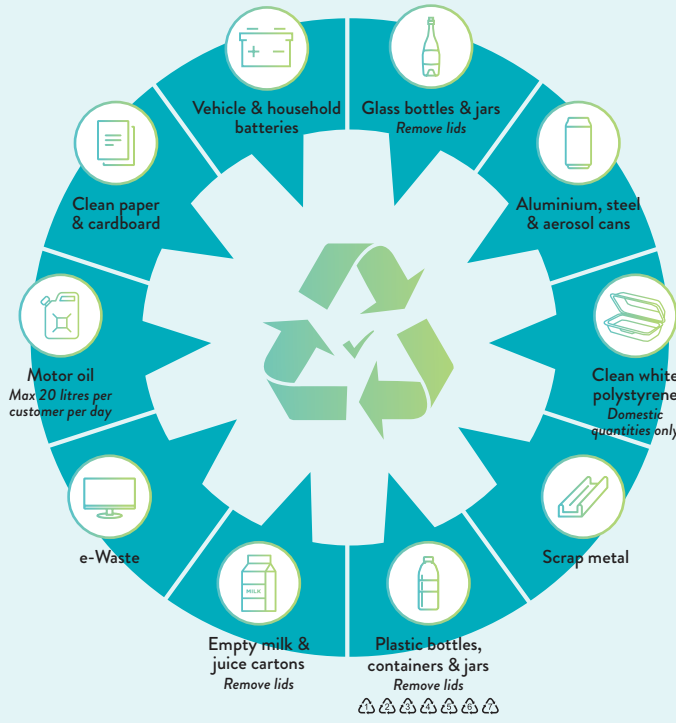
 Fluorescent tubes or globes

Many of the above items can be safely disposed of in Council's annual Chemical CleanOut.

Please visit [www.wollondilly.nsw.gov.au](http://www.wollondilly.nsw.gov.au) or call **4677 1100** for disposal options available for these materials at other locations.

# FREE RECYCLING DROP OFF

The following items are accepted for free in sorted loads:



- Recyclable items must be sorted in your load before arriving at Bargo Waste Management Centre and placed in the appropriate container or stockpile as directed.
- Normal waste disposal charges will apply for any unsorted items that are not placed in their designated area.
- Sorted recyclable and mixed waste loads will require multiple trips across the weighbridge to access reduced fees.

# CENTRE USE & SAFETY INFORMATION

 No smoking

 No cash EFTPOS only

 24/7 CCT in operation

 Adhere to speed limits

 Keep children and pets inside vehicle

 Enclosed footwear mandatory

 Stay in your vehicle while on weighbridge

 Proof of Wollondilly Shire residency required on entry